
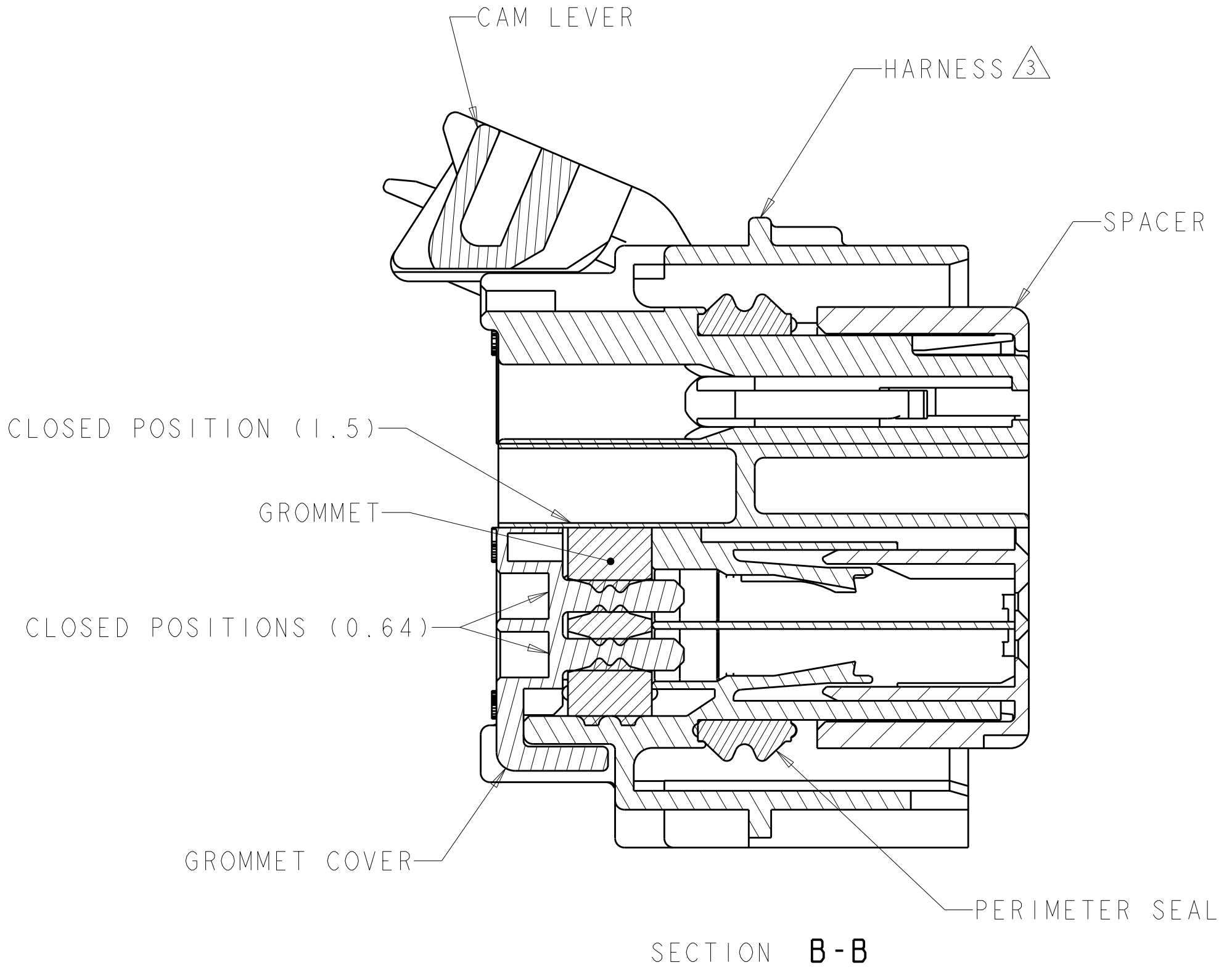
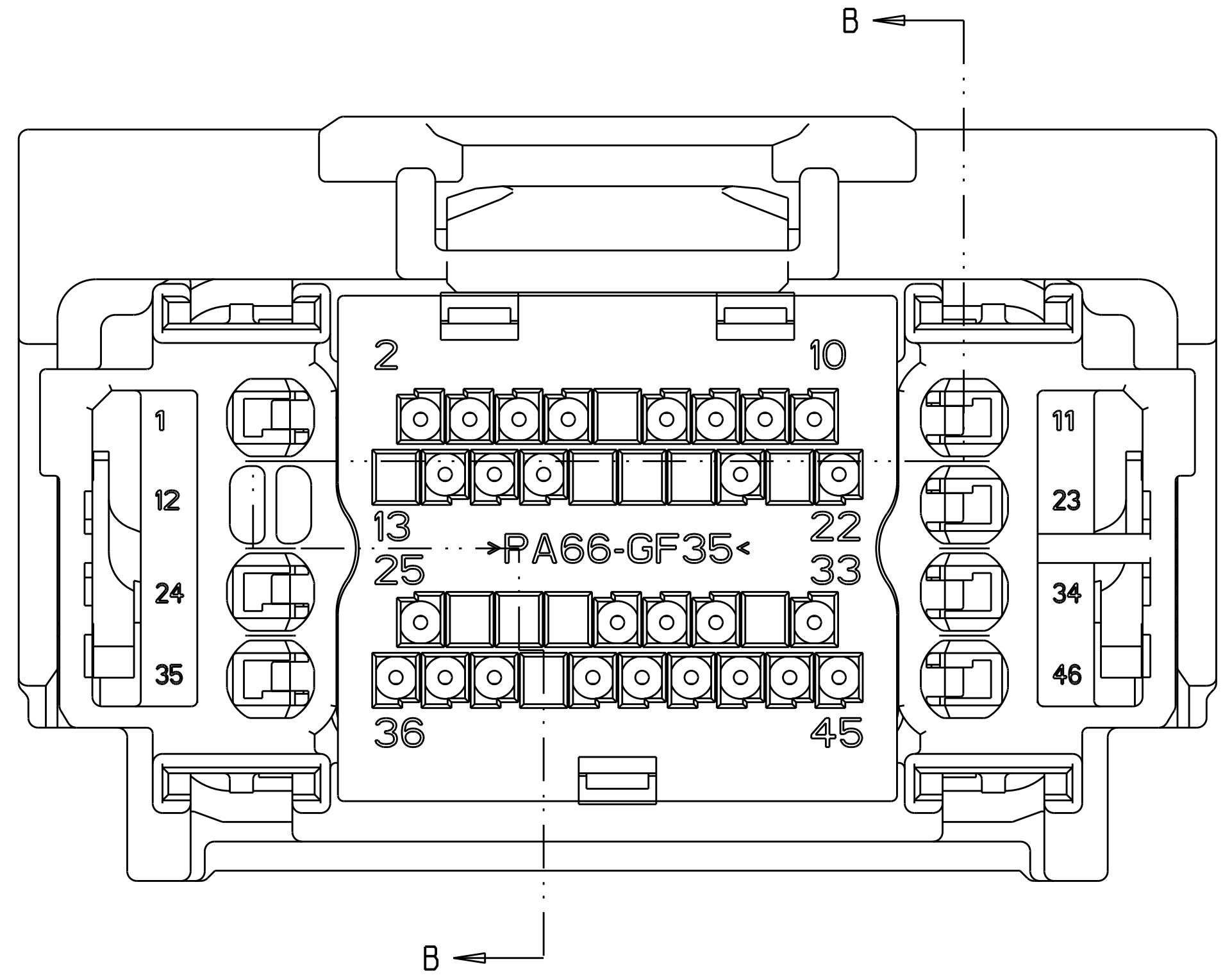
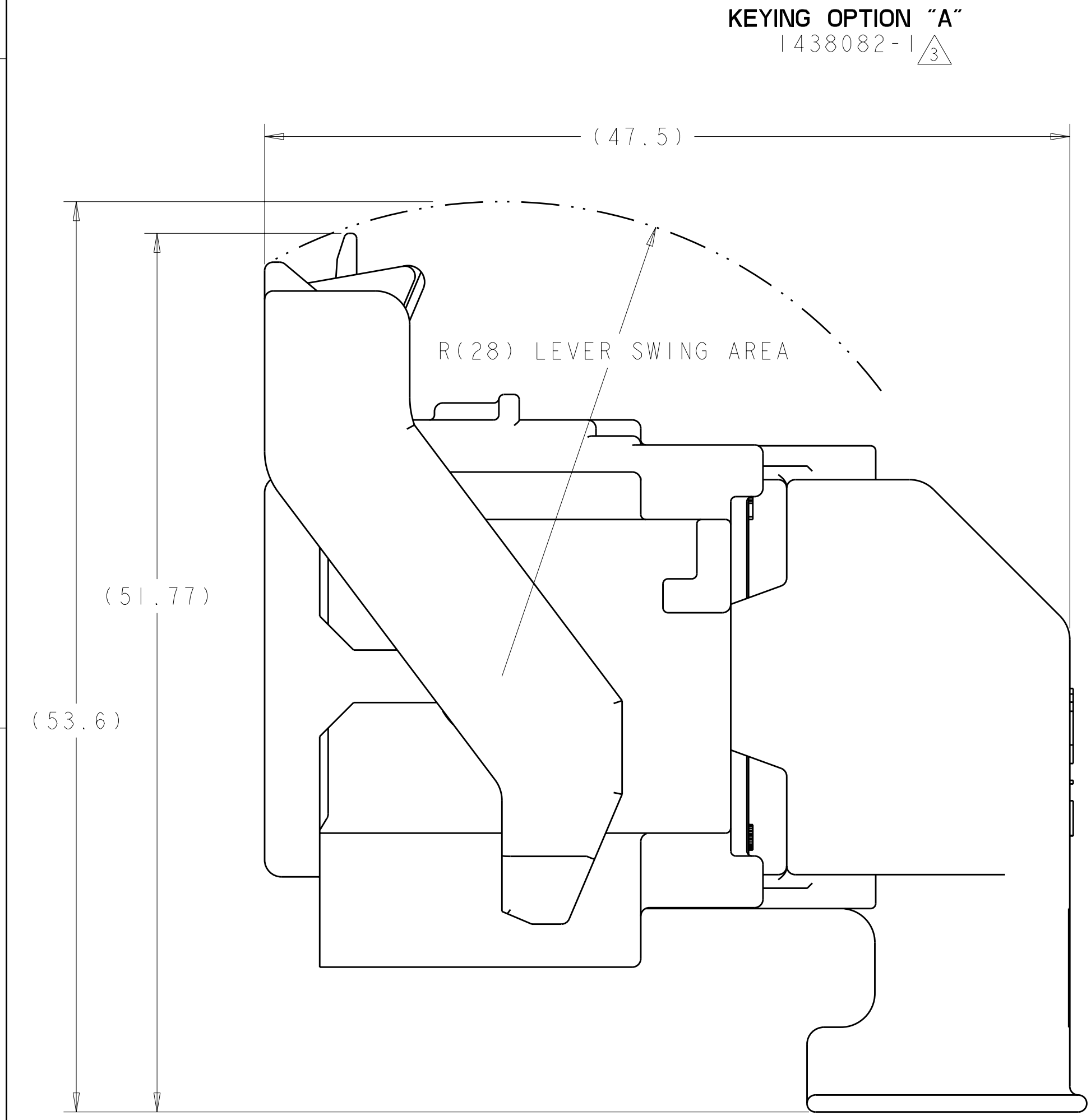


SCALE 1 : 1

KEYING OPTION "B"
1438082-2 




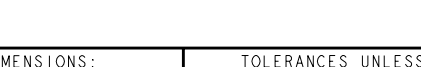
△ MATERIAL:
HARNES - 35% GLASS FILLED PA66, BLACK
ALT MAT'L: HARNES - 30% GLASS FILLED sPS, BLACK
SPACER - 40% GLASS FILLED PPS+PA66, RED
ALT MAT'L: 30% GLASS FILLED sPS, RED
ALT MAT'L: 35% GLASS FILLED PA66, RED
COVER - 35% GLASS FILLED PA66, BLACK
ALT MAT'L: COVER - 30% GLASS FILLED LCP, BLACK
CAM LEVER - 35% GLASS FILLED NYLON, GRAY
GROMMET - SILICONE, BROWN
PERIMETER SEAL - SILICONE, GREEN

2. CAM LEVER AND SPACER ARE SHIPPED IN PRE-LATCH POSITION.

③ SEE PINOUT CHART ON SHEETS 2, 3 AND 4 FOR CLOSED CIRCUIT CONFIGURATIONS.

④ CAVITIES WITH A NUMERIC SYMBOL INDICATES CLOSED TERMINAL LOCATIONS.
BLANK CAVITIES INDICATE OPEN TERMINAL HOLE LOCATIONS.

SHOWN WITH CAM LEVER AND SPACER
IN LOADED POSITION WITH
OPTIONAL WIRESHIELD

<small>THIS DRAWING IS A CONTROLLED DOCUMENT FOR Tyco Electronics Corporation IT IS SUBJECT TO A CHANGE AND THE CUSTOMER'S ASSEMBLY ORGANIZATION SHOULD BE CONTACTED FOR THE LATEST REVISION.</small>		DWN R. VESTAL 01AUG2003 CHN D. STRAUSSER 01AUG2003 APVD D. STRAUSSER 01AUG2003		 Tyco Electronics Harrisburg, PA 17105-3608	
DIMENSIONS: mm		TOLERANCES UNLESS OTHERWISE SPECIFIED:		NAME	
		0 PLC ±. 1 PLC ±0.3 2 PLC ±0.10 3 PLC ±. 4 PLC ±. ANGLES ±°		46 Way PCM CONNECTOR HARNESS ASSEMBLY	
MATERIAL SEE TABLE		FINISH SEE TABLE		SIZE CAGE CODE DRAWING NO RESTRICTED TO A 010779 C=1438082 -	
CUSTOMER DRAWING				SCALE 4:1 SHEET 1 OF 5 REV \$1	

LOC	DIST	REVISIONS					
FX	00	P	LTR	DESCRIPTION	DATE	DWN	APVD
		-		SEE SHEET I	-	-	-

		44								35		32							22								12		9	7	6				1	6-1438735-7	2LIT-14A464-SD-086															
		44								35		32															12		9	7	6				1	6-1438735-3	2LIT-14A464-SD-085															
										35																											6-1438735-2	2LIT-14A464-SD-084														
			43	42		40	39		37					29					20	18			15	14			11	10	9	8	7			4	3	1	6-1438735-1	2LIT-14A464-SD-083														
45		43						38		36			31				25	24					18	17	16		14	12				7	6			2	1	5-1438735-0	2LIT-14A464-SD-082													
45		43						38		36			31				25	24							16		14	12				7	6				2	1	4-1438735-9	2LIT-14A464-SD-081												
45		43						38		36		32	31				25	24		21	19	18	17	16		14	12				7	6				1	4-1438735-8	2LIT-14A464-SD-080														
45		43					39	38	37	36			31				25	24					18	17	16		14	13	12			9	7	6			2	1	4-1438735-7	2LIT-14A464-SD-079												
				42																20	18					13	11	10									2	1	3-1438735-8	2LIT-14A464-SD-078												
				42																20	18					13	11	10										1	3-1438735-7	2LIT-14A464-SD-077												
45		43					39	38	37	36			31				25	24		21	20	19	18	17		14	13	12			9						2	1	3-1438735-6	2LIT-14A464-SD-076												
45		43						38		36			31				25	24		21	20	19	18	17		14	12											2	1	3-1438735-5	2LIT-14A464-SD-075											
			43	42		40	39		37					29						20	18			15	14			11	10	9	8	7			4	3	2	1	3-1438735-3	2LIT-14A464-SD-074												
45		43					39	38	37	36			31				25	24			20	19	18	17		14	13	12			9							2	1	3-1438735-2	2LIT-14A464-SD-073											
45		43						38		36			31				25	24		21	20	19	18	17	16		14	12				7						2	1	3-1438735-1	2LIT-14A464-SD-072											
45		43					39	38	37	36			31				25	24		21	20	19	18	17	16		14	13	12			9	7					2	1	3-1438735-0	2LIT-14A464-SD-071											
45		43						38		36			31				25	24		21	20	19			16		14	12				7						2	1	2-1438735-9	2LIT-14A464-SD-070											
45		43					39	38	37	36			31				25	24		21	20	19			16		14	13	12			9	7					2	1	2-1438735-8	2LIT-14A464-SD-069											
45		43						38		36			31				25	24			20	19	18	17		14	12											2	1	2-1438735-6	2LIT-14A464-SD-068											
											33																13														2-1438735-5	2LIT-14A464-SD-067										
45	44	43	42		40			38	37	36		33	31				24	22	21	20		18	17	16	15					9	8							2	2-1438735-4	2LIT-14A464-SD-066												
			43										31		29							18									8								2	2-1438735-1	2LIT-14A464-SD-065											
45		43						38		36	35		31				25	24		21					16		14	12				7	6							2	1	2-1438735-0	2LIT-14A464-SD-064									
45		43					39	38	37	36	35		31				25	24					18	17	16		14	13	12			9	7	6						2	1	1-1438735-9	2LIT-14A464-SD-063									
45		43						38		36	35		32	31			25	24		21	19	18	17	16		14	12				7	6							1	1-1438735-8	2LIT-14A464-SD-062											
45		43						38		36	35		31				25	24							16		14	12				7	6						2	1	1-1438735-7	2LIT-14A464-SD-061										
45		43						38		36	35		31				25	24		21	19			16		14	12				7	6						2	1	1-1438735-6	2LIT-14A464-SD-060											
45		43						38		36	35		31				25	24					18	17	16		14	12				7	6					2	1	1-1438735-5	2LIT-14A464-SD-059											
45		43					39	38	37	36	35		31				25	24		21	19	18	17	16		14	13	12			9	7	6					2	1	1-1438735-4	2LIT-14A464-SD-058											
45		43						38		36	35		31				25	24		21	19	18	17	16		14	12				7	6						2	1	1-1438735-3	2LIT-14A464-SD-057											
				42					37											20	18				15	14		11	10	9	8	7			4	3	2	1	1-1438735-2	2LIT-14A464-SD-056												
45		43								36	35		31				24		21	19			16		14	12					7	6							1	1-1438735-1	2LIT-14A464-SD-055											
										35						27																								3		1-1438735-0	2LIT-14A464-SD-054									
				43								31		29									18							9	8									2		1438735-9	2LIT-14A464-SD-053									
										35						27																	7									1438735-8	2LIT-14A464-SD-052									
46	45	44	43	42	41	40	39	38	37	36	35	34	33	32	31	30	29	28	27	26	25	24	23	22	21	20	19	18	17	16	15	14	13	12	11	10	9	8	7	6	5	4	3	2	1		PART NUMBER	FORD PART NUMBER				
TERMINAL HOLE POSITION																																																				
PIN-OUT CHART KEYING OPTION "A"																																																				

THIS DRAWING IS UNPUBLISHED. IT IS SUBJECT TO CHANGE WITHOUT NOTICE FOR TYCO ELECTRONICS CORPORATION. IT IS THE RESPONSIBILITY OF THE USER TO OBTAIN THE LATEST EDITION. SHOULD BE CONTACTED FOR THE LATEST EDITION.

DIMENSIONS:

mm

MATERIAL

-

TOLERANCES UNLESS OTHERWISE SPECIFIED:

9 PLC ±.3
1 PLC ±0.10
5 PLC ±.
4 PLC ±.
ANGLES ±°
FINISH -

WEIGHT

-

DWN R. VESTAL 01AUG2003
CHK D. STRAUSSER 01AUG2003
APVD D. STRAUSSER 01AUG2003

NAME

46 WAY PCM CONNECTOR HARNESS ASSEMBLY

SIZE

A

CAGE CODE

00779

DRAWING NO

C=1438082

RESTRICTED TO

-

CUSTOMER DRAWING

SCALE 4:1

SHEET 3 OF 5

REV S 11

Tyco Electronics
Harrisburg, PA 17105-3608

PRODUCT SPEC

APPLICATION SPEC

WEIGHT

CUSTOMER DRAWING

[illegible][illegible]

Mouser Electronics

Authorized Distributor

Click to View Pricing, Inventory, Delivery & Lifecycle Information:

[TE Connectivity:](#)

[4-1438082-3](#)