

This drawing involves proprietary design rights of Tyco Electronics Corporation, and all design, manufacture, reproduction, use and sale rights regarding the same are expressly reserved. It is submitted for a specific purpose and the recipient by accepting this drawing assumes custody and control and agrees to take reasonable precautions: (a) that this drawing will not be copied and reproduced in whole or in part, or its contents revealed to any manner, or to any person except to meet the purpose for which it was delivered and (b) that any special features peculiar to this design will not be incorporated in other projects without the expressed written permission of Tyco Electronics Corporation.

REVISIONS			
EC	REV	DESCRIPTION	DATE
CPR	A	NEW RELEASE	2/3/06

NOTES: UNLESS OTHERWISE SPECIFIED

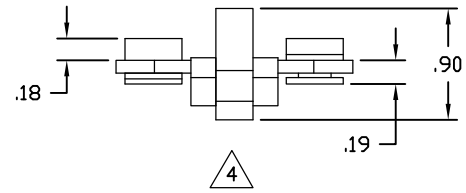
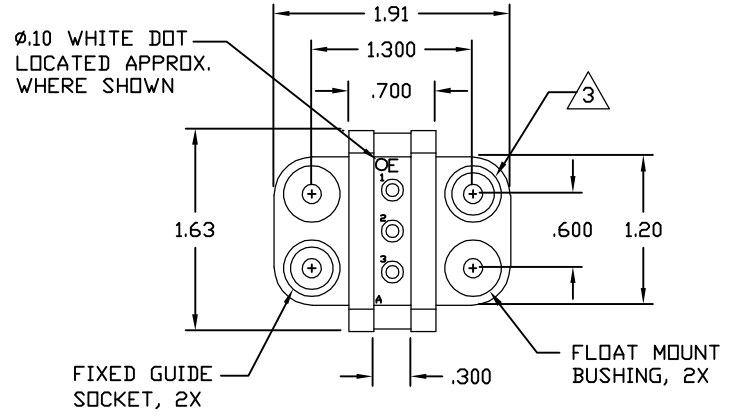
- PART NUMBER CHANGES AND OR DESIGN CHANGES AFFECTING ITEM INTERCHANGEABILITY REQUIRE PRIOR TYCO APPROVAL AND AUTHORIZATION BY REVISION TO THIS DRAWING.
- ITEMS PROVIDED TO THIS SPECIFICATION SHALL BE PERMANENTLY IDENTIFIED WITH THE FOLLOWING INFORMATION: MFG. IDENTIFICATION, PART NUMBER AND DATE CODE OF MANUFACTURE.
- MOUNTING FLANGES BUSHING ACCEPT 6/32 SCREW (Ø.156 CLEARANCE HOLE, FLOAT MOUNT) OR 8/32 SCREW (Ø.173 CLEARANCE HOLE, FIXED MOUNT), USER SUPPLIED.
- MODULE A SOCKET CRIMP CONTACTS 1648318-2 ARE PURCHASED SEPARATELY.
- SOCKET CONNECTOR ASSEMBLY INCLUDES END CAPS, LOCKING RAILS AND SCREWS.

PART NUMBER	DESCRIPTION	QTY
6648252-1	END CAP, FLOAT MOUNT, GUIDE SOCKET	2
1650469-1	LOCKING RAIL, EXTRUDED	.80*
1766846-1	SCREW, PAN HEAD, #2-64 X .625	2

TYCO PART NUMBER
6646084-1

<div>INCH MM</div> <div>OR INCH (MM)</div> <div></div> <div>THIRD ANGLE PROJECTION</div> <div>UNLESS OTHERWISE SPECIFIED DIMENSIONS ARE IN INCHES (METRIC)</div> <div>TOLERANCES</div> <div>ANGLES ± .5°</div> <div>DECIMALS</div> <div>.XXX ± .010 (.25)</div> <div>.XX ± .02 (.3)</div>	DRAWN R. F. A.	DATE 2/3/06	<div> Tyco Electronics Corporation Menlo Park, Ca 94025</div> <div></div>		
	CHECKED		TITLE CONNECTOR, SOCKET A MODULE, DOMINO		
	APPROVED				
	APPROVED D. CHAU	2/3/06			
	DCA APPROVED		SIZE B	DWG NUMBER C= 6646084	REV. A
ACAD FILE NUMBER		C6646084A.DWG		DWG SCALE	1=1
				SH 1 OF 3	

This drawing involves proprietary design rights of Tyco Electronics Corporation, and all design, manufacture, reproduction, use and sale rights regarding the same are expressly reserved. It is submitted for a specific purpose and the recipient by accepting this drawing, assumes custody and control and agrees to take reasonable precautions (a) that this drawing will not be copied and reproduced in whole or in part, or its contents revealed in any manner, or to any person except to meet the purpose for which it was delivered and (b) that any special features peculiar to this design will not be incorporated in other projects without the expressed written permission of Tyco Electronics Corporation.

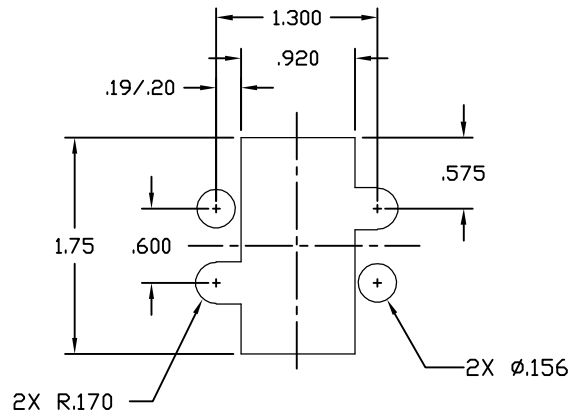


REVISIONS			
EC	REV	DESCRIPTION	DATE
		SEE SHEET 1	

<div>INCH OR INCH (MM)</div> <div></div> <div>THIRD ANGLE PROJECTION</div> <div>UNLESS OTHERWISE SPECIFIED DIMENSIONS ARE IN INCHES (METRIC)</div> <div>TOLERANCES</div> <div>ANGLES ± .5°</div> <div>DECIMALS</div> <div>.XXX ± .010 (.25)</div> <div>.XX ± .02 (.3)</div>	DRAWN R. F. A.	DATE 2/3/06	<div> Tyco Electronics Corporation Menlo Park, Ca 94025 </div>	
	CHECKED		TITLE CONNECTOR, SOCKET A MODULE, DOMINO	
	APPROVED		SIZE DWG NUMBER REV.	
	APPROVED D. CHAU DCA APPROVED	2/3/06	B	C = 6646084 A
ACAD FILE NUMBER		C6646084A.DWG		DWG SCALE 1=1 SH 2 OF 3

This drawing involves proprietary design rights of Tyco Electronics Corporation, and all design, manufacture, reproduction, use and sale rights regarding the same are expressly reserved. It is submitted for a specific purpose and the recipient by accepting this drawing assumes custody and control and agrees to take reasonable precautions (a) that this drawing will not be copied and reproduced in whole or in part, or its contents revealed in any manner, or to any person except to meet the purpose for which it was delivered and (b) that any special features peculiar to this design will not be incorporated in other projects without the expressed written permission of Tyco Electronics Corporation.

REVISIONS			
EC	REV	DESCRIPTION	DATE
		SEE SHEET 1	



PANEL MOUNT CUTOUT

<div>INCH MM</div> <div>THIRD ANGLE PROJECTION</div> <div>UNLESS OTHERWISE SPECIFIED DIMENSIONS ARE IN INCHES (METRIC)</div> <div>TOLERANCES</div> <div>ANGLES ± .5°</div> <div>DECIMALS</div> <div>.XXX ± .010 (.25)</div> <div>.XX ± .02 (.3)</div>	DRAWN R. F. A.	DATE 2/3/06	<div>tyco Tyco Electronics Corporation Electronics Menlo Park, Ca 94025</div> <div>ELCON</div>	
	CHECKED		TITLE CONNECTOR, SOCKET A MODULE, DOMINO PANEL MOUNT CUTOUT	
	APPROVED		SIZE DWG NUMBER REV.	
	APPROVED D. CHAU	2/3/06	B C= 6646084 A	
	DCA APPROVED		ACAD FILE NUMBER C6648084A.DWG DWG SCALE 1=1 SH 3 OF 3	

Mouser Electronics

Authorized Distributor

Click to View Pricing, Inventory, Delivery & Lifecycle Information:

[TE Connectivity:](#)

[6646084-1](#)