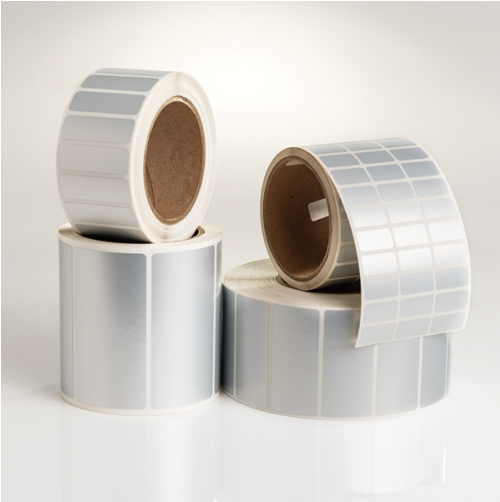


Specification Sheet

Part Number: TAG27T1-795



Thermal Transfer Labels, 1.5" x .75", 1 Across, Polyester, Silver, 3000/roll

Article Number	596-27795
Type	TAG27T1
Color	Silver (SR)
Features & Benefits	<ul style="list-style-type: none">• Thermal transfer labels are made with high performance materials for long term industrial applications.• Labels can be printed in any standard thermal transfer printer giving the user options for printing and eliminating the need to be dedicated to one printer model.• The labels are available in a wide variety of sizes so that finding a label for a particular application is easy.
Quantity Per	roll

Product Description	Labels are made with various high performance materials including polyester, metalized polyester, clear polyester, cloth, polyimide and the Durattach label stock. The construction includes an aggressive acrylic adhesive and abrasion and chemical resistant top coatings that are made to accept ink from a thermal transfer printer. The product is supplied on rolls on a 3" cardboard core.
Short Description	Thermal Transfer Labels, 1.5" x .75", 1 Across, Polyester, Silver, 3000/roll
Global Part Name	TAG27T1-795-SR
Width W (Imperial)	1.5
Width W (Metric)	38.11
Thickness T (Metric)	64.0
Height H (Imperial)	0.75
Height H (Metric)	19.05
Width of Liner (Metric)	55.88
Width of Liner (Imperial)	2.20
Material	Type 795, Polyester (795)
Material Shortcut	795

Adhesive	Acrylic
Halogen Free	No
Adhesive Operating Temperature	-40°F to +248°F (-40°C to +120°C)
Operating Temperature	-67°F to +302°F (-55°C to +150°C)
Reach Compliant (Article 33)	Yes
ROHS Compliant	Yes
Certification/Specification	UL-Recognized
UL Recognized (US)	Yes
UL Recognized (US and Canada)	Yes
Package Quantity (Imperial)	3000
Package Quantity (Metric)	3000
Customs Number	3919102055
Labels per Column	1
Labels per Row	1
Weight (Metric)	0.521
Weight (Imperial)	1.14

© 2020 HellermannTyton. All Rights Reserved.

[Contact Us](#)

[RoHS/WEEE Compliance](#)

[Disclaimer](#)

[Terms and Conditions](#)