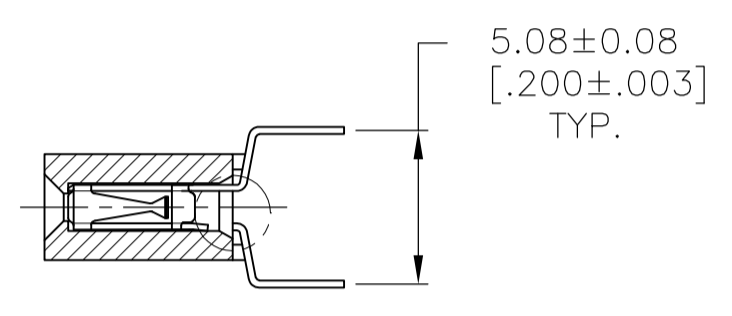
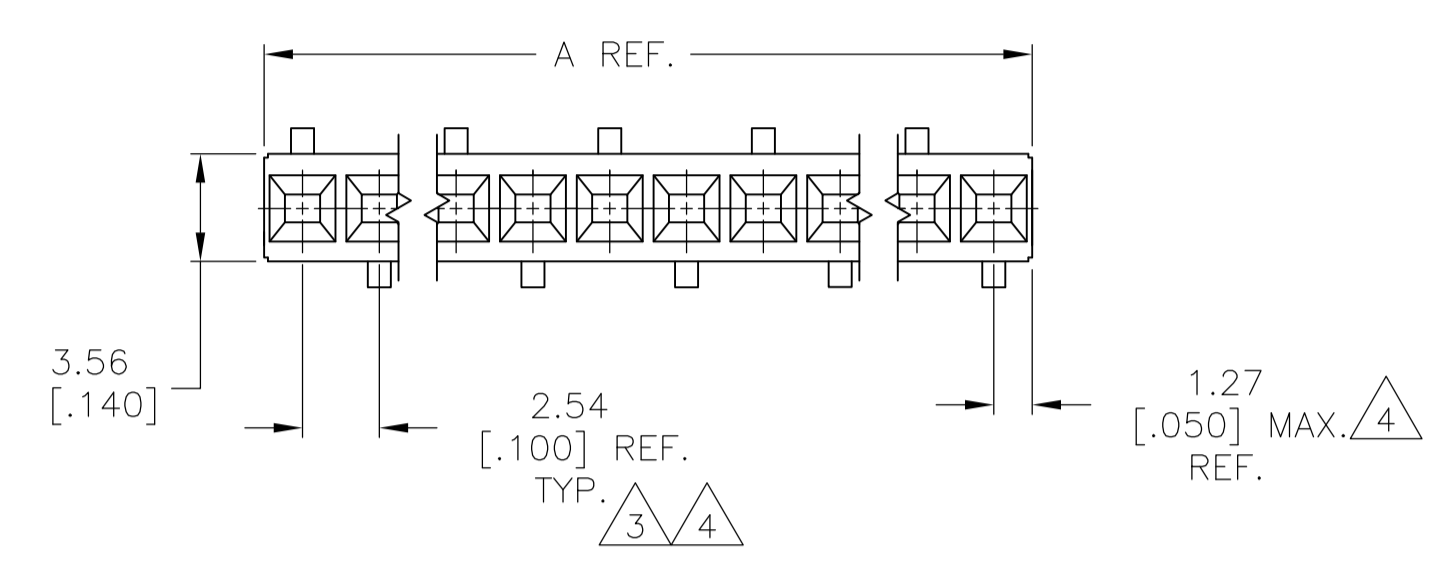


RECOMMENDED HOLE LAYOUT



- 1 MARK PART NUMBER AND DATE CODE IN APPROXIMATE LOCATION SHOWN, EITHER SIDE.
- 2 CONTACT FINISH: DUPLEX PLATED 0.25µm [.000010] GOLD IN CONTACT AREA, 3.81-7.62µm [.000150-.000300] BRIGHT TIN-LEAD ON LEADS ALL OVER 1.27µm [.000050] MIN NICKEL.
- 3 TOLERANCE NON CUMULATIVE.
- 4 THESE DIMENSIONS PERTAIN TO CAVITY CENTERLINES ONLY, NOT TO CONTACT LOCATION
- 5 HOUSING: FLAME RETARDANT, GLASS FILLED POLYESTER, BLACK. CONTACT: PHOSPHOR BRONZE.
- 6 FOR 2 POS, DATE CODE IS STAMPED OPPOSITE SIDE OF TE LOGO.
- 7 TE LOGO AND CSA LOGO ARE MOLDED INTO HOUSING.
- 8 NO PART NUMBER MARKING REQUIRED FOR THIS PART.
- 9 CONTACT FINISH: DUPLEX PLATED 0.25µm [.000010] GOLD IN CONTACT AREA, 3.81-7.62µm [.000150-.000300] MATTE TIN ON LEADS ALL OVER 1.27µm [.000050] MIN NICKEL.
- 10 ROHS 2002/95/EC COMPLIANT

99.06	[3.900]	101.60	[4.000]	40	10	8-147726-9
96.52	[3.800]	99.06	[3.900]	39	10	8-147726-8
93.98	[3.700]	96.52	[3.800]	38	10	8-147726-7
91.44	[3.600]	93.98	[3.700]	37	10	8-147726-6
88.90	[3.500]	91.44	[3.600]	36	10	8-147726-5
86.34	[3.400]	88.90	[3.500]	35	10	8-147726-4
83.82	[3.300]	86.34	[3.400]	34	10	8-147726-3
81.28	[3.200]	83.82	[3.300]	33	10	8-147726-2
78.74	[3.100]	81.28	[3.200]	32	10	8-147726-1
76.20	[3.000]	78.74	[3.100]	31	10	8-147726-0
73.66	[2.900]	76.20	[3.000]	30	10	7-147726-9
71.12	[2.800]	73.66	[2.900]	29	10	7-147726-8
68.58	[2.700]	71.12	[2.800]	28	10	7-147726-7
66.04	[2.600]	68.58	[2.700]	27	10	7-147726-6
63.50	[2.500]	66.04	[2.600]	26	10	7-147726-5
60.96	[2.400]	63.50	[2.500]	25	10	7-147726-4
58.42	[2.300]	60.96	[2.400]	24	10	7-147726-3
55.88	[2.200]	58.42	[2.300]	23	10	7-147726-2
53.34	[2.100]	55.88	[2.200]	22	10	7-147726-1
50.80	[2.000]	53.34	[2.100]	21	10	7-147726-0
48.26	[1.900]	50.80	[2.000]	20	10	6-147726-9
45.72	[1.800]	48.26	[1.900]	19	10	6-147726-8
43.18	[1.700]	45.72	[1.800]	18	10	6-147726-7
40.64	[1.600]	43.18	[1.700]	17	10	6-147726-6
38.10	[1.500]	40.64	[1.600]	16	10	6-147726-5
35.56	[1.400]	38.10	[1.500]	15	10	6-147726-4
33.02	[1.300]	35.56	[1.400]	14	10	6-147726-3
30.48	[1.200]	33.02	[1.300]	13	10	6-147726-2
27.94	[1.100]	30.48	[1.200]	12	10	6-147726-1
25.40	[1.000]	27.94	[1.100]	11	10	6-147726-0
22.86	[.900]	25.40	[1.000]	10	10	5-147726-9
20.32	[.800]	22.86	[.900]	9	10	5-147726-8
17.78	[.700]	20.32	[.800]	8	10	5-147726-7
15.24	[.600]	17.78	[.700]	7	10	5-147726-6
12.70	[.500]	15.24	[.600]	6	10	5-147726-5
10.16	[.400]	12.70	[.500]	5	10	5-147726-4
7.62	[.300]	10.16	[.400]	4	10	5-147726-3
5.08	[.200]	7.62	[.300]	3	10	5-147726-2
2.54	[.100]	5.08	[.200]	2	10	5-147726-1

99.06	[3.900]	101.60	[4.000]	40	3-147726-9
96.52	[3.800]	99.06	[3.900]	39	3-147726-8
93.98	[3.700]	96.52	[3.800]	38	3-147726-7
91.44	[3.600]	93.98	[3.700]	37	3-147726-6
88.90	[3.500]	91.44	[3.600]	36	3-147726-5
86.34	[3.400]	88.90	[3.500]	35	3-147726-4
83.82	[3.300]	86.34	[3.400]	34	3-147726-3
81.28	[3.200]	83.82	[3.300]	33	3-147726-2
78.74	[3.100]	81.28	[3.200]	32	3-147726-1
76.20	[3.000]	78.74	[3.100]	31	3-147726-0
73.66	[2.900]	76.20	[3.000]	30	2-147726-9
71.12	[2.800]	73.66	[2.900]	29	2-147726-8
68.58	[2.700]	71.12	[2.800]	28	2-147726-7
66.04	[2.600]	68.58	[2.700]	27	2-147726-6
63.50	[2.500]	66.04	[2.600]	26	2-147726-5
60.96	[2.400]	63.50	[2.500]	25	2-147726-4
58.42	[2.300]	60.96	[2.400]	24	2-147726-3
55.88	[2.200]	58.42	[2.300]	23	2-147726-2
53.34	[2.100]	55.88	[2.200]	22	2-147726-1
50.80	[2.000]	53.34	[2.100]	21	2-147726-0
48.26	[1.900]	50.80	[2.000]	20	1-147726-9
45.72	[1.800]	48.26	[1.900]	19	1-147726-8
43.18	[1.700]	45.72	[1.800]	18	1-147726-7
40.64	[1.600]	43.18	[1.700]	17	1-147726-6
38.10	[1.500]	40.64	[1.600]	16	1-147726-5
35.56	[1.400]	38.10	[1.500]	15	1-147726-4
33.02	[1.300]	35.56	[1.400]	14	1-147726-3
30.48	[1.200]	33.02	[1.300]	13	1-147726-2
27.94	[1.100]	30.48	[1.200]	12	1-147726-1
25.40	[1.000]	27.94	[1.100]	11	1-147726-0
22.86	[.900]	25.40	[1.000]	10	147726-9
20.32	[.800]	22.86	[.900]	9	147726-8
17.78	[.700]	20.32	[.800]	8	147726-7
15.24	[.600]	17.78	[.700]	7	147726-6
12.70	[.500]	15.24	[.600]	6	147726-5
10.16	[.400]	12.70	[.500]	5	147726-4
7.62	[.300]	10.16	[.400]	4	147726-3
5.08	[.200]	7.62	[.300]	3	147726-2
2.54	[.100]	5.08	[.200]	2	147726-1

11 6 8 OBSOLETE

6 8 OBSOLETE

FINISH		B	A	NO. OF POSN.	PART NUMBER
THIS DRAWING IS A CONTROLLED DOCUMENT. DIM M. BINNER 22JAN11 DIMENSIONS: mm [INCHES] TOLERANCES UNLESS OTHERWISE SPECIFIED: 0 PLC ± - 1 PLC ± - 2 PLC ± - 3 PLC ± 0.13 [.005] 4 PLC ± - ANGLES ± - MATERIAL 5 SEE TABLE FINISH SEE TABLE					
APVD J. JOLSON 20MAY02 PRODUCT SPEC 108-25022 APPLICATION SPEC 114-25018		NAME RECP.T. ASSY., MOD IV, SINGLE ROW, .100 CL, VERTICAL BD. MOUNT, CLOSED ENTRY, DUAL ENTRY, SHORT PT OF CONTACT SIZE CASE CODE DRAWING NO. A1 00779 147726 WEIGHT -		DATE 20MAY02 DRAWING NO. 147726 SCALE 4:1 SHEET 1 OF 1 REV J5	
CUSTOMER DRAWING					

Mouser Electronics

Authorized Distributor

Click to View Pricing, Inventory, Delivery & Lifecycle Information:

[TE Connectivity:](#)

[6-147726-5](#)