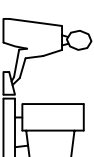
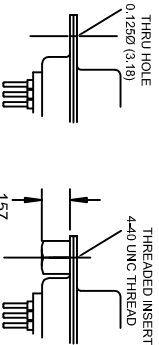


THIS IS A C.A.D. GENERATED DRAWING
DO NOT MAKE MANUAL REVISIONS TO MASTER.

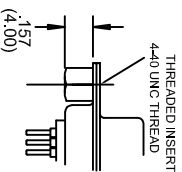


ISSUE NUMBER	
ORIGINAL	①
RE DRAWN, 50 PIN ADDED AND ORDERING CODES ADDED	⑦
N.SONDH	JUL. 13/2012

CODE 1

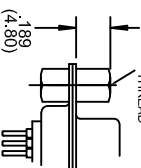


CODE 2



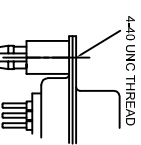
CODE 3

THREADED STANDOFF
THREADED INSERT
4-40 UNC X .130 DEEP
THREAD



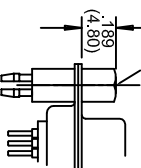
CODE 6

THREADED INSERT
BOARD LOCK



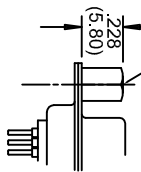
CODE 7

THREADED STANDOFF
THREADED INSERT BOARD LOCK
4-40 UNC X .130 DEEP
THREAD



CODE 8

THREADED EXED
STANDOFF
4-40 UNC THREAD



PLATING CODE

- 2 GOLD FLASH
- 3 15 MICRONS GOLD
- 6 30 MICRONS GOLD

CONTACT CODE

- 20 PC TAILS .125" (3.18) LONG
- 21 PC TAILS .165" (4.20) LONG HIGH PROFILE ONLY
- 22 SOLDER CLIP TERMINATION
- 28 2.5mm FERRITE FILTOR

EDAC INTERNAL USE

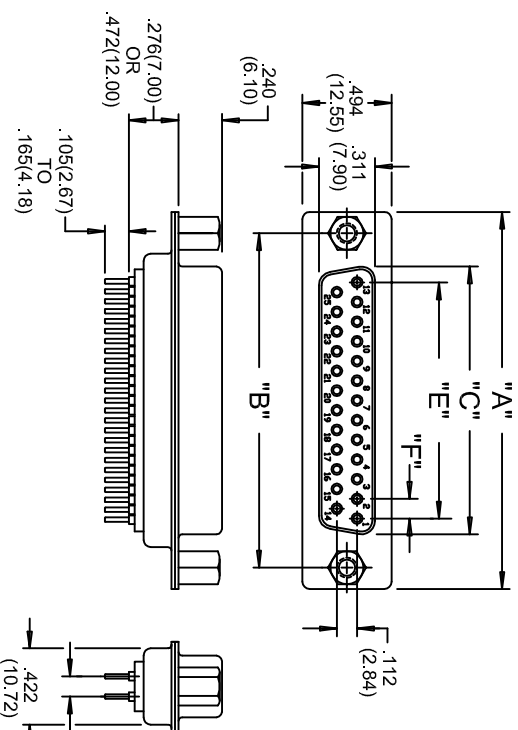
- 0 INICATE GENERIC INTERNAL CODE

GROUNDING FEATURE

- 1 PLASTIC .237 (6.02) LOW PROFILE POLYESTER
- 3 PLASTIC .452 (11.48) HIGH PROFILE POLYESTER
- 4 METAL COVERED .276 (7.00) LOW PROFILE
- 5 METAL COVERED .472 (12.00) HIGH PROFILE

MOUNTING OPTION

- 1 0.125(3.18) DIA. THROUGH HOLE
- 2 #4-40 UNC THREADED INSERT
- 3 #4-40 UNC HEX THREADED INSERT
- 4 #4-40 UNC THREADED INSERT WITH SOLDER PRONGS
- 5 #4-40 UNC THREADED STANDOFF WITH SOLDER PRONGS
- 6 #4-40 UNC THREADED INSERT WITH BOARD LOCKS
- 7 #4-40 UNC THREADED STANDOFF WITH BOARD LOCKS
- 8 #4-40 UNC THREADED FIXED STANDOFF



ORDERING CODE

628-025-320-041

SERIES _____
NUMBER OF CONTACTS _____
PLATING CODE _____
CONTACT CODE _____
EDAC INTERNAL USE _____
GROUNDING FEATURE _____
MOUNTING OPTIONAL _____

MATERIALS:

INSULATOR: THERMOPLASTIC POLYESTER, UL94V-0
CHEMICAL RESISTANCE, COLOR BLACK

SHEET: STEEL, NICKEL PLATED

CONTACT: PHOSPHOR BRONZE

SELECTIVE GOLD PLATING WITH TIN PLATING ON TAILS

ELECTRICAL:

CURRENT RATING: 5 AMPERES

DIELECTRIC WITHSTANDING VOLTAGE: 1000VAC rms AT SEA LEVEL

INSULATION RESISTANCE: 5000 MEGOHMS MIN.

CONTACT RESISTANCE: 10 MILLIOHMS MAX.

WORKING TEMPERATURE: -55° TO +125° C



THIS SERIES FULLY CONFORMS TO THE
EUROPEAN UNION DIRECTIVES 2002/95/EC
AND 2002/96/EC FOR ROHS COMPLIANCY.

NOTE: ALL CONNECTORS WITH THREADED INSERTS MUST WITHSTAND
A MIN. TORQUE OF 3 Kgf-cm

NUMBER OF CONTACTS	"A" Inch (mm)	"B" Inch (mm)	"C" Inch (mm)	"E" Inch (mm)	"F" Inch (mm)
9	1.214 (30.84)	.984 (24.99)	.642 (16.30)	.432 (10.97)	.108 (2.74)
15	1.545 (39.24)	1.312 (33.32)	.971 (24.66)	.756 (19.20)	.108 (2.74)
25	2.088 (53.04)	1.852 (47.04)	1.511 (38.38)	1.304 (33.12)	.109 (2.76)
37	2.730 (69.34)	2.500 (63.50)	2.159 (54.84)	1.956 (49.68)	.109 (2.76)
50	2.635 (66.93)	2.406 (61.11)	2.064 (52.43)	1.744 (44.68)	.109 (2.76)

628 SERIES SUBMINIATURE D CONNECTOR
RECEPTACLE(SOCKET) VERTICAL PCB METAL BODY



EDAC INC.
TORONTO, ONTARIO
CANADA
YOUR CONNECTION TO QUALITY & SERVICE

THESE DRAWINGS AND SPECIFICATIONS
ARE THE PROPERTY OF EDAC INC. AND
SHALL NOT BE REPRODUCED OR COPIED
OR USED AS THE BASIS FOR THE
MANUFACTURE OR SALE OF APPARATUS
WITHOUT WRITTEN PERMISSION.

DRAWN: N.SONDH

CHECKED: DATE: JUL. 12/12

PART NUMBER

SEE ORDERING CODE

DRAWING NUMBER
628-000-001

ISSUE
7

Mouser Electronics

Authorized Distributor

Click to View Pricing, Inventory, Delivery & Lifecycle Information:

EDAC:

[628-050-220-046](#) [628-050-222-041](#)