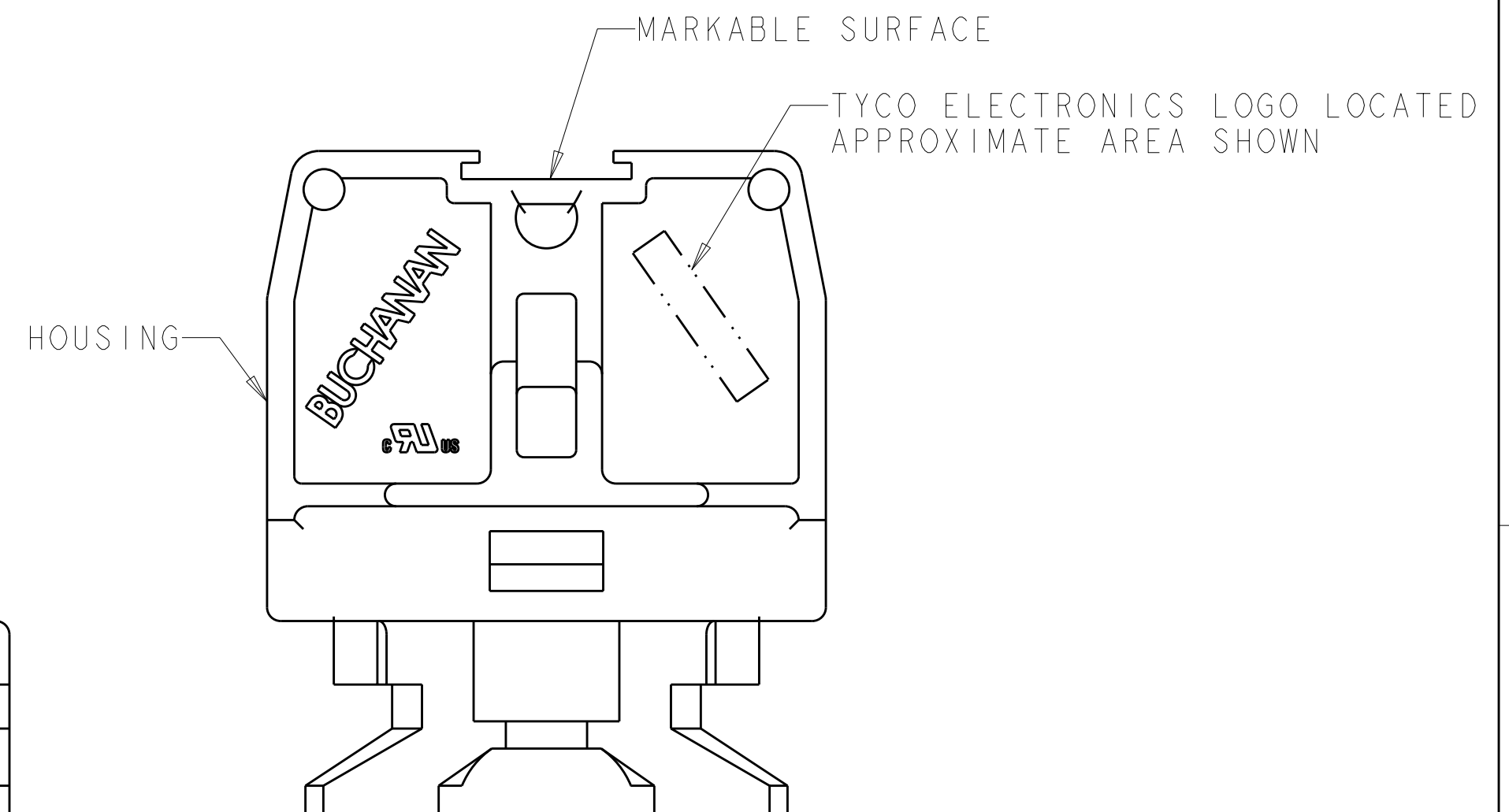
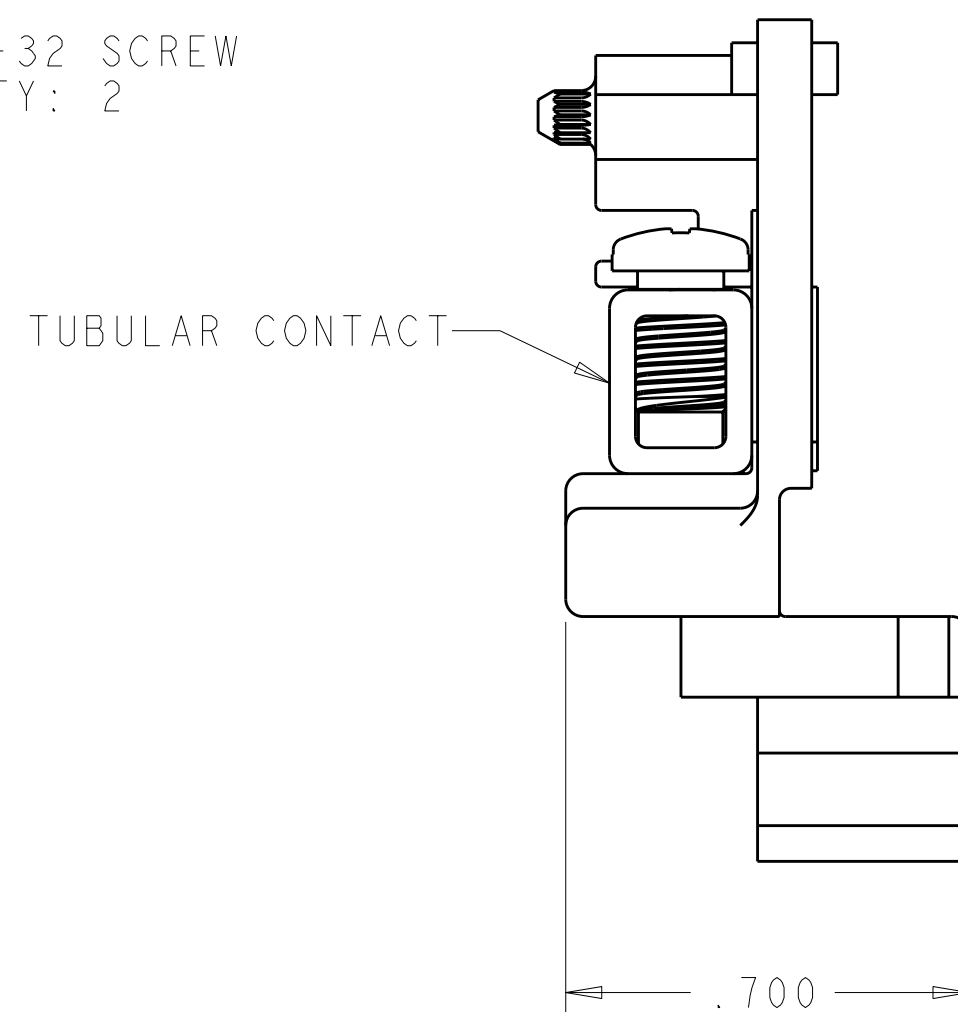
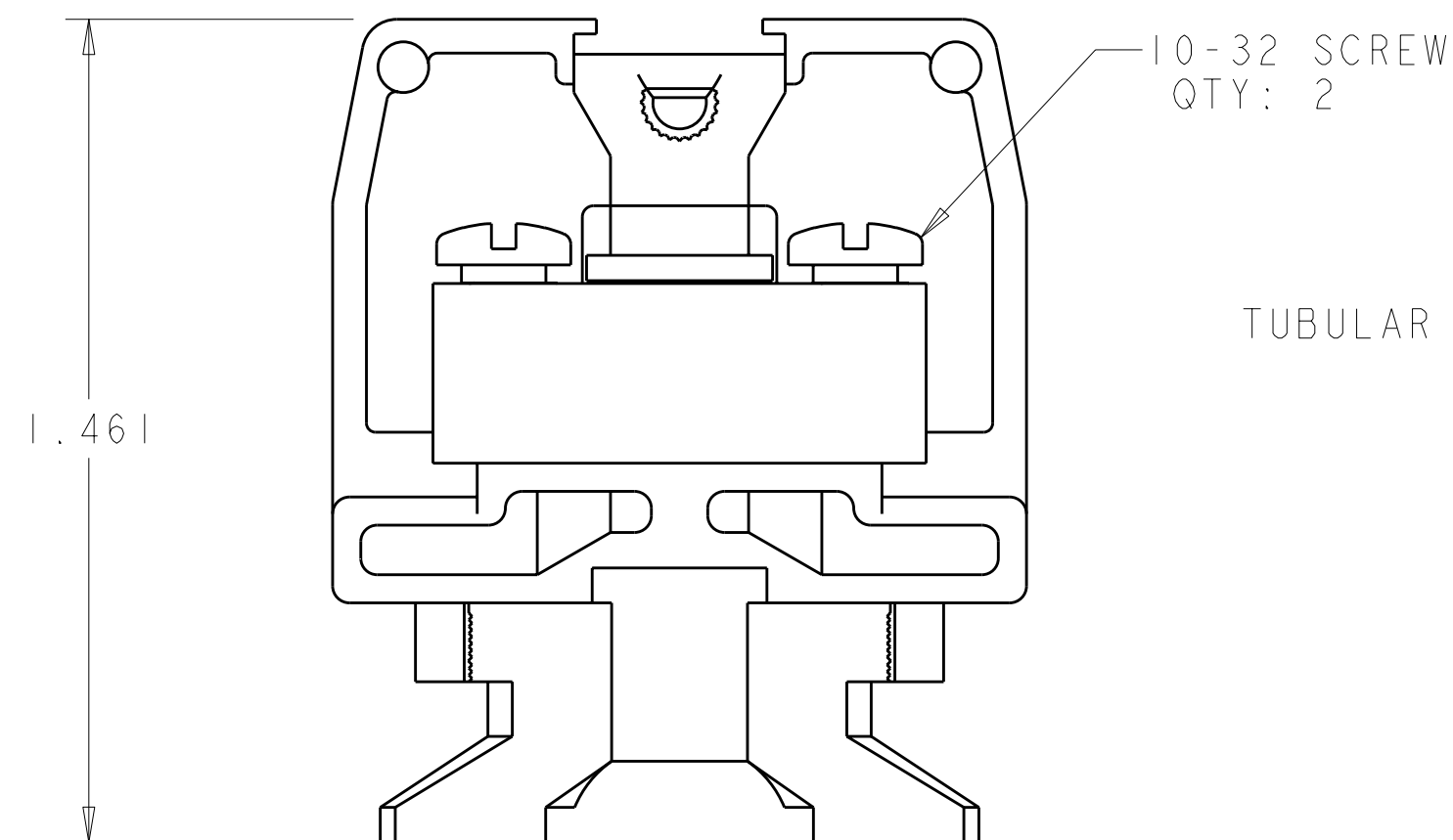
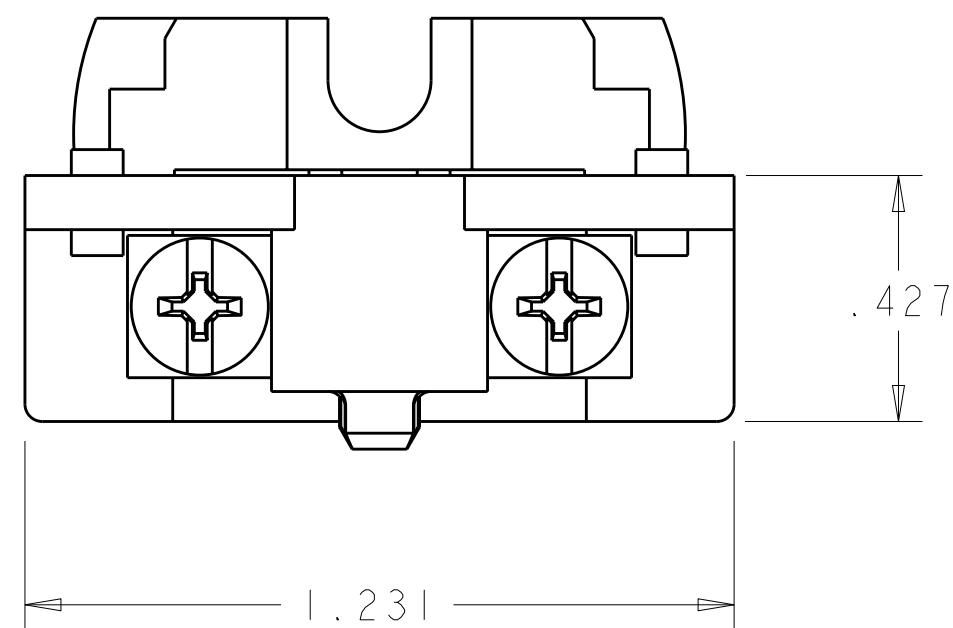







LOC	DIST	REVISIONS					
FT	0	P	LTR	DESCRIPTION	DATE	DWN	APVD
			EI	REVISED PER ECO-11-004917	12MAR2011	RK	HMR



- ① PHYSICAL PROPERTIES (STANDARD)  
HOUSING: POLYESTER, UL 94V-0 RATED, COLOR: GRAY.  
TUBULAR CONTACT: COPPER ALLOY, ZINC PLATED.  
SCREW: STEEL, ZINC PLATED CLEAR CHROMATE.
- ② PHYSICAL PROPERTIES (DURAMAX)  
HOUSING: POLYESTER, UL 94V-0 RATED, COLOR: GRAY.  
TUBULAR CONTACT: COPPER ALLOY, NICKEL PLATED.  
SCREW: COPPER ALLOY, NICKEL PLATED.
3. MECHANICAL  
PITCH: .375  
MOUNTING: STANDARD CHANNEL AND CLAMP.  
OPERATING TEMPERATURE: 150°C MAX.  
TORQUE: RECOMMENDED TIGHTENING TORQUE IS 8 IN-LBS.
4. ELECTRICAL  
MAXIMUM CURRENT: 50A  
OPERATING VOLTAGE: 600 V  
WIRE RANGE: 8-22 AWG.
- ⑤ SEE RESTRICTED CUSTOMER DRAWING 4-1437394-7.

-	4-1437394-7 
	1546148-2
	1546148-1
MATERIAL / FINISH	PART NUMBER

THIS DRAWING IS A CONTROLLED DOCUMENT.		DWN S. WELDON	15JAN2002	 TE Connectivity							
		CHK S. YODER	15JAN2002								
DIMENSIONS: INCHES	TOLERANCES UNLESS OTHERWISE SPECIFIED:	APVD S. YODER	15JAN2002	NAME	ASSEMBLY, TERMINAL BLOCK, NEMA, DOVETAIL BASE, MEDIUM DUTY, TUBULAR SCREW						
	0 PLC ±. 1 PLC ±. 2 PLC ±. 3 PLC ±.010 4 PLC ±. ANGLES ±.	PRODUCT SPEC	-	SIZE					CAGE CODE	DRAWING NO	RESTRICTED TO
		APPLICATION SPEC	-								
MATERIAL	FINISH	WEIGHT	-	A2	00779	C-1546148	-				
SEE TABLE	SEE TABLE	CUSTOMER DRAWING		SCALE	3.1	SHEET	OF	REV	E		

# Mouser Electronics

Authorized Distributor

Click to View Pricing, Inventory, Delivery & Lifecycle Information:

[TE Connectivity:](#)

[1546148-2](#)