

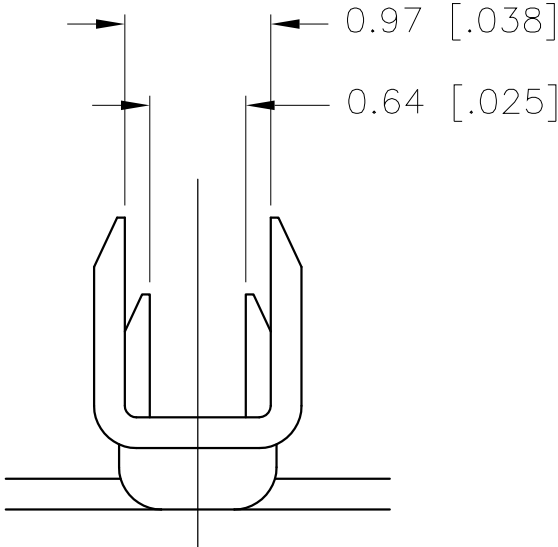
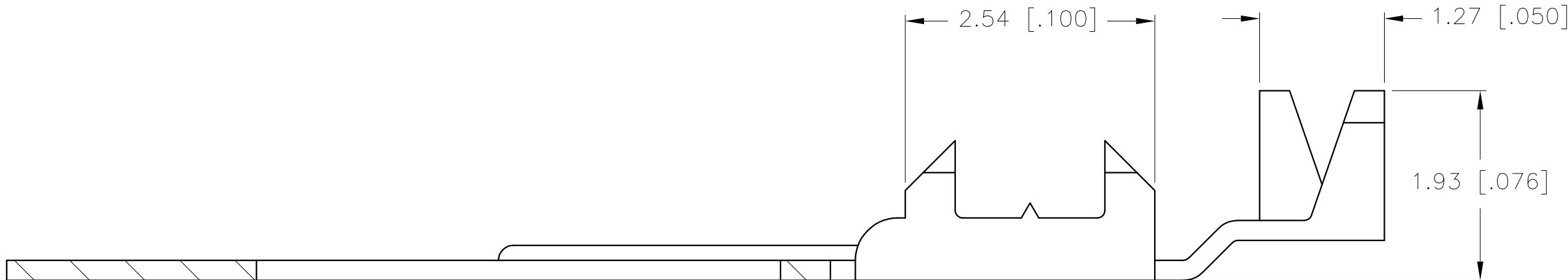
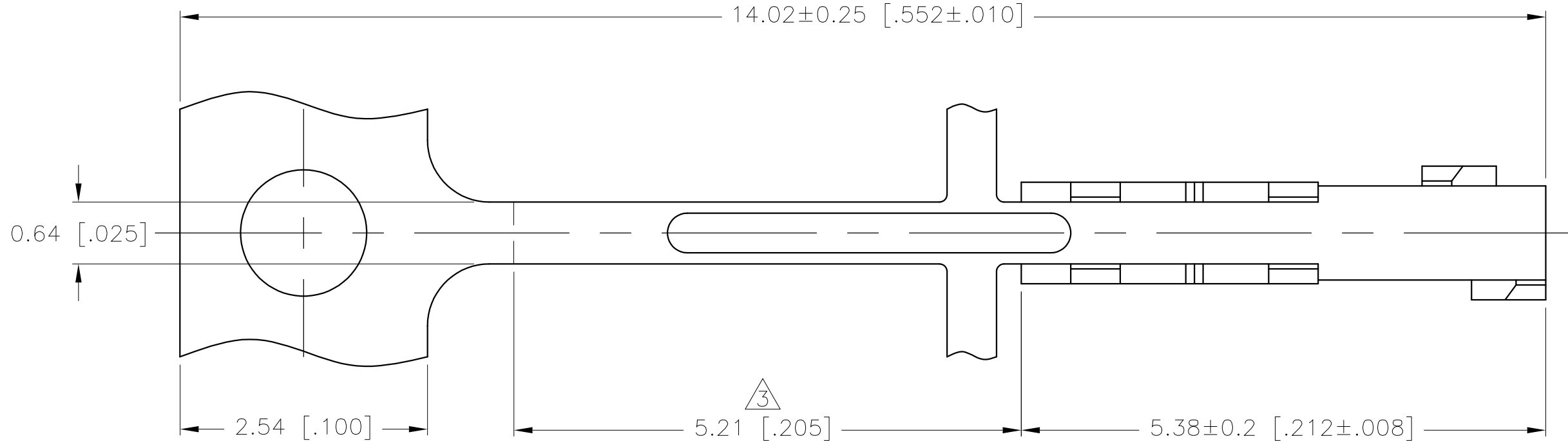
THIS DRAWING IS UNPUBLISHED.

RELEASED FOR PUBLICATION

© COPYRIGHT BY TYCO ELECTRONICS CORPORATION. ALL RIGHTS RESERVED.

LOC	DIST	REVISIONS				
GP	00	P	LTR	DESCRIPTION	DATE	APVD
			A	REVISED PER ECO-07-022535	10NOV07	JDP CWR

- 1 PHOSPHOR BRONZE, 0.20[.008] THICK.
- 2 0.00254[.000100] MIN TIN OVER 0.00127[.000050] MIN NICKEL.
- 3 APPLICATOR CUTOFF DIMENSION.



PHYSICAL PROPERTIES			
CONTACT RETENTION FORCE:	44 N		
INSERTION FORCE:	1.4 N PER CONTACT		
EXTRACTION FORCE:	1 N PER CONTACT		
ELECTRICAL PROPERTIES			
CURRENT RATING:	3 AMPS PER PIN		
ENVIRONMENTAL PROPERTIES			
TEMPERATURE RATING:	-40°C TO +105°C		

1658545-1

PART NUMBER

THIS DRAWING IS A CONTROLLED DOCUMENT.		DWN J.GERACE 26AUG04		<div><div>Tyco Electronics</div><div>Tyco Electronics Corporation Harrisburg, PA 17105-3608</div></div>							
		CHK S.BOLASH 26AUG04									
DIMENSIONS: mm [INCHES]		TOLERANCES UNLESS OTHERWISE SPECIFIED:		APVD M.WALMSLEY 26AUG04		NAME					
		0 PLC ± - 1 PLC ± - 2 PLC ± - 3 PLC ± 0.13[.005] 4 PLC ± - ANGLES ± -		PRODUCT SPEC		CONTACT, SOLDER TAB, FLEXPAC® -					
				-							
		APPLICATION SPEC		-		SIZE		CAGE CODE	DRAWING NO	RESTRICTED TO	
				-		A2		00779		C=1658545	
MATERIAL		FINISH		WEIGHT -							
CUSTOMER DRAWING								SCALE 20:1		SHEET 1 of 1	REV A

Mouser Electronics

Authorized Distributor

Click to View Pricing, Inventory, Delivery & Lifecycle Information:

[TE Connectivity:](#)

[1658545-1](#)