

Cable clamp - WCC 38 - 3240258

Please be informed that the data shown in this PDF Document is generated from our Online Catalog. Please find the complete data in the user's documentation. Our General Terms of Use for Downloads are valid (<http://phoenixcontact.com/download>)



Cable clamp, for DIN rails

Product Features

- The halogen-free plastic troughs have been designed to be perfectly secure while simultaneously protecting the conductors
- Individual or bundled cables with a diameter of up to 38 mm can be installed safely and easily
- The cable clamps provide strain relief



Key Commercial Data

Packing unit	1 pc
Minimum order quantity	25 pc
Weight per Piece (excluding packing)	72.8 g
Custom tariff number	73269098
Country of origin	China

Technical data

Dimensions

Cable diameter	34 mm ... 38 mm
----------------	-----------------

General

Material	Steel
Coating	Galvanized

Classifications

eCl@ss

eCl@ss 4.0	27141131
eCl@ss 4.1	27141131

Cable clamp - WCC 38 - 3240258

Classifications

eCl@ss

eCl@ss 5.0	27141131
eCl@ss 5.1	27141131
eCl@ss 6.0	23140390
eCl@ss 7.0	23140390
eCl@ss 8.0	23159090

ETIM

ETIM 2.0	EC000897
ETIM 3.0	EC000897
ETIM 4.0	EC000441
ETIM 5.0	EC000454

UNSPSC

UNSPSC 6.01	30211811
UNSPSC 7.0901	39121410
UNSPSC 11	39121410
UNSPSC 12.01	39121410
UNSPSC 13.2	39121410

Accessories

Accessories

DIN rail

DIN rail - NS 30/15 PERF.2000MM - 3240262

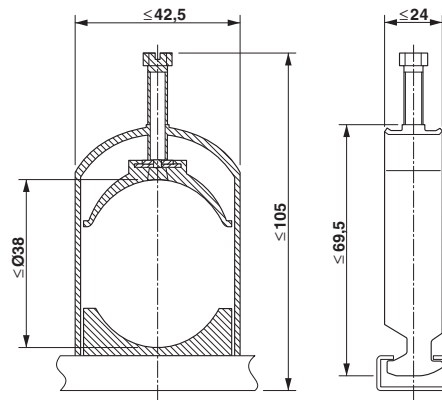


DIN rails, for accommodating cable clamps

Drawings

Cable clamp - WCC 38 - 3240258

Dimensional drawing



Mouser Electronics

Authorized Distributor

Click to View Pricing, Inventory, Delivery & Lifecycle Information:

Phoenix Contact:

3240258