

1 SHELL & KEY RETENTION PLATE: ALUMINUM ALLOY  
LOCKING POST: STAINLESS STEEL PER ASTM B883  
SPRING: STAINLESS STEEL PER AISI 301  
SPRING SUPPORT, LOCKING POST SUPPORT, GROUND BLOCK RETENTION SCREW & CAPTIVE SCREW: STAINLESS STEEL PER AISI 303  
INSERT RETENTION CLIP, GROUND CONTACT RETENTION CLIP, GROUNDING CLIP, & GROUNDING SPRING: COPPER ALLOY PER ASTM B194  
SCREW RETENTION CLIPS: STAINLESS STEEL PER AISI 304  
INTERMEDIATE PLATE: COPPER ALLOY PER ASTM B103  
GROUND BLOCK INSULATOR & POLARIZATION KEY: PEI THERMOPLASTIC PER ASTM D5205  
PROTECTIVE COVER: THERMOPLASTIC ELASTOMER

2 SHELL: ELECTROLESS NICKEL PER SAE AMS-C-26074, CLASS 1.  
INTERMEDIATE PLATE: ELECTROLYTIC NICKEL PER SAE AMS-QQ-N-290  
KEY RETENTION PLATE: ANODIZED, CLEAR  
GROUNDING CLIP: 1.27µm [50 µin] MIN GOLD PER ASTM B488 OVER 1.25 µm [50 µin] MIN NICKEL PER SAE AMS-QQ-N-290  
GROUNDING SPRING: ELECTROLYTIC NICKEL PER SAE AMS-QQ-N-290

3 DATE CODE – YEAR & WEEK (YY WW)

4 4–40 CAPTIVE SCREWS ON KEY RETENTION PLATE  
RECOMMENDED LOCKING TORQUE: 0.8 N.m [7in–lb]

5 6–32 SCREWS ARE REQUIRED FOR PANEL MOUNTING (NOT INCLUDED)  
RECOMMENDED LOCKING TORQUE: 1.6 N.m [14 in–lb]

6 THREADED HOLES ARE SELF-LOCKING, HAVING THE SPIRALOCK® THREAD FORM.  
SPIRALOCK® IS A REGISTERED TRADEMARK OF SPIRALOCK CORPORATION.

7 THE POLARIZATION KEYS & RETENTION PLATE ARE SHIPPED UNASSEMBLED.

8 SHELL CAVITY FOR GPRA SERIES INSERTS WITH KEYING CODE A.

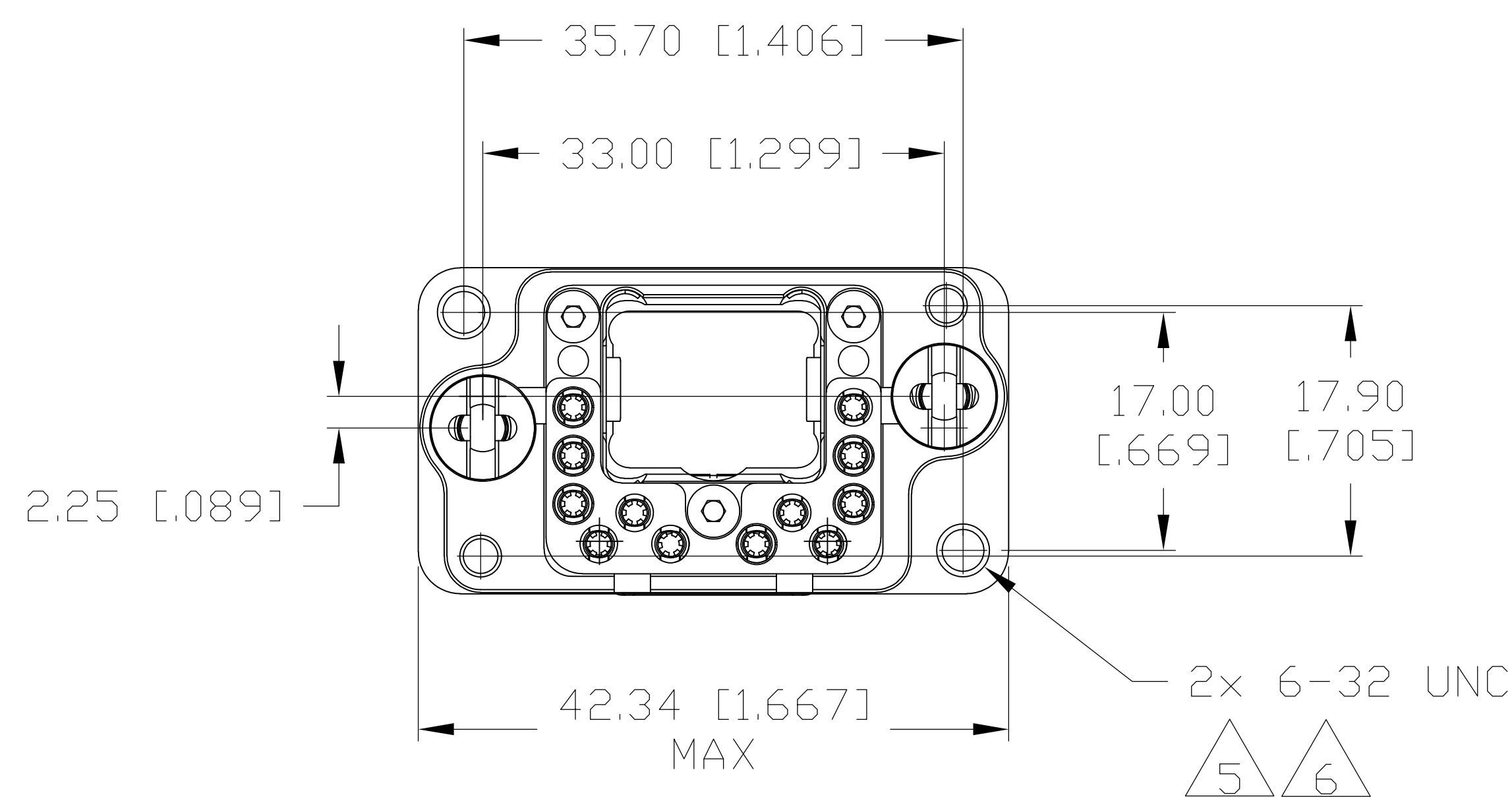
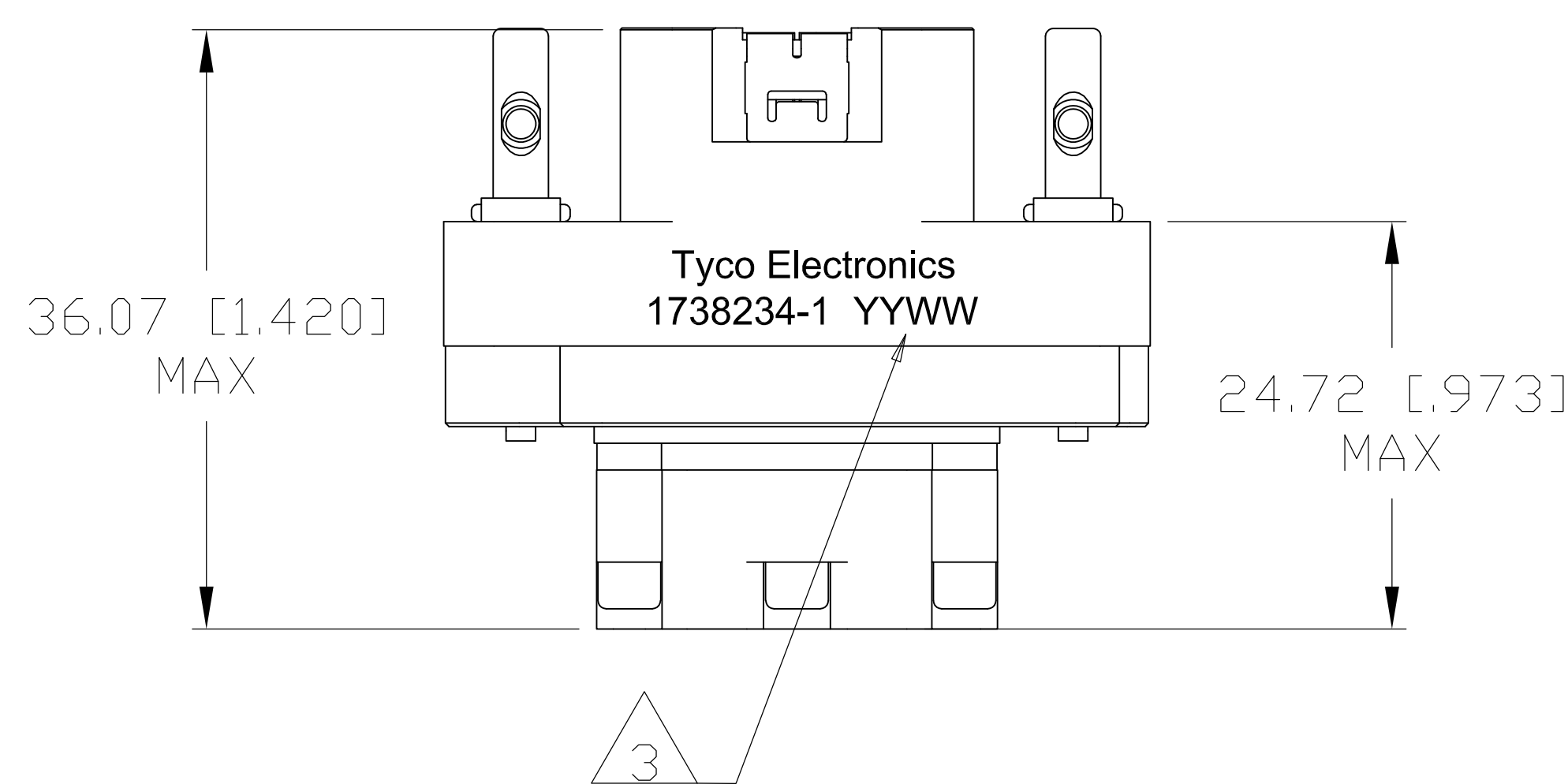
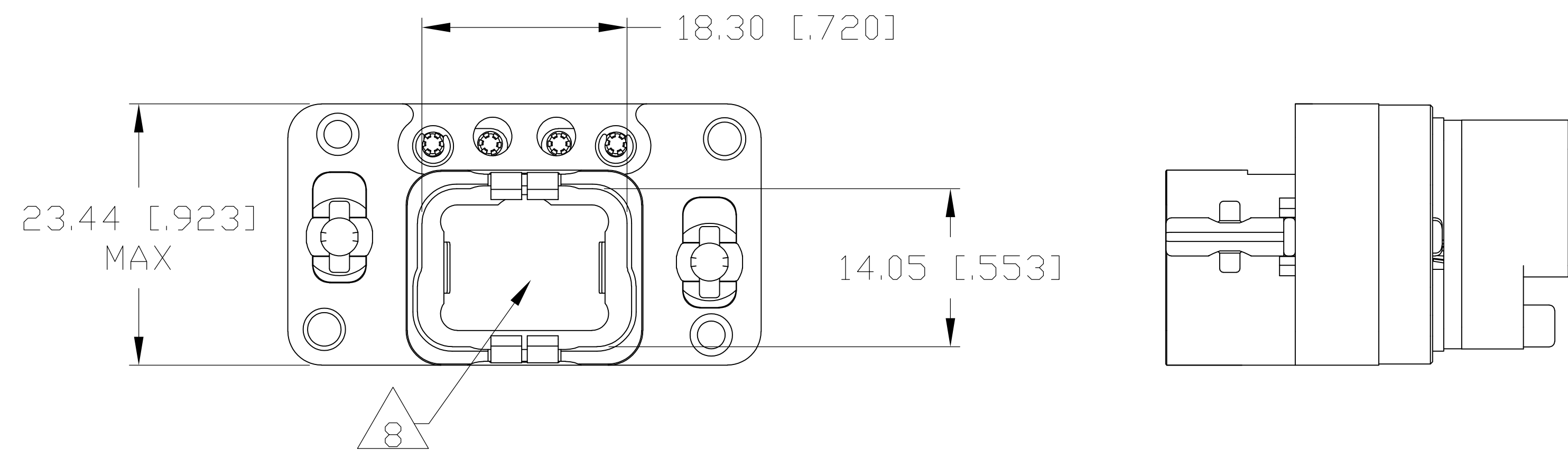
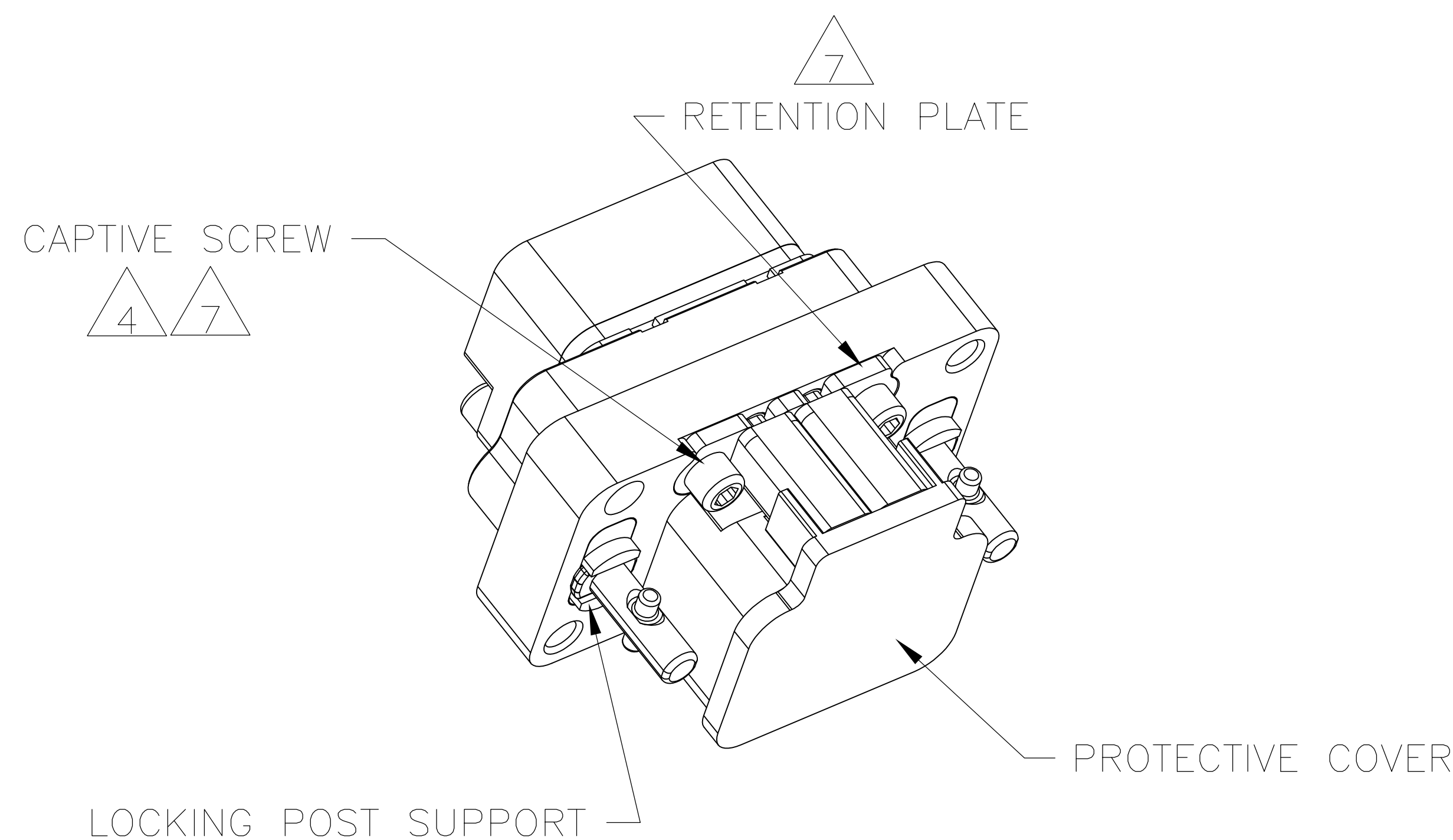
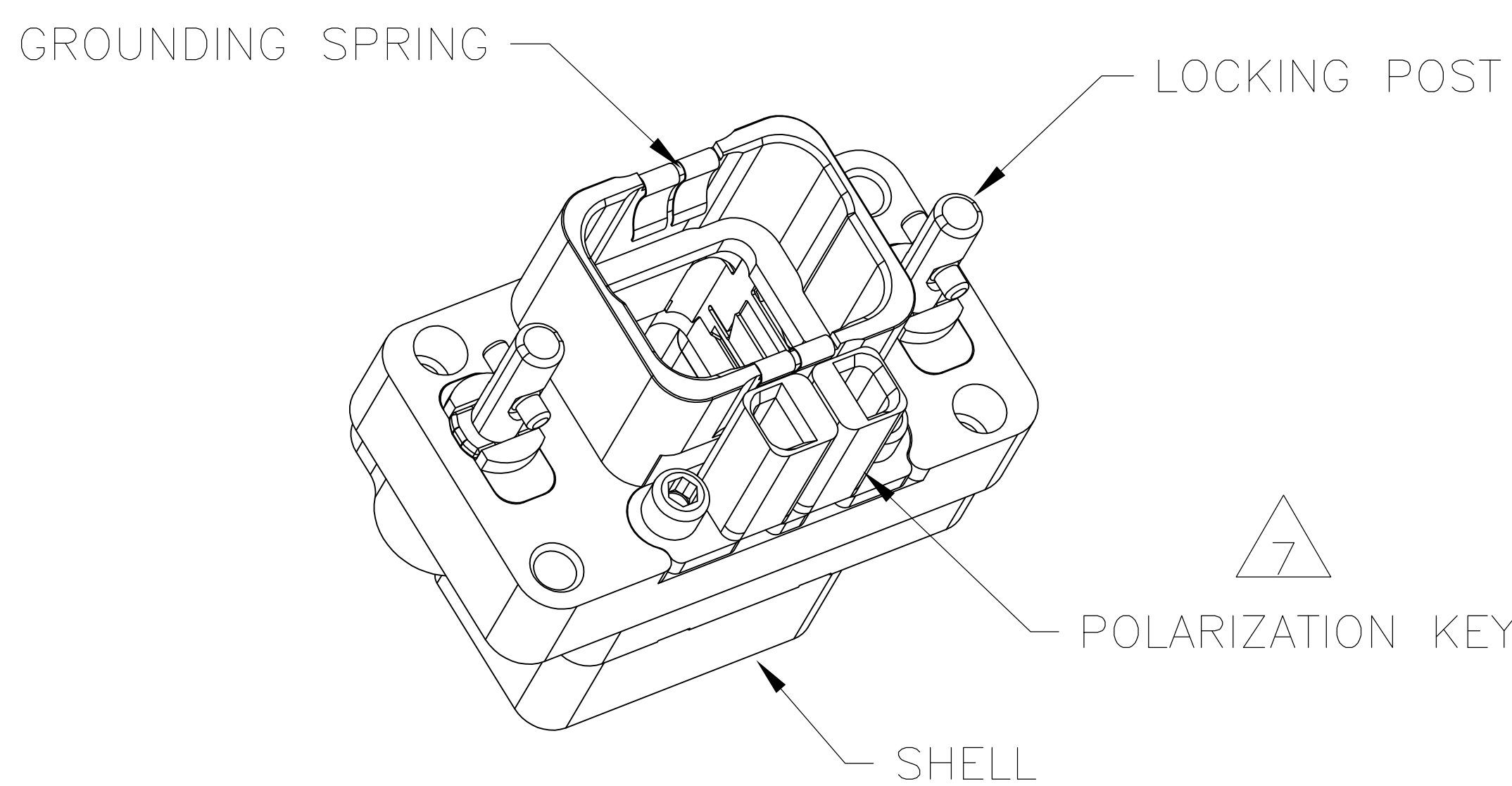
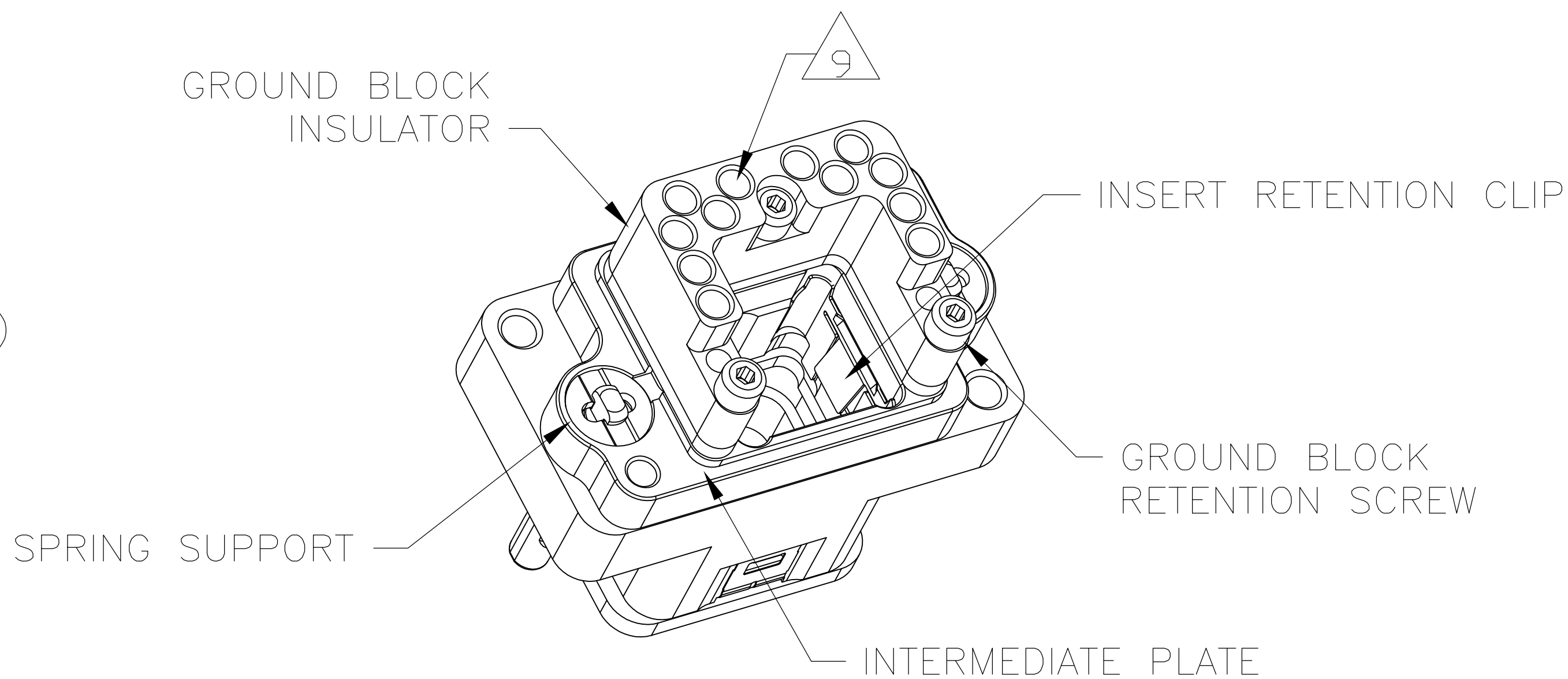
9 CAVITIES FOR GROUNDING CONTACTS PER M39029/1–101, QTY: 18

10 DATUMS ESTABLISHED BY CUSTOMER.

11 BASIC DIMENSIONS ESTABLISHED BY CUSTOMER.

12. DESCRIPTIVE PART NUMBER: GPRA1ZM04N  
SERIES: GPRA  
SHELL SIZE: 1 (SINGLE-CAVITY SHELL)  
SHELL STYLE: Z (RECEPTACLE WITH GROUND BLOCK AND GROUNDING SPRINGS)  
MODIFICATION CODE: M (TWO 6–32 UNC MOUNTING HOLES)  
LOCKING DEVICE: 0 (QUARTER-TURN FASTENER)  
POLARIZATION CODE: 4 (KIT, WITH POLARIZING HARDWARE UNASSEMBLED)  
SHELL PLATING: N (NICKEL PLATING)

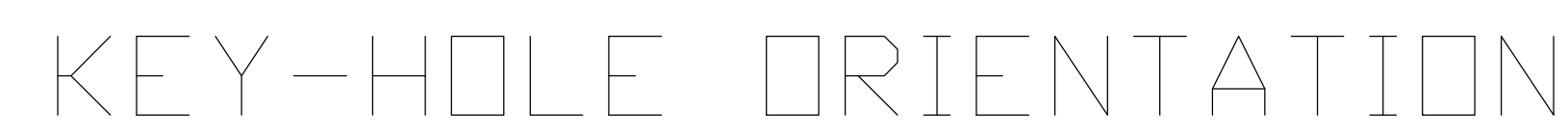
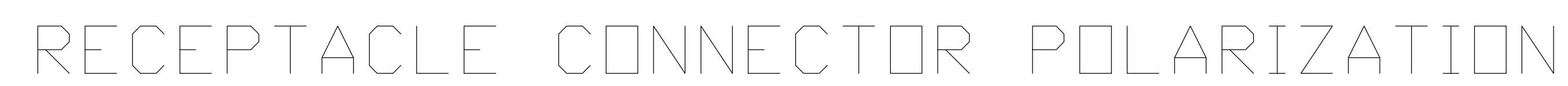
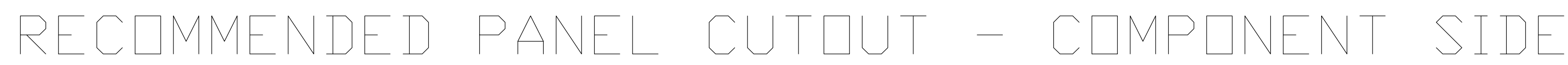
13. THIS PRODUCT IS SOLD BY TYCO ELECTRONICS  
UNDER A LICENSE FROM RADIAL SA.



THIS PRINT IS  
PRELIMINARY  
UNQUALIFIED PRODUCT  
CONTACT PRODUCT ENGINEERING  
BEFORE USING THIS PRINT

1738234-1  
PART NUMBER

THIS DRAWING IS A CONTROLLED DOCUMENT.		DATE	5-FLAUG	APPROVED	AFRICA	Tyco Electronics Corporation Harrisburg, Pa 17105-3628			
DIMENSIONS mm [INCHES]		CHG	1-MOCT02	APPROVED	AFRICA	Tyco Electronics Corporation Harrisburg, Pa 17105-3628			
TOLERANCE UNLESS OTHERWISE SPECIFIED:		APP'D	1-MOSIER	APPROVED	AFRICA	Tyco Electronics Corporation Harrisburg, Pa 17105-3628			
0. PLG ± =		PRODUCT SPEC		RECEPTACLE SHELL WITH GROUND BLOCK, WITH GROUNDING SPRINGS, WITH POLARIZING HARDWARE GPRA					
1. PLG ± 0.13 [0.005]		APPLICATION SPEC		SIZE CASE CODE DRAWING NO					
2. PLG ± =		WEIGHT		A0 00779		1738234			
3. PLG ± =		CUSTOMER DRAWING		SCALE		1:1			
4. PLG ± =		SHEET		1 OF 2		REV 2			



THIS PRINT IS  
PRELIMINARY  
UNQUALIFIED PRODUCT  
CONTACT PRODUCT ENGINEERING  
BEFORE USING THIS PRINT

1738234-1
PART NUMBER

# Mouser Electronics

Authorized Distributor

Click to View Pricing, Inventory, Delivery & Lifecycle Information:

[TE Connectivity:](#)

[1738234-1](#)