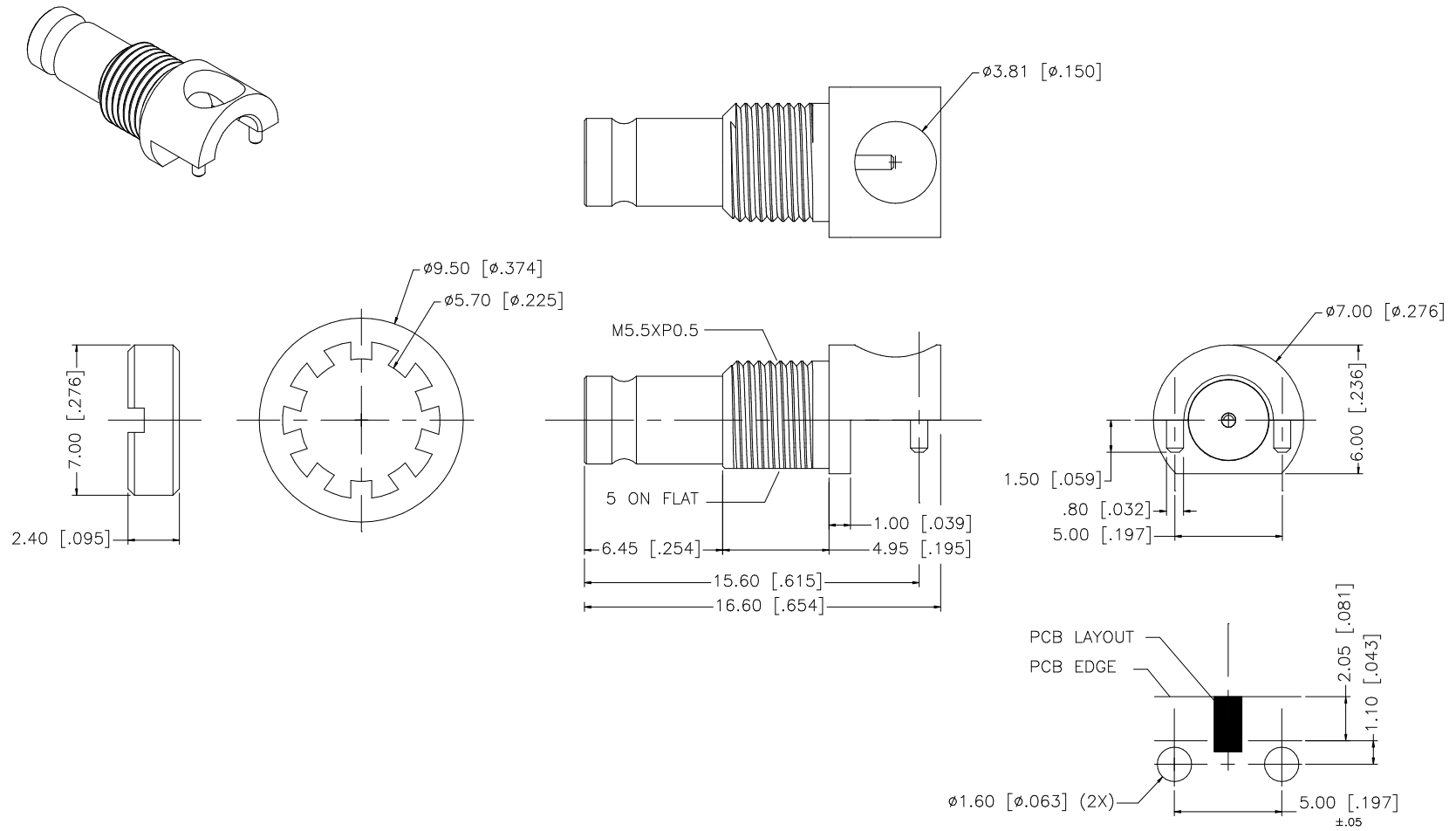


REV.	DATE	DESCRIPTION
NC	02/12/07	INITIAL RELEASE



8					UNLESS OTHERWISE SPECIFIED DIMENSIONS ARE IN MILLIMETERS. DIMENSIONS IN [ ] ARE IN INCHES AND FOR CUSTOMER REFERENCE ONLY.  UNLESS OTHERWISE SPECIFIED TOLERANCES FOR MILLIMETERS ARE: 0.5 – 8mm ± 0.20mm 8 – 30mm ± 0.40mm 30 – 120mm ± 0.50mm  UNLESS OTHERWISE SPECIFIED TOLERANCES FOR INCHES ARE: .020 – .315 = ± 0.007" .315 – 1.180 = ± 0.015" 1.180 – 4.724 = ± 0.020"  DO NOT SCALE DRAWING	APPROVALS	DATE	Amphenol Connex								
7						DRAWN	G.R.S.								02/12/07	
6						CHECKED										PART DESCRIPTION
5	SPANNER NUT	BRASS	GOLD	1		ISSUED			1.0/2.3 RECEPTACLE PC MOUNT BULKHEAD EDGECARD							
4	LOCK WASHER	BRASS	GOLD	1		SHEET	1 OF 1						PART NO.			
3	CONTACT PIN	BER. COPPER	GOLD	1	CAD FILE			282123–75								
2	INSULATOR	TEFLON	NATURAL	1	C:/282/282123–75.DWG											
1	BODY	BRASS	GOLD	1				DWG. NO.		282123–75.DWG	REV.	NC	SIZE	A	SCALE	NA
	DESCRIPTION	MATERIAL	FINISH	QTY												

# Mouser Electronics

Authorized Distributor

Click to View Pricing, Inventory, Delivery & Lifecycle Information:

[Amphenol:](#)

[282123-75](#)