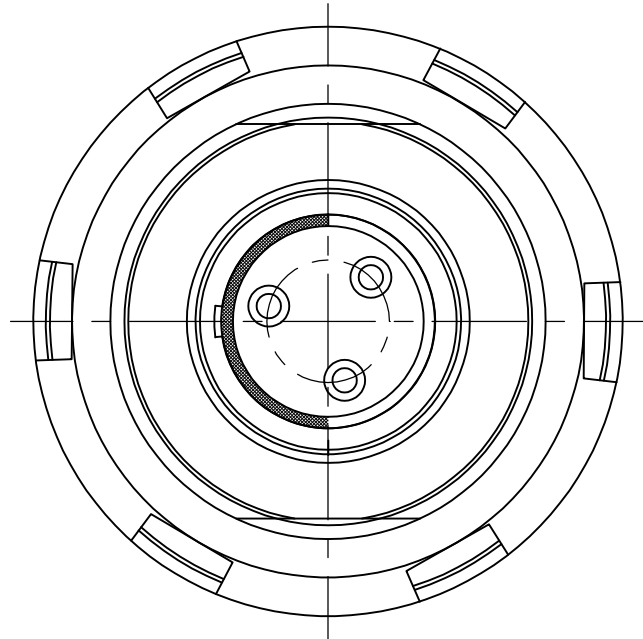
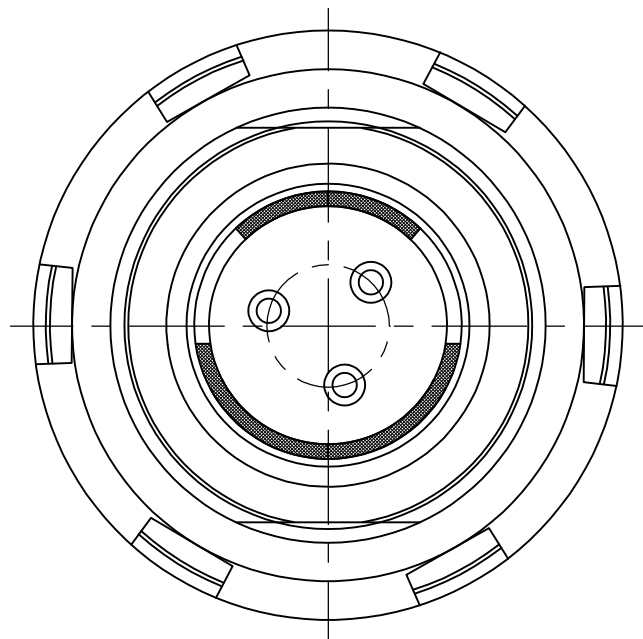


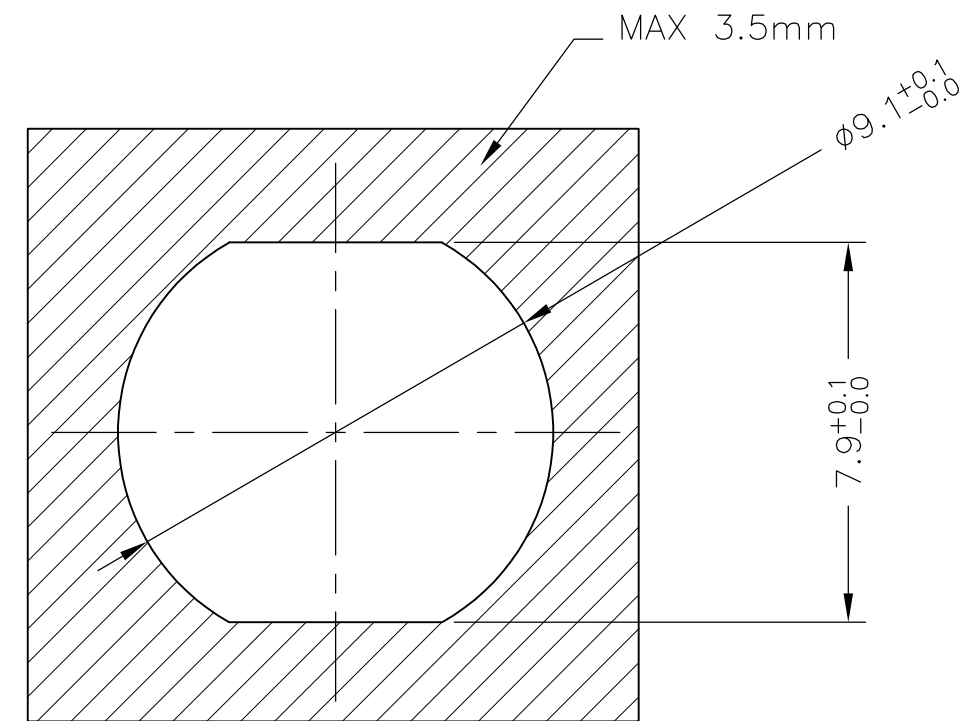
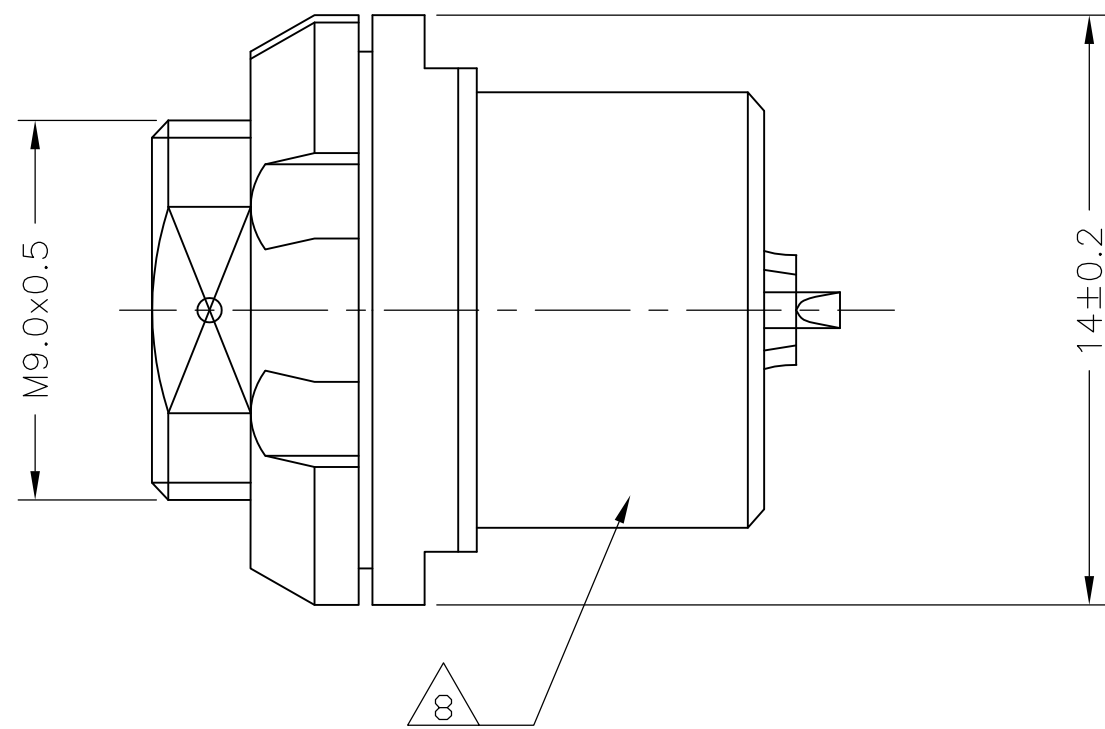
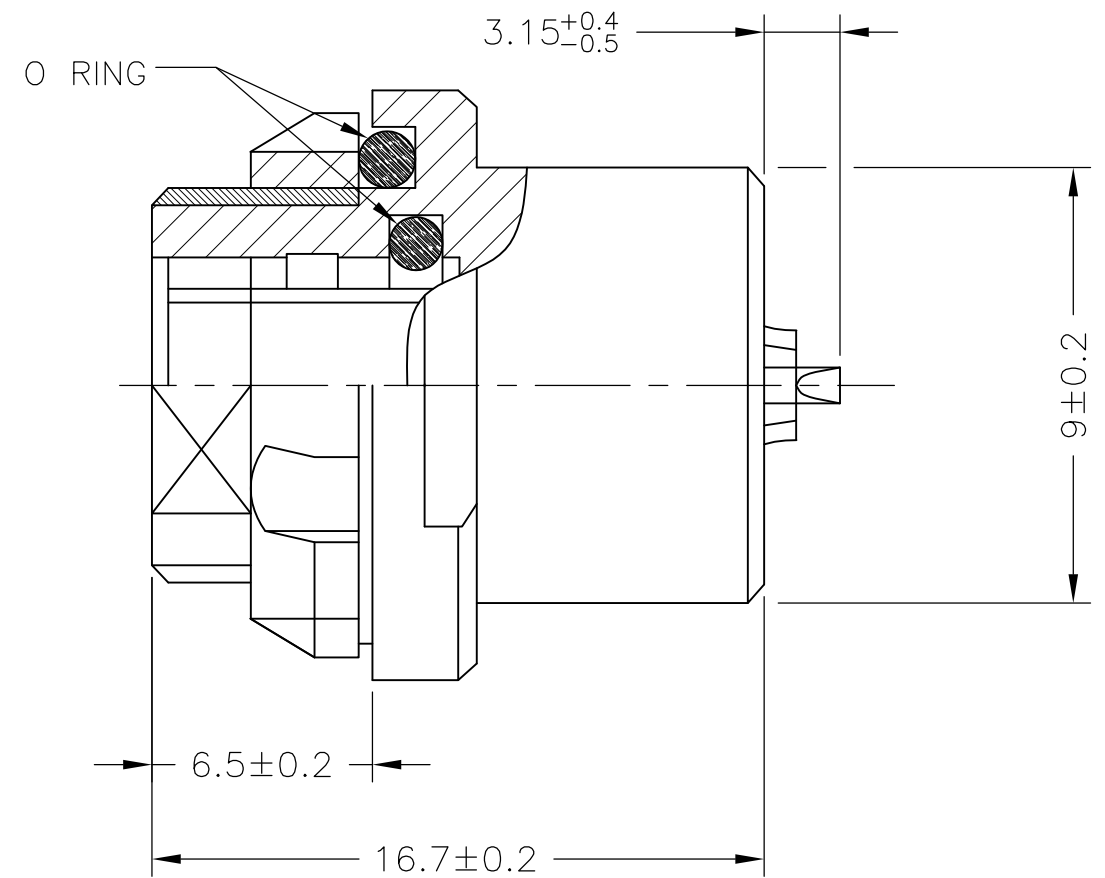
LOC —	DIST —	REVISIONS					
		P	LTR	DESCRIPTION	DATE	DWN	APVD
			C	REVISED PER ECO 13-001843.	08FEB2013	MGM	CT



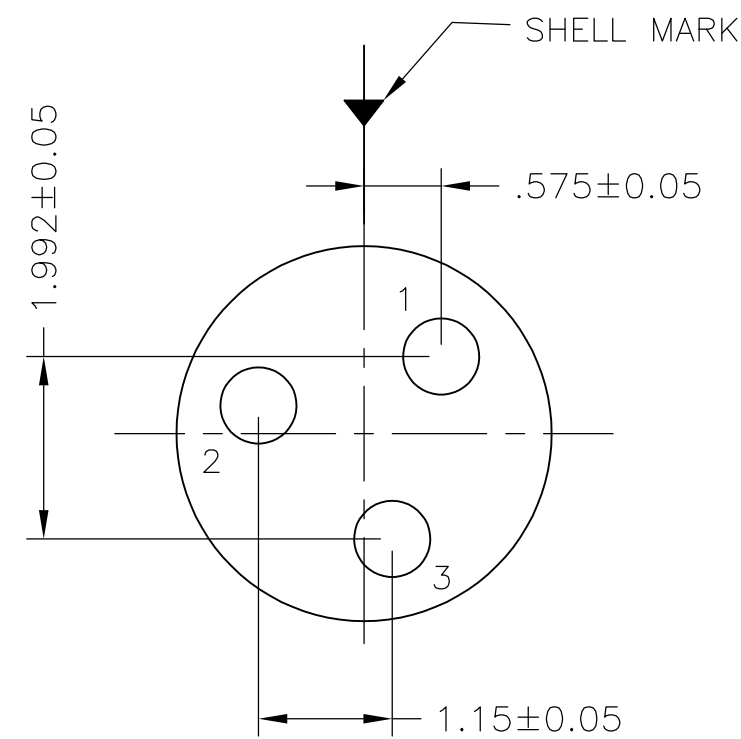
SINGLE POLARIZATION



DOUBLE POLARIZATION



PANEL CUTOUT



CAVITY IDENTIFICATION WHEN VIEWED FROM MATING FACE OF CONNECTOR

1. UNLESS OTHERWISE SPECIFIED DIMENSIONS TOLERANCE ARE ± 0.2
2. DWV RATING: 875VAC @ SEA LEVEL
3. WORKING TEMPERATURE: $-55^{\circ}\text{C} \sim +125^{\circ}\text{C}$

4 MATERIAL:

CONTACT : COPPER ALLOY

SHELL : COPPER ALLOY

INSULATOR : PEEK

O RING : SILICONE RUBBER

5 FINISH

CONTACT: GOLD OVER NICKEL


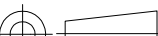
SHELL : BLACK CHROMIUM

6. WATER PROOF: 1M IMMERSION
7. WIRE SIZE: 22 AWG MAX.

8 THE PART IS MARKED WITH THE TE PART NUMBER, CHINA, DATE CODE AND LOT I.D.

9 ALL TOLERANCES TO BE ± 0.20 MM UNLESS NOTED.

1	CHROMIUM-BLACK	DOUBLE	SOLDERING	2157738-2
1	CHROMIUM-BLACK	SINGLE	SOLDERING	2157738-1
SHELL SIZE	FINISH	POLARIZATION	TERMINATION	TE CONNECTIVITY PART NUMBER

THIS DRAWING IS A CONTROLLED DOCUMENT.		DWN C.C THOMAS 20AUG2011	 TE Connectivity		
DIMENSIONS: mm		CHK R. GROSS 20AUG2011			
	TOLERANCES UNLESS OTHERWISE SPECIFIED:		NAME CIRCULAR HD RECEPTACLE WITH SOLDER CUP SOCKETS CONTACTS - 3 POS -		
	0 PLC ± -	△ 9			
	1 PLC ± -				
	2 PLC ± 0.20				
	3 PLC ± -		SIZE CAGE CODE DRAWING NO RESTRICTED TO		
	4 PLC ± -				
	ANGLES ± 3°				
	FINISH				
MATERIAL △ 4 -	△ 5 -	APVD R. GROSS 20AUG2011	A2 00779 C-2157738 -		
		PRODUCT SPEC 108-127005			
		APPLICATION SPEC -			
		WEIGHT -			
CUSTOMER DRAWING			SCALE NTS	SHEET 1 of 1	REV C

Mouser Electronics

Authorized Distributor

Click to View Pricing, Inventory, Delivery & Lifecycle Information:

[TE Connectivity:](#)

[2157738-1](#)