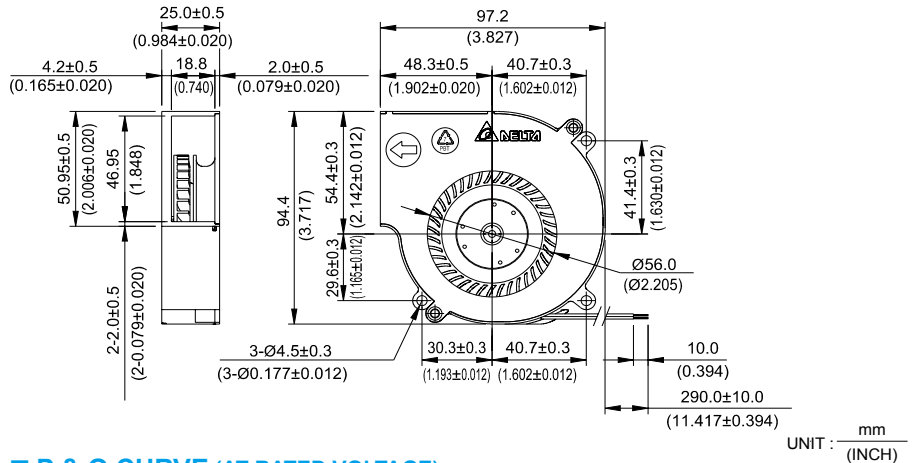
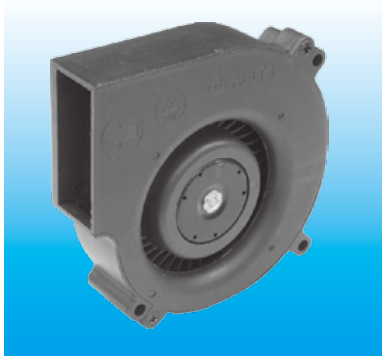


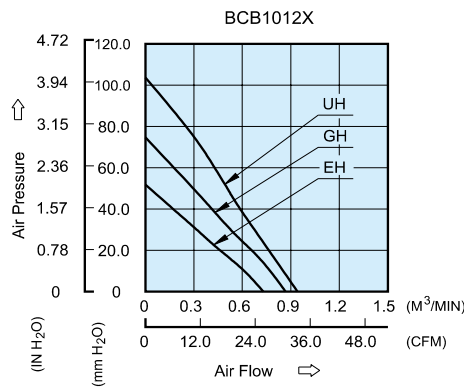
BCB 97 x 94 x 25 MM SERIES

DIMENSIONS DRAWING



- * Bearing Type
Ball Bearings
- * Material
Impeller & Frame : Plastic (UL 94V-0)
- * Lead Wires :
UL 1007 AWG #24 OR Equivalent
Red Wire Positive(+)
Black Wire Negative(-)
- * Weight : 176g (6.21 oz)

P & Q CURVE (AT RATED VOLTAGE)



MODEL		Rated Voltage	Operating Voltage Range	Input Current	Input Power	Speed	Maximum Air Flow		Maximum Air Pressure		Noise
PART NO.	FUNCTION	VDC	VDC	Amp	Watt	R.P.M.	m ³ /min	CFM	mmH ₂ O	IN H ₂ O	dB-A
BCB1012EH	-R00 / -F00	12	6.0 to 13.2	1.30	15.60	6700	0.730	25.78	51.77	2.038	63.9
BCB1012GH	-R00 / -F00	12	6.0 to 13.2	2.20	26.40	8000	0.867	30.62	74.71	2.941	67.3
BCB1012UH	-R00 / -F00	12	6.0 to 13.2	3.20	38.40	9300	1.000	35.31	102.95	4.053	67.8

* Function type is optional.
 * The max. air flow and the speed are measured in free air ; max. air pressure is measured at zero air flow.
 * Noise is measured in anechoic chamber in free air, one meter from intake side.
 * All readings are typical values at rated voltage.
 * Specifications are subject to change without notice.

Mouser Electronics

Authorized Distributor

Click to View Pricing, Inventory, Delivery & Lifecycle Information:

Delta Electronics:

[BCB1012EH](#) [BCB1012UH-F00](#) [BCB1012GH](#) [BCB1012GH-F00](#) [BCB1012EH-R00](#) [BCB1012UH](#) [BCB1012GH-R00](#)
[BCB1012UH-R00](#) [BCB1012EH-F00](#)