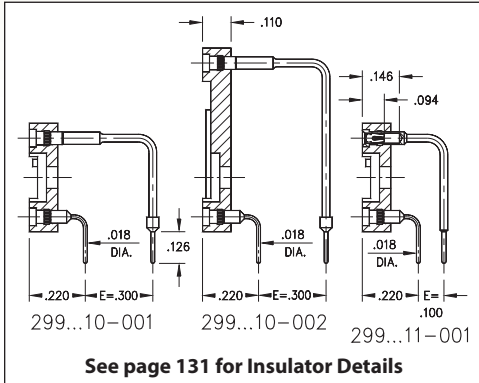
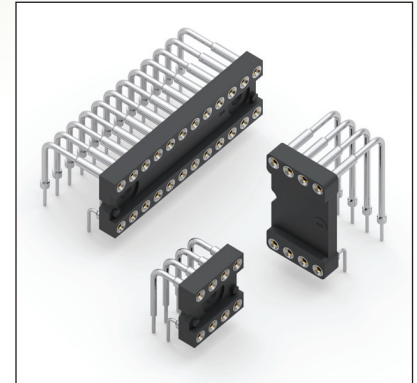


# DUAL-IN-LINE SOCKETS

## SERIES 299 • RIGHT ANGLE MOUNT • CLOSED FRAME



- Ideal for mounting components, such as LED displays, where the face must be parallel to the PCB surface
- Sockets have solder tail termination and are available with either .300" (standard) or .100" row spacing
- Series 299 uses MM #1103/0903, #1103/1610 or #1103/0904 pins. See pages 166 & 167 for details
- Hi-Rel, 4-finger BeCu #30 contact is rated at 3 amps. See page 253 for details
- Insulators are high temperature thermoplastic, suitable for all soldering operations
- For Electrical, Mechanical and Environmental Data, see page 264 for details



| Total number of pins      |     |     |     | Quantity per tube | ORDERING INFORMATION |                        |
|---------------------------|-----|-----|-----|-------------------|----------------------|------------------------|
|                           | A   | B   | C   |                   | E = .100             | E = .300               |
| 6                         | 0.3 | 0.3 | 0.4 |                   | 299-XX-306-11-001000 | * 299-XX-306-10-001000 |
| 8                         | 0.4 | 0.3 | 0.4 |                   | 299-XX-308-11-001000 | * 299-XX-308-10-001000 |
| 10                        | 0.5 | 0.3 | 0.4 |                   | 299-XX-310-11-001000 | * 299-XX-310-10-001000 |
| 12                        | 0.6 | 0.3 | 0.4 | 33                | 299-XX-312-11-001000 | * 299-XX-312-10-001000 |
| 14                        | 0.7 | 0.3 | 0.4 | 29                | 299-XX-314-11-001000 | * 299-XX-314-10-001000 |
| 16                        | 0.8 | 0.3 | 0.4 | 25                | 299-XX-316-11-001000 | * 299-XX-316-10-001000 |
| 18                        | 0.9 | 0.3 | 0.4 | 22                | 299-XX-318-11-001000 | * 299-XX-318-10-001000 |
| 20                        | 1.0 | 0.3 | 0.4 | 20                | 299-XX-320-11-001000 | * 299-XX-320-10-001000 |
| 24                        | 1.2 | 0.3 | 0.4 | 16                | 299-XX-324-11-001000 | * 299-XX-324-10-001000 |
| 8                         | 0.4 | 0.6 | 0.7 | 50                |                      | 299-XX-608-10-002000   |
| 10                        | 0.5 | 0.6 | 0.7 | 40                |                      | 299-XX-610-10-002000   |
| 12                        | 0.6 | 0.6 | 0.7 | 34                |                      | 299-XX-612-10-002000   |
| 14                        | 0.7 | 0.6 | 0.7 | 28                |                      | 299-XX-614-10-002000   |
| 16                        | 0.8 | 0.6 | 0.7 | 25                |                      | 299-XX-616-10-002000   |
| 18                        | 0.9 | 0.6 | 0.7 | 22                |                      | 299-XX-618-10-002000   |
| 20                        | 1.0 | 0.6 | 0.7 | 20                |                      | 299-XX-620-10-002000   |
| 22                        | 1.1 | 0.6 | 0.7 | 18                |                      | 299-XX-622-10-002000   |
| 24                        | 1.2 | 0.6 | 0.7 | 16                |                      | 299-XX-624-10-002000   |
| 26                        | 1.3 | 0.6 | 0.7 | 15                |                      | 299-XX-626-10-002000   |
| 28                        | 1.4 | 0.6 | 0.7 | 14                |                      | 299-XX-628-10-002000   |
| 30                        | 1.5 | 0.6 | 0.7 | 13                |                      | 299-XX-630-10-002000   |
| 32                        | 1.6 | 0.6 | 0.7 | 12                |                      | 299-XX-632-10-002000   |
| 36                        | 1.8 | 0.6 | 0.7 | 11                |                      | 299-XX-636-10-002000   |
| 40                        | 2.0 | 0.6 | 0.7 | 10                |                      | 299-XX-640-10-002000   |
| SPECIFY PLATING CODE XX = |     |     |     |                   | 93                   | 43                     |
| Sleeve (Pin)              |     |     |     |                   | 200 μ" Sn/Pb         | 200 μ" Sn              |
| Contact (Clip)            |     |     |     |                   | 30 μ" Au             | 30 μ" Au               |



XX=Plating Code  
See Below

\* Not available in tubes

# Mouser Electronics

Authorized Distributor

Click to View Pricing, Inventory, Delivery & Lifecycle Information:

## Mill-Max:

[299-93-622-10-002000](#) [299-43-312-11-001000](#) [299-43-640-10-002000](#) [299-43-636-10-002000](#) [299-43-632-10-002000](#) [299-43-630-10-002000](#) [299-43-628-10-002000](#) [299-43-626-10-002000](#) [299-43-624-10-002000](#) [299-43-622-10-002000](#) [299-43-620-10-002000](#) [299-43-618-10-002000](#) [299-43-616-10-002000](#) [299-43-614-10-002000](#) [299-43-612-10-002000](#) [299-43-610-10-002000](#) [299-43-608-10-002000](#) [299-43-324-11-001000](#) [299-43-324-10-001000](#) [299-43-320-11-001000](#) [299-43-320-10-001000](#) [299-43-318-11-001000](#) [299-43-318-10-001000](#) [299-43-316-11-001000](#) [299-43-316-10-001000](#) [299-43-314-11-001000](#) [299-43-314-10-001000](#) [299-43-312-10-001000](#) [299-43-310-11-001000](#) [299-43-310-10-001000](#) [299-43-308-11-001000](#) [299-43-308-10-001000](#) [299-43-306-11-001000](#) [299-43-306-10-001000](#) [299-93-310-10-001000](#) [299-93-310-11-001000](#) [299-93-632-10-002000](#) [299-93-618-10-002000](#) [299-93-610-10-002000](#) [299-93-628-10-002000](#) [299-93-626-10-002000](#) [299-93-318-11-001000](#) [299-93-318-10-001000](#) [299-93-308-10-001000](#) [299-93-308-11-001000](#) [299-93-316-11-001000](#) [299-93-316-10-001000](#) [299-93-306-10-001000](#) [299-93-306-11-001000](#) [299-93-312-10-001000](#) [299-93-312-11-001000](#) [299-93-612-10-002000](#) [299-93-614-10-002000](#) [299-93-630-10-002000](#) [299-93-636-10-002000](#) [299-93-320-11-001000](#) [299-93-320-10-001000](#) [299-93-640-10-002000](#) [299-93-620-10-002000](#) [299-93-314-10-001000](#) [299-93-314-11-001000](#) [299-93-324-11-001000](#) [299-93-324-10-001000](#) [299-93-624-10-002000](#) [299-93-608-10-002000](#) [299-93-616-10-002000](#)