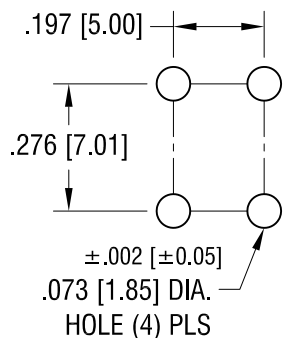
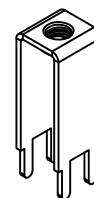


THIS DOCUMENT IS THE PROPERTY OF
KEYSTONE ELECTRONICS CORP. AND
SHALL NOT BE REPRODUCED, DISTRIBUTED
OR USED AS A BASIS FOR MANUFACTURE
WITHOUT PRIOR WRITTEN PERMISSION
FROM KEYSTONE ELECTRONICS CORP.

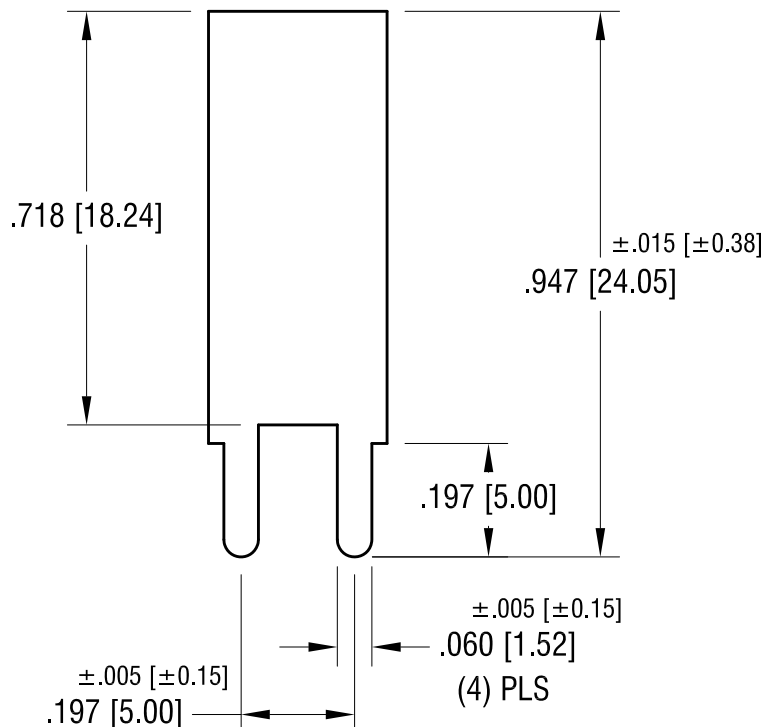
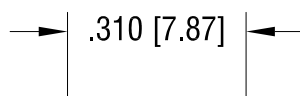
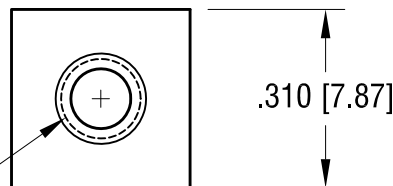
MOUNTING DETAIL



ACTUAL SIZE



6-32 THREAD
CLASS 2B



±.015 [±0.38]

.276 [7.01]

±.005 [±0.15]

.197 [5.00]

1.14.16	CHANGE AS PER ECN 16-006	D
2.25.13	CHANGE AS PER ECN 13-022	C
7.14.09	CHANGE AS PER ECN 09-100	B
2.1.08	CHANGE AS PER ECN 08-069	A
DATE	DESCRIPTION	REV.

KEYSTONE ELECTRONICS CORP.

www.keyelco.com • ASTORIA, N.Y. 11105-2017 • Tel (718) 956-8900

PART NAME

EXTENDED PC SCREW TERMINAL

MATERIAL

.032 [0.81] TH'K BRASS

FINISH

MATTE TIN PLATE

DRN BY

BOONE

DATE

9.26.01

APP'D

LN

SCALE

3X

TOLERANCES

INCH

[MM]

DECIMAL

±.010 [±0.25]

ANGULAR

± 1°

UNLESS OTHERWISE SPECIFIED

CODE

C

DWG NO.

7789

Mouser Electronics

Authorized Distributor

Click to View Pricing, Inventory, Delivery & Lifecycle Information:

[Keystone Electronics:](#)

[7789](#)