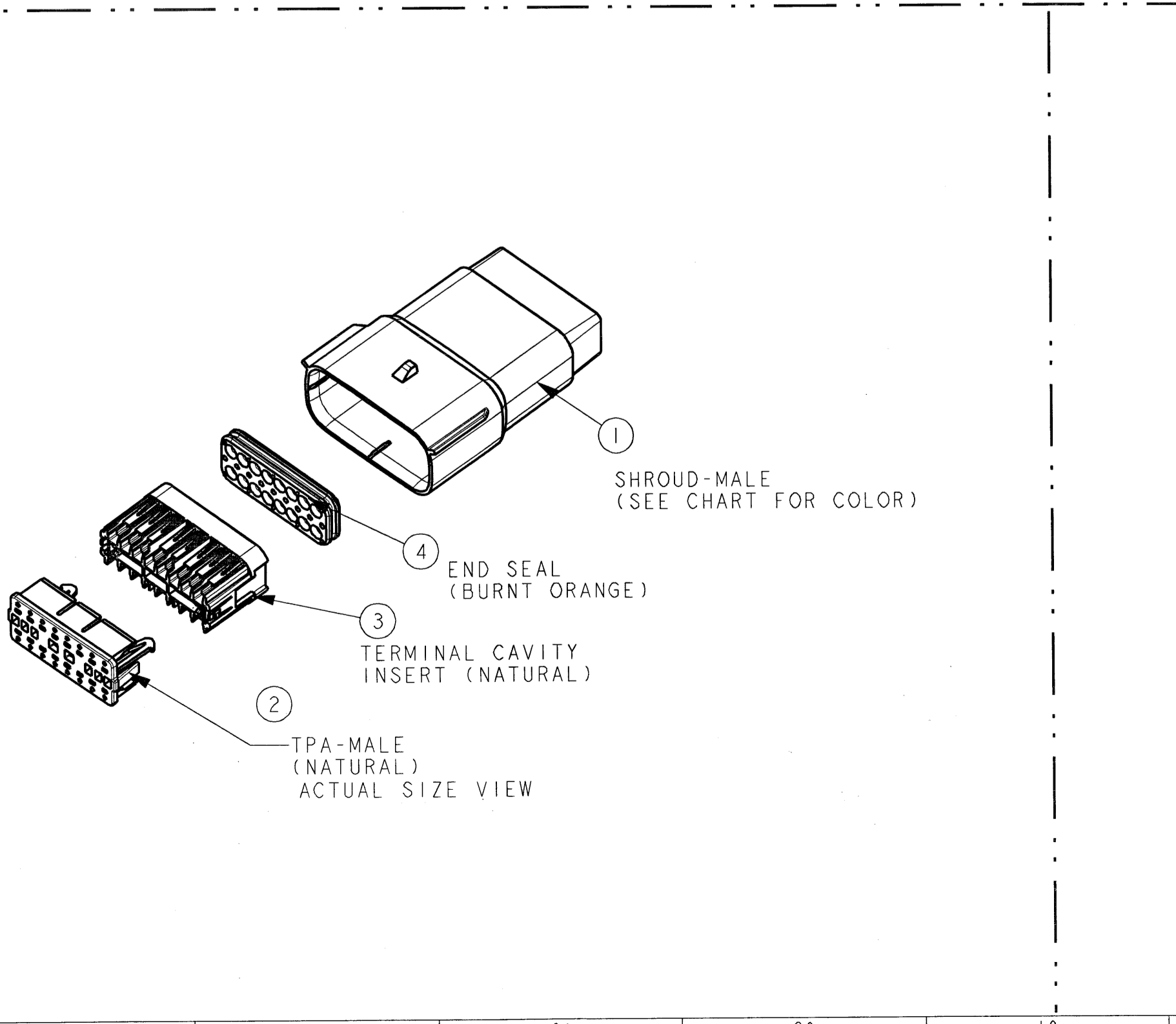
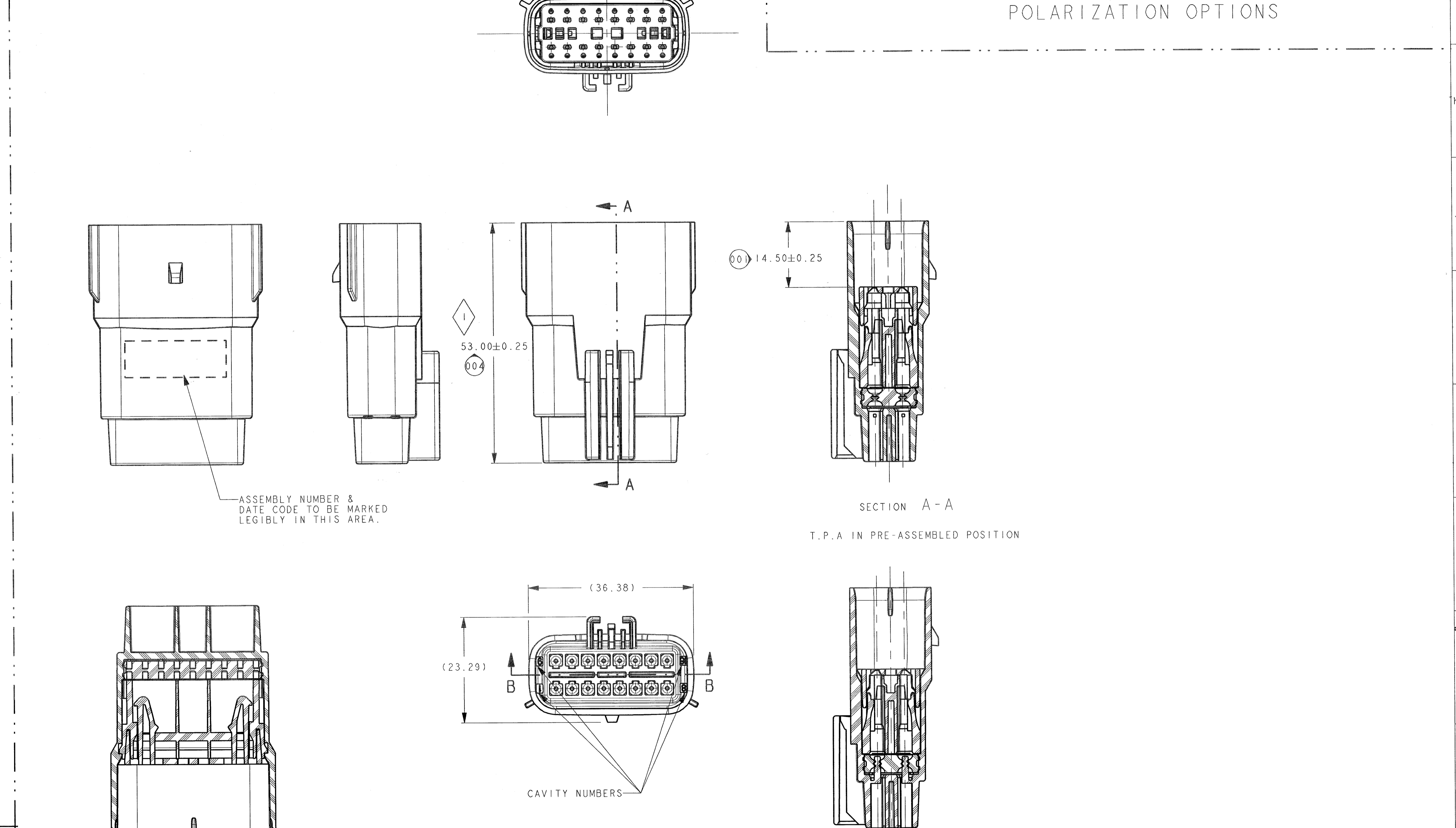
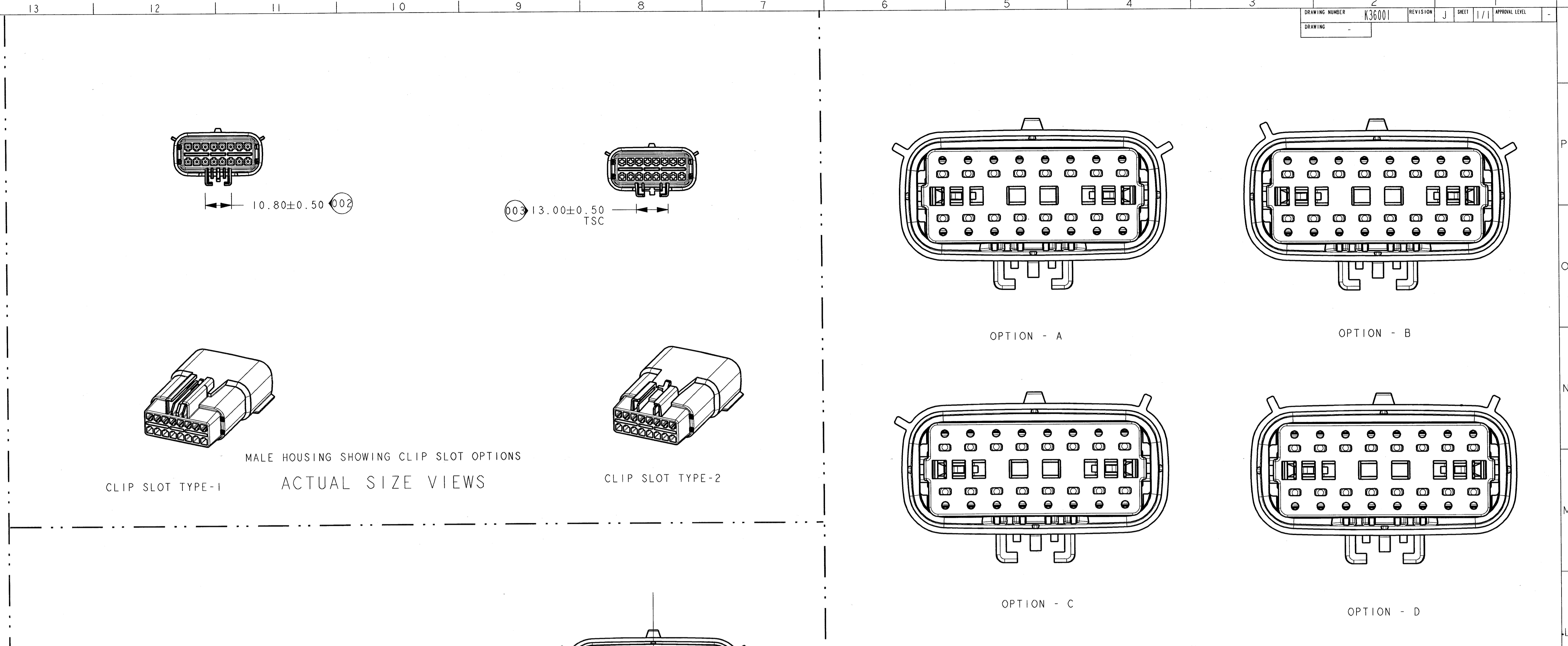


| Assembly Numbers | PCL | Key Option | Color | Slot | Components | | | Plugged (X) Seal Positions | | | | | | | | | | | | | | | | Total Circuits | Test Method | Mates With Assembly | |
|------------------|-----|------------|-------|------|------------|----------|----------|----------------------------|---|---|---|---|---|---|---|---|----|----|----|----|----|----|----------|----------------|-------------|---------------------|--|
| | | | | | TPA | TCI | Mat Seal | 1 | 2 | 3 | 4 | 5 | 6 | 7 | 8 | 9 | 10 | 11 | 12 | 13 | 14 | 15 | 16 | | | Reference Only | |
| 54241600 | C | A | Black | 1 | 54241658 | | | | | | | | | | | | | | | | | | | 54241630 | 54241630N | | |
| 54241601 | C | B | Grey | 1 | 54241659 | | | | | | | | | | | | | | | | | | | 54241631 | 54241631N | | |
| 54241602 | C | B | Brown | 1 | 54241660 | | | | | | | | | | | | | | | | | | | 54241632 | 54241632N | | |
| 54241603 | C | D | Green | 1 | 54241661 | | | | | | | | | | | | | | | | | | | 54241633 | 54241633N | | |
| 54241604 | C | A | Black | 2 | 54241662 | | | | | | | | | | | | | | | | | | 54241630 | 54241630N | | | |
| 54241605 | C | B | Grey | 2 | 54241663 | | | | | | | | | | | | | | | | | | 54241631 | 54241631N | | | |
| 54241606 | C | C | Brown | 2 | 54241664 | | | | | | | | | | | | | | | | | | 54241632 | 54241632N | | | |
| 54241607 | C | D | Green | 2 | 54241665 | | | | | | | | | | | | | | | | | | 54241633 | 54241633N | | | |
| 54241608 | C | A | Black | 1 | 54241650 | | | | | X | | | | | | | | | | | | | 54241634 | 54241634N | | | |
| 54241609 | C | B | Grey | 1 | 54241651 | | | | | X | | | | | | | | | | | | | 54241635 | 54241635N | | | |
| 54241610 | C | A | Black | 2 | 54241654 | | | | | X | | | | | | | | | | | | | 54241634 | 54241634N | | | |
| 54241611 | C | B | Grey | 2 | 54241655 | | | | | X | X | | | | | | | | | | | | 54241635 | 54241635N | | | |
| 54241612 | C | A | Black | 1 | 54241650 | | | | | X | X | | | | | | | | | | | | 54241636 | 54241636N | | | |
| 54241613 | C | B | Grey | 1 | 54241651 | | | | | X | X | | | | | | | | | | | | 54241637 | 54241637N | | | |
| 54241614 | C | A | Black | 2 | 54241654 | | | | | X | X | | | | | | | | | | | | 54241636 | 54241636N | | | |
| 54241615 | C | B | Grey | 2 | 54241655 | | | | | X | X | | | | | | | | | | | | 54241637 | 54241637N | | | |
| 54241616 | C | A | Black | 1 | 54241650 | | | | X | X | X | | | | | | | | | | | | 54241638 | 54241638N | | | |
| 54241617 | C | B | Grey | 1 | 54241651 | | | | X | X | X | | | | | | | | | | | | 54241639 | 54241639N | | | |
| 54241618 | C | A | Black | 2 | 54241654 | | | | X | X | X | | | | | | | | | | | | 54241638 | 54241638N | | | |
| 54241619 | C | B | Grey | 2 | 54241655 | | | | X | X | X | | | | | | | | | | | | 54241639 | 54241639N | | | |
| 54241620 | C | A | Black | 1 | 54241650 | 54241684 | 54241685 | 54241689 | | X | X | | | | | | | | | | | | 54241639 | 54241639N | | | |
| 54241621 | C | B | Grey | 1 | 54241651 | | | | | X | X | | | | | | | | | | | | 54241640 | 54241640N | | | |
| 54241622 | C | A | Black | 2 | 54241654 | | | | | X | X | | | | | | | | | | | | 54241641 | 54241641N | | | |
| 54241623 | C | B | Grey | 2 | 54241655 | | | | | X | X | | | | | | | | | | | | 54241640 | 54241640N | | | |
| 54241624 | F | | | | | | | | X | X | X | | | | | | | | | | | | 54241641 | 54241641N | | | |
| 54241625 | F | | | | | | | | X | | | | | | | | | | | | | | 54241642 | 54241642N | | | |
| 54241626 | F | | | | | | | | X | | | | | | | | | | | | | | 54241643 | 54241643N | | | |
| 54241627 | G | | | | | | | | X | | | | | | | | | | | | | | 54241644 | 54241644N | | | |
| 54241628 | G | | | | | | | | X | X | X | | | | | | | | | | | | | | | | |
| 55241606 | G | | | | | | | | X | X | X | X | | | | | | | | | | | | | | | |
| 55241607 | G | | | | | | | | X | X | X | | | | | | | | | | | | | | | | |
| 55241608 | G | | | | | | | | X | X | X | | | | | | | | | | | | | | | | |
| 55241609 | H | | | | | | | | X | X | X | X | | | | | | | | | | | | | | | |
| 55241610 | H | | | | | | | | X | X | X | X | | | | | | | | | | | | | | | |
| 55241611 | H | | | | | | | | X | X | X | X | | | | | | | | | | | | | | | |
| 55241612 | H | | | | | | | | X | X | X | X | | | | | | | | | | | | | | | |
| 55241613 | H | | | | | | | | X | X | X | X | | | | | | | | | | | | | | | |
| 55241614 | H | | | | | | | | X | X | X | X | | | | | | | | | | | | | | | |
| F845100 | A | | | | | | | | X | X | X | X | | | | | | | | | | | | | | | |
| F896100 | A | | | | | | | | X | X | X | X | | | | | | | | | | | | | | | |



| RECOMMENDED COMPONENTS | | | |
|------------------------|------------------------------|---------|-----------|
| FCI PART NUMBER | ITEM DESCRIPTION | PLATING | GRIP SIZE |
| 54001626 | APEX 150 TERMINAL | TIN | 16, 18 |
| 54002001 | APEX 150 TERMINAL | TIN | 20, 22 |
| 54001628 | APEX 150 TERMINAL | GOLD | 16, 18 |
| 54002003 | APEX 150 TERMINAL | GOLD | 20, 22 |
| 54241629 | APEX 150 UNIVERSAL SEAL PLUG | | |

- NOTES:
1) MAXIMUM TEMPERATURE CLASS: CLASS 3 (125°C)
2) TEST METHOD PER: SAE/USCAR-2 REV-4, SAE/USCAR-20 REV-2
3) CONNECTOR MAY BE USED WITH THE FOLLOWING RANGE OF WIRE SIZES/TYPES: - SIZE: 22 GAGE - 16 GAGE - 1.50mm MIN O.D. TO 2.41mm MAX O.D. - TYPE: TPL (MIL-123-A / MS-8288) - CONTACT FCI ENGINEERING REGARDING USE OF OTHER WIRE TYPES AND/OR SIZES
4) CONNECTOR MAY BE USED WITH THE FOLLOWING TERMINALS: - FCI APEX 150 WITH WIRE SIZES DEFINED IN NOTE 3. - SEE FCI DRAWING 454009 FOR SPECIFIC PART NUMBERS AND CRIMPING REQUIREMENTS. - CONTACT FCI ENGINEERING REGARDING USE OF COMPATIBLE NON FCI TERMINALS.
5) ANNUAL QUALITY REQUIREMENTS: IT IS PERMISSIBLE TO PERFORM CONTINUOUS CONFORMANCE PER FCI SPECIFICATION #AQA-001 INSTEAD OF ANNUAL LAYOUT AND ANNUAL PV REQUIREMENTS OF QS-9000 SECTION 2 AND SAE/USCAR-2 REV-4.
6) QUALITY ASSURANCE REQUIREMENTS SPC DATA, REQUIRED

| REV NUMBER | DATE | BY | REVISION | DESCRIPTION | CHK'D BY | APP'D BY |
|------------|----------|----|----------|---|----------|----------|
| 01069 | 02/14/08 | J | CHART | ADDED F845100 AND F896100 (AT PCL A) | RCB | RCB |
| 0005 | 11/12/07 | H | NOTES | REVISED NOTES 3 & 4 | RCB | RCB |
| 9913 | 10/01/07 | G | CHART | ADDED ASSEMBLIES 55241609 THRU 55241614 | RCB | RCB |
| 0485 | 07/10/07 | F | CHART | ADDED PART NUMBERS 54241621 - 54241628 | RCB | RCB |
| 0533 | 05/23/06 | E | F2 | REVISED DRAWING LAYOUT ADDED TPA COMP. DATA | FAH | FAH |
| 0228 | 12/12/05 | D | J15 | REVISED 'MARKED' NOTE | FAH | FAH |
| 7983 | 12/09/05 | C | J15 | REVISED 'MARKED' NOTE | FAH | FAH |
| 6534 | 03/15/04 | B | L18 | ADDED COLOR CALLOUT TO EXPLODED VIEW | FAH | FAH |
| 6512 | 04/16/04 | A | | RELEASED | FAH | FAH |

THIS DRAWING AND ALL OTHER INFORMATION CONTAINED HEREIN IS PROPRIETARY AND THE PROPERTY OF FCI. THIS DRAWING AND ALL OTHER INFORMATION CONTAINED HEREIN IS PROPRIETARY AND THE PROPERTY OF FCI. THIS DRAWING AND ALL OTHER INFORMATION CONTAINED HEREIN IS PROPRIETARY AND THE PROPERTY OF FCI.

DO NOT SCALE DRAWING
DATE: 10/22/07
DRAWN BY: BARRY E.
CHECKED BY: F. HOLLOM
REV. NO.: AM-032024
REV. NO.: 3
ITEM NAME: ASSEMBLY 16 WAY MALE
FILE NAME: K36001
SCALE: 2:1

Mouser Electronics

Authorized Distributor

Click to View Pricing, Inventory, Delivery & Lifecycle Information:

[Aptiv:](#)

[54241600](#) [54241601](#) [54241602](#) [54241602-B](#) [54241603-B](#) [54241603](#) [54241604](#) [54241612](#) [54241614](#) [54241601-B](#) [54241600-B](#) [54241627](#) [54241627-B](#) [54241604-B](#) [54241624](#)