

Router - PSI-MODEM-GSM/ETH - 2313355

Please be informed that the data shown in this PDF Document is generated from our Online Catalog. Please find the complete data in the user's documentation. Our General Terms of Use for Downloads are valid (<http://phoenixcontact.com/download>)



Industrial GSM router with GPRS/EDGE for mounting on EN DIN rail. GSM and GPRS/EDGE. 850 + 900 + 1800 + 1900 MHz. Ethernet interface. Firewall and VPN support. 6 alarm inputs and 4 switching outputs. 24 V DC supply voltage.

Product Features

- Configuration via web-based management
- Up to three VPN tunnels simultaneously
- Can be used worldwide
- Starting of VPN via call
- High electromagnetic compatibility
- Starting of VPN via SMS
- Authentication with X.509 certificates
- Firewall
- Encryption of SIM card PINs
- Autocrossing
- 10/100 Mbps automatic detection
- IPsec and OpenVPN support
- NAT table
- 6 digital switching inputs: for sending freely configurable text messages (SMS, FAX, e-mail) and starting user-defined functions
- Four switching outputs: can be activated via SMS and Ethernet and for GSM and connection diagnostics



Key Commercial Data

Packing unit	1 pc
Weight per Piece (excluding packing)	286.1 g
Custom tariff number	85176200
Country of origin	Germany

Router - PSI-MODEM-GSM/ETH - 2313355

Technical data

Note

Utilization restriction	EMC: class A product, see manufacturer's declaration in the download area
-------------------------	---

Dimensions

Width	35 mm
Height	99 mm
Depth	114.5 mm

Ambient conditions

Ambient temperature (operation)	-25 °C ... 60 °C
Ambient temperature (storage/transport)	-40 °C ... 75 °C
Permissible humidity (operation)	30 % ... 95 % (non-condensing)
Permissible humidity (storage/transport)	30 % ... 95 % (non-condensing)
Altitude	5000 m (For restrictions see manufacturer's declaration)
Degree of protection	IP20
Noise immunity	EN 61000-6-2:2005

General

Electrical isolation	VCC // GSM // Ethernet // PE
Test voltage data interface/data interface	500 V (50 Hz, 1 min.)
Test voltage data interface/power supply	500 V (50 Hz, 1 min.)
Electromagnetic compatibility	Conformance with R&TTE Directive 1999/5/EC (valid until June 12, 2016) or 2014/53/EU (valid from June 13, 2016)
Net weight	291 g
Housing material	PA 6.6-FR
Color	green
Conformance	CE-compliant
UL, USA / Canada	cULus listed UL 508

Power supply

Nominal supply voltage	24 V DC \pm 5 % (as an alternative or redundant, via backplane bus contact and system current supply)
Supply voltage range	10 V DC ... 30 V DC (via pluggable COMBICON screw terminal block)
Typical current consumption	< 360 mA (24 V DC)
	< 90 mA (stand by)

Serial interface

Interface 1	Ethernet interface, 10/100BASE-T(X) in acc. with IEEE 802.3u
Interface	Ethernet
Connection method	RJ45 socket, shielded

Router - PSI-MODEM-GSM/ETH - 2313355

Technical data

Serial interface

Transmission length	100 m (shielded twisted pair)
Protocols supported	TCP/IP, UDP/IP, FTP, HTTP
Auxiliary protocols	ARP, DHCP, PING (ICMP), SNMP V1, SMTP
Serial transmission speed	10/100 Mbps, auto negotiation

Radio interface

Interface description	GSM / GPRS / EDGE
Frequency	850 MHz (2 W (EGSM))
	900 MHz (2 W (EGSM))
	1800 MHz (1 W (EGSM))
	1900 MHz (1 W (EGSM))
Data rate	≤ 210 kbps (EDGE)
Antenna	50 Ω impedance SMA antenna socket
SIM interface 1	1.8 volt, 3 volt
GPRS	Class 12, Class B
	CS1 ... CS4
EDGE	Multislot Class 10
Network function	4 time slots for receiving data, 4 time slots for transmitting data. The PIN is saved in the modem. After a voltage interruption, there is automatic redialing into the network. Integrated TCP/IP stack, firewall and VPN support, independent connection establishment.
Network check	LED to show data signal quality

Function

Management	Web-based management, SNMP
------------	----------------------------

Digital outputs

Output name	Digital output
Number of outputs	4
Voltage output signal	10 V DC ... 30 V DC (depending on the operating voltage)
Current output signal	≤ 50 mA (Short-circuit-proof)

Digital inputs

Description of the input	Digital input
Number of inputs	6
Voltage input signal	10 V DC ... 30 V DC

Standards and Regulations

Electromagnetic compatibility	Conformance with R&TTE Directive 1999/5/EC (valid until June 12, 2016) or 2014/53/EU (valid from June 13, 2016)
Type of test	Free fall in acc. with IEC 60068-2-32

Router - PSI-MODEM-GSM/ETH - 2313355

Technical data

Standards and Regulations

Test result	1 m
Type of test	Vibration resistance in acc. with EN 60068-2-6/IEC 60068-2-6
Test result	5g, 150 Hz, 1.5 h, in XYZ direction
Type of test	Shock in acc. with EN 60068-2-27/IEC 60068-2-27
Test result	Operation: 15g, 11 ms period, half-sine shock pulse
Type of test	Shock in acc. with EN 60068-2-27/IEC 60068-2-27
Test result	Storage: 30g, 11 ms period, half-sine shock pulse
Noise immunity	EN 61000-6-2:2005
Standards/regulations	EN 61000-4-3
	EN 61000-4-4
	EN 61000-4-6
Conformance	CE-compliant
UL, USA / Canada	cULus listed UL 508

Classifications

eCl@ss

eCl@ss 4.0	27230207
eCl@ss 4.1	27230207
eCl@ss 5.0	27230207
eCl@ss 5.1	27230207
eCl@ss 6.0	27230207
eCl@ss 7.0	27230207
eCl@ss 8.0	19060590
eCl@ss 9.0	19060590

ETIM

ETIM 2.0	EC000310
ETIM 3.0	EC000310
ETIM 4.0	EC000740
ETIM 5.0	EC000740

UNSPSC

UNSPSC 6.01	30211506
UNSPSC 7.0901	39121008
UNSPSC 11	39121008
UNSPSC 12.01	39121008
UNSPSC 13.2	39121008

Router - PSI-MODEM-GSM/ETH - 2313355

Accessories

Accessories

Antenna

Antenna - PSI-GSM/UMTS-QB-ANT - 2313371



GSM UMTS antenna, with omnidirectional characteristic, 2 m antenna cable with SMA round connector

Antenna - TC ANT MOBILE WALL 5M - 2702273



Multiband mobile phone antenna with mounting bracket for outdoor installation. 5 m antenna cable with SMA round plug

Coaxial cable

Antenna cable - PSI-CAB-GSM/UMTS- 5M - 2900980



GSM/UMTS antenna cable, 5 m long; SMA (male) -> SMA (female), 50 Ohm impedance

Antenna cable - PSI-CAB-GSM/UMTS-10M - 2900981



GSM/UMTS antenna cable, 10 m long; SMA (male) -> SMA (female), 50 Ohm impedance

DIN rail connector

Router - PSI-MODEM-GSM/ETH - 2313355

Accessories

Electronic housing - ME 17,5 TBUS 1,5/ 5-ST-3,81 GN - 2709561



DIN rail connector for DIN rail mounting. Universal for TBUS housing. Gold-plated contacts, 5-pos.

Power supply

Power supply unit - MINI-SYS-PS-100-240AC/24DC/1.5 - 2866983



Primary-switched MINI POWER supply for DIN rail mounting, input: 1-phase, output: 24 V DC/1.5 A

Surge protection for transceiver systems

Surge protection device - CSMA-LAMBDA/4-2.0-BS-SET - 2800491

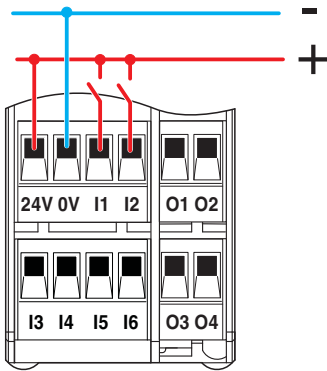


Attachment plug with Lambda/4 technology as surge protection for coaxial signal interfaces. Connection: Male/female SMA connectors.

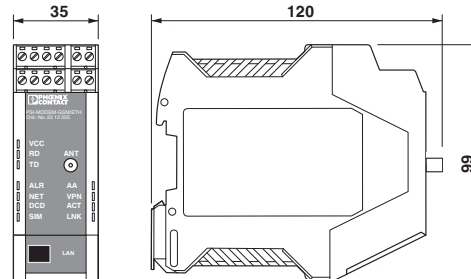
Drawings

Router - PSI-MODEM-GSM/ETH - 2313355

Connection diagram

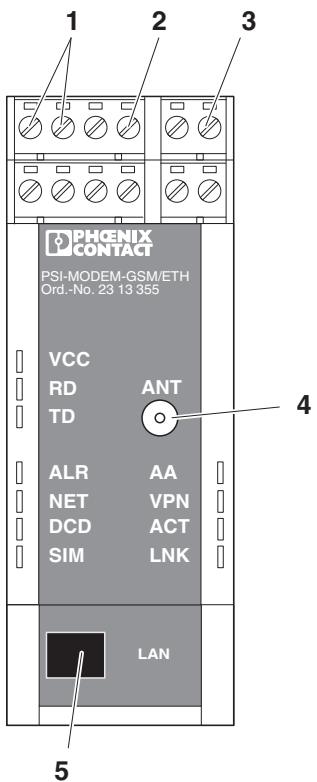


Dimensional drawing

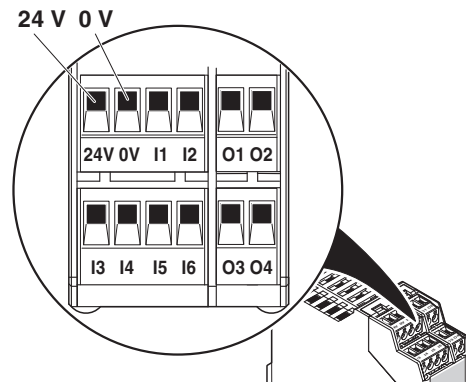


Switching inputs

Schematic diagram



Schematic diagram

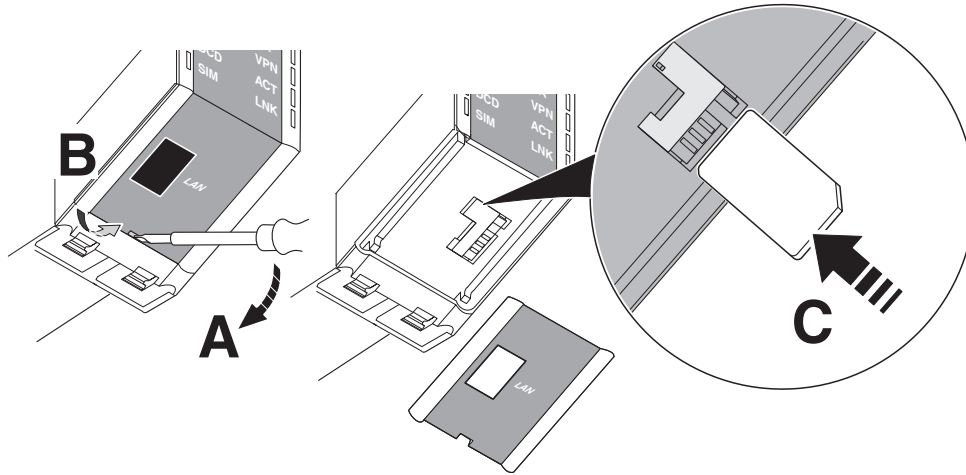


Device connections

Front view

Router - PSI-MODEM-GSM/ETH - 2313355

Schematic diagram



Insert the SIM card

Mouser Electronics

Authorized Distributor

Click to View Pricing, Inventory, Delivery & Lifecycle Information:

[Phoenix Contact:](#)

[2313355](#)