

RCE-01-G-02.00-BC

RCE, RCEF SERIES

IP68 SEALED ETHERNET PLUG

SPECIFICATIONS

For complete specifications
see www.samtec.com?RCE

Insulator Material:
Black Liquid Crystal Polymer
Contact:
Phosphor Bronze
Operating Temp Range:
-40 °C to +75 °C
Latch:
BeCu
Wire:
24 AWG

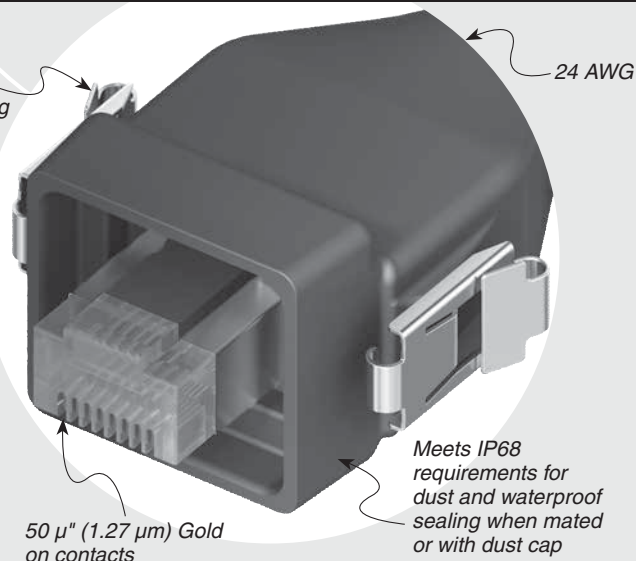
Mates with:
RPBE-01, RPCE



Solutionator
DESIGN IN A MINUTE

- Easy sealed cable solutions
- Build a standard or flexible custom online
- Calculate performance, current rating, voltage drop
- Live chat with AccliMate™ engineers for custom options
- Variety of shells, pin sizes, signal, power, I/O interfaces
- Assembly and field kits available

Audible click
positive latching



50 μm (1.27 μm) Gold
on contacts

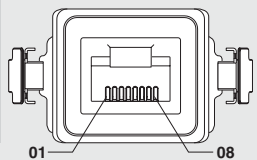
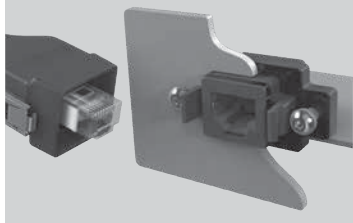
Meets IP68
requirements for
dust and waterproof
sealing when mated
or with dust cap

ALSO AVAILABLE (MOQ Required)

- Other wire lengths

RCE	CABLE STYLE	PLATING	WIRE LENGTH	END OPTION
	-01 = Outdoor UL	-G = 50 μm (1.27 μm) Gold on contact	-02.00 = (2 m) 78.74" -03.00 = (3 m) 118.11" -05.00 = (5 m) 196.85" Standard lengths	-D = Double End (Both ends sealed) -BC = Blunt Cut (One end sealed)

APPLICATION



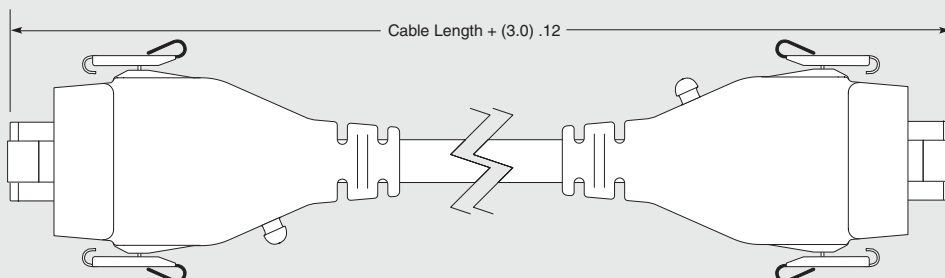
FIELD TERMINATION KIT

- Ethernet Field Termination Kit available for long cable run and small-opening applications so housings can be customer-installed after the runs are complete.
- RCEF-G-01 Series (For cable outside diameter range of 5.00-5.75 mm)
- RCEF-G-02 Series (For cable outside diameter range of 5.75-6.50 mm)

DUST CAPS

STYLE	RCE
-01	DCA-RCE-01-01

Note:
Meets IP68 requirements for
dust and waterproof sealing
when mated or with dust cap.



Due to technical progress, all designs, specifications and components are subject to change without notice.

WWW.SAMTEC.COM

All parts within this catalog are built to Samtec's specifications.
Customer specific requirements must be approved by Samtec and identified in a Samtec customer-specific drawing to apply.

Mouser Electronics

Authorized Distributor

Click to View Pricing, Inventory, Delivery & Lifecycle Information:

Samtec:

[RCE-01-G-02.00-BC](#) [RCE-01-G-02.00-D](#) [RCE-01-G-05.00-BC](#) [RCE-01-G-00.30-D](#) [RCE-01-G-02.10-BC](#) [RCE-01-G-04.00-BC](#) [RCE-01-G-01.50-BC](#) [RCE-01-G-20.00-BC](#) [RCE-01-G-03.00-BC](#) [RCE-01-G-03.00-D](#) [RCE-01-G-00.60-D](#) [RCE-01-G-10.00-D](#) [RCE-01-G-00.50-BC](#) [RCE-01-G-00.37-D](#) [RCE-01-G-01.00-D](#) [RCE-01-G-00.25-BC](#) [RCE-01-G-00.25-D](#) [RCE-01-G-02.50-D](#) [RCE-01-G-20.00-D](#) [RCE-01-G-25.00-D](#) [RCE-01-G-01.00-BC](#) [RCE-01-G-05.00-D](#) [RCE-01-G-08.00-BC](#) [RCE-01-G-30.00-D](#) [RCE-01-G-30.50-BC](#) [RCE-01-G-40.00-D](#) [RCE-01-G-01.83-D](#) [RCE-01-G-15.00-BC](#) [RCE-01-G-00.50-D](#) [RCE-01-G-00.94-D](#) [RCE-01-G-09.15-D](#) [RCE-01-G-10.00-BC](#) [RCE-01-G-12.00-BC](#) [RCE-01-G-13.00-D](#) [RCE-01-G-06.00-BC](#) [RCE-01-G-04.00-D](#) [RCE-01-G-25.00-BC](#)