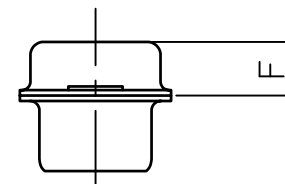
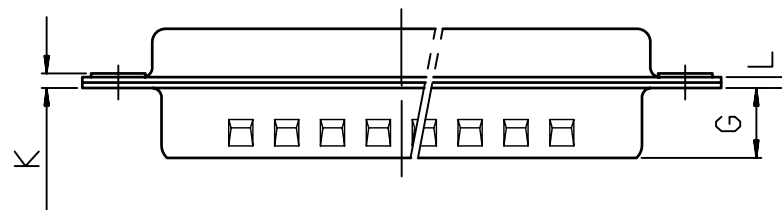
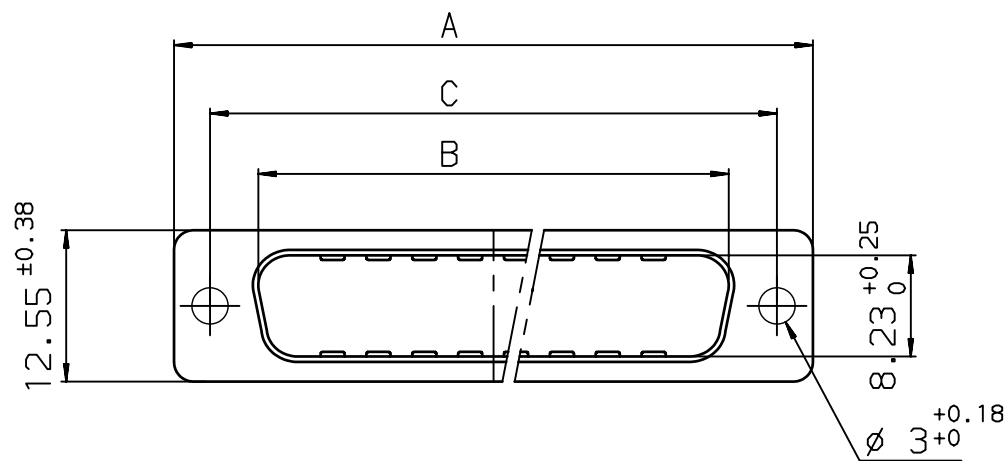


1

2

3

4




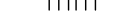

0 5 10 MM

Shell size	Number of contacts	A ^{+0.76} ₀	B ^{+0.25} ₀	C ^{±0.12}	F ^{+0.13} _{-0.03}	G	K	L ^{+0.22} ₀	Part number
E	09	30.43	16.79	24.99	4.36	5.90 ^{+0.15} ₀	1.00 ^{+0.30} ₀	0.80	8655-3138
A	15	38.76	25.12	33.32	4.36	5.90 ^{+0.15} ₀	1.00 ^{+0.30} ₀	0.80	8655-3139
B	25	52.65	38.84	47.04	4.36	5.70 ^{+0.25} ₀	1.00 ^{+0.30} ₀	0.80	8655-3140
C	37	68.94	55.30	63.50	4.36	5.70 ^{+0.25} ₀	1.27 ^{+0.30} ₀	1.00	8655-3141

PLATING

Yellow Chromate Cadmium 12μ over flash Nickel

rev	ecn no	dr	date
C	-	BOU	1999/10/06
D	LS06-0097	LGO	2006/07/28
E	LS09-0006	PCR	2009/01/08
-	-	-	-
-	-	-	-
-	-	-	-

www.fciconnect.com			surface ISO 1302		tolerance std ISO 406 ISO 1101		projection 		 mm		
			TOLERANCES UNLESS OTHERWISE SPECIFIED								
Dr	BOUITIER	1994/05/27	ANGULAR	LINEAR	0.X	±0.1	size A3	Scale 3			
Eng	PESSON	1994/05/27			0.XX	±0.1					
Chr	LEGARE	1994/05/27			0.XXX	±0.1		ECN LS09-0006			
Appr	LEGARE	1994/05/27	Product family				D-SUB	Spec ref -			
			title PINS METAL CAPS D SUB ACCESSORIES				dwg no C01-8655-0651			Rev. E	
catalog no			-				CUSTOMER		sheet 1 of 1		

REV F - 2006-04-17

1

2

3

4

Mouser Electronics

Authorized Distributor

Click to View Pricing, Inventory, Delivery & Lifecycle Information:

[FCI / Amphenol:](#)

[86553141TLF](#) [86553139](#) [86553140](#)