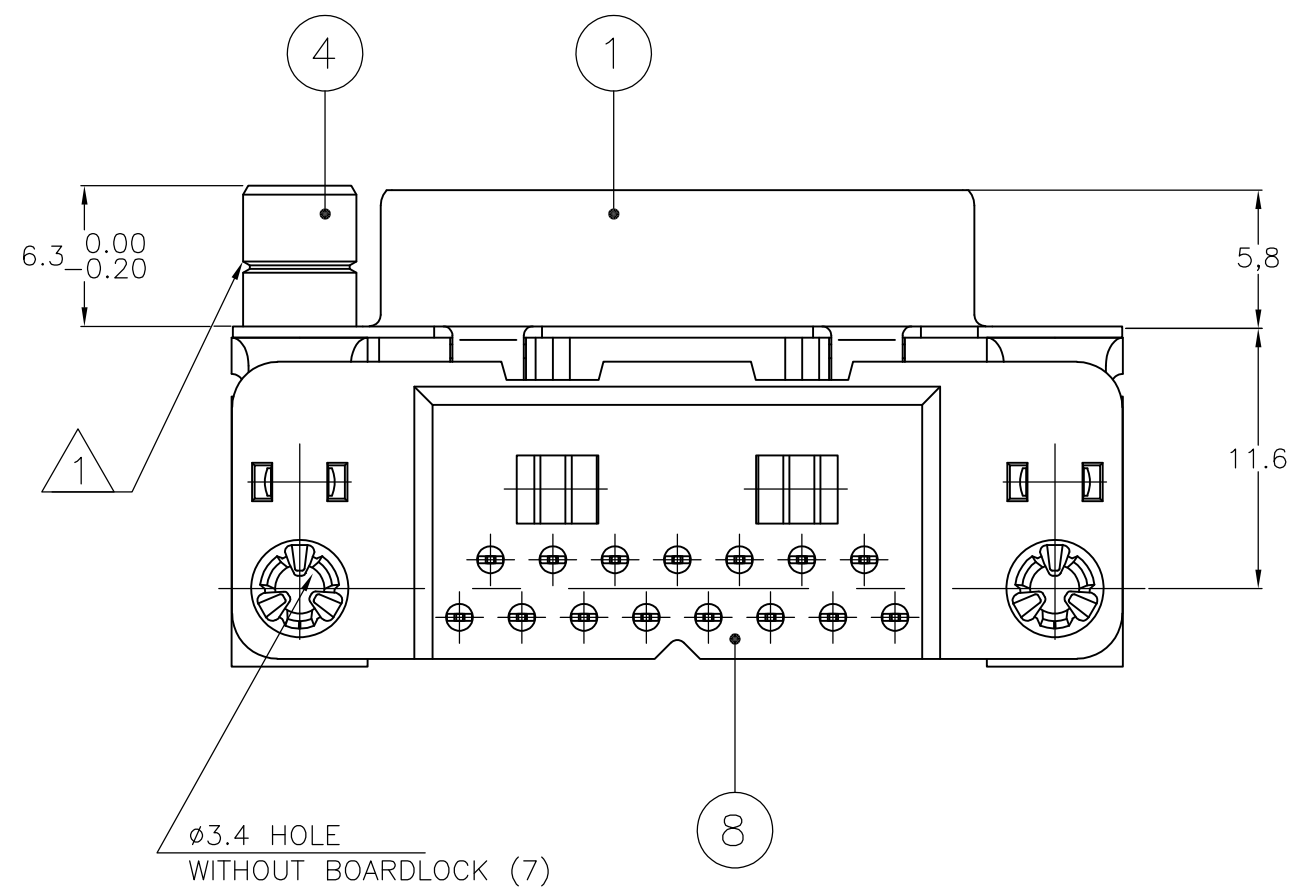
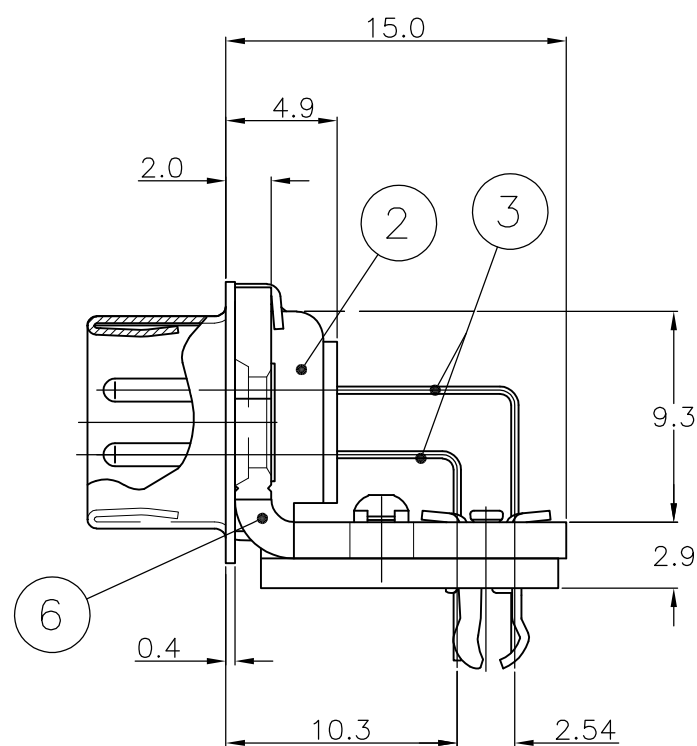
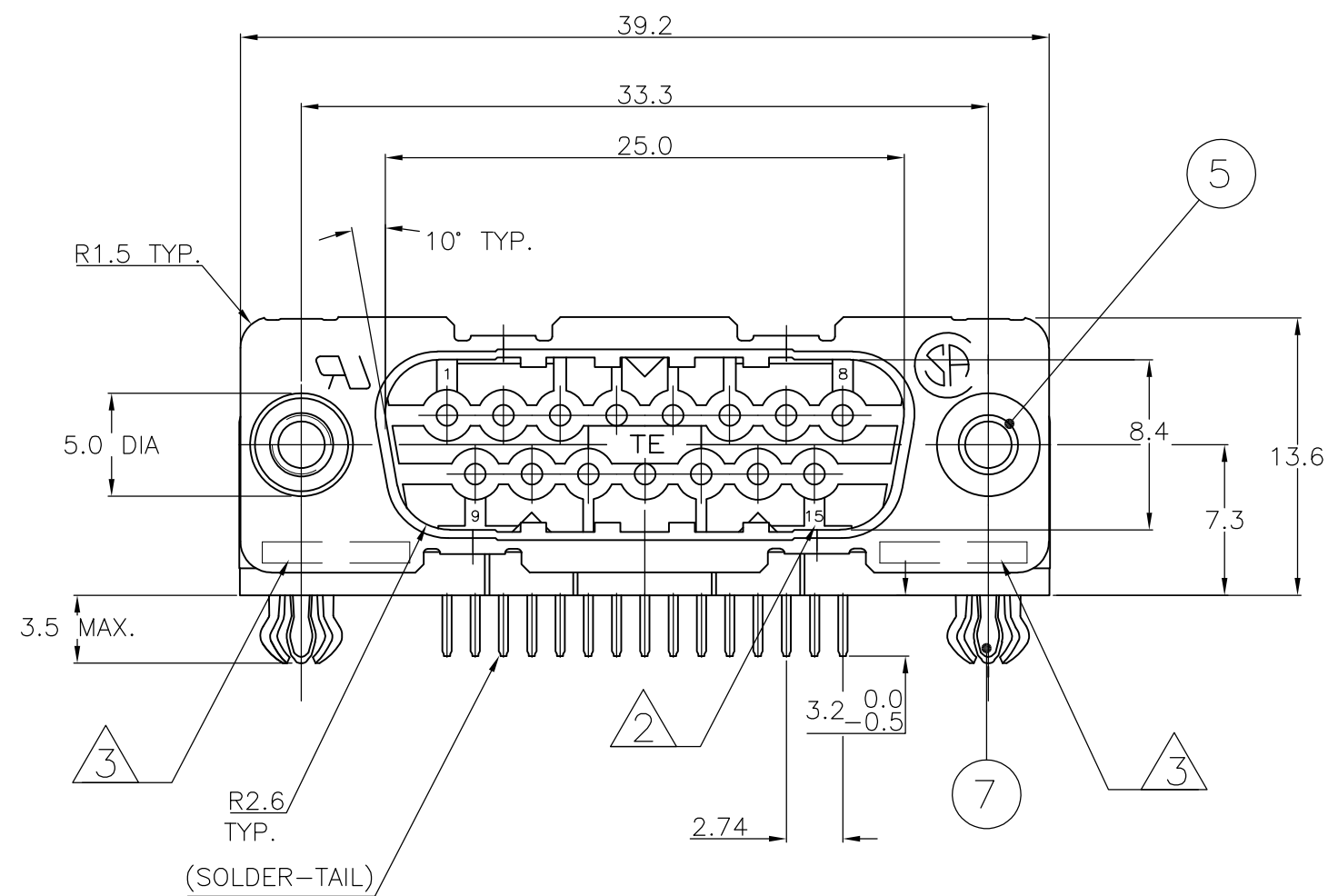
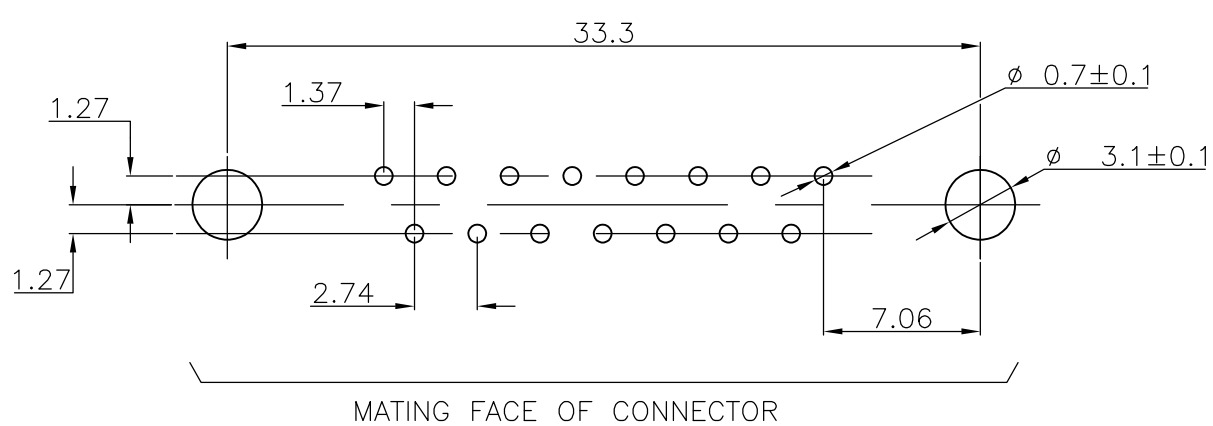


LOC	DIST	REVISIONS					
GP	00	P	LTR	DESCRIPTION	DATE	DWN	APVD
			L	REVISED PER ECO-15-004948	27APR2015	AP	SB




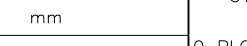
## RECOMMENDED P.C. BOARD HOLE-LAYOUT

[illegible]

1. GROOVE INDICATES VERSION WITH 4–40 UNC INNER THREAD; WITHOUT GROOVE INDICATES VERSION WITH M3 INNER THREAD.
  2. CAVITY IDENTIFICATION AT FRONT SIDE ONLY.
  3. PART NUMBER AND DATE CODE.
4. SHELL HAS 2x4 GROUNDING SPRINGS; PITCH IS 3.6.
  5. AIR AND CREEPAGE DISTANCES ACCORDING TO DIN 41652.
  6. GOLD FLASH OVER PALLADIUM–NICKEL PLATE OR GOLD PLATE ON THE MATING SURFACES, TIN PLATE ON THE SOLDER–TAILS, NICKEL UNDERPLATE ON THE ENTIRE CONTACT. MATING SURFACE FINISH MEETS PERFORMANCE LEVEL 2 PER DIN 41652.

## ITEM NO/MATERIAL :

- |                               |   |
|-------------------------------|---|
| ① SHELL                       | : BRIGHT TIN PLATED STEEL   |
| ② HOUSING                     | : GLASS FILLED POLYESTER,<br>COLOR : BLACK                                  |
| ③ CONTACTS                    | : PHOSPHOR BRONZE<br>(PLATING : SEE NOTES)                                  |
| ④ FEMALE SCREWLOCK            | : TIN PLATED STEEL<br>(INNER THREAD 4-40 UNC OR M3)                         |
| ⑤ INSERT                      | : TIN PLATED STEEL (INNER THREAD 4-40<br>UNC OR M3 OR $\phi 3.1$ THRU-HOLE) |
| ⑥ BRACKET                     | : TIN PLATED STEEL  |
| ⑦ BOARDLOCK                   | : TIN PLATED PHOSPHOR BRONZE  |
| ⑧ SOLDER-TAIL ALIGNMENT PLATE | : GLASS FILLED NYLON.<br>COLOR : BLACK                                      |

THIS DRAWING IS A CONTROLLED DOCUMENT. DIMENSIONING AND TOLERANCING PER ASME Y14.5M-2009		DWN D. KESSLER CHK W. SOOMERS APVD		18JAN99				TE Connectivity	
DIMENSIONS: mm		TOLERANCES UNLESS OTHERWISE SPECIFIED:		NAME		HD-20 SIZE 2 RIGHT ANGLE PLUG HEADER; MARK II+			
		0 PLC ± - 1 PLC ± - 2 PLC ± - 3 PLC ± - 4 PLC ± - ANGLES ± ± -		PRODUCT SPEC -		-			
MATERIAL		FINISH		APPLICATION SPEC -		SIZE	CAGE CODE	DRAWING NO	RESTRICTED TO
-		-		WEIGHT -		A2	00779	C-338169	-
CUSTOMER DRAWING								SCALE	N.TS
								SHEET	1 of 1
								REV	1

# Mouser Electronics

Authorized Distributor

Click to View Pricing, Inventory, Delivery & Lifecycle Information:

[TE Connectivity:](#)

[6-338169-2](#)