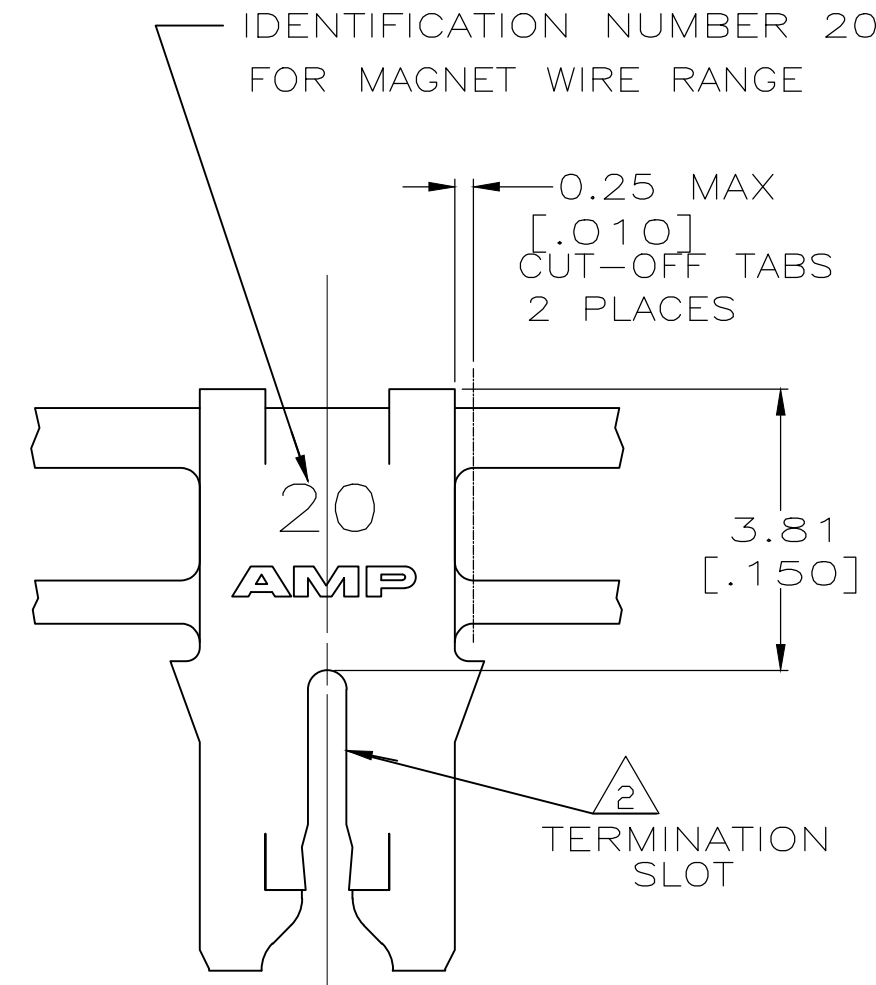
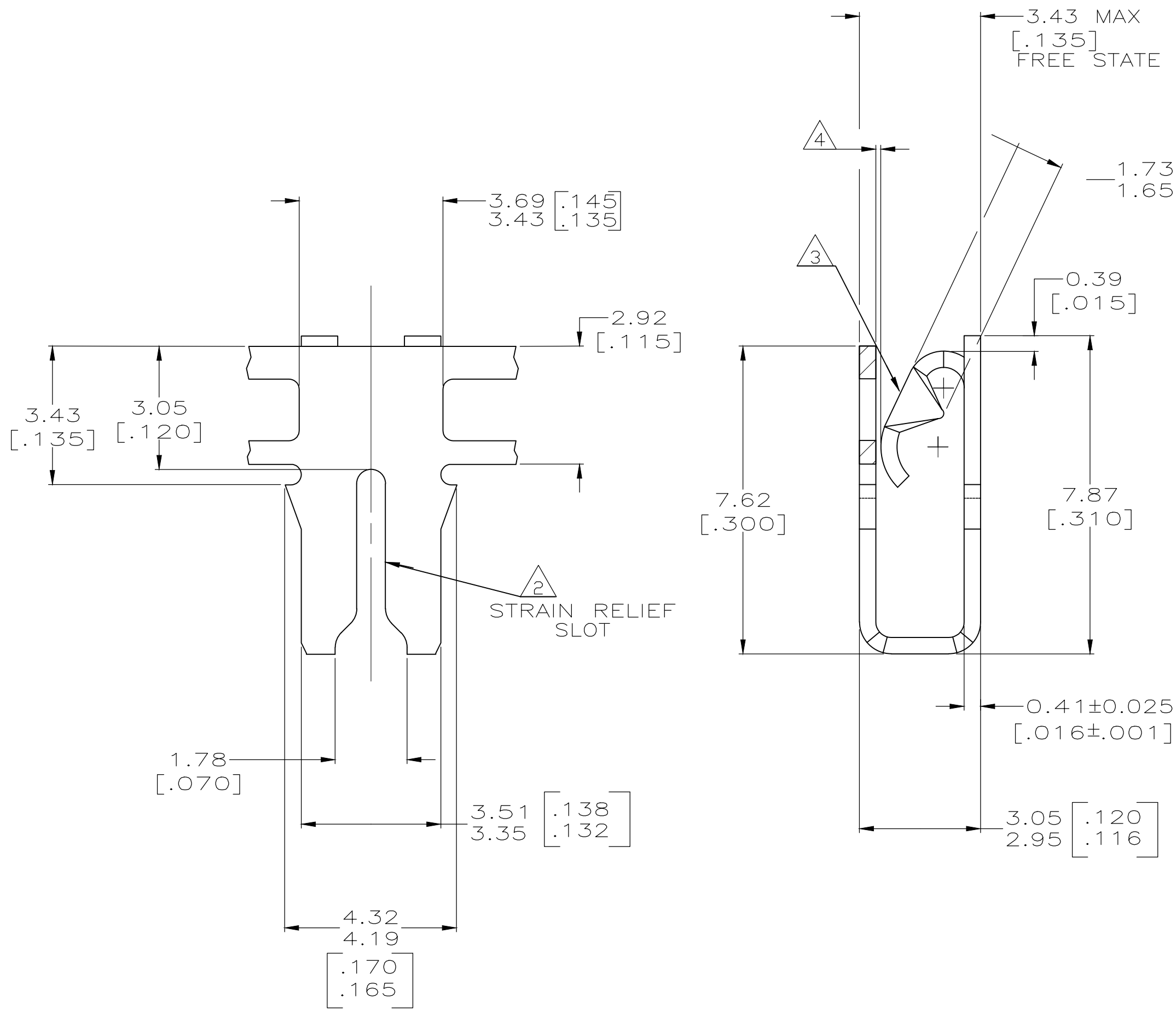
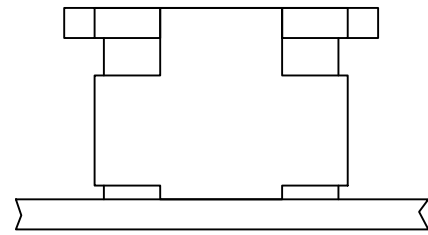


THIS DRAWING IS UNPUBLISHED. RELEASED FOR PUBLICATION
 © COPYRIGHT - By - ALL RIGHTS RESERVED.

LOC	DIST	REVISIONS			
P	LTR	DESCRIPTION	DATE	DWN	APVD
AF	50	C	REVISED PER ECR-18-009392	28MAR2019	BDA SV

- 1 CONTINUOUS STRIP ON REELS WITH TERMINALS LOCATED ON 5.59±0.08 [.220±.003] CENTERS
- 2 SLOT ACCEPTS A 0.68-0.81mm [#21.5-#20] AWG COPPER MAGNET WIRE.
- 3 MATES WITH STANDARD MAG-MATE STYLED POKE-IN TAB TERMINAL.
- 4 WHEN FREE STATE IS COMPRESSED TO 3.23 [.127] DIMENSION GAP BETWEEN SPRING AND CARRIER IS TO BE 0.30 [.012] MAX.
- 5 0.0010 [.000040] MIN TIN
- 6 ANTI-FRETTING LUBRICANT APPLIED.
- 7 0.00382 [.000150] MIN SILVER PLATE OVER 0.00127 [.000050] MIN NICKEL UNDERPLATE.
- 8 PRELIMINARY - NOT FOR PRODUCTION.



FINISH	MATERIAL	PART NUMBER
7	4M BRASS	8 1217688-4
5 6	H04 PHOSPHOR BRONZE	8 1217688-3
5 6	4M BRASS	8 1217688-2
5	4M BRASS	1217688-1

THIS DRAWING IS A CONTROLLED DOCUMENT.

DWN	120CT2001	MICHAEL S. FEHER	 TE Connectivity
CHK	170CT2001	KURT A. RANDOLPH	
APVD	170CT2001	KURT A. RANDOLPH	
PRODUCT SPEC	108-2012		
APPLICATION SPEC	114-2046		NAME
MATERIAL	SEE TABLE	FINISH	SEE TABLE
WEIGHT	-	SCALE	10:1
CUSTOMER DRAWING		SHEET	1 OF 1
		REV	C

DIMENSIONS: INCHES
 TOLERANCES UNLESS OTHERWISE SPECIFIED:
 0 PLC ± -
 1 PLC ± -
 2 PLC ± 0.25 [.010]
 3 PLC ± -
 4 PLC ± -
 ANGLES ± -

SPECIAL LEAF CONTACT, 300 SERIES MAG-MATE™
 SIZE: A2 CAGE CODE: 00779 DRAWING NO: 1217688 RESTRICTED TO: -
 SCALE: 10:1 SHEET: 1 OF 1 REV: C