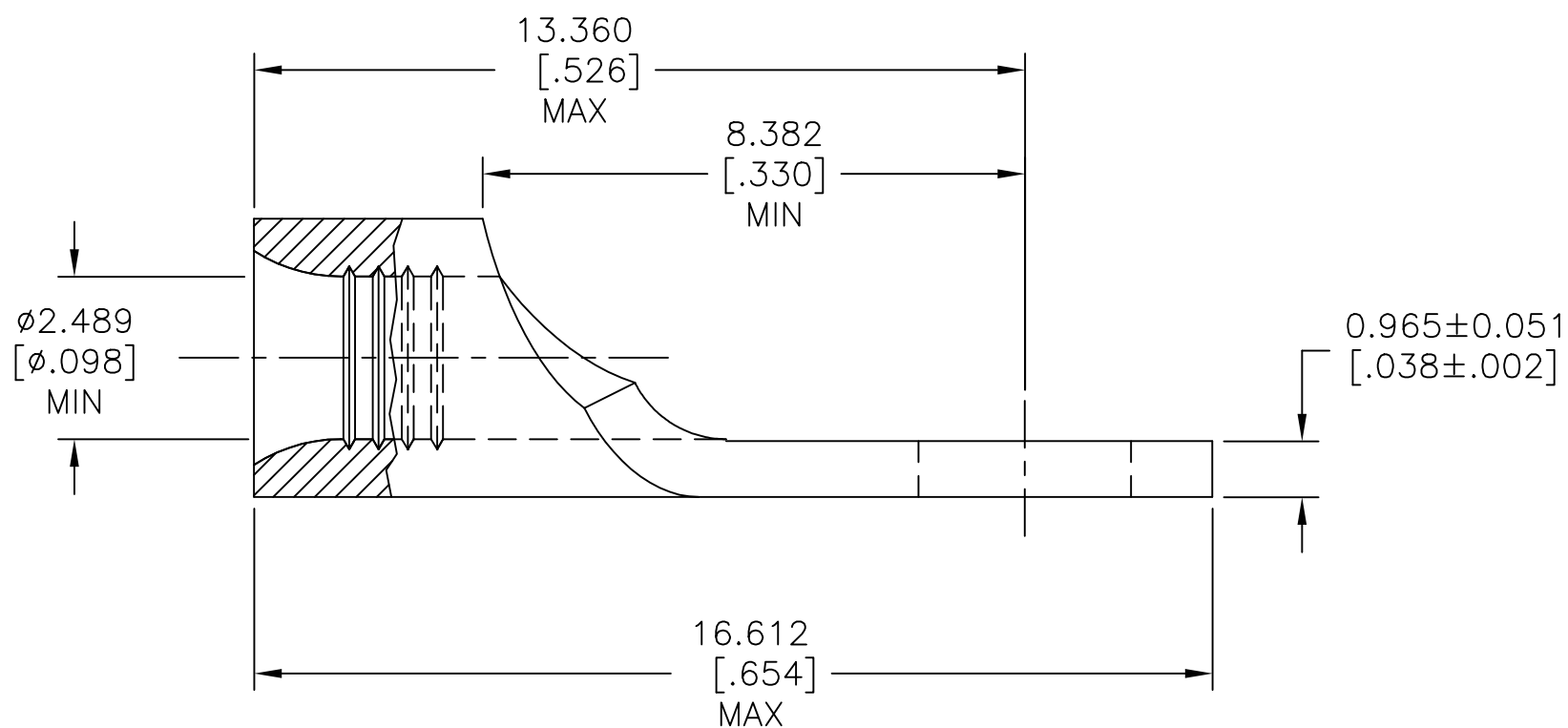


1 STAMP AMP 14-12* APPROX AS SHOWN



5000	TAPE MOUNTED, REEL	2-35684-1
500	LOOSE PIECE	35684
QTY	PACKAGE TYPE	AMP PART NUMBER

AMP INCORPORATED
CUSTOMER SERVICE SYSTEMS

THIS DRAWING IS A CONTROLLED DOCUMENT.

DWN	26MAR97
DK SCHULM	

CHK	27MAR97
-----	---------

MJ SPICER	
APVD	27MAR97

JL MECKLEY
PRODUCT SPEC

III 486 A-B

OL 400 A-D

APPLICATION SPEC

—

WEIGHT	
--------	--

CUSTOMER DRAWING

CUSTOMER DRAWING

TE TE Connectivity Ltd.

NAME	TERMINAL, RING TONGUE, SOLISTRAND, TM 14-12 AWG
------	---

SIZE	CAGE CODE	DRAWING NO	RESTRICTED TO
------	-----------	------------	---------------

$\Lambda 300779$	$C=35684$	—
------------------	-----------	---

AS	00775	00001	
	SCALE	SHEET	REV

	8:1	1 OF 1	REV D1
--	-----	--------	--------

FOR ADDITIONAL
PRODUCT INFORMATION OR
COPIES OF DRAWINGS
AND TECHNICAL DOCUMENTS

PRODUCT INFORMATION CENTER
1-800-522-6752

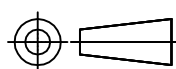
MAX RECOMMENDED OPERATING
TEMPERATURE:
170°C [338°F] MAX

VOLTAGE RATING:

NOT APPLICABLE

WIRE CROSS SECTIONAL AREA RANGE,
1.65-4.17mm²[3,260-8,230] CIR MILS
SOLID OR STRANDED

DIMENSIONS:
mm [INCHES]



TOLERANCES UNLESS
OTHERWISE SPECIFIED:

0 PLC	$\pm -$
1 PLC	$\pm -$
2 PLC	$\pm -$
3 PLC	$\pm 0.127[.005]$
4 PLC	$\pm -$
ANGLES	$\pm -$

FINISH

0.00254 [NO PLATE] MIN
TUL. DEP. ASTM D515

	THK PER ASTM B545
--	-------------------

1470-19 (1/15)

Mouser Electronics

Authorized Distributor

Click to View Pricing, Inventory, Delivery & Lifecycle Information:

[TE Connectivity:](#)

[8-35684-2](#)