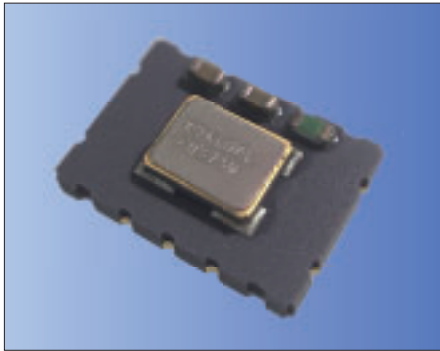


7.0×5.0mm



RoHS Compliant

Features

- High stability and high reliability
- 2.7 to 5.5V drive available
- Clipped sine wave or CMOS level output
- Low phase noise
- Disable Function (KT7050A)

Applications

- 5G, Smallcell, Stratum3
- SONE/ SDH/ Ethernet

How to Order

KT7050 □ 20000 □ A □ 33 T xx
 ① ② ③ ④ ⑤ ⑥ ⑦ ⑧ ⑨

- ① Series
- ② Land Type
- ③ Output Frequency
- ④ Freq. Temp. Chrst.
- ⑤ Lower Operating Temp.
- ⑥ Upper Operating Temp.

	④	⑤	⑥
KAW	±0.28×10 ⁻⁶	-40°C	+85°C
KAY	±0.28×10 ⁻⁶	-40°C	+105°C
AAV	±0.10×10 ⁻⁶	-40°C	+105°C

⑦ Supply Voltage	⑧ Voltage Control Function
33	T
3.3V	TCXO
	Spec. Code*
	VCTCXO

*Please contact us for Spec. Code.

- ⑨ Individual Specification

Packaging (Tape & Reel 1000 pcs./ reel)

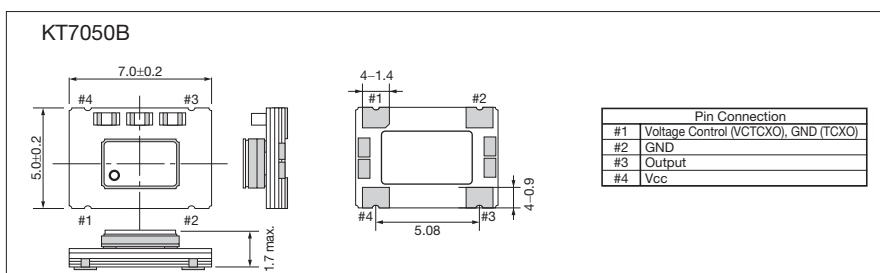
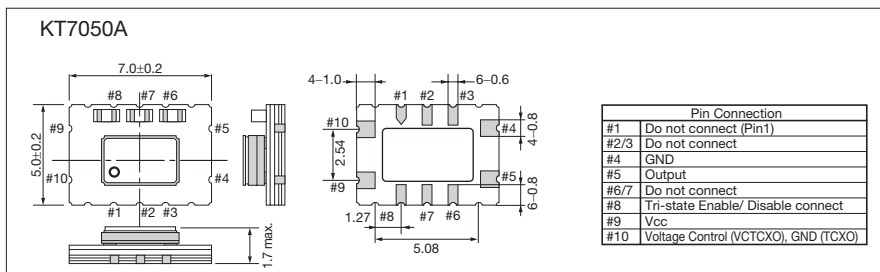
- Compliant to the GR1244-Core & GR253-Core
- Recommended in Microsemi's ZLAN-68 app. note for Stratum3 applications based on tests performed by Kyocera.

Specifications

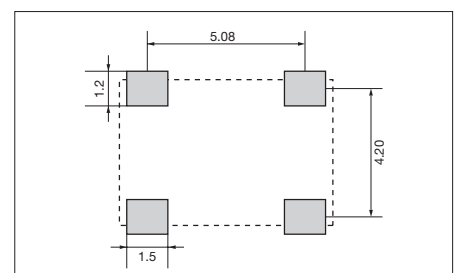
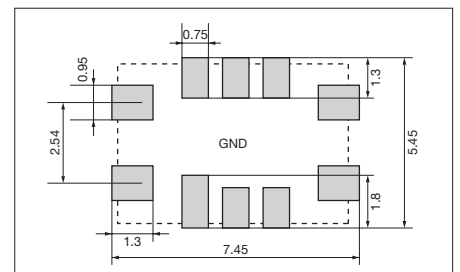
Item	Symbol	Conditions	Min.	Max.	Units	
Output Frequency Range	fo	Standard Frequency: 10, 19.2, 20, 24.576, 26, 30.72, 38.88, 40 vs Temperature (-10 to +105°C) [±(fmax-fmin)/ 2fo]	10	40	MHz	
Frequency Tolerance	f _{tol}	vs Temperature (-40 to +85°C/ +105°C) [±(fmax-fmin)/ 2fo] vs Voltage	-0.1	+0.1	×10 ⁻⁶	
			-0.1	+0.1		
Supply Voltage	V _{CC}		+2.7	+5.5	V	
Current Consumption	I _{CC}	CMOS Output	—	6	mA	
Frequency Aging	f _{age}	20years aging @40°C Including temp characteristics, initial tolerance, rated power supply voltage change and load change.	-4.6	+4.6	×10 ⁻⁶	
Voltage Control Range	f _{cont}	Positive *100k ohm min	±5	±20	×10 ⁻⁶	
Output Level	V _{pp}	Clipped Sine, Load: 10k ohm // 10pF	0.8	—	Vp-p	
Low Level Output Voltage	V _{OL}	CMOS, Load: 15pF I _{OL} = 4mA	—	10% V _{CC}	V	
High Level Output Voltage	V _{OH}	CMOS, Load: 15pF I _{OH} = -4mA	90% V _{CC}	—	V	
Rise / Fall Time (10%V_{CC} to 90%V_{CC})	tr/ tf	CMOS, Load: 15pF	—	8	ns	
Symmetry	SYM	50% V _{CC}	45	55	%	
Phase Noise	—	@20MHz	@10Hz offset	—	-90	dBc/ Hz
			@100Hz offset	—	-120	
			@1kHz offset	—	-140	
			@10kHz offset	—	-150	
			@100kHz offset	—	-150	

* Please contact us for other specifications.

Dimensions



Recommended Land Pattern (Unit: mm)



Mouser Electronics

Authorized Distributor

Click to View Pricing, Inventory, Delivery & Lifecycle Information:

Kyocera:

[KT7050A20000KAW33TAD](#) [KT7050A24576KAW33TAD](#) [KT2520K26000CCW18ZUS](#) [KT2520K26000DCW28QAS](#)
[KT2520K26000ZAW18TAS](#) [KT2016K26000BCW18ZAS](#) [KT2520K26000ACW18TAS](#) [KT2520K40000DAW18TAS](#)
[KT2520K26000AAW18TAS](#) [KT7050B12800KAW33TAD](#) [KT5032F12800KAW33TAA](#) [KT2016K38400AAW18ZCS](#)
[KT2520K26000ZAW23ZMS](#) [KT2520K26000ZAW28QAS](#) [KT2016K38400ACW18TAS](#) [KT2016K26000ZAW18TAS](#)
[KT2016K26000ACW18TAS](#) [KT2016K26000ZAW23ZMS](#) [KT2520K25000ZAW18TDS](#) [KT2016K40000DAZ18TAV](#)
[KT2016K27600ZAW18TCS](#) [KT1612A26000AAW19NAS](#) [KT1612A26000AAW19TBT](#)