

LOC	DIST	REVISIONS					
GP	00	P	LTR	DESCRIPTION	DATE	DWN	APVD
			J	REVISED PER ECO-07-004221	30MAR07	JDP	EDB

D

D

C

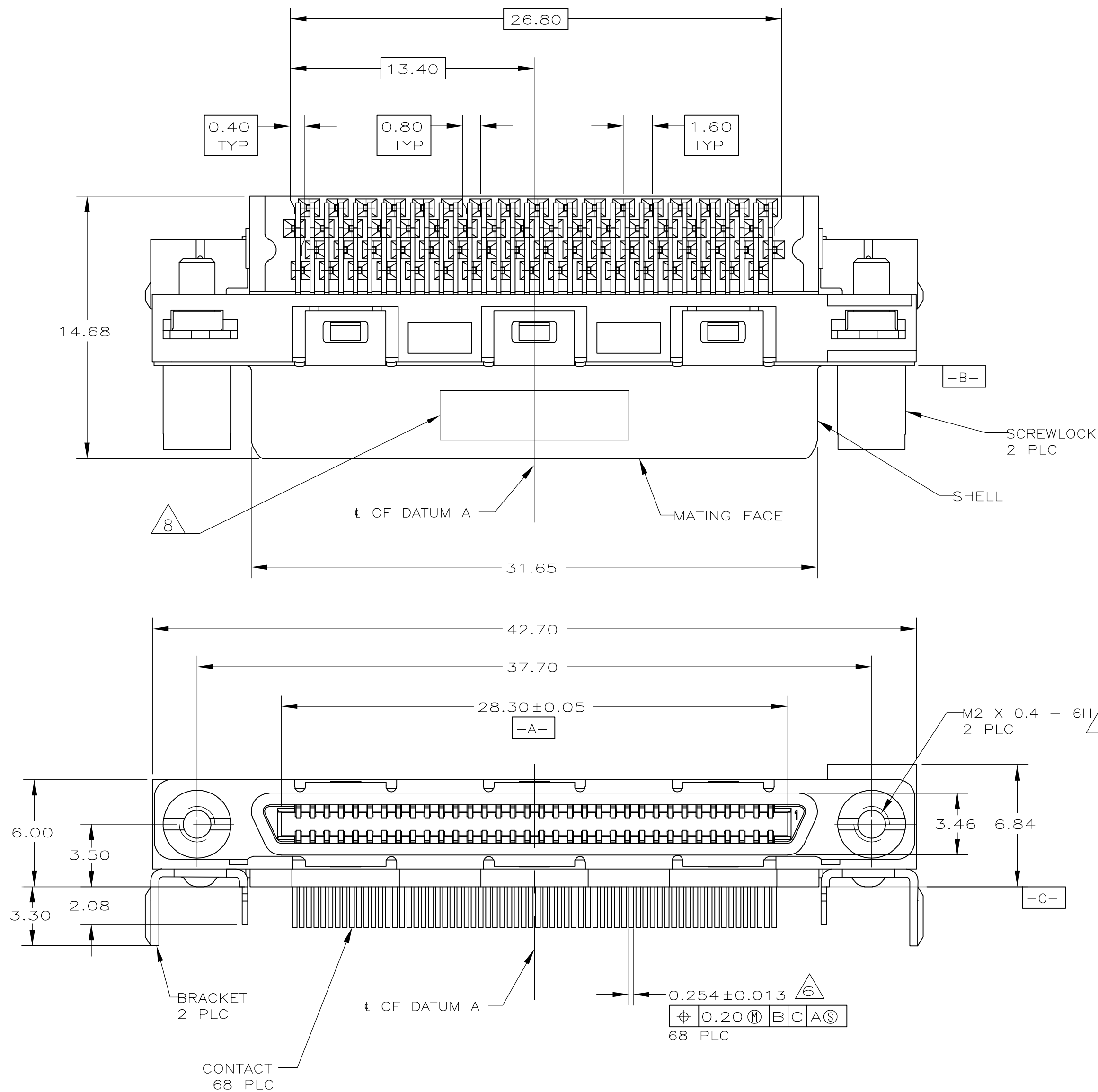
C

B

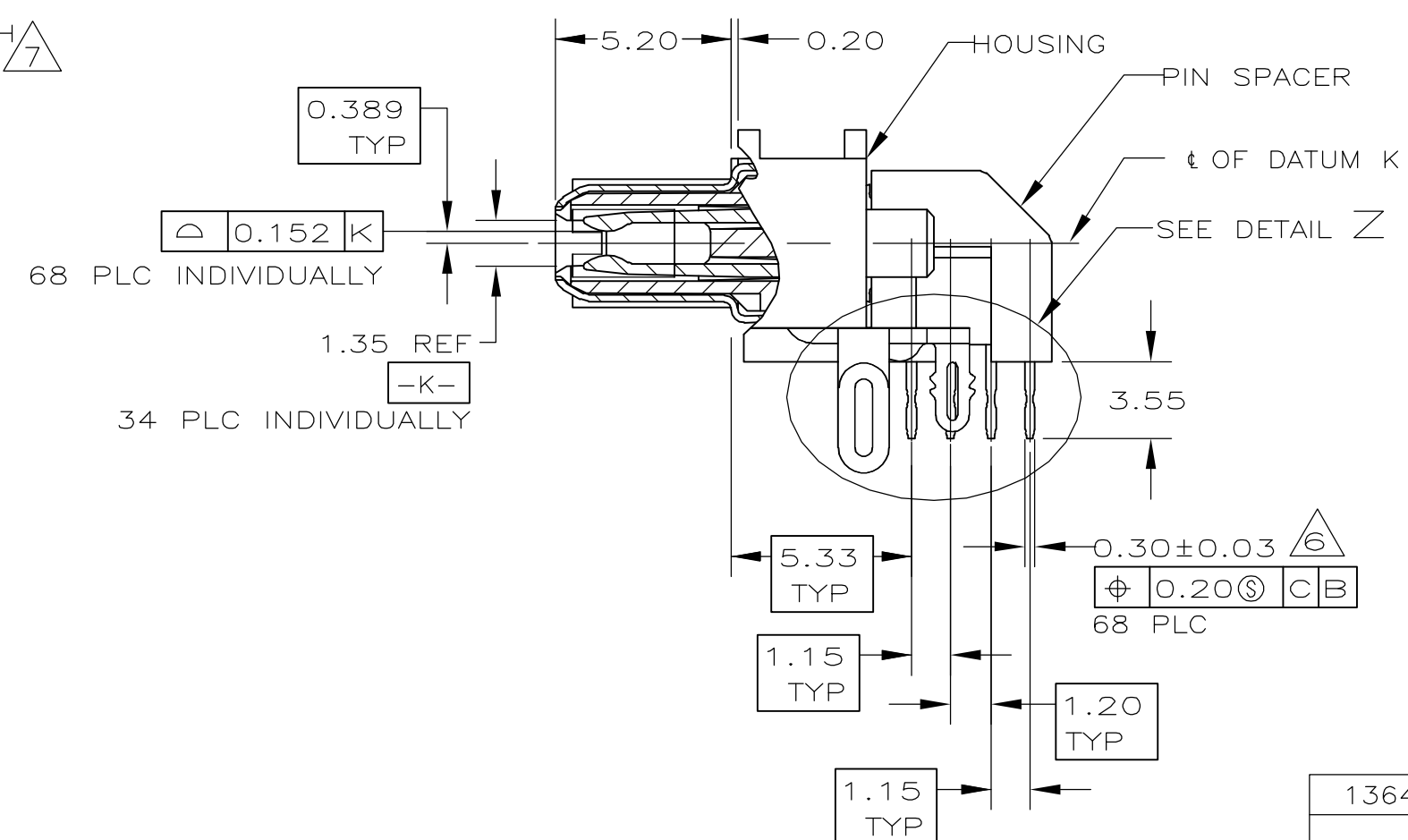
B





A

A



- ① HOUSING & PIN SPACER: THERMOPLASTIC, BLACK, UL 94V-0 RATED.
SHELL: CARBON STEEL.
CONTACTS: PHOSPHOR BRONZE.
BRACKETS: STEEL.
SCREWLOCKS: STAINLESS STEEL.
- ② SHELL: 5.08 μm MIN NICKEL OVER 6.35 μm MIN COPPER.
CONTACTS: 0.76 μm MIN GOLD ON MATING END, 3.75 μm MIN TIN-LEAD
ON SOLDER TAILS, BOTH OVER 1.27 μm MIN NICKEL ON ENTIRE CONTACT.
BRACKETS: TIN PLATED.
3. CONTACTS DESIGNED FOR USE ON 2.35 \pm 0.15 THICK PC BOARD WITH
PLATED THRU MOUNTING HOLES.
- ④ RECEPTACLE ASSEMBLY DESIGNED FOR USE WITH 1.12 \pm 0.08 THICK PANEL.
- ⑤ DATUMS AND DIMENSIONS ESTABLISHED BY CUSTOMER.
- ⑥ POSITION TOLERANCE APPLIES AT CONTACT TIP ONLY.
- ⑦ MAXIMUM TORQUE 0.45 N-M.
- ⑧ DATE CODE MARKED IN APPROXIMATE AREA SHOWN.



THIS DRAWING IS A CONTROLLED DOCUMENT.		DWN T. SHUEY		09MAR05		 Tyco Electronics Corporation Harrisburg, PA 17105-3608	
		CHK J. GERACE		09MAR05			
DIMENSIONS: mm		TOLERANCES UNLESS OTHERWISE SPECIFIED:		APVD M. WALMSLEY		NAME	
		0 PLC ± -		RECEPTACLE ASSEMBLY, 68 POSITION, SHIELDED, RIGHT ANGLE, CHAMP 0.8mm		SIZE A2	
		1 PLC ± -					
		2 PLC ± 0.13					
		3 PLC ± -		APPLICATION SPEC		DRAWING NO	
		4 PLC ± -		—		00779	
ANGLES ± 1°		FINISH		WEIGHT		C=1364973	
MATERIAL				—		RESTRICTED TO	
				CUSTOMER DRAWING		SCALE 5:1 SHEET 1 of 2 REV	

Mouser Electronics

Authorized Distributor

Click to View Pricing, Inventory, Delivery & Lifecycle Information:

[TE Connectivity:](#)

[1364973-2](#)