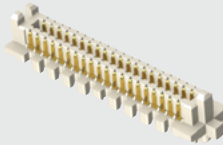


SEAMP-20-02.0-S-10-GP



SEAMP-20-02.0-L-04



SEAMP-20-02.0-L-06

SEAMP SERIES

(1.27 mm) .050"

PRESS-FIT OPEN-PIN-FIELD ARRAY

SPECIFICATIONS

For complete specifications and recommended PCB layouts see www.samtec.com?SEAMP

Insulator Material:

Natural High Temperature Nylon

Contact Material:

Copper Alloy

Operating Temp Range:

-55 °C to +125 °C

Current Rating:

2.5 A per pin (6 adjacent pins powered)

Plating:

Au or Sn over 50 μ" (1.27 μm) Ni

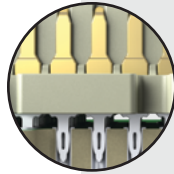
Working Voltage:

215 VAC

RoHS Compliant:

Yes

Mates with:
SEAF, SEAF-RA-GP, SEAFP



Press-fit tails

Able to mate with right-angle socket for micro backplane applications

Large contact wipe

(1.40 mm) .055" NOMINAL WIPE

(1.27 mm) .050" pitch grid

HIGH-SPEED CHANNEL PERFORMANCE

SEAMP/SEAF @ 7 mm Mated Stack Height
Rating based on Samtec reference channel.
For full SI performance data visit Samtec.com or contact SIG@samtec.com

28
Gbps

PROCESSING

Application tooling and one ton minimum press required. Contact ATG@samtec.com for more information.

RECOGNITIONS

For complete scope of recognitions see www.samtec.com/quality



FILE NO. E111594

ALSO AVAILABLE (MOQ Required)

- Other plating options

TOOLING

- Compliant pin fixture CAT-SEAMP-XX-XX

For more information, visit www.samtec.com/tooling

SEAMP	NO. OF POSITIONS PER ROW	02.0	PLATING OPTION	NO. OF ROWS	OPTION
--------------	---------------------------------	-------------	-----------------------	--------------------	---------------

SEAMP
= Press-fit

-10, -20, -30, -40, -50

-L
= 10 μ" (0.25 μm)
Gold on contact area, Matte Tin on tail

-S
= 30 μ" (0.76 μm)
Gold on contact area, Matte Tin on tail

-04
= Four Rows

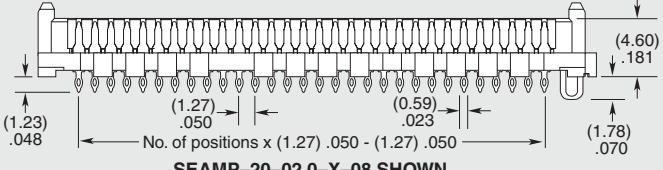
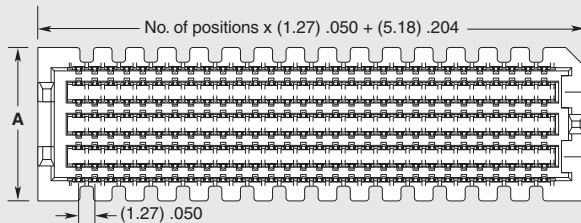
-06
= Six Rows

-08
= Eight Rows

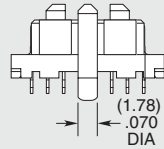
-10
= Ten Rows

-GP
= Guide Post (Mates with SEAF-RA-GP only)

-TR
= Tape & Reel



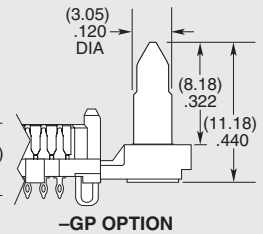
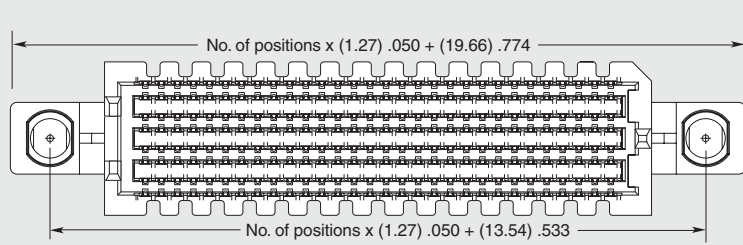
SEAMP-20-02.0-X-08 SHOWN



NO. OF ROWS	A	B
-04	(7.06) .278	(2.54) .100
-06	(9.60) .378	(2.54) .100
-08	(12.14) .478	(5.08) .200
-10	(14.68) .578	(7.62) .300

MATED HEIGHTS*	
SEAMP LEAD STYLE	SEAFP LEAD STYLE
-02.0	-05.0
	7 mm

* Processing conditions will affect mated height. Other stack heights available if mated with SEAF (solder charge tails).



-GP OPTION

Due to technical progress, all designs, specifications and components are subject to change without notice.

Mouser Electronics

Authorized Distributor

Click to View Pricing, Inventory, Delivery & Lifecycle Information:

Samtec:

[SEAMP-40-02.0-S-06](#) [SEAMP-20-02.0-L-04-GP-TR](#) [SEAMP-20-02.0-L-10-TR](#) [SEAMP-20-02.0-S-04-TR](#) [SEAMP-30-02.0-S-04-TR](#) [SEAMP-50-02.0-L-10-GP](#) [SEAMP-20-02.0-S-06-TR](#) [SEAMP-40-02.0-L-06-GP](#) [SEAMP-10-02.0-S-04](#) [SEAMP-20-02.0-L-06-GP](#) [SEAMP-20-02.0-L-06-TR](#) [SEAMP-30-02.0-L-08](#) [SEAMP-30-02.0-S-06-TR](#) [SEAMP-30-02.0-S-08-TR](#) [SEAMP-40-02.0-L-08](#) [SEAMP-20-02.0-L-04-GP](#) [SEAMP-20-02.0-L-04-TR](#) [SEAMP-30-02.0-L-04-GP-TR](#) [SEAMP-30-02.0-S-10-TR](#) [SEAMP-40-02.0-L-06](#) [SEAMP-40-02.0-S-08-TR](#) [SEAMP-40-02.0-S-10-GP-TR](#) [SEAMP-20-02.0-L-06-GP-TR](#) [SEAMP-20-02.0-L-08-GP](#) [SEAMP-20-02.0-S-10](#) [SEAMP-30-02.0-S-10](#) [SEAMP-40-02.0-L-06-TR](#) [SEAMP-40-02.0-S-04-TR](#) [SEAMP-50-02.0-L-06-TR](#) [SEAMP-10-02.0-L-04](#) [SEAMP-20-02.0-L-08-GP-TR](#) [SEAMP-20-02.0-L-10](#) [SEAMP-30-02.0-S-06](#) [SEAMP-40-02.0-L-10](#) [SEAMP-50-02.0-S-04-TR](#) [SEAMP-10-02.0-S-06-TR](#) [SEAMP-30-02.0-L-04-GP](#) [SEAMP-40-02.0-L-06-GP-TR](#) [SEAMP-40-02.0-S-06-TR](#) [SEAMP-50-02.0-L-06](#) [SEAMP-20-02.0-L-04](#) [SEAMP-20-02.0-L-06](#) [SEAMP-30-02.0-L-04-TR](#) [SEAMP-30-02.0-L-06-GP-TR](#) [SEAMP-20-02.0-S-08](#) [SEAMP-30-02.0-L-10](#) [SEAMP-40-02.0-S-10-TR](#) [SEAMP-30-02.0-L-06](#) [SEAMP-30-02.0-L-06-GP](#) [SEAMP-40-02.0-L-04](#) [SEAMP-40-02.0-L-04-TR](#) [SEAMP-40-02.0-S-08](#) [SEAMP-40-02.0-S-10](#) [SEAMP-10-02.0-L-04-GP-TR](#) [SEAMP-10-02.0-L-04-TR](#) [SEAMP-30-02.0-L-10-GP](#) [SEAMP-30-02.0-L-10-TR](#) [SEAMP-40-02.0-L-08-TR](#) [SEAMP-40-02.0-L-10-GP](#) [SEAMP-40-02.0-L-10-TR](#) [SEAMP-50-02.0-L-10-TR](#) [SEAMP-50-02.0-S-06-TR](#) [SEAMP-10-02.0-L-06](#) [SEAMP-10-02.0-S-04-TR](#) [SEAMP-30-02.0-L-06-TR](#) [SEAMP-30-02.0-L-08-TR](#) [SEAMP-30-02.0-S-08](#) [SEAMP-40-02.0-L-08-GP](#) [SEAMP-40-02.0-S-06-GP](#) [SEAMP-50-02.0-L-04](#) [SEAMP-20-02.0-L-10-GP](#) [SEAMP-30-02.0-L-04](#) [SEAMP-30-02.0-S-04](#) [SEAMP-40-02.0-L-04-GP](#) [SEAMP-50-02.0-S-10-GP](#) [SEAMP-50-02.0-L-08](#) [SEAMP-50-02.0-L-10](#) [SEAMP-20-02.0-S-04](#) [SEAMP-30-02.0-L-10-GP-TR](#) [SEAMP-40-02.0-S-06-GP-TR](#) [SEAMP-50-02.0-S-08](#) [SEAMP-50-02.0-S-08-TR](#) [SEAMP-20-02.0-L-08](#) [SEAMP-50-02.0-S-04-GP](#) [SEAMP-40-02.0-L-08-GP-TR](#) [SEAMP-40-02.0-L-10-GP-TR](#) [SEAMP-40-02.0-L-04-GP-TR](#) [SEAMP-50-02.0-S-10](#) [SEAMP-50-02.0-S-10-TR](#) [SEAMP-40-02.0-S-04](#) [SEAMP-50-02.0-S-06-GP](#) [SEAMP-30-02.0-L-08-GP-TR](#) [SEAMP-50-02.0-L-04-GP](#) [SEAMP-50-02.0-S-08-GP](#) [SEAMP-10-02.0-S-06](#) [SEAMP-50-02.0-S-06](#) [SEAMP-50-02.0-S-10-GP-TR](#) [SEAMP-50-02.0-L-06-GP-TR](#) [SEAMP-50-02.0-L-10-GP-TR](#) [SEAMP-30-02.0-S-04-GP-TR](#)