

THIS DRAWING IS UNPUBLISHED.

RELEASED FOR PUBLICATION

20

© COPYRIGHT 20

BY TYCO ELECTRONICS CORPORATION. ALL RIGHTS RESERVED.

LOC

D S

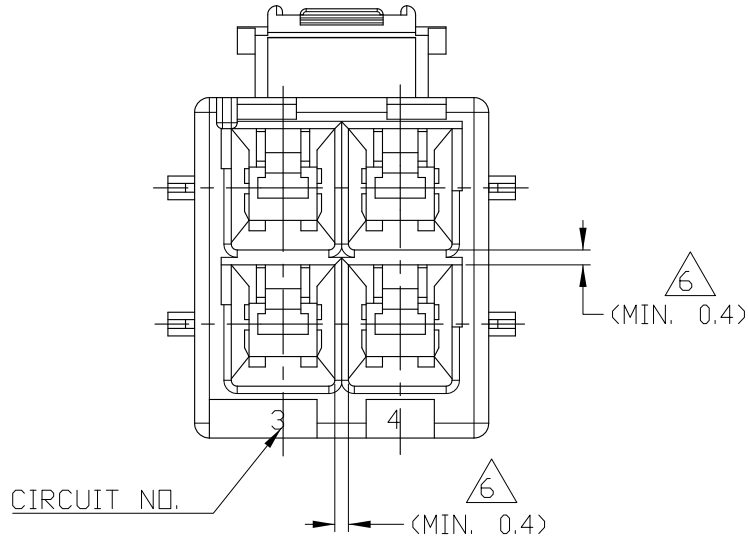
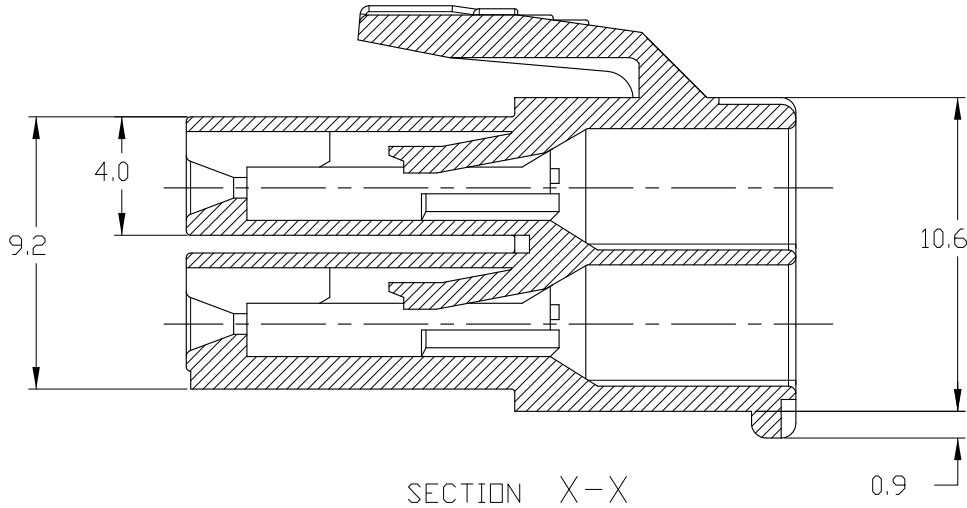
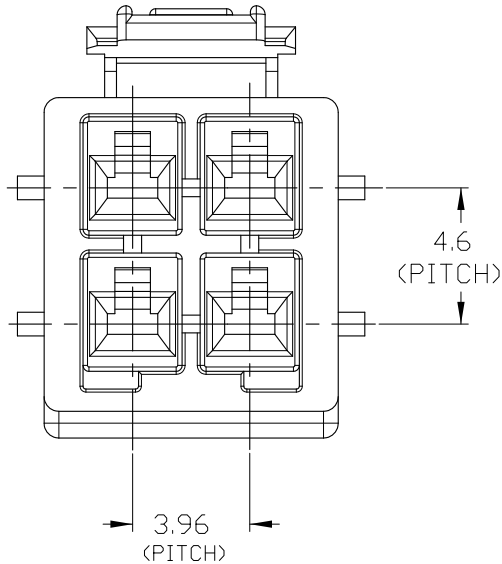
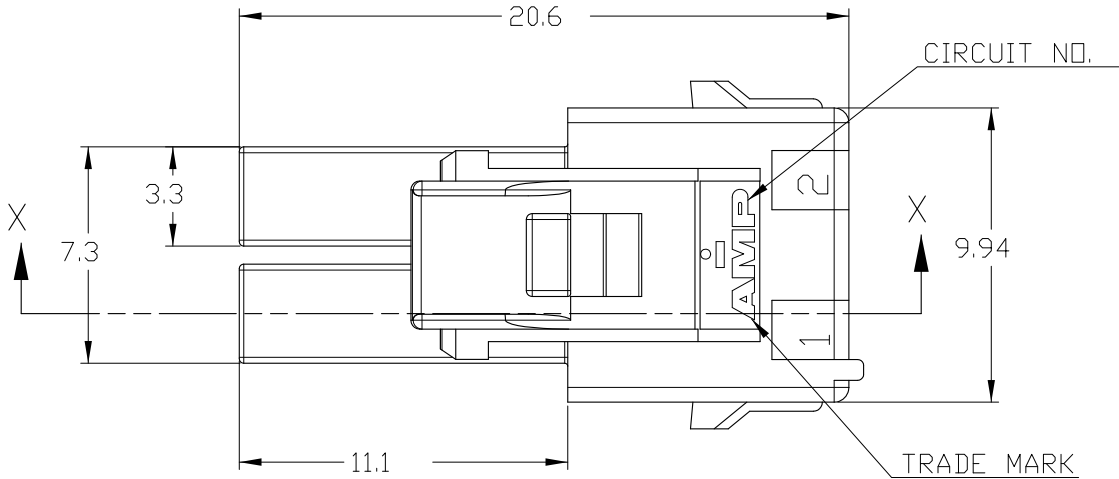
DIST

-

REVISIONS

P	LTR	DESCRIPTION	DATE	DWN	APVD
	C	REVISED (ECR-08-026136)	02.MAR'09	SC	JK
	C1	REVISED (ECR-09-011788)	25.MAY'09	SC	JK

NOTE;
1.APPLICABLE CONTACT P/N
-REC CONTACT:177915- □(AWG#16-#20)
:177914- □(AWG#22-#26)
2.MATING CONN.P/N
-CAP HSG: □-368587-□(FREE HANGING)
□-368589-□(PANEL MOUNT)
-TAB CONTACT:177917- □(AWG#16-#20)
177916- □(AWG#22-#26)
-PC BOARD MOUNT:179840- □
3.APPLICABLE DOUBLE LOCK PLATE:
177918-1(V-□) OR □-368590-1(V-2,GWT)
*IT SHOULD BE USED CERTAINLY WHEN CABLE ASS'Y
4.GENERAL TOLERANCES:±0.3
5.ACCORDING TO IEC 60335-1 4.2 EDITION
-PART MEETS GWT 750°& 850°C.
-MATERIAL MEETS BALL PRESSURE TESTING AT 125°C.
-MATERIAL HAS CTI VALUE OF 250V.
△MIN.THICKNESS OF INSULATING WALL



1-368575-6	© PA66 UL94V-0	BLUE
1-368575-4		YELLOW
1-368575-2		RED
1-368575-1		NATURAL
368575-6	© PA66 UL94V-2	BLUE
368575-4		YELLOW
368575-2		RED
368575-1		NATURAL
P/N	MATERIAL	COLOR

THIS DRAWING IS A CONTROLLED DOCUMENT FOR TYCO ELECTRONICS CORPORATION IT IS SUBJECT TO CHANGE AND THE CONTROLLING ENGINEERING ORGANIZATION SHOULD BE CONTACTED FOR THE LATEST REVISION.	
DIMENSIONS: mm	TOLERANCES UNLESS OTHERWISE SPECIFIED
	0 PLC ± 1 PLC ± 2 PLC ± 3 PLC ± 4 PLC ± ANGLES ±
MATERIAL -	FINISH -

DWN SC KIM	AMP KOREA Kyungsan, Korea			
CHK BW KANG				
APVD JK SONG	NAME			
PRODUCT SPEC 108-61106	PDL 4P PLUG HSG 3.96mm D/R (GWT)			
APPLICATION SPEC -	SIZE	CAGE CODE	DRAWING NO	RESTRICTED TO
WEIGHT -	A3	00779	©- 368575	-
CUSTOMER DRAWING	SCALE N/A	SHEET 1	OF 1	REV C1

Mouser Electronics

Authorized Distributor

Click to View Pricing, Inventory, Delivery & Lifecycle Information:

[TE Connectivity:](#)

[368575-4](#)