

Features

- RoHS compliant* versions available
- Overcurrent/lightning protection to BELLCORE GR-1089
- Typical application is secondary protection on telecom line cards
- UL497A recognition
- Thermal fuse links

4B06B-512-RC - Surge Line Protection Module

Matched Pair of Resistors

Electrical Characteristics

Resistance Values (R1 = R2)	5.6 - 100 Ω
Resistance Tolerance	±5 %
TCR	100 ppm/°C
Ratio Tolerance	±2 %
Temperature Range	-40 °C to +85 °C

Physical Characteristics

Body Style	Open Frame SIP
Substrate Material	96 % Alumina
Lead Frame Material	Copper, solder coated
Flammability	Conforms to UL94V-0
Wave Soldering	260 °C for 3 seconds

Functional Characteristics (per Bellcore GR-1089)

First Level Lightning Surge -

Resistors will remain within tolerance after testing.

1000 Volts Peak, 100 Amp Peak Current,
 Max. Rise/Min. Decay Time 10x1000 μs,
 60 Seconds Between Pulses:
 Number of Pulses25 each resistor each polarity
25 simultaneous each polarity

2500 Volts Peak, 500 Amp Peak Current,
 Max. Rise/Min. Decay Time 2x10 μs,
 60 Seconds Between Pulses:
 Number of Pulses10 simultaneous each polarity

First Level AC Power Fault -

Resistors will remain within tolerance after testing.

50 Vrms, 0.33 Amp Short Circuit Current:
 Duration.....15 minutes

100 Vrms, 0.17 Amp Short Circuit Current:
 Duration.....15 minutes

600 Vrms, 1.00 Amp Short Circuit Current:
 Duration60 One-second pulses

Second Level Lightning Surge -

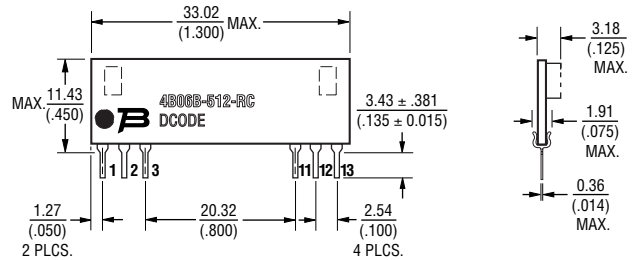
Resistor package must fail safely causing no fire, electrical, or fragmentation hazard.

5000 Volts Peak, 500 Amp Peak Current,
 Max. Rise/Min. Decay Time 2x10 μs:
 Number of Pulses1 simultaneous each polarity

Second Level AC Power Fault -

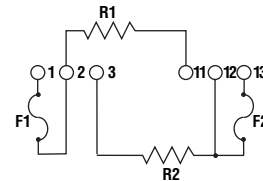
Resistor package must fail safely causing no fire, electrical, or fragmentation hazard.

Product Dimensions



DIMENSIONS: $\frac{\text{MILLIMETERS}}{\text{(INCHES)}}$

Electrical Schematic



How To Order

4B 06 B - 512 - XXX LF

Model _____
 (4B = Open Frame)

Number of Pins _____

Physical Configuration _____

Electrical Configuration _____
 512 = Matched pair of resistors plus thermal fuse

Resistance Code _____
 • 5R6 = 5.6 Ω
 • 100 = 10 Ω
 • 500 = 50 Ω
 • 101 = 100 Ω

RoHS Compliant Option _____
 Blank = Standard Product
 LF = RoHS Compliant Product



Asia-Pacific: TEL +886- (0)2 25624117 • FAX +886- (0)2 25624116

Europe: TEL +41-41 7685555 • FAX +41-41 7685510

Americas: TEL +1-909 781-5500 • FAX +1-909 781-5700

www.bourns.com

*RoHS Directive 2002/95/EC Jan 27, 2003 including Annex.
 Specifications are subject to change without notice.
 Customers should verify actual device performance in their specific applications.

Mouser Electronics

Authorized Distributor

Click to View Pricing, Inventory, Delivery & Lifecycle Information:

Bourns:

[4B06B-512-500](#) [4B06B-512-360](#) [4B06B-512-100LF](#) [4B06B-512-5R6](#) [4B06B-512-5R6LF](#) [4B12B-P91-000](#)