

LOC	DIST	REVISIONS					
		P	LTR	DESCRIPTION	DATE	DWN	APVD
-	-		A	NEW RELEASE	23OCT2008	CR	DO

1. PART NUMBER CHANGES AND/OR DESIGN CHANGES AFFECTING INTERCHANGEABILITY REQUIRE PRIOR TYCO ELECTRONICS APPROVAL AND AUTHORIZATION BY REVISION TO THIS DRAWING
2. ITEMS PROVIDED TO THIS SPECIFICATION TO BE PERMANENTLY IDENTIFIED PER THE FOLLOWING IDENTIFIER LABEL

TYCO ELECTRONICS P/N

DATE CODE

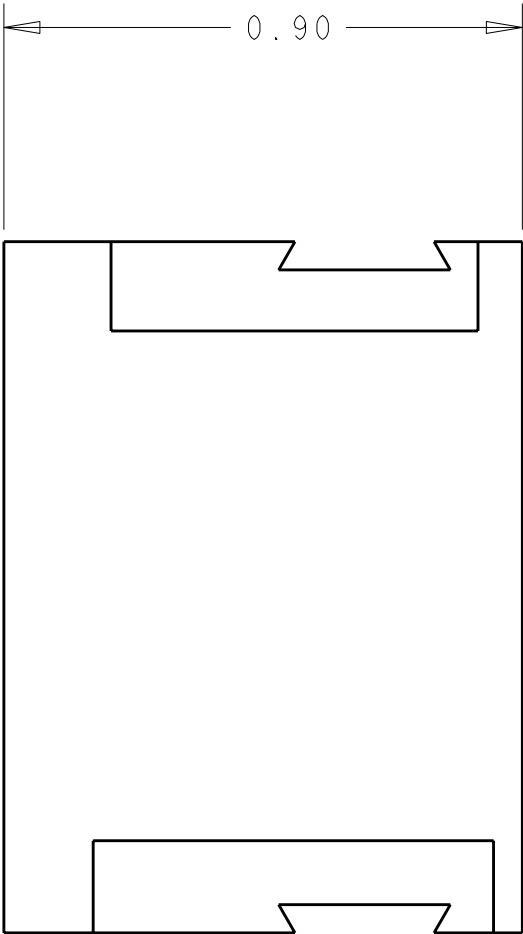
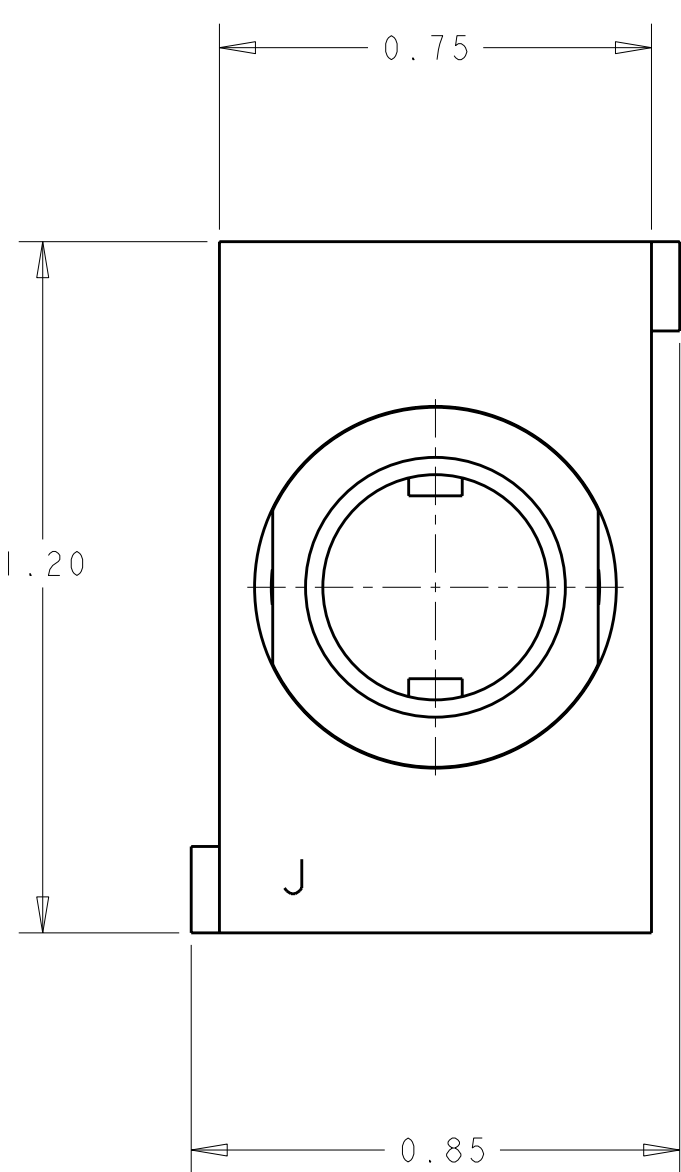
YEAR

WEEK

XXXXXXX-X

XXXX

(e.g. 0106)





ELCON

DOMINO

THIS DRAWING IS A CONTROLLED DOCUMENT FOR TYCO ELECTRONICS CORPORATION  
IT IS SUBJECT TO CHANGE AND THE CONTROLLING ENGINEERING ORGANIZATION  
SHOULD BE CONTACTED FOR THE LATEST REVISION.

DIMENSIONS: INCHES		TOLERANCES UNLESS OTHERWISE SPECIFIED:	
	0 PLC	±	-
	1 PLC	±	-
	2 PLC	±.02	
	3 PLC	±.010	
	4 PLC	±	-
ANGLES		±.5	
MATERIAL		FINISH	-

DWN	23OCT2008
CHK	C. ROHLER
APVD	23OCT2008
APVD	D. ORRIS
APVD	M. PERCHERKE
PRODUCT SPEC	-
APPLICATION SPEC	-
WEIGHT	-
CUSTOMER DRAWING	

AS SHOWN		6650680-1	
DESCRIPTION		PART NO.	
 <b>Tyco Electronics</b>		Tyco Electronics Harrisburg, PA 17105-3608	
NAME HOUSING, PERPENDICULAR SOCKET SIDE MODULE J DOMINO			
SIZE	CAGE CODE	DRAWING NO	RESTRICTED TO
A3	00779	C-6650680	-
		SCALE 3:1	SHEET 1 OF 1 REV A

# Mouser Electronics

Authorized Distributor

Click to View Pricing, Inventory, Delivery & Lifecycle Information:

[TE Connectivity:](#)

[6650680-1](#)