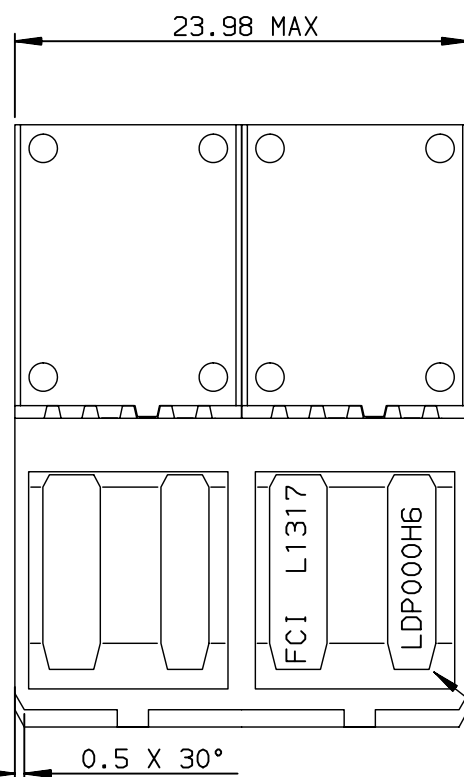
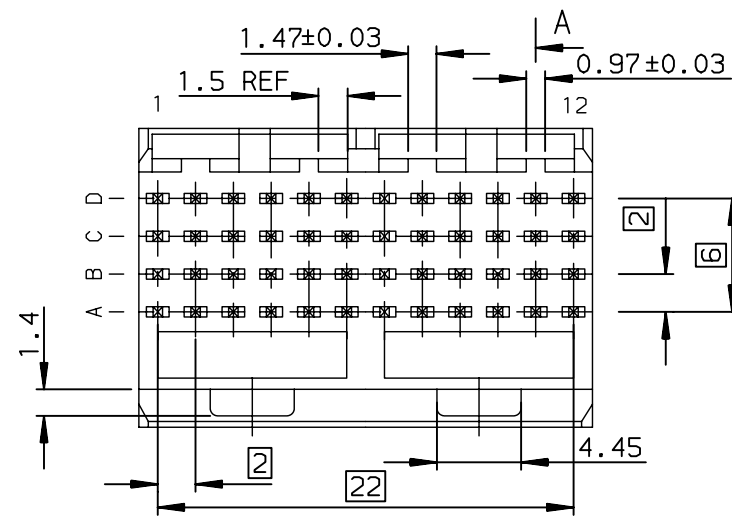
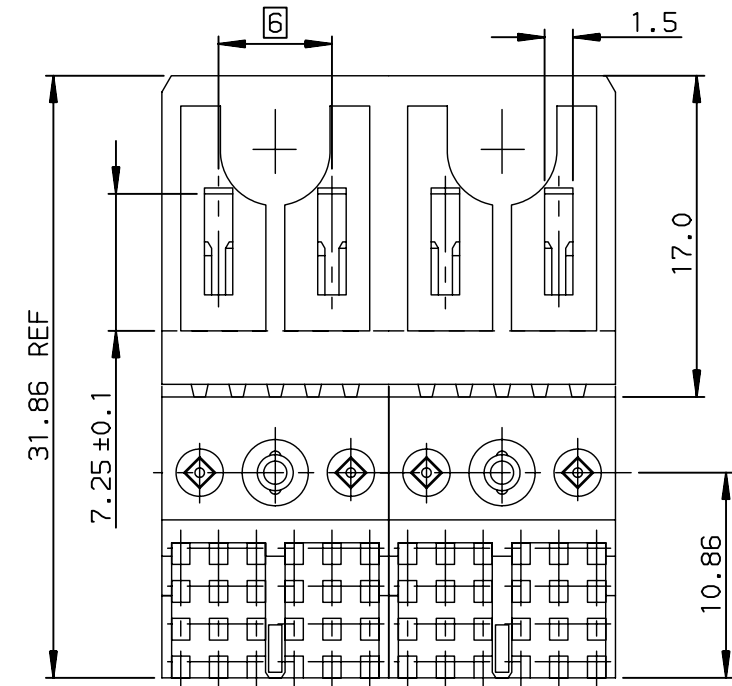
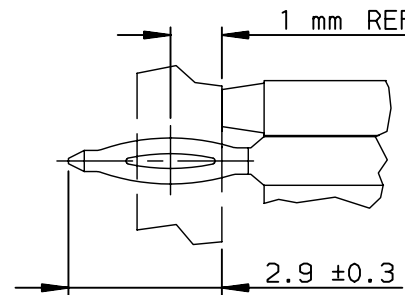




Copyright FCI.

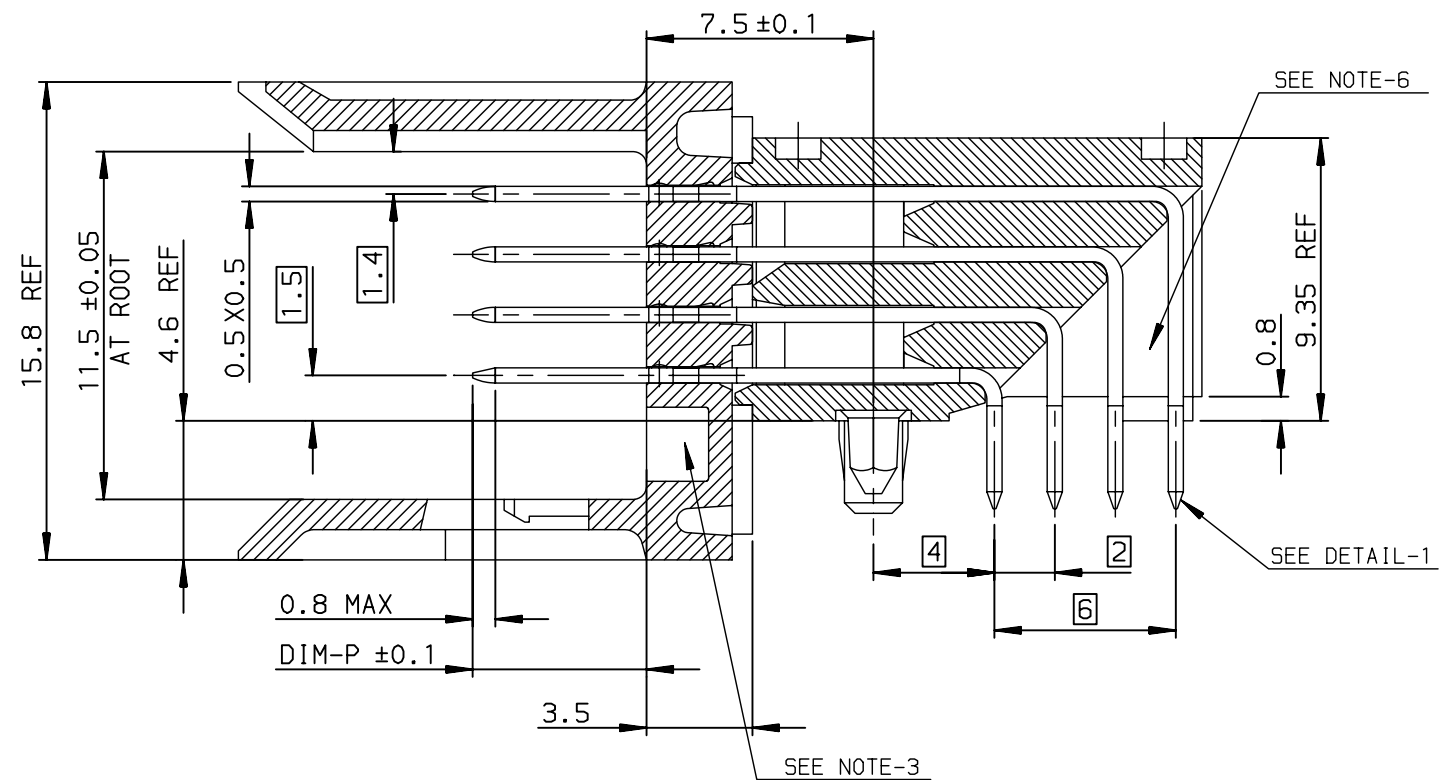


DETAIL-1: PRESS-FIT TAIL



- NOTE-1: NORMINATIVE REF = IEC-61076-4-104
NOTE-2: ONE CENTER PEG FOR HOLD DOWN FORCE
NOTE-3: CODING RECESS FOR 8MM EXTENDED KEYS
NOTE-4: PRODUCT MARKING = PRODUCT NUMBER + BATCH CODE + FCI
FOR 2 MODULE SIZE,END OF PART NUMBER ONLY
NOTE-6: CENTRAL WALL WITH END REAR SUPPORT
NOTE-7: PACKAGING IN TRAY + COVER
IF SUFFIX "P" IS ADDED IN P/N PACKAGING IS IN TRAYS
BUT CONNECTOR MARKING IS WITHOUT "P"
EXAMPLE: HM1XXXXXXXXXH6P, MARKED HM1XXXXXXXXXH6

SECTION-A SCALE:4/1






GENERAL CHARACTERISTICS AND ROHS INFORMATIONS:

SEE PRODUCT SPECIFICATION GS-12-445

OTHERS INFORMATIONS,SEE DRW C-8626-0151-2

European Views

rev	ecn no	dr	date
E	-	PCH	2004/07/09
F	LS05-0056	LGO	2005/07/06
G	LS06-0097	LGO	2006/07/12
H	LS07-0184	MLE	2007/07/25
-	-	-	-
-	-	-	-
-	-	-	-

www.fciconnect.com			surface ISO 1302		tolerance std ISO 406 ISO 1101		projection 		mm 			
			TOLERANCES UNLESS OTHERWISE SPECIFIED									
Dr	CHAMPION	1994/04/05	ANGULAR	LINEAR	0.X	±0.1	size A3	Scale 2.5				
Eng	LENOIR	1994/04/05			0.XX	±0.1						
Chr	LEGARE	1994/04/05			0.XX' ±2°	0.XXX		±0.1	ECN LS07-0184			
Appr	LEGARE	1994/04/05	Product family				METRAL	Spec ref -				
			title				METRAL RA HDR WB CONV				dwg no C-8626-0151-1	Rev. H
			4x12 CTS - PF - PUSH PEG									
			catalog no				-					
							CUSTOMER				sheet 1 of 2	

TIN LEAD PART NUMBER

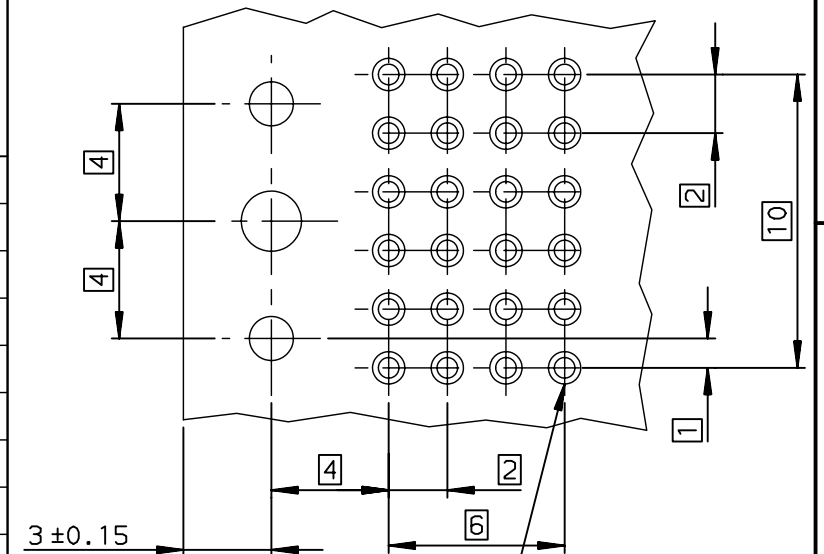
LEAD FREE PART NUMBER

PART NUMBER / CONTACT LOADING						
DIM-P ±0.10				P/N AND PERFORMANCE LEVEL		SP N°
ROW-A	ROW-B	ROW-C	ROW-D			
5.00	5.00	5.00	5.00		HM1L42ADP000H6P	
5.75	5.75	5.75	5.75		HM1L42LDP000H6P	
6.50	6.50	6.50	6.50		HM1L42DDP000H6P	
6.50	5.00	5.00	5.00		HM1L42BDP000H6P	
6.50	5.75	5.75	6.50		HM1L42CDP000H6P	
5.00	5.00	6.50	5.00		HM1L42ZDP110H6P	110
5.00	5.75	6.50	5.00		HM1L42ZDP430H6P	430
5.00	5.75	5.00	5.00		HM1L42ZDP448H6P	448
5.75	5.00	5.00	5.00		HM1L42ZDP009H6P	009
5.75	6.50	5.75	5.00		HM1L42ZDP424H6P	424
6.50	5.75	6.50	5.75		HM1L42ZDP037H6P	037
6.50	5.75	5.00	5.75		HM1L42ZDP102H6P	102
6.50	6.50	6.50	5.75		HM1L42ZDP135H6P	135
6.50	5.75	5.75	5.75		HM1L42ZDP369H6P	369
8.00	6.50	6.50	6.50		HM1L42ZDPA07H6P	A07

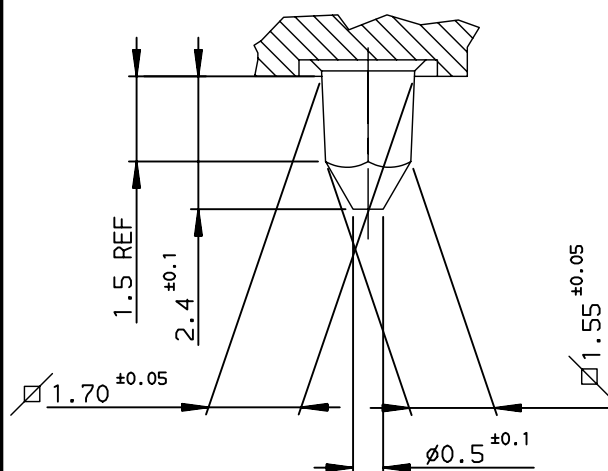
STANDARD MATING LENGTHS = 5.75 (AND 5.00-6.50)

PART NUMBER / CONTACT LOADING						
DIM-P ±0.10				P/N AND PERFORMANCE LEVEL		SP N°
ROW-A	ROW-B	ROW-C	ROW-D			
5.00	5.00	5.00	5.00		HM1L42ADP000H6PLF	
5.75	5.75	5.75	5.75		HM1L42LDP000H6PLF	
6.50	6.50	6.50	6.50		HM1L42DDP000H6PLF	
6.50	5.00	5.00	5.00		HM1L42BDP000H6PLF	
6.50	5.75	5.75	6.50		HM1L42CDP000H6PLF	
5.00	5.00	6.50	5.00		HM1L42ZDP110H6PLF	110
5.00	5.75	6.50	5.00		HM1L42ZDP430H6PLF	430
5.00	5.75	5.00	5.00		HM1L42ZDP448H6PLF	448
5.75	5.00	5.00	5.00		HM1L42ZDP009H6PLF	009
5.75	6.50	5.75	5.00		HM1L42ZDP424H6PLF	424
6.50	5.75	6.50	5.75		HM1L42ZDP037H6PLF	037
6.50	5.75	5.00	5.75		HM1L42ZDP102H6PLF	102
6.50	6.50	6.50	5.75		HM1L42ZDP135H6PLF	135
6.50	5.75	5.75	5.75		HM1L42ZDP369H6PLF	369
8.00	6.50	6.50	6.50		HM1L42ZDPA07H6PLF	A07

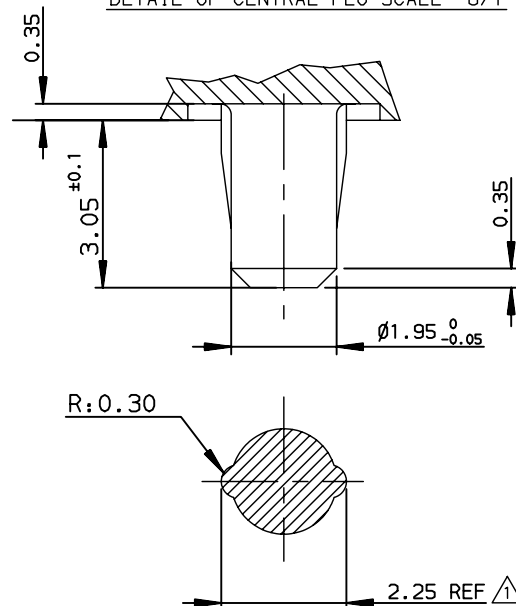
STANDARD MATING LENGTHS = 5.75 (AND 5.00-6.50)

RECOMMENDED PCB LAYOUT
PER 12MM LENGTHHole according to product spec
GS-12-445 (for press-fit) ,
GS-12-446 (for STB)

DETAIL OF LOCATING PEGS (2x) SCALE 8/1






DETAIL OF CENTRAL PEG SCALE 8/1



OTHERS INFORMATIONS, SEE DRW 8626-0151-1

European Views

www.fciconnect.com			surface ISO 1302		tolerance std ISO 406 ISO 1101		projection 		mm 		
			TOLERANCES UNLESS OTHERWISE SPECIFIED								
Dr	CHAMPION	1994/04/05	ANGULAR	LINEAR	0.X	±0.1	size A3	Scale 4			
Eng	LENOIR	1994/04/05			0.XX	±0.1					
Chr	LEGARE	1994/04/05			0.XX' ±2°	0.XXX					±0.1
Appr	LEGARE	1994/04/05	Product family				METRAL		Spec ref -		
			title METRAL RA HDR WB CONV 4x12 CTS - PF - PUSH PEG				dwg no C-8626-0151-2		Rev. H		
			catalog no -				CUSTOMER		sheet 2 of 2		

Mouser Electronics

Authorized Distributor

Click to View Pricing, Inventory, Delivery & Lifecycle Information:

[FCI / Amphenol:](#)

[HM1L42ADP000H6PLF](#) [HM1L42DDP000H6PLF](#) [HM1L42LDP000H6PLF](#)