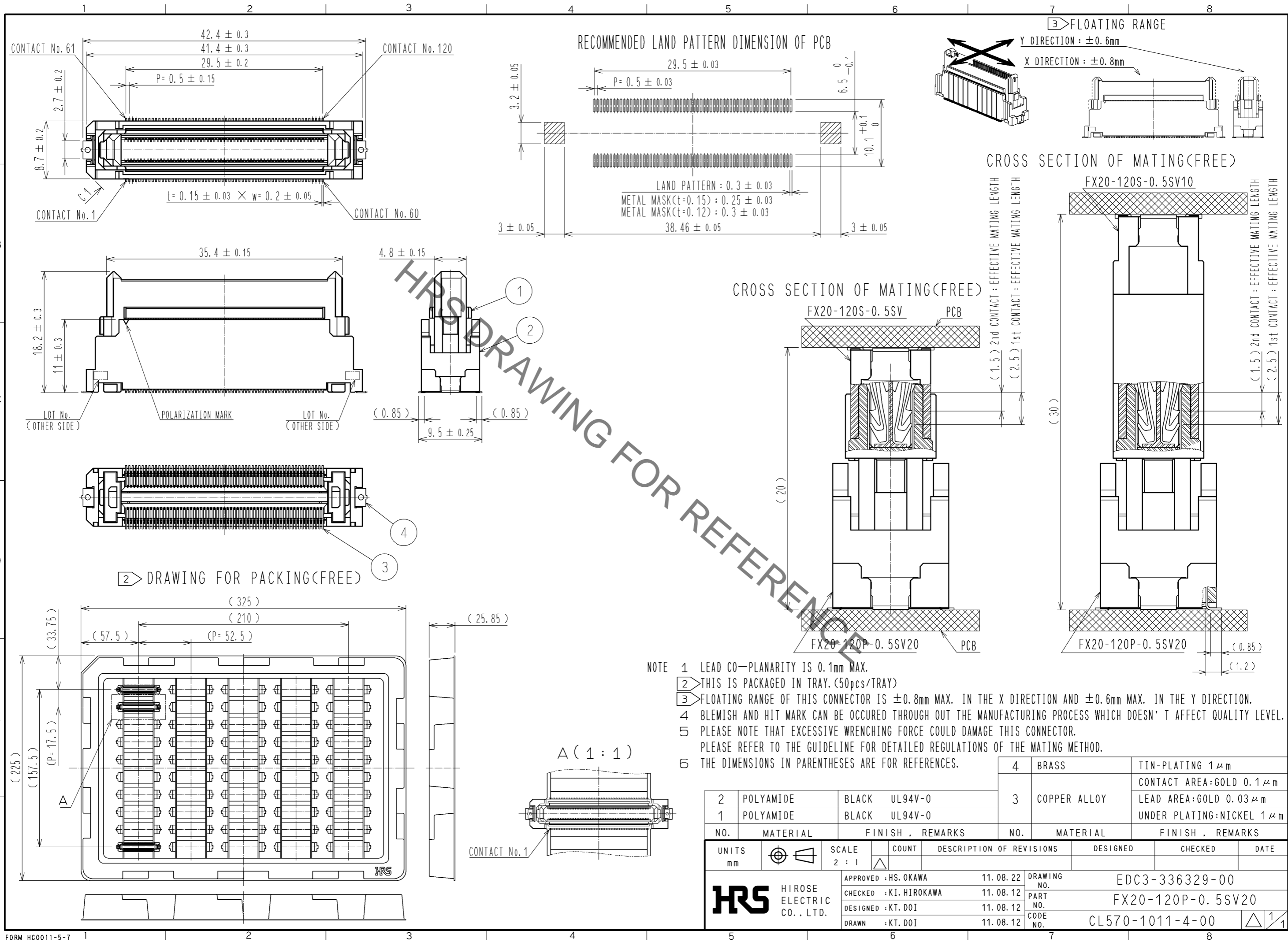


Oct.1.2020 Copyright 2020 HIROSE ELECTRIC CO., LTD. All Rights Reserved.  
 In case of consideration for using Automotive equipment / device which demand high reliability, kindly contact our sales window correspondents.



NO.	MATERIAL	FINISH	REMARKS	NO.	MATERIAL	FINISH	REMARKS
2	POLYAMIDE	BLACK	UL94V-0	4	BRASS	TIN-PLATING	$1\mu\text{m}$
1	POLYAMIDE	BLACK	UL94V-0	3	COPPER ALLOY	CONTACT AREA:	GOLD $0.1\mu\text{m}$
						LEAD AREA:	GOLD $0.03\mu\text{m}$
						UNDER PLATING:	NICKEL $1\mu\text{m}$

UNITS	SCALE	COUNT	DESCRIPTION OF REVISIONS	DESIGNED	CHECKED	DATE
mm	2 : 1	△				
APPROVED : HS. OKAWA			11.08.22	DRAWING NO. EDC3-336329-00		
CHECKED : KI. HIROKAWA			11.08.12	PART NO. FX20-120P-0.5SV20		
DESIGNED : KT. DOI			11.08.12	CODE NO. CL570-1011-4-00		
DRAWN : KT. DOI			11.08.12			