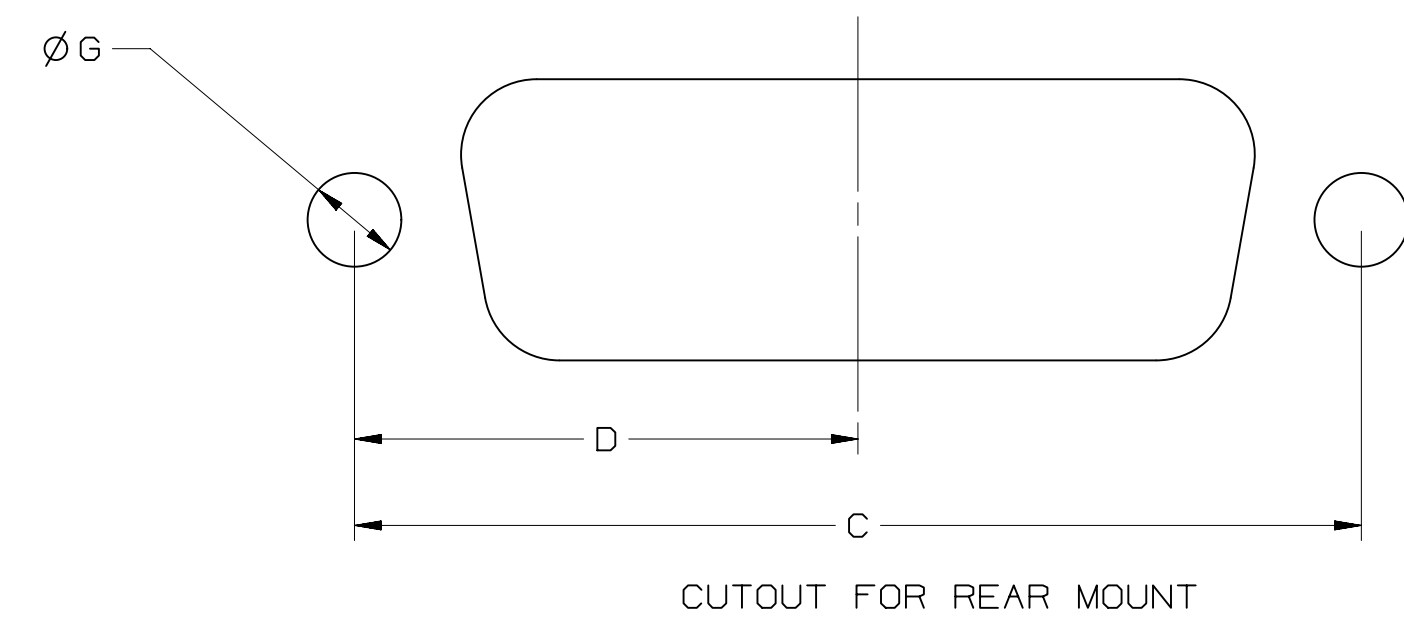
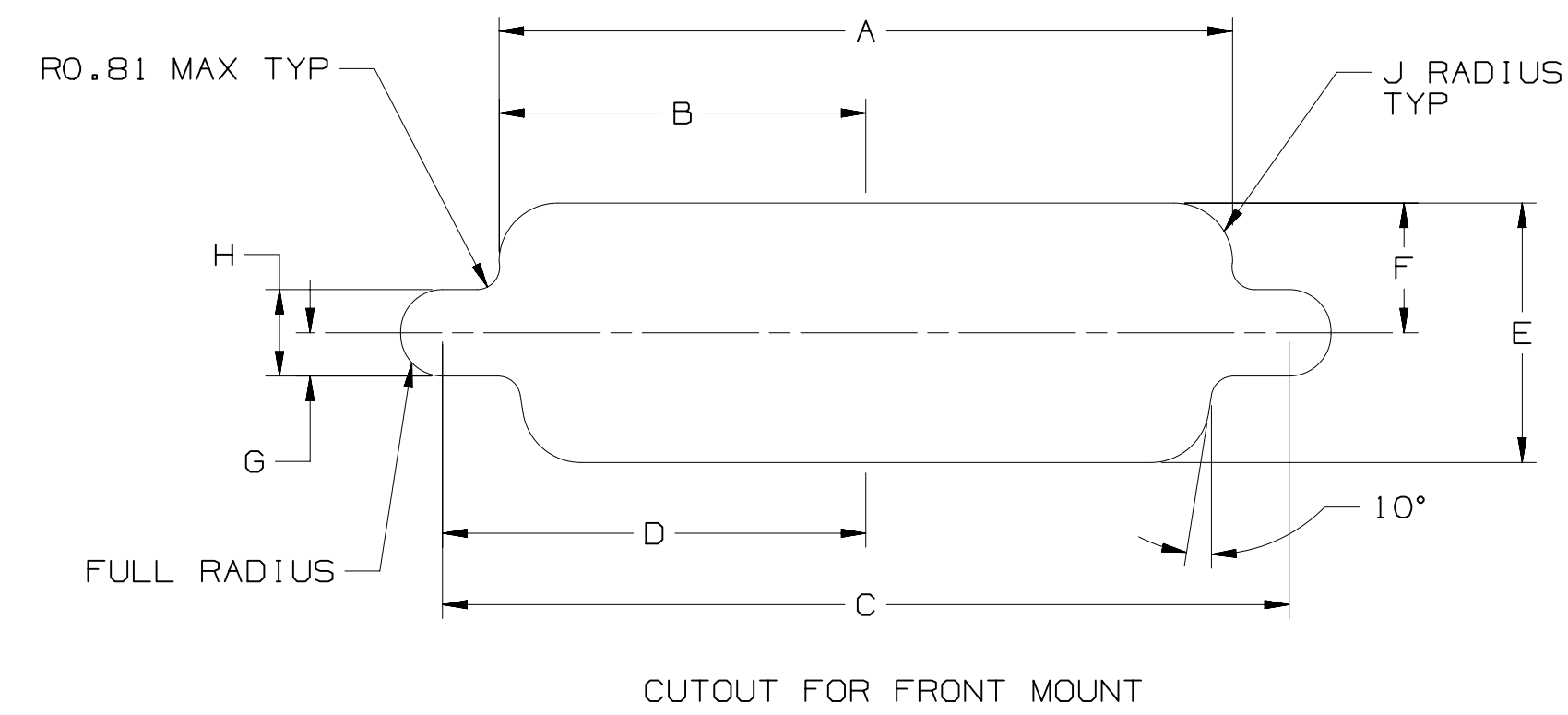


POSITION	MOUNTING METHOD	A	B	C	D	E	F	G	H	J
9	FRONT	.874(22.2)	.437(11.1)	.984(25.0)	.492(12.5)	.513(13.0)	.257(6.5)	.120(3.1)	.060(1.5)	.083(2.1)
	REAR	.806(20.5)	.403(10.2)	.984(25.0)	.492(12.5)	.449(11.4)	.225(5.7)	.120(3.1)	.060(1.5)	.132(3.4)
15	FRONT	1.202(30.5)	.601(15.3)	1.312(33.3)	.656(16.7)	.513(13.0)	.257(6.5)	.120(3.1)	.060(1.5)	.083(2.1)
	REAR	1.134(28.8)	.567(14.4)	1.312(33.3)	.656(16.7)	.449(11.4)	.225(5.7)	.120(3.1)	.060(1.5)	.132(3.4)
25	FRONT	1.743(44.3)	.872(22.2)	1.852(47.0)	.926(23.5)	.513(13.0)	.257(6.5)	.120(3.1)	.060(1.5)	.083(2.1)
	REAR	1.674(42.5)	.837(21.3)	1.852(47.0)	.926(23.5)	.449(11.4)	.225(5.7)	.120(3.1)	.060(1.5)	.132(3.4)
37	FRONT	2.391(60.7)	1.196(30.4)	2.500(63.5)	1.250(31.8)	.513(13.0)	.257(6.5)	.120(3.1)	.060(1.5)	.083(2.1)
	REAR	2.326(59.1)	1.163(29.5)	2.500(63.5)	1.250(31.8)	.449(11.4)	.225(5.7)	.120(3.1)	.060(1.5)	.132(3.4)
50	FRONT	2.297(58.3)	1.149(29.2)	2.406(61.1)	1.203(30.6)	.623(15.8)	.312(7.9)	.120(3.1)	.060(1.5)	.083(2.1)
	REAR	2.218(56.3)	1.109(28.2)	2.406(61.1)	1.203(30.6)	.555(14.1)	.278(7.1)	.120(3.1)	.060(1.5)	.132(3.4)



C	46292	MAR 28, 2013	SJS	ARM
		CORRECT SHELL MATL		
B	35416	AUG 29, 2011	SJS	ARM
		CHANGE MOHMS TO mOHMS, UPDATE ROHS		
A	34511	MAY 17, 2011	SJS	ARM
		MAY 17, 2011		

DESIGN REFERENCE	NEXT ASSEMBLY	REV	ECO	ISSUE DATE AND DESCRIPTION	DRFT	CHKD
		SJS		MAY 17, 2011		
		ARM		MAY 17, 2011		
DIVISION		DIVISION CODE				
DO NOT SCALE DRAWING		SCALE	TOLERANCES EXCEPT AS NOTED			
THIRD ANGLE PROJECTION		INCHES	MILLIMETERS			
INTERPRET PER ASME Y14.5 - 1994		0 ± .1	.0 ± .05			
MAX SURFACE ROUGHNESS		.00 ± .005	.000 ± .005			
125		✓	ALL SURFACES MARKED ONLY			
		ANGLES ± 1°				
3M Center St. Paul, MN 55144		© 3M COPYRIGHT 2013 This document and the information it contains are 3M property and may not be reproduced or further distributed without 3M permission, or used or disclosed other than for 3M authorized purposes. All rights reserved.				
TITLE		8PXX-X00X D-SUB SOLDER CUP PLUG TS-2357				
CAGE NUMBER	SIZE	DRAWING NO.	REV.			
D		78-5100-2357-1	C			
MODEL	BP		SHT 2 OF 2			

DRAWING NUMBER 78-5100-2357-1