

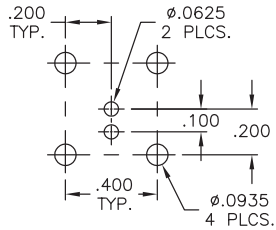
THE INFORMATION CONTAINED HEREON IS THE PROPERTY OF EMERSON NETWORK POWER, RECEIPT, POSSESSION OR TRANSMITTAL OF THIS DRAWING DOES NOT LICENSE OR IMPLY ANY RIGHT TO USE, SELL, PROTOTYPE OR MANUFACTURE FROM THIS INFORMATION. NO REPRODUCTIONS OR PUBLICATION OF THIS INFORMATION, IN WHOLE OR IN PART, SHALL BE MADE WITHOUT WRITTEN AUTHORIZATION FROM EMERSON NETWORK POWER.

DWG NO. 3-0272 SH 1

DASH NO	FIG NO	CONNECTOR TYPE	MODEL NO
-1	1	2-LUG	CBBJ79TL
-2	2	3-LUG	CBBJ79
-3	3	THREADED	CBBJ379
-4	4	4-LUG	CBBJ79FL
-5	1	2-LUG	CBBJ79TLS
-6	2	3-LUG	CBBJ79S
-7	3	THREADED	CBBJ379S
-8	4	4-LUG	CBBJ79FLS

REVISIONS			
REV	DESCRIPTION	DATE	APPROVED
C	ECO 12672	1/7/99	C.N.M.
D	ECO 52441	6/10/10	T. KOHLER

RECOMMENDED
MTG HOLE PATTERN
SCALE 2:1



RECOMMENDED
PANEL CUTOUT
SCALE 2:1

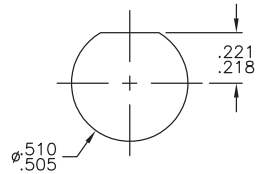


FIG 1

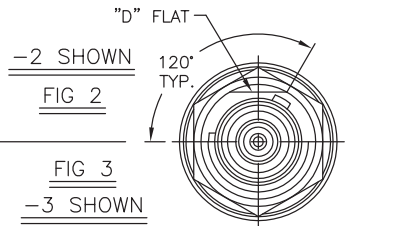
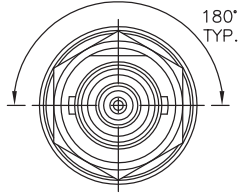
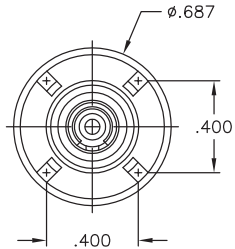
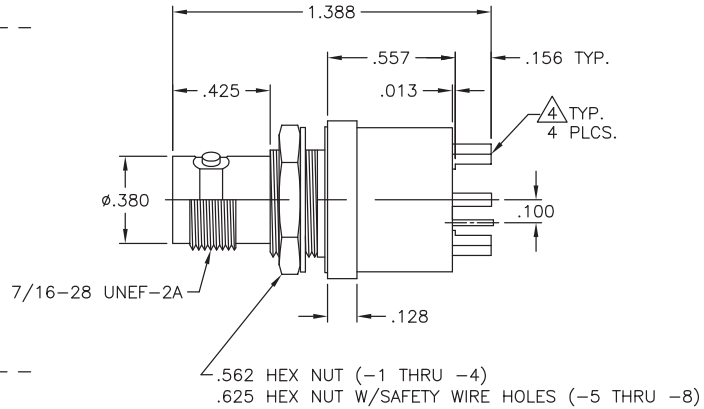
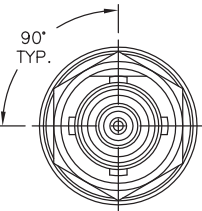



FIG 4



4. PRE-TINNED, .0015 MAXIMUM THICKNESS WITH SN63 OR EQUIVALENT SOLDER, PER QQ-S-571, TO WITHIN .060 MAXIMUM OF SHOULDER, AFTER PLATING.
3. MAXIMUM PANEL THICKNESS .109
2. FEMALE 2/3/4 LUG & THREADED CONCENTRIC BOARD AND NON-INSULATED BULKHEAD MOUNT RECEPTACLE.

FINISH: TFS-1A (NICKEL)

SURFACE AREA (IN ²)		UNLESS OTHERWISE SPECIFIED DIMENSIONS ARE IN INCHES TOLERANCES ARE: FRACTIONS DECIMALS ANGLES ± .XX ± ± .XXX ± .005 .XXXX + .0010		 cinch CONNECTIVITY SOLUTIONS a bel group	
		SIGNATURES		DATE	
MATERIAL		DRAWN BY C. WALLACE		6/17/10	
FINISH		CHECKED BY		APPROVED BY	
1		APPROVED BY		APPROVED BY	
DO NOT SCALE DRAWING		APPROVED BY		APPROVED BY	
		CBBJ79/TL/FL/379 CBBJ79S/TLS/FLS/379S			
		SIZE	CAGE CODE	DWG NO.	REV
		B	14949	3-0272	D
		SCALE	2:1	DATE: 4/9/85	SHEET 1 OF 2

Mouser Electronics

Authorized Distributor

Click to View Pricing, Inventory, Delivery & Lifecycle Information:

[Cinch Connectivity Solutions:](#)

[CBBJ379](#)