

4

3

2

1

THIS DRAWING IS UNPUBLISHED.

RELEASED FOR PUBLICATION

© COPYRIGHT

ALL RIGHTS RESERVED.

LOC

DIST


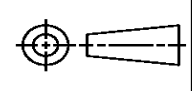
REVISIONS

P	LTR	DESCRIPTION	DATE	DWN	APVD
	C2	ECR-14-010131	18AUG2014	GK	HMR

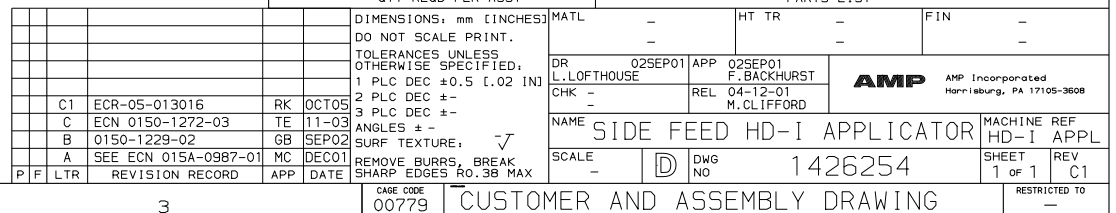
REPLACED BY OCEAN STYLE APPLICATOR PART  
NUMBER 2266323-1

FOR REPLACEMENT PARTS FOR APPLICATOR 1426254  
REFER TO ADDITIONAL PAGE(S). SPARE PARTS KIT (IF LISTED)  
WILL REMAIN AVAILABLE.

THE REPLACEMENT OCEAN STYLE APPLICATOR HAS THE  
SAME TERMINATOR/PRESS INTERFACE AS APPLICATOR  
1426254

THIS DRAWING IS A CONTROLLED DOCUMENT.		DWN Gopalakrishna HV		 TE Connectivity			
DIMENSIONS:		CHK RAGHAVENDRA					
		APVD RAGHAVENDRA		NAME SIDE FEED HD-I APPLICATOR			
		PRODUCT SPEC					
		APPLICATION SPEC					
MATERIAL		WEIGHT		SIZE A3	CAGE CODE	DRAWING NO C- 1426254	RESTRICTED TO
FINISH		CUSTOMER DRAWING		SCALE		SHEET 1 OF 2	REV C2

AMP 1756 REV 3-92 27-OCT-05 13:33:14 us024474



-	1	1	1	1	1	1	1	1490525-3	DEPRESSOR, WIRE	73
-	1	1	1	1	1	1	1	1426254	PRINT, APPLICATOR LOG SHEET	72
-	1	1	1	1	1	1	1	1338705-1	DOCUMENTATION PACKAGE	71
-	3	3	3	3	3	3	3	2-23147-1	SPRING, DEPRESSOR	70
-	1	1	1	1	1	1	1	1490524-1	SPACER, DEPRESSOR	69
-	2	2	2	2	2	2	2	18025-1	WASHER, LOCK (M3) STR GDE	68
-	1	1	1	1	1	1	1	461264-1	PLATE, IDENTIFICATION	67
-	2	2	2	2	2	2	2	21017-2	SCR,DRIVE (#2x.19) ID PLATE	66
-	1	1	1	1	1	1	1	1424350-1	HOLDER, PIN, WIRED	65
-	1	1	1	1	1	1	1	986950-1	WASHER, FLAT PRECISION	64
-	1	1	1	1	1	1	1	3-18031-0	SCR,SKT SET (M6X6) RAM	63
-	1	1	1	1	1	1	1	18023-9	SCR,SHC (M4X6) INS DISC	62
-	2	2	2	2	2	2	2	2-18032-5	SCR,SET (M5X20) DRAG	61
-	1	1	1	1	1	1	1	18024-7	SCR,BHC (M4X10) ANVIL	60
-	1	1	1	1	1	1	1	5-18022-2	SCR,HEX (M4X8) FEED FINGER	59
										58
										57
-	1	1	1	1	1	1	1	1338683-1	PAWL, FEED	56
-	1	-	-	1	-	-	-	1338723-1	HOLDER,SHEAR, REAR (NO CUT)	55
-	4	4	4	4	4	4	4	18024-8	SCR,BHC (M4X12) SHEAR HOLDER	54
-	2	2	2	2	2	2	2	1-18023-3	SCR,SHC (M4X16) TERM HLD DWN	53
										52
										51
										50
-	1	1	1	1	1	1	1	18024-3	SCR,BHC (M3X10) CAM	49
-	-	1	-	-	1	-	-	1338675-1	CAM, PRE FEED 30 & 40 mm ST	48
-	1	-	1	1	-	1	-	1338676-1	CAM, POST FEED 30 & 40 mm ST	47
-	1	1	1	1	1	1	1	1320999-3	APPLICATOR BASIC SUBASSY	46
-	1	1	1	1	1	1	1	690191-1	PLUG, NYLON	45
-	1	1	1	1	1	1	1	1338660-1	RAM	44
-	1	1	1	1	1	1	1	690125-1	WASHER, LAMINATED	43
-	1	1	1	1	1	1	1	690124-1	WASHER, RAM	42
-	1	1	1	1	1	1	1	2-18024-6	SCR,BHC (M8X25) RAM	41
-	1	1	1	1	1	1	1	23241-1	BALL, STEEL	40
-	1	1	1	1	1	1	1	2-22278-7	SPRING, COMPRESSION	39
-	1	1	1	1	1	1	1	1320922-1	DISC, INSULATION	38
-	1	1	1	1	1	1	1	354777-1	WIRE DISC, PLASTIC	37
-	1	1	1	1	1	1	1	22480-5	WASHER, SPRING	36
-	1	1	1	1	1	1	1	690212-1	POST, RAM	35
										34
-	2	2	2	2	2	2	2	18023-2	SCREW,SHC (M3X6) FRT STRP GDE	33
-	1	1	1	1	1	1	1	18027-2	WASHER, FLAT (M4)	32
-	1	1	1	1	1	1	1	1-18023-2	SCR,SKT CAP (M4X12) MOUNT BLOCK	31
										30
-	1	1	1	1	1	1	1	1633082-1	STRIP GUIDE PLATE ASSY	29
-	1	1	1	1	1	1	1	1-455888-5	SPACER, FRONT SHEAR DEP	28
-	2	2	2	2	2	2	2	1-22284-0	SPRING, DRAG	27
-	1	1	1	1	1	1	1	356835-1	LEVER, DRAG RELEASE	26
-	1	1	1	1	1	1	1	240792-1	DRAG, TERMINAL	25
-	1	1	1	1	1	1	1	1-690487-7	GUIDE, STRIP (FRONT)	24
-	1	1	1	1	1	1	1	980371-4	SCR,SHC SHLD	23
-	1	-	1	1	-	1	-	690472-6	STRIPPER	22
-	1	1	1	1	1	1	1	1-18023-1	SCR,SHC (M4X10) STRIPPER	21
-	4	4	4	4	4	4	4	18025-2	WASHER, LOCK (M4) STRIPPER	20
-	-	1	-	-	1	-	-	690472-5	STRIPPER	19
-	1	1	1	1	1	1	1	2-690518-9	HOLDER, TERMINAL	18
-	1	-	-	1	-	1	-	1338684-1	HOLDER, SHEAR, FRONT (NO-CUT)	17
-	2	2	2	2	2	2	2	18023-2	SCR,SHC (M3X6) REAR SHEAR PL	16
-	1	1	1	1	1	1	1	1-690691-1	PLATE, SHEAR (REAR)	15
-	-	1	1	-	1	1	-	1320920-1	HOLDER, SHEAR, REAR (CUT)	14
-	1	1	1	1	1	1	1	690463-1	SHEAR, FLOAT (REAR)	13
-	2	2	2	2	2	2	2	5-22280-0	SPRING, SHEAR	12
-	2	2	2	2	2	2	2	356885-4	STOP, SHEAR	11
-	-	1	1	-	1	1	1	1320921-1	HOLDER, SHEAR, FRONT (CUT)	10
-	1	1	1	1	1	1	1	462006-1	SHEAR, FLOAT (FRONT)	9
1	2	2	2	1	1	1	1	3-1333201-6	ANVIL	8
-	1	1	1	1	1	1	1	4-240641-6	SPACER, DEPRESSOR (REAR)	7
-	1	1	1	1	1	1	1	690468-2	DEPRESSOR, SHEAR (REAR)	6
-	1	1	1	1	1	1	1	2-455889-0	DEPRESSOR, SHEAR (FRONT)	5
-	1	1	1	1	1	1	1	238011-7	SPACER, BLOCK CRIMPER	4
1	2	2	2	1	1	1	1	8-456135-3	CRIMPER, INSULATION	3
										2
1	2	2	2	1	1	1	1	2-456402-5	CRIMPER, WIRE	1
-77	-76	-72	-71	-6	-2	-1		PART NO	DESCRIPTION	ITEM NO
								← REVISION OF EACH ASSY NO (WHEN BLANK, USE DWG REVISION)		
								PARTS LIST		
								QTY	REQD	PFR ASSY

# Mouser Electronics

Authorized Distributor

Click to View Pricing, Inventory, Delivery & Lifecycle Information:

[TE Connectivity:](#)

[1426254-2](#)