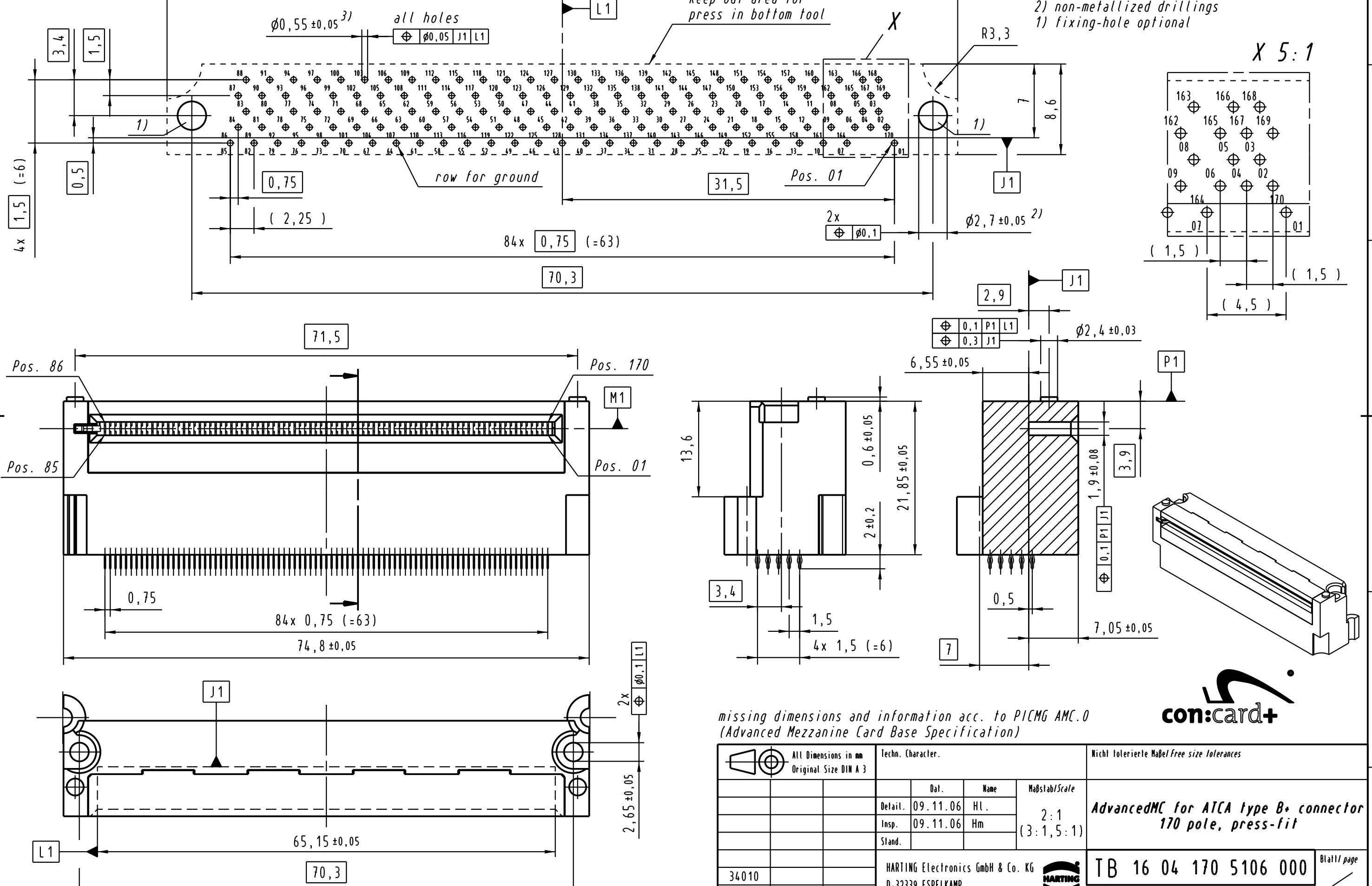


**Board Layout**  
3:1

3) recommended drill hole dia.:  $\phi 0,64 \pm 0,01$   
through hole dia. (after plating):  $\phi 0,55 \pm 0,05$   
(acc. to IEC 60352-5)

2) non-metallized drillings  
1) fixing-hole optional



Alle Rechte vorbehalten. All rights reserved

missing dimensions and information acc. to PICMG AMC.0  
(Advanced Mezzanine Card Base Specification)



|   |                   |      |  |   |  |
|---|-------------------|------|--|---|--|
| All Dimensions in mm<br>Original Size DIN A 3 | Techn. Character. |      |  | Nicht tolerierte Maßel Free size tolerances |  |
|   | Mod.              | Dat. | Name   | Dat.  | Name   |
| 34010   |                   |      | 09.11.06   | HL.   | Maßstab/Scale<br>2:1<br>(3:1, 5:1)   |
|   |                   |      | 09.11.06   | Hm  |  |
|   |                   |      |  |   | <b>AdvancedMC for ATCA type B+ connector</b><br><b>170 pole, press-fit</b> |
|   |                   |      | HARTING Electronics GmbH & Co. KG<br>D-32339 ESPELKAMP |   | <b>TB 16 04 170 5106 000</b>   |
|   |                   |      |  |   | Blatt/page<br>Sub.   |