

4

3

2

1

THIS DRAWING IS UNPUBLISHED.

RELEASED FOR PUBLICATION

© COPYRIGHT

ALL RIGHTS RESERVED.

LOC

DIST


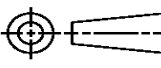
REVISIONS

P	LTR	DESCRIPTION	DATE	DWN	APVD
	B1	ECR-14-007044	22MAY2014	GK	HMR

REPLACED BY OCEAN STYLE APPLICATOR PART
NUMBER 2266265-2

FOR REPLACEMENT PARTS FOR APPLICATOR 1385409
REFER TO ADDITIONAL PAGE(S). SPARE PARTS KIT (IF LISTED)
WILL REMAIN AVAILABLE.

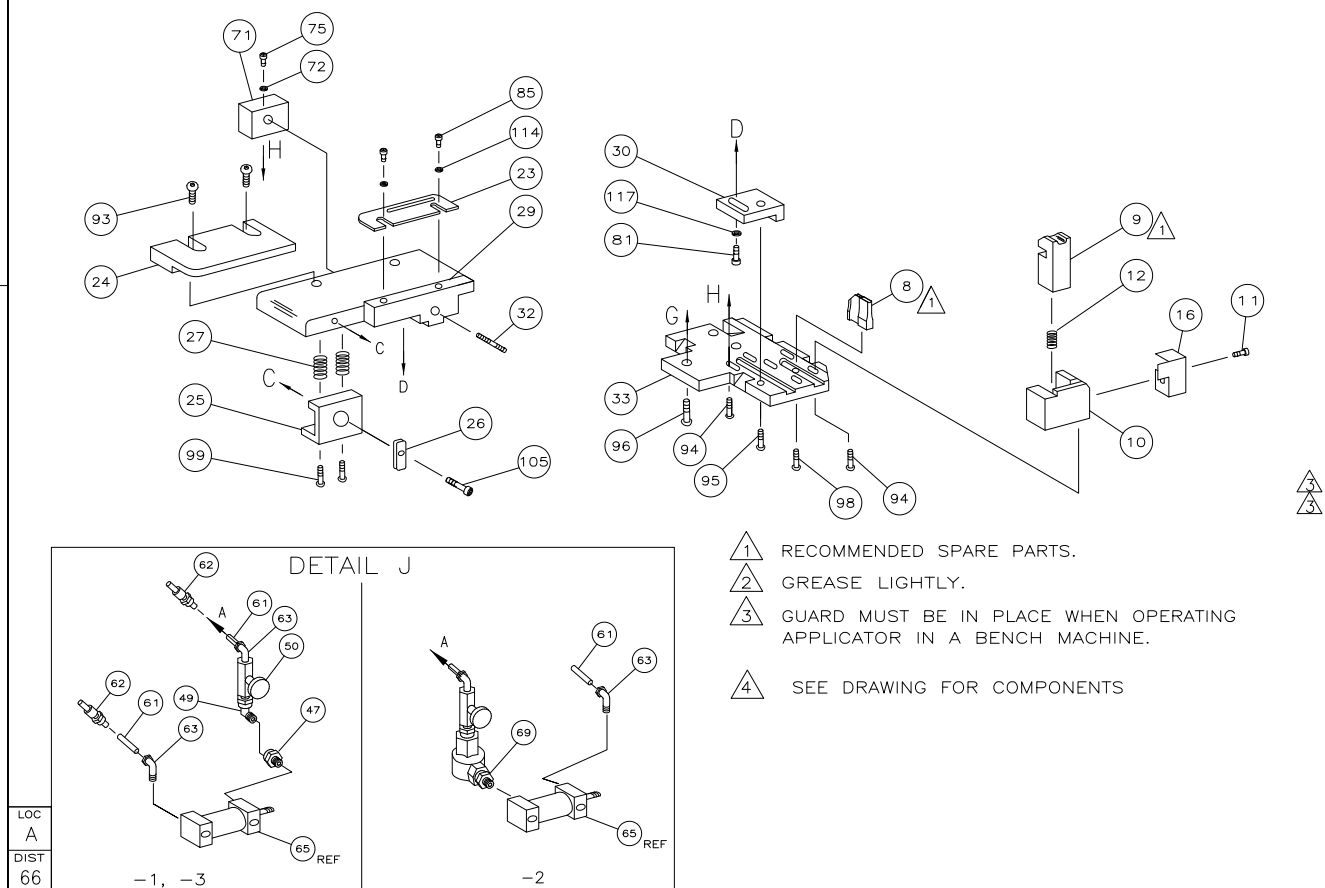
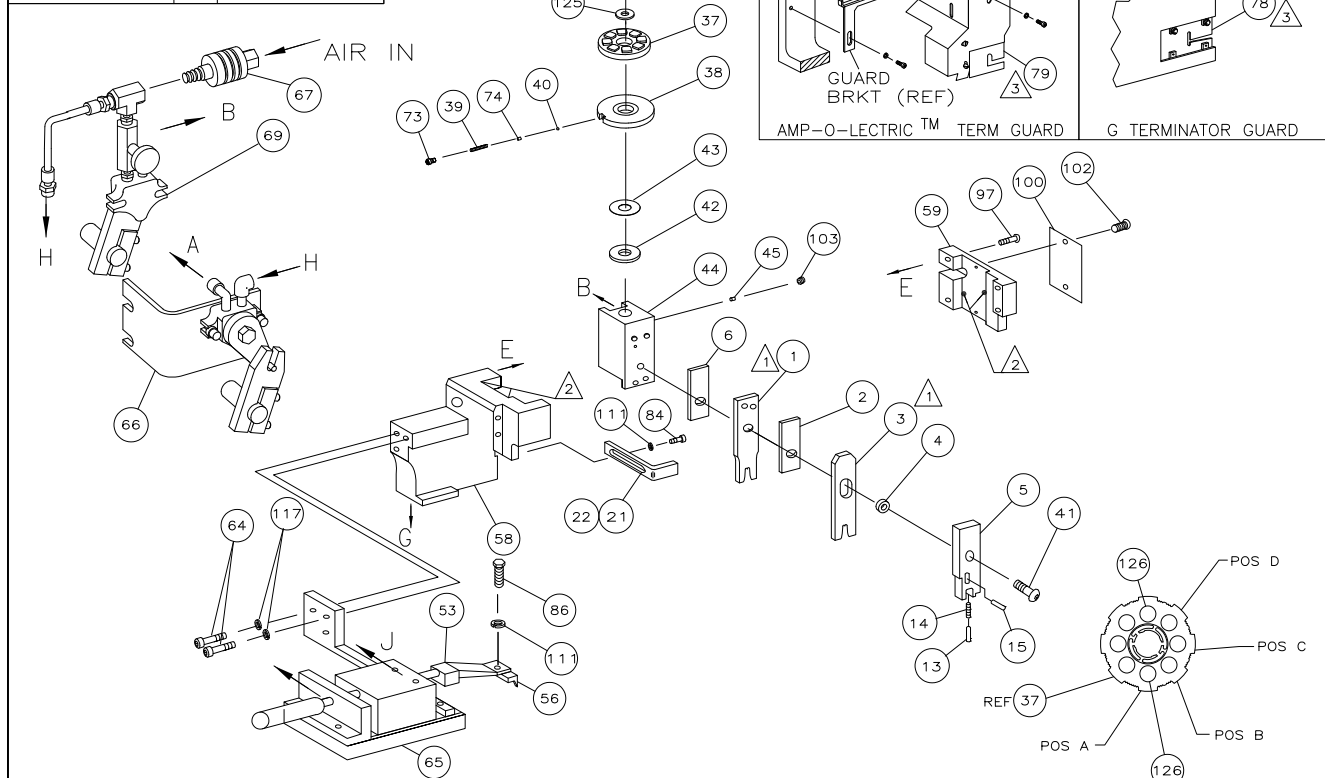
THE REPLACEMENT OCEAN STYLE APPLICATOR HAS THE
SAME TERMINATOR/PRESS INTERFACE AS APPLICATOR
1385409

THIS DRAWING IS A CONTROLLED DOCUMENT.		DWN GOPALAKRISHNA HV		 TE Connectivity			
DIMENSIONS:		CHK RAGHAVENDRA					
		APVD RAGHAVENDRA		NAME SIDE FEED HDM APPLICATOR			
		PRODUCT SPEC					
		APPLICATION SPEC					
MATERIAL		WEIGHT		SIZE A3	CAGE CODE	DRAWING NO C- 1385409	RESTRICTED TO
FINISH		CUSTOMER DRAWING		SCALE		SHEET 1 OF 2	REV B1

THIS DRAWING IS UNPUBLISHED. RELEASED FOR PUBLICATION 2002

© COPYRIGHT 2002 BY AMP INCORPORATED. ALL RIGHTS RESERVED.

PART NUMBER	REV	FIRST USED
1385409-1	B	122500-1
1385409-2	B	565435-5
1385409-3	B	354500-1



TERMINAL NAME: 1.00MM SH CONNECTOR											
AMP TERM PN		MFR TERM PN		JST TERMINAL		CUSTOMER		CRIMP SPECS			
773749		SZH-002T-P0.5		PAD LTR		CRIMP HEIGHT		WIRE SIZE			
				A	.023 ±.001	[0.58 ±0.02mm]			26		
				B	.021 ±.001	[0.53 ±0.02mm]			28		
				C		NOT			USED		
				D		NOT			USED		
				CRIMP		SIZE		TYPE		RANGE	
				WIRE	.039	[0.99mm]		F		26-28	
				INSUL	.038	[0.95mm]		F		.031-.043	
WIRE STRIP LENGTH .034-.049		TERM APPL SPEC NONE		FEED .243		APPL INSTRUCTION 408-8040		SET UP GAGE 458637-1		LAYOUT I2655	
											129
											128
2	2	2	-	C	3-354779-2	PIN, WIRE DISC (.3150)	B				127
2	2	2	-	C	2-354779-8	PIN, WIRE DISC (.3130)	A				126
1	1	1	-	A	986950-1	WASHER, FLAT PRECISION					125
1	1	1	-	A	217238-1	GENERAL INSTRUCTION PACKAGE					124
1	1	1	-	-	4088040	SF APPL INST 408-8040					123
											122
1	1	1	-	A	4-21028-0	PIN,SLT SPR(Ø.093x.75)ST	GDE PL				121
											120
											119
											118
3	3	3	-	A	21024-5	WASHER, LOCK(#10)ADJ	BLOCK				117
											116
											115
2	2	2	-	A	21024-2	WASHER,LOCK(#4)FRONT	STP GUIDE				114
											113
											112
2	2	2	-	A	21024-4	WASHER,LOCK(#8)STRIPPER					111
											110
											109
											108
											107
											106
1	1	1	-	A	22353-8	SCR, SHLD (Ø187x.25)	DRAG LEVER				105
1	1	-	-	A	992031-1	PIN, CLEVIS					104
1	1	1	-	A	21009-2	SCR,SKT SET(1/4-20x.25	LW)RAM				103
2	2	2	-	A	21017-2	SCR,DRIVE(#2x.19)ID	PLATE				102
											101
1	1	1	-	B	461264-1	PLATE, IDENTIFICATION					100
2	2	2	-	A	3-21002-0	SCR,BHC(10-32x.88)DRAG					99
1	1	1	-	A	22733-8	SCR,BHC(8-32x.38	LW)ANVIL				98
4	4	4	-	A	2-21002-9	SCR,BHC(10-32x.75)CAP					97
3	3	3	-	A	2-22733-8	SCR,BHC(1/4-20x.62)HSG					96
1	1	1	-	A	2-21002-7	SCR,BHC(10-32x.50)SG	ADJ BLK				95
6	6	6	-	A	2-21002-2	SCR,BHC(8-32x.50)TERM	H DWN				94
2	2	2	-	A	2-21002-1	SCR,BHC(8-32x.38)R	STP GDE				93
											92
											91
											90
1	1	-	-	A	7-21000-9	SCR,SHC(4-40x.19)STRIPPER					89
											88
											87
1	1	1	-	A	2-22603-1	SCR,HEX HD(8-32x.38)FEED	FINGER				86
2	2	2	-								

	-1	LEADMAKER				AIRFEED					
	-2	BENCH	MODEL	K		AIRFEED					
	-3	BENCH	MODEL	G		AIRFEED					
A	-	1	-	-	C	455350-1	AIR BLAST ASSEMBLY	70			
								69			
	-	REF	-	-	A	24042-2	VALVE, SHUT OFF	68			
A	-	1	-	-	C	692655-1	AIR FEED VALVE ASSY	67			
A	1	1	1	-	B	1633030-1	AIR FEED ASSEMBLY	66			
	2	2	2	-	A	3-21000-7	SCR,SHC(10-32x.75)AIR ASSY	65			
	2	1	2	-	A	980285-2	ELBOW, SWMEL 1/8 NPT - 1/4 T	64			
	2	-	2	-	A	23238-1	QUICK DISCONNECT	63			
	48.00	21	48.00	IN	A	27319-4	TUBING, POLY-FLO Ø.25	62			
								61			
	1	1	1	-	C	454220-8	CAP, RAM	60			
	1	1	1	-	D	454485-7	HOUSING	59			
								58			
	1	1	1	-	B	1-694433-5	PAWL, FEED	57			
								56			
								55			
A	1	1	1	-	B	461062-2	FEED FINGER ASSY	54			
								53			
								52			
								51			
								50			
								49			
	1	-	1	-	A	22374-7	VALVE, QUICK EXHAUST	48			
	1	-	1	-	A	22304-1	NIPPLE, HEX 1/8 NPT	47			
								46			
	1	1	1	-	A	690191-1	PLUG, NYLON	45			
	1	1	1	-	C	1-455673-0	RAM	44			
	1	1	1	-	A	690125-1	WASHER, LAMINATED	43			
	1	1	1	-	A	690124-4	WASHER, RAM	42			
	1	1	1	-	A	7-21002-9	BOLT, CRIMPER(5/16x1.00)	41			
	1	1	1	-	A	23241-6	BALL, STEEL	40			
	1	1	1	-	A	690170-1	SPRING, COMPRESSION	39			
	1	1	1	-	C	690142-4	DISC, INSULATION	38			
	1	1	1	-	D	354777-1	WIRE DISC, PLASTIC	37			
	1	1	1	-	A	22480-5	WASHER, SPRING	36			
	1	1	1	-	B	690212-1	POST, RAM	35			
								34			
	1	1	1	-	D	1633017-1	PLATE, BASE	33			
	1	1	1	-	A	1633031-1	SCREW, ADJUSTMENT	32			
								31			
	1	1	1	-	B	1633014-1	BLOCK, STRIP GUIDE ADJ	30			
	1	1	1	-	C	1633016-1	PLATE, STRIP GUIDE	29			
								28			
	2	2	2	-	A	22281-8	SPRING, DRAG	27			
	1	1	1	-	B	240793-1	LEVER, DRAG RELEASE	26			
	1	1	1	-	B	679754-2	DRAG, TERMINAL	25			
	1	1	1	-	D	1633013-2	GUIDE, STRIP (REAR)	24			
	1	1	1	-	A	1633015-1	GUIDE, STRIP (FRONT)	23			
	-	-	1	-	B	690472-2	STRIPPER	22			
	1	1	-	-	B	2-1338987-8	STRIPPER	21			
								20			
								19			
								18			
								17			
	1	1	1	-	B	318563-1	GUARD, CHIP, FRONT	16			
	1	1	1	-	A	21028-2	PIN SLOTTED SPRING	15			
	1	1	1	-	A	1-22278-0	SPRING COMPRESSION	14			
	1	1	1	-	A	854769-1	INSULATION HOLDER	13			
	1	1	1	-	A	5-22280-0	SPRING, SHEAR	12			
	1	1	1	-	B	690461-1	STOP, SHEAR	11			
	1	1	1	-	C	690459-1	HOLDER, SHEAR (FRONT)	10			
	1	1	1	-	C	1-462006-7	SHEAR, FLOAT (FRONT)	9			
	1	1	1	-	C	5-805887-4	ANVIL	8			
								7			
	1	1	1	-	C	2-455888-4	SPACER, CRIMPER	6			
	1	1	1	-	C	854772-8	DEPRESSOR, SHEAR (FRONT)	5			
	1	1	1	-	B	2-238011-8	SPACER, BLOCK CRIMPER	4			
	1	1	1	-	C	1633022-2	CRIMPER, INSULATION	3			
	1	1	1	-	C	455888-4	SPACER, CRIMPER	2			
	1	1	1	-	C	1633021-2	CRIMPER, WIRE	1			
	-3	-2	-1	U/M	DWG SIZE	PART NO	DESCRIPTION	ITEM NO			
					← REVISION OF EACH ASSY NO (WHEN BLANK, USE DWG REVISION) →						
	QTY REQD PER ASSY				PARTS LIST						
	DIMENSIONS IN INCHES. DO NOT SCALE PRINT. TOLERANCES UNLESS OTHERWISE SPECIFIED: 2 PLC DEC ±.25 3 PLC DEC ±- 4 PLC DEC ±- ANGLES ±- SURF TEXTURE: ✓ REMOVE BURRS, BREAK SHARP EDGES R.015 MAX				MATL	-	HT TR	-	FIN	-	
					DR	19APRIL02	APP	19APRIL02			
					C.REICHELDERFER	T.ELBIN					
					CHK	-	REL	-			
					NAME	SIDE FEED HDM APPLICATOR				MACHINE REF	
					SCALE	-	D	DWG NO	1385409	SHEET	1 OF 1
									REV	B	
MAR19 03T02 SEP102 JULY02 DATE	CAGE CODE 00779				CUSTOMER AND ASSEMBLY DRAWING						RESTRICTED TO

Mouser Electronics

Authorized Distributor

Click to View Pricing, Inventory, Delivery & Lifecycle Information:

[TE Connectivity:](#)

[1385409-2](#)