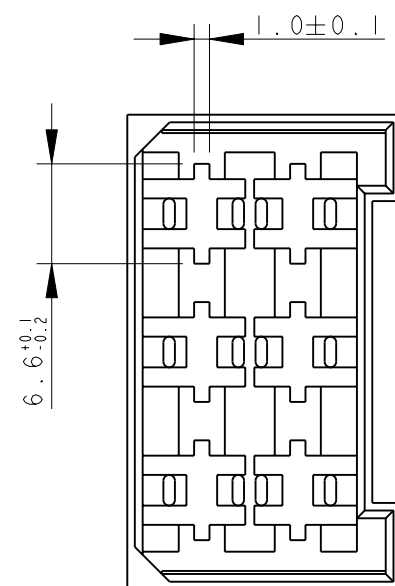
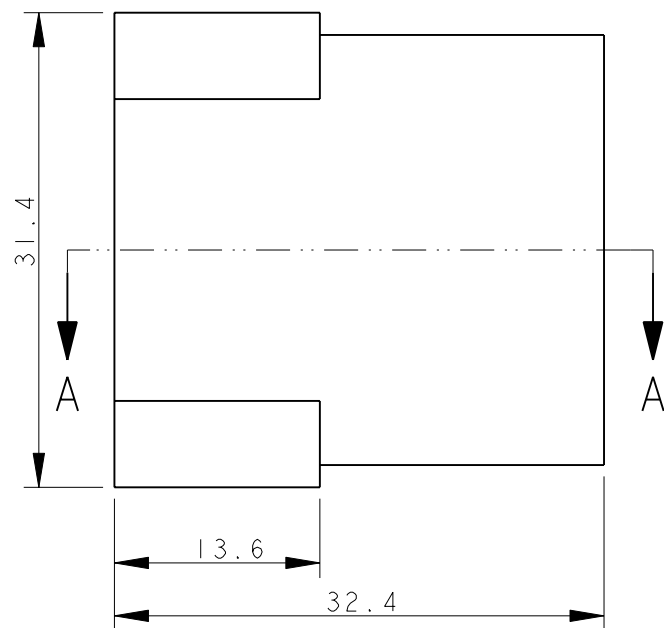
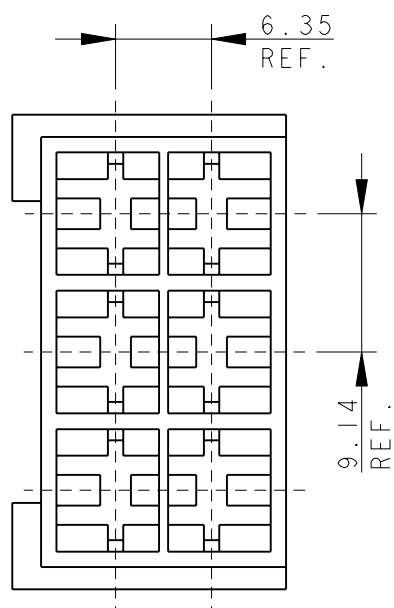


LOC IR DIST -

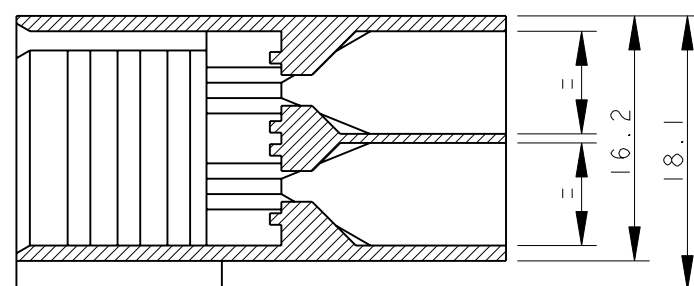
REVISIONS

P	LTR	DESCRIPTION	DATE	DWN	APVD
	AL	REDRAWN AND UPDATED, ECR-06-009404	02 MAY 2006	HY	GT
	AL1	REVISED PER ECO-09-026346	26NOV09	KK	AEG
	AL2	ECR-10-022530	14JUN11	KK	HMR
	AL3	PN 2-180906-0 RE-ACTIVATED	05MAR2012	PKS	RRP

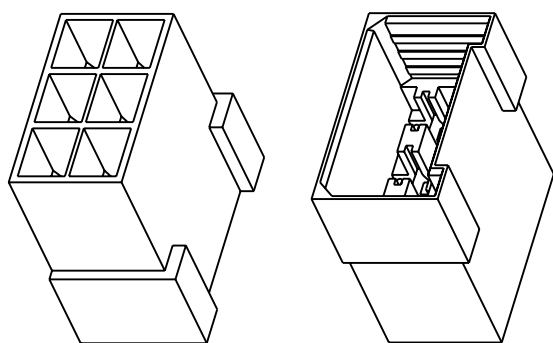


- ① PA 6.6 UNFILLED, UL 94-V2
- ② PA 6.6 UNFILLED UL 94 V0 & ACCORDING TO IEC 60335-1 NORM.
- ③ PA 6.6 20% GLASS FIBER FILLED, TECHNYL A 216 V20.
- ④ OBSOLETE PARTS: OBSOLETE CIS STREAMLINING PER D.RENAUD/D.SINISI

SECTION A - A



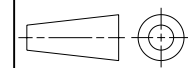
NOTE	COLOUR	MATERIAL	TE P/N	REV
④ OBSOLETE	NATURAL	①	4-180906-0	AK
	NATURAL	③	3-180906-0	AK
	NATURAL	②	2-180906-0	AL
	ORANGE		0-180906-9	AK
④ OBSOLETE	VIOLET		0-180906-8	AK
	BROWN		0-180906-6	AK
	BLACK		0-180906-5	AK
④ OBSOLETE	YELLOW	①	0-180906-4	AK
	BLUE		0-180906-3	AK
	GREEN		0-180906-2	AK
	RED		0-180906-1	AK
	NATURAL		0-180906-0	AK



SCALE 1:1

THIS DRAWING IS A CONTROLLED DOCUMENT.

DIMENSIONS: mm



TOLERANCES UNLESS OTHERWISE SPECIFIED:

0 PLC	±0.3
1 PLC	±0.3
2 PLC	±0.3
3 PLC	±0.3
4 PLC	±0.3
ANGLES	±2°
FINISH	-

MATERIAL SEE TABLE

DWN H. YAALI 18APR2006
 CHK H. YAALI
 APVD G. TURCO
 PRODUCT SPEC 108-20020
 APPLICATION SPEC -
 WEIGHT -



NAME FASTIN-FASTON Connector, 6.3 mm series TAB HOUSING 6 WAY

SIZE A3	CAGE CODE -	DRAWING NO C-180906	RESTRICTED TO -
---------	-------------	---------------------	-----------------

CUSTOMER DRAWING SCALE 2:1 SHEET 1 OF 1 REV AL3

Mouser Electronics

Authorized Distributor

Click to View Pricing, Inventory, Delivery & Lifecycle Information:

[TE Connectivity:](#)

[180906](#)