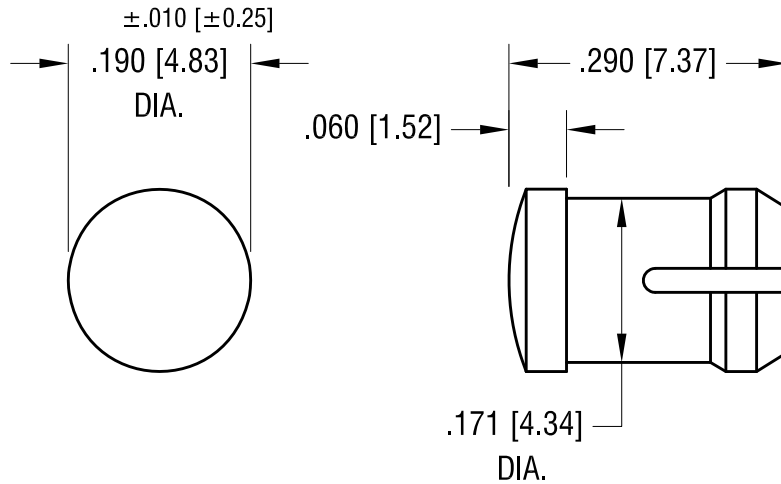


THIS DOCUMENT IS THE PROPERTY OF  
KEYSTONE ELECTRONICS CORP. AND  
SHALL NOT BE REPRODUCED, DISTRIBUTED  
OR USED AS A BASIS FOR MANUFACTURE  
WITHOUT PRIOR WRITTEN PERMISSION  
FROM KEYSTONE ELECTRONICS CORP.

ACTUAL SIZE



**NOTE:**

1. MOUNTING:  $\pm .002$  [ $\pm 0.05$ ]  
MOUNTS IN A .171[4.34] DIA. PANEL HOLE  
ON .250 [6.35] CENTER.  
PANEL THICKNESS .063 [1.60] TO .125 [3.17]  
PANEL HOLE SHOULD BE DEBURRED, BUT NOT CHAMFERED.
2. ASSEMBLY:  
INSERT LENS THROUGH PANEL HOLE ,  
AND INSERT LED INTO LENS

| PART NO. | COLOR  |
|----------|--------|
| 8656     | RED    |
| 8657     | GREEN  |
| 8658     | YELLOW |
| 8659     | CLEAR  |

|  |  |                |                             |
|--|--|----------------|-----------------------------|
| <b>KEYSTONE ELECTRONICS CORP.</b>  |  |                |                             |
| www.keyelco.com • ASTORIA, N.Y. 11105-2017 • Tel (718) 956-8900              |  |                |                             |
| PART NAME<br>LED ROUND LENS CAP  |  |                |                             |
| MATERIAL<br>POLYCARBONATE  |  |                |                             |
| FINISH<br>-  | DRN BY<br>BOONE                        | DATE<br>2.9.96 |                             |
|  | APP'D<br>LN                            | SCALE<br>5X    |                             |
| TOLERANCES<br>DECIMAL<br>ANGULAR $\pm 1^\circ$<br>UNLESS OTHERWISE SPECIFIED | INCH [MM]<br>$\pm .005$ [ $\pm 0.13$ ] | CODE<br>C      | DWG NO.<br><b>8656-8659</b> |

|          |                          |      |
|----------|--------------------------|------|
| 10.10.13 | CHANGE AS PER ECN 13-098 | A    |
| DATE     | DESCRIPTION              | REV. |

# Mouser Electronics

Authorized Distributor

Click to View Pricing, Inventory, Delivery & Lifecycle Information:

[Keystone Electronics:](#)

[8658](#)