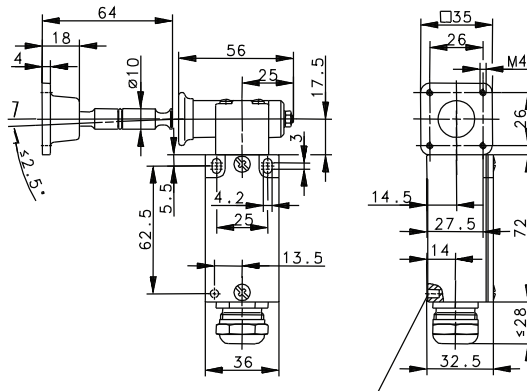


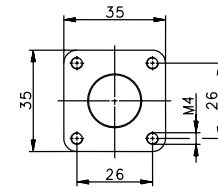
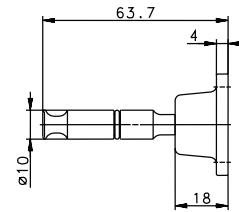
**GC-VT Series**

**GC-VT**



**Replacement actuator keys:**

VT ACTUATOR KEY  
391.2001.275



Switching Operation	Slow Action	High Activation Force	Radius Activation
<b>1 NC / 1 NO Contacts</b>	<b>612.1100.555</b> GC-U1Z VT 90 GR 	-	-
<b>1 NC Contacts</b>	-	-	-
<b>2 NC Contacts</b>	<b>611.6769.064</b> GC-AZZ VT 90 GR 	-	-
<b>2 NC / 1 NO Contacts Overlapping</b>	-	-	-

**Technical Information**

	Slow Action	High Activation Force	Radius Activation
Maximum Switching Voltage	240V		
Max. Switching Amps (up to)*	10A		
B10d (up to)*	20 Million		
Mechanical Service Life (up to)*	10 x 10 <sup>6</sup>		
Switching Frequency	≤ 30/min		
Operating Temperature	-30 °C to +80 °C		
Protection Rating	IP65		
Utilization Category (up to)*	AC-15, Ue/Ue 240V 3A		
Rate Insulation Voltage	400VAC		

Approvals



\* Depending on switching system - see technical information for details

# Mouser Electronics

Authorized Distributor

Click to View Pricing, Inventory, Delivery & Lifecycle Information:

[Altech:](#)

[612.1100.555](#) [601.6269.104](#)