

Contact assignment:

- 1) brown
- 2) white
- 3) blue
- 4) black
- 5) green-yellow

Contact assignment:

- 1) white
- 2) brown
- 3) green
- 4) yellow
- 5) grey
- 6) pink
- 7) blue
- 8) red

Technical specification:

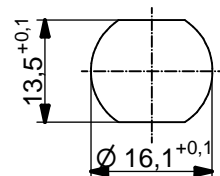
| | | | |
|-------------------------------------|---------------------------|---------------------|--------------|
| Rated voltage: IEC 61076-2-101 | 4pos 250 V | 5pos 60 V | 8pos 30 V |
| Current rating: IEC 61076-2-101 | 4/5pos 4 A at 40°C | 8pos 2 A at 40°C | |
| Insulation resistance: IEC 60512 | >=100 MΩ | | |
| Pollution degree: IEC 60664-1 | 3/2 | | |
| Degree of protection: IEC 60529 | IP 67, in mated condition | | |
| Temperature range: | -30°C ... +85°C | | |
| Mating cycles: IEC 60512-9a | >=100 | | |

Materials:

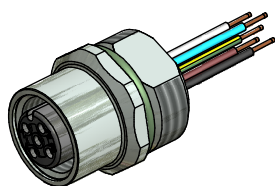
| | |
|------------------|---------------------------|
| Contact: | CuZn |
| Contact plating: | Nickel, gold plated |
| Contact carrier: | PBT GF, UL 94 |
| Sealing: | FPM |
| Socket housing: | CuZn, nickel plated |
| Grouting: | Polyurethane-resin, UL 94 |

Installation specification:

| | |
|--------------------------|---|
| recommended torque: | 1-1,2 Nm |
| Conec installation tool: | Torque wrench: 36-000200 Insert across flats 17: 36-000230 |



Minimum wall thickness 1,5mm, alternativ panel cut-out d=16,1



| Part no: | Description: | Pos | Length L: | Wire: |
|----------|----------------------|-----|-----------|----------------|
| 43-01000 | SAL - 12 - FK4 - 0,5 | 4 | 0,5m | AWG 24 PVC, UL |
| 43-xxxxx | SAL - 12 - FK4 - ... | 4 | x | |
| 43-01001 | SAL - 12 - FK5 - 0,5 | 5 | 0,5m | |
| 43-xxxxx | SAL - 12 - FK5 - ... | 5 | x | |
| 43-01002 | SAL - 12 - FK8 - 0,5 | 8 | 0,5m | |
| 43-xxxxx | SAL - 12 - FK8 - ... | 8 | x | |

| | | | | | |
|---|---|----------------------------------|---|--------------------------------|------|
| DO NOT ALTER CAD DRAWING BY HAND Directive 2002/95/EC RoHS compliant | Index: e 30.09.2014 rch Ä5374 Temperature range was: -30°C ... +80°C | dim. in mm | title: Female socket M12x1 with wire, frontmounting | | |
| | | | | | date |
| | tolerance of wire: L ≤ 0,5m: L + 20mm L > 0,5m: L + 4% | drawn 20.02.07 appd. 07.03.07 | Fromm Mankopf | dwg no: 43K1A213 | |
| | general tolerance: 0 ± 0,50mm 0,0 ± 0,25mm 0,00 ± 0,10mm | | | | |

THIS DRAWING MAY NOT BE COPIED OR REPRODUCED IN ANY WAY, AND MAY NOT BE PASSED ON TO A THIRD PARTY WITHOUT WRITTEN PERMISSION. OWNERSHIP AND COPYRIGHT OF CONEC GmbH

Mouser Electronics

Authorized Distributor

Click to View Pricing, Inventory, Delivery & Lifecycle Information:

[CONEC:](#)

[43-01000](#) [43-01001](#) [43-01002](#)