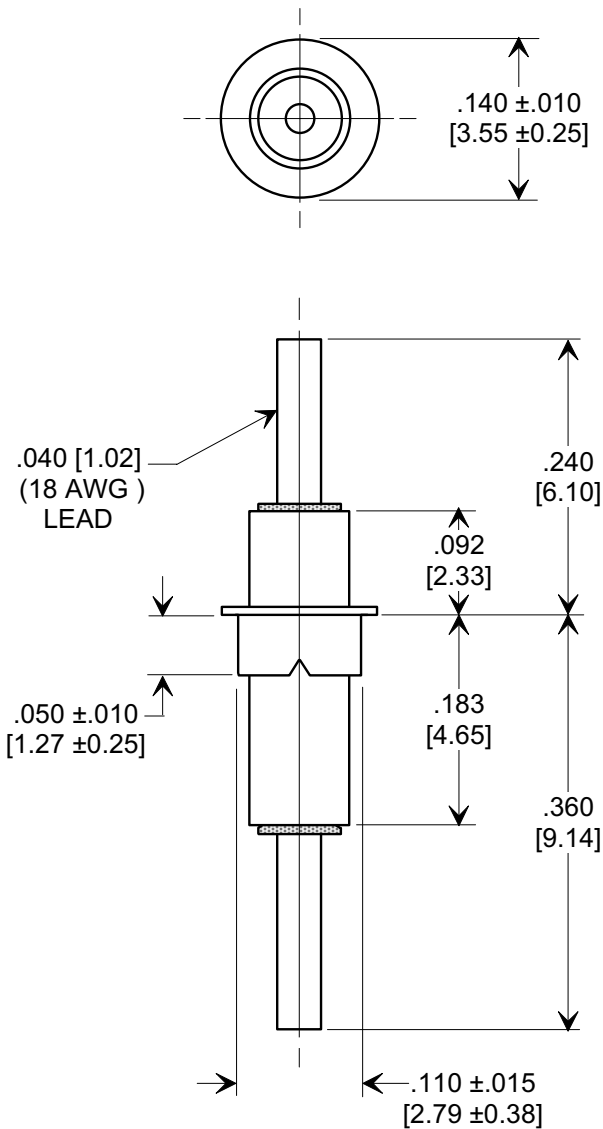
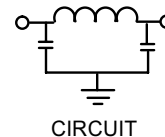
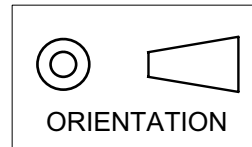


Electrical Testing
per Tusonix standard
test plans and Mil-Std-202
Test Methods.

MARKETING SALES DRAWING
DIMENSIONS IN INCHES - DO NOT SCALE THIS DRAWING
DIMENSIONS IN METRIC - []



MIN. CAP. pF	WORKING VOLTAGE		I.R. MIN. @ 100 (VDC.)	DWV (VDC)	CURRENT Idc.	MINIMUM NO LOAD INSERTION LOSS (dB) AT 25°C PER MIL-STD-220			
	85°C	125°C				10 MHz	100 MHz	1 GHz	10 GHz
3000	125	50	10 G Ω	250	15	7	50	65	60

X-2015 Rev-0	REVISION RECORD		TUSONIX TUCSON, ARIZONA	--TOLERANCES-- Unless Otherwise Specified		Title EYELET STYLE EMI FILTER	
	Original Release C.O. 2910	0		DECIMAL ± .031 [0.79]			
	RND TO COMP FMT. S.M. 07-13-00	20000717-5-07		ANGLES ±		Drawn S.M. 07-13-00	Scale 6 X
	ADDED DIM. .050, DWV & I.R. DIM. .140 WAS .138, .092 WAS .100 & .183 WAS .196. S.M. 01-08-04	20040108-2-01		A		Approved T.C. 07-13-00	4100-003

Mouser Electronics

Authorized Distributor

Click to View Pricing, Inventory, Delivery & Lifecycle Information:

[Tusonix / CTS:](#)

[4100-003LF](#)