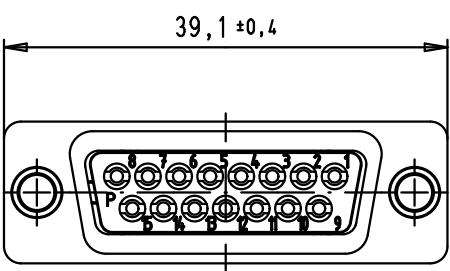
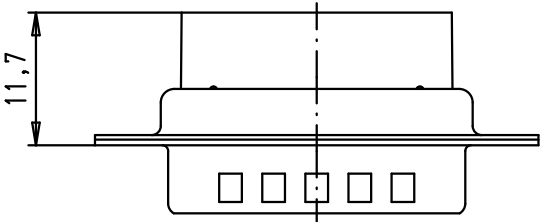
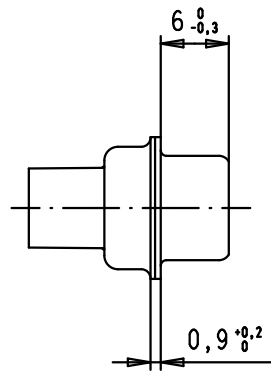
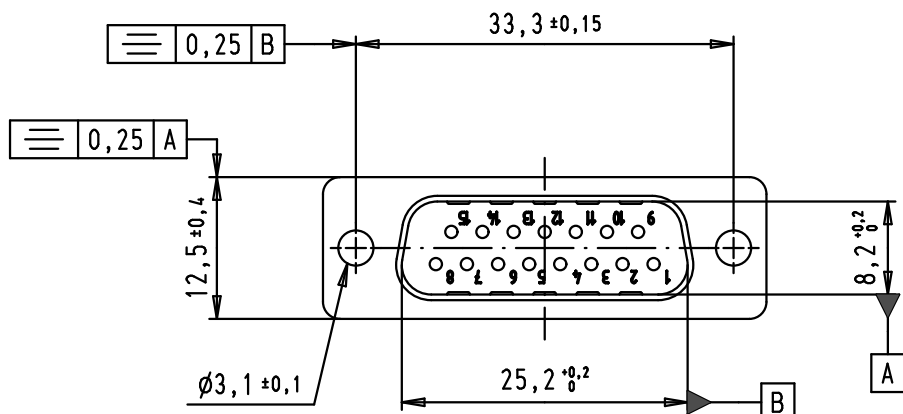
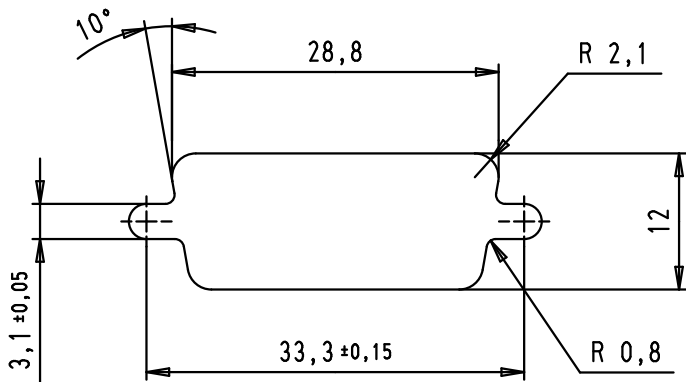




5 4 3 2 1



Panel cut out



D
C
B
A

Mod.	Dot.	Name	Dot.	Name	 All Dim. in mm Orig. Size DIN A 4	D-Sub, male, straight, 15 poles, for crimp contacts, tin plated shell with dimples	Maßstab/ Scale	
34784	14/02/08	PK	Detail.	09/04/02			CV	1,5:1
33106	22/09/05	JMDR	Insp.					
31571	12/11/03	SH	Stand.					
31526	31/07/03	TCP						
29768	09/04/02	CV	HARTING EURL F-95972 Paris			TB 09 67 015 5601	Blatt/ Page	
							Sub.	1 / 2

Mouser Electronics

Authorized Distributor

Click to View Pricing, Inventory, Delivery & Lifecycle Information:

[HARTING:](#)

[09670155601](#)