

THE INFORMATION CONTAINED IN THIS DRAWING IS THE SOLE PROPERTY OF  
BUD INDUSTRIES INC. ANY REPRODUCTION IN PART OR WHOLE WITHOUT  
THE WRITTEN PERMISSION OF BUD INDUSTRIES INC. IS PROHIBITED.

MATERIAL - ALUMINUM ALLOY #ADC-12

FINISH - NATURAL (CONTACT BUD FACTORY FOR  
ALTERNATE FINISHES)

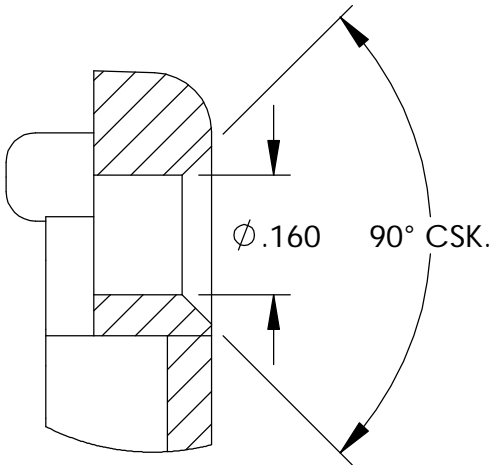
GASKET - RATED IP65 NEOPRENE, SELF-ADHESIVE,  
3mm THICK, COLOR BLACK

SCREWS - STAINLESS STEEL, M3.5 x 12mm LG.,  
CSK. HEAD, SELF-THREADING

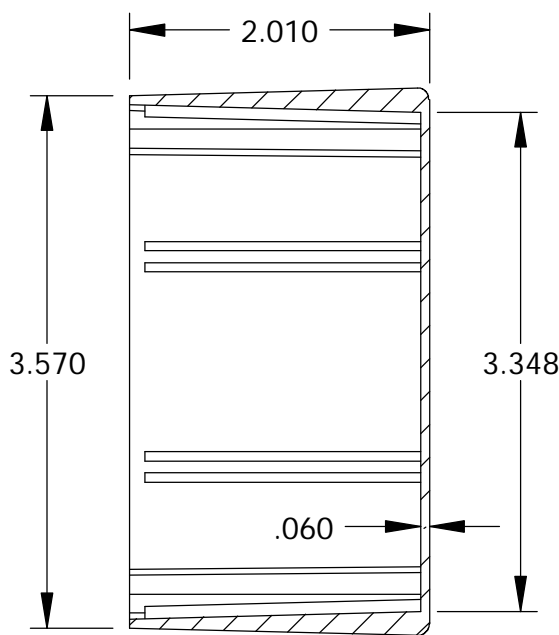
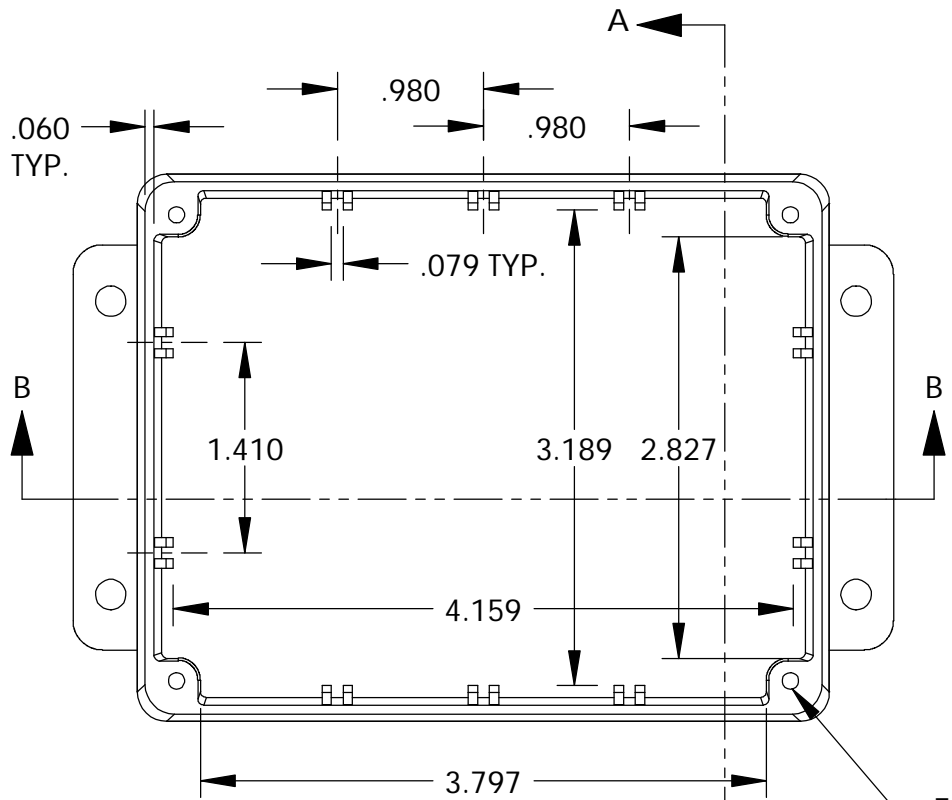
ALL HOLE DIAMETERS HAVE  $\pm .005$  TOLERANCE.

ALL OTHER DIMENSIONS HAVE  $\pm .015$  TOLERANCE.

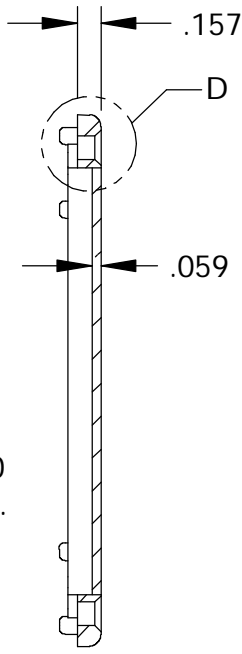
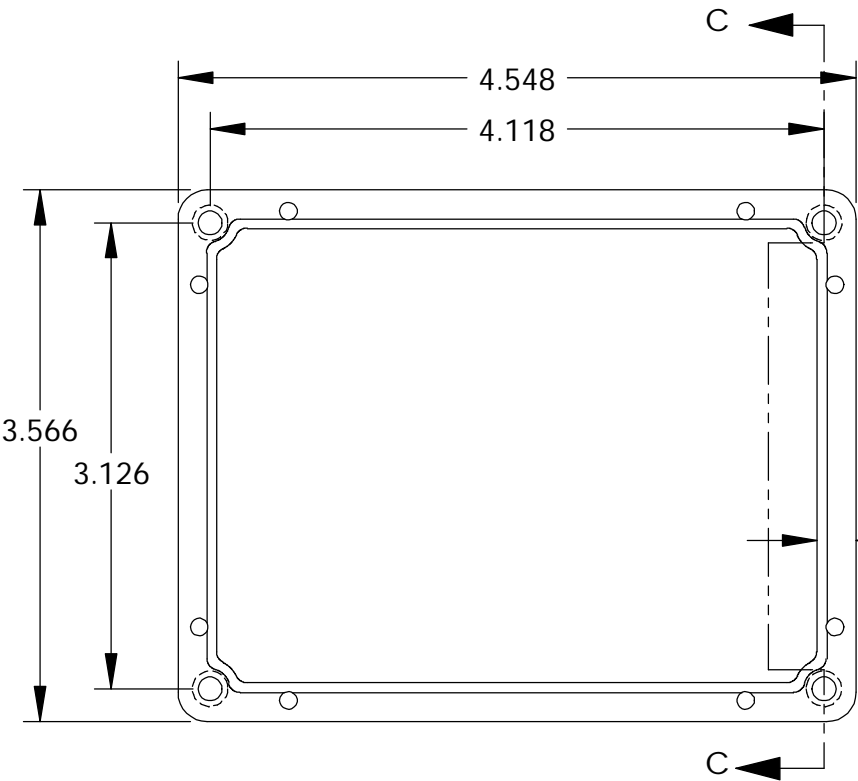
ENCLOSURES ARE SHIPPED UNASSEMBLED WITH  
ALL ITEMS SHOWN.



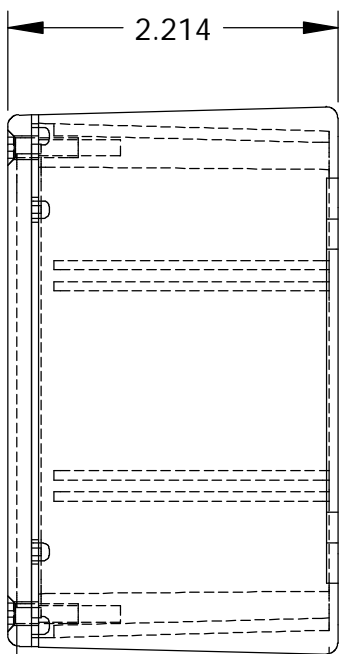
DETAIL D  
SCALE 4 : 1



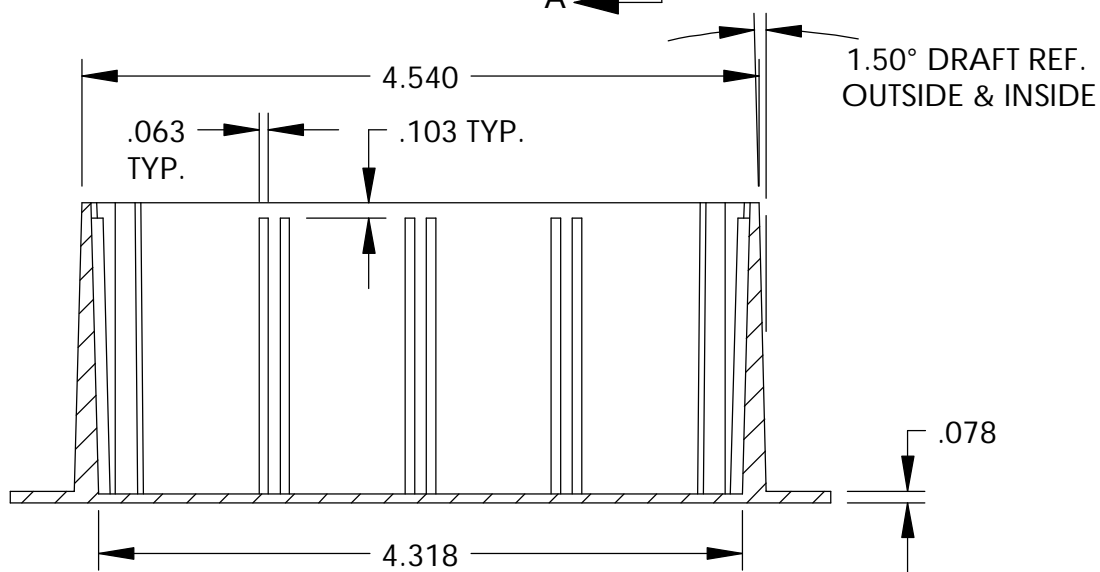
SECTION A-A



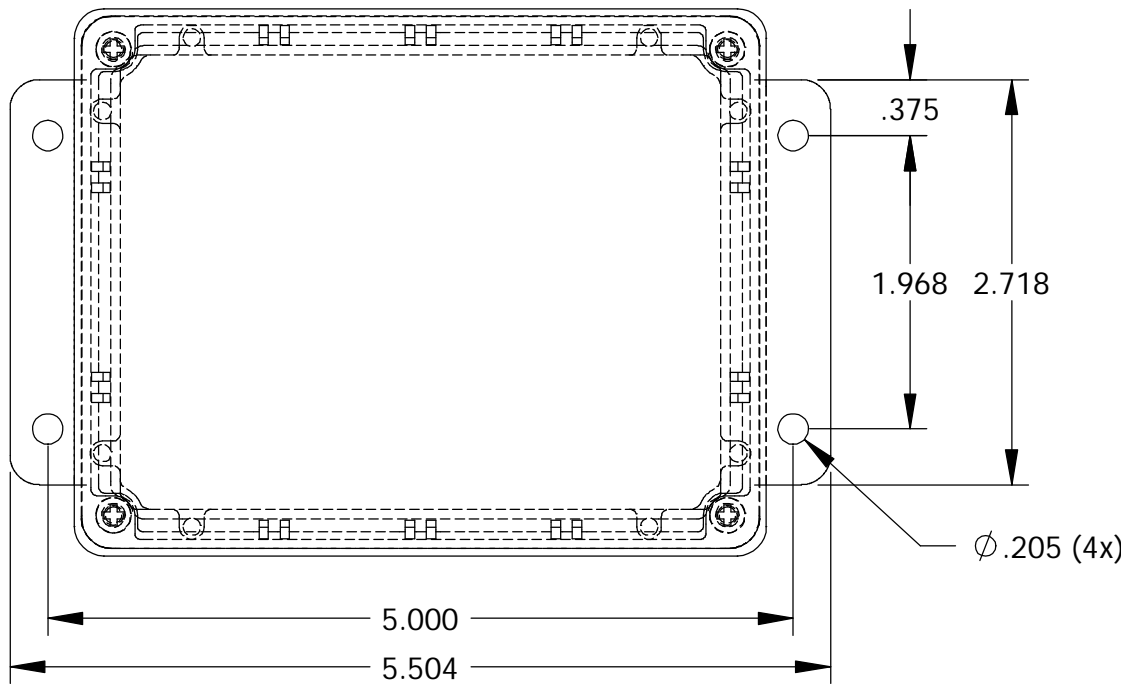
SECTION C-C



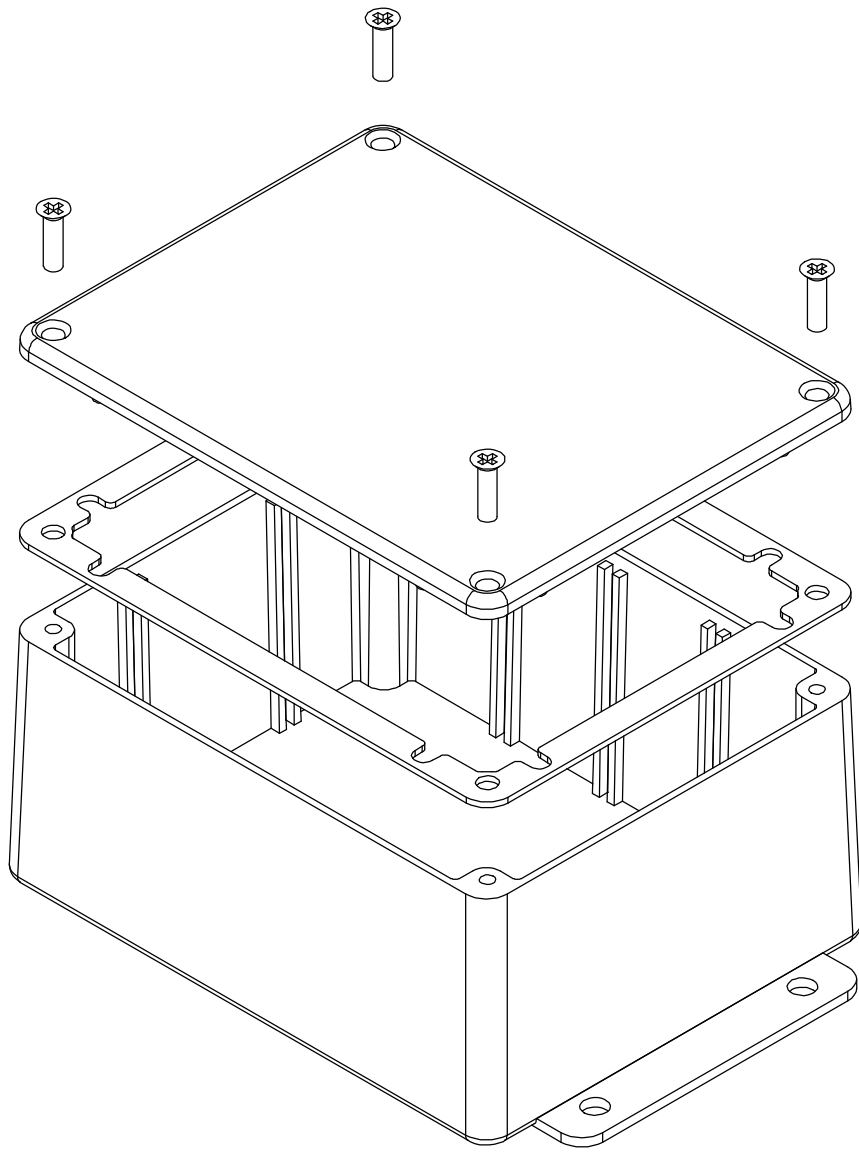
2.095 INSIDE  
CLEAR HEIGHT



SECTION B-B



BODY



COVER

PARTS LIST			
+/- .005 BETWEEN HOLE CENTERS +/- .015 FROM SHEARED EDGE +/- .032 FROM A BENT SURFACE +/- .062 BETWEEN ASSEMBLED SURFACES UNLESS OTHERWISE SPECIFIED		CAD GENERATED DRAWING. DO NOT MANUALLY UPDATE	
MATERIAL		APPROVALS	DATE
FINISH		DRAWN	4-3-06
AS NOTED		CHECKED	
AS NOTED		APPROVED	
QTY.		USED ON	DO NOT SCALE DRAWING
SCALE		CAD FILE:	SHEET 1 OF 1

BUD INDUSTRIES INC.

DIE CAST ALUMINUM  
ENCLOSURE

DWG. NO. CN-6705

REV.

# Mouser Electronics

Authorized Distributor

Click to View Pricing, Inventory, Delivery & Lifecycle Information:

[Bud Industries:](#)

[CN-6705](#)