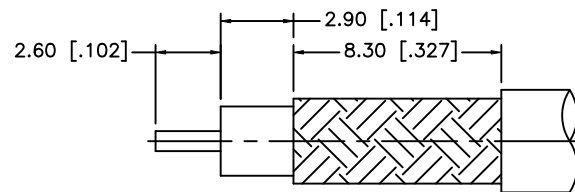
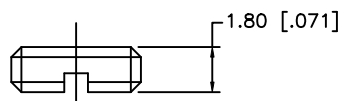
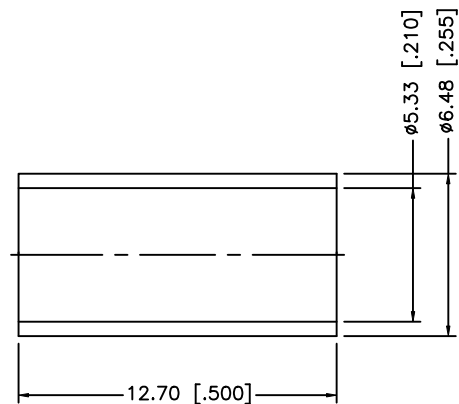
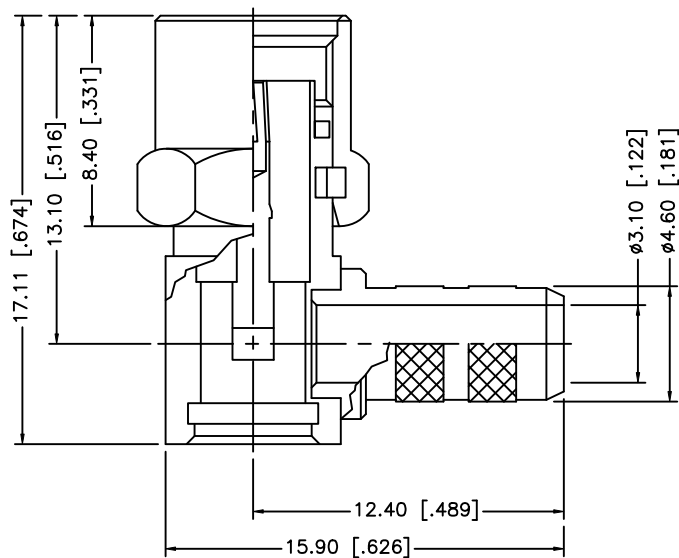


REV.	DATE	ECR NO.	DESCRIPTION
NC	03/20/98	—	INITIAL RELEASE
A	10/27/08	—	UPDATE DRAWING FORMAT



RECOMMENDED
CABLE STRIPPING DIM'S

					UNLESS OTHERWISE SPECIFIED DIMENSIONS ARE IN MILLIMETERS. DIMENSIONS IN [] ARE IN INCHES AND FOR CUSTOMER REFERENCE ONLY.	APPROVALS		DATE		Amphenol Connex				
8						DRAWN	GRS	10/27/08						
7					UNLESS OTHERWISE SPECIFIED TOLERANCES FOR MILLIMETERS ARE: 0.5 – 8mm ± 0.20mm 8 – 30mm ± 0.40mm 30 – 120mm ± 0.50mm	CHECKED				PART DESCRIPTION SMA R/A CRIMP PLUG RG–58 CABLE – MODIFIED NUT				
6						ISSUED								
5	FERRULE	COPPER	GOLD	1	UNLESS OTHERWISE SPECIFIED TOLERANCES FOR INCHES ARE: .020 – .315 = ± 0.007" .315 – 1.180 = ± 0.015" 1.180 – 4.724 = ± 0.020"	SHEET		1 OF 1		PART NO. 132122–10				
4	CONTACT PIN	BRASS	GOLD	1										
3	INSULATOR	PTFE	NATURAL	1						DWG. NO. 132122–10.DWG				
2	HOUSING	BRASS	GOLD	1					REV. NC					
1	SHELL	BRASS	GOLD	1										
	DESCRIPTION	MATERIAL	FINISH	QTY	DO NOT SCALE DRAWING	CAD FILE		C:/132/132122–10.DWG						

Mouser Electronics

Authorized Distributor

Click to View Pricing, Inventory, Delivery & Lifecycle Information:

[Amphenol:](#)

[132122-10](#)