

CLEAR HOLE MOUNTING BRACKETS

Designers' Choice



BOARD BRACKETS

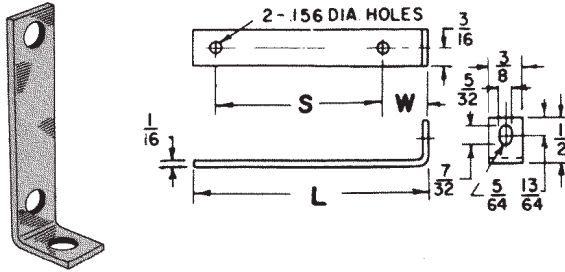
Originally designed for our line of standardized terminal boards; these brackets can also be used in other applications.

Choice of Steel or Aluminum

MATERIAL:

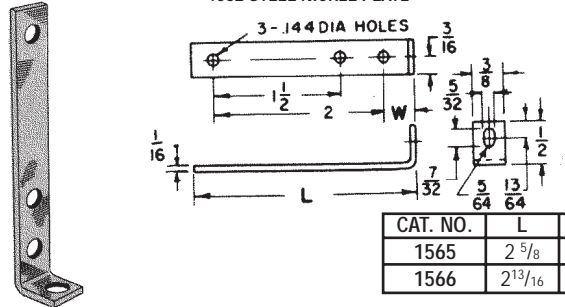
.062 Steel, Nickel Plate

.062 Aluminum



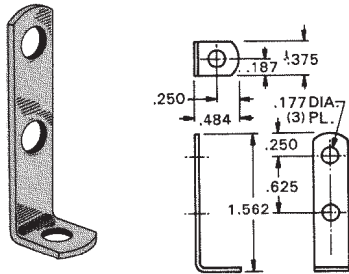
CAT. NO.		W	L	S	For Use With Board No's (see page 98)		
Steel	Alum.				15032	15072	15092
1556	622	3/8	1 5/8	1	15032	15072	15092
1567	623	3/8	2 1/8	1 1/2	15033	15073	15093
1568	624	3/8	2 5/8	2	15034	15074	15094
1569	625	3/8	3 1/8	2 1/2	15035	15075	15095
1570	626	9/32	1 3/16	3/4	15022	15024	15030
1571	627	9/32	1 5/8	1 3/16	15036	15076	15096

.062 STEEL NICKEL PLATE



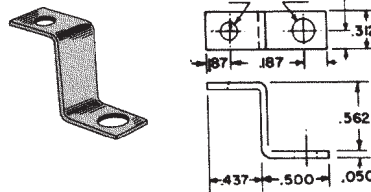
CAT. NO.	L	W
1565	2 5/8	3/8
1566	2 13/16	9/16

.062 STEEL NICKEL PLATE



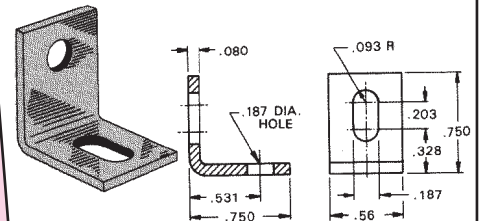
CAT. NO. 1564

.050 STEEL NICKEL PLATE



CAT. NO. 4325

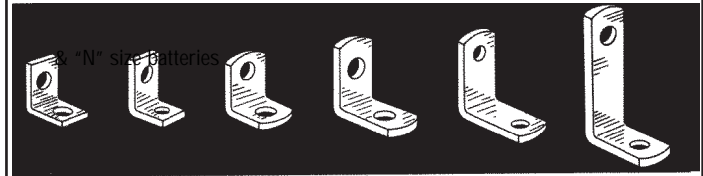
.080 ALUMINUM



CAT. NO. 4337

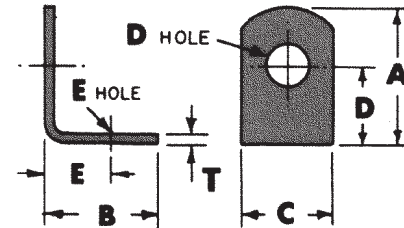
UNIVERSAL BRACKETS

A wide variety of brackets for various mounting applications.



633 613 615 618 619 620
4335 4336 4326

STANDARD BRACKETS
(Brass and Steel)



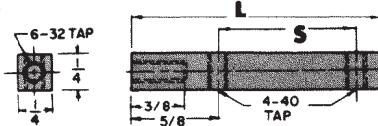
Selection of Brackets with Clear Holes

CAT. NO.	A	B	C	D	"D" Hole Dia.	E	"E" Hole Dia.	"T" Material	Finish
633	.375	.375	.281	.218	.140	.218	.140	.032 Brass	Nickel
613	.390	.453	.375	.234	.147	.299	.128	.032 Brass	Nickel
615	.420	.343	.281	.281	.144	.203	.128	.032 Brass	Tin
4335	.562	.562	.500	.412	.120	.411	.120	.062 Steel	Nickel
4336	.562	.562	.500	.412	.144	.412	.144	.062 Steel	Nickel
618	.628	.628	.375	.378	.169	.378	.169	.050 Brass	Tin
619	.687	.687	.375	.500	.144	.500	.144	.032 Steel	Tin
4326	1.013	.487	.312	.816	.140	.332	.140	.050 Steel	Nickel
620	1.156	.656	.375	.906	.169	.420	.169	.032 Steel	Tin

BOARD SUPPORT BRACKETS

MATERIAL: Brass, Zinc Plate

A sturdy support for mounting of standardized terminal boards.



CAT. NO.	Overall Length "L"	Spacing "S"
1647	2 3/8	1 1/2
1648	2 7/8	2
1649	3 3/8	2 1/2

CUSTOM STAMPING AND ASSEMBLY

Keystone is fully integrated to meet your total design & production needs.

Manufacturing custom designs & modifications of standard items is our specialty.

Quotations on special stamping & assembly furnished promptly upon receipt of sample, sketch, print or CAD drawings.

Mouser Electronics

Authorized Distributor

Click to View Pricing, Inventory, Delivery & Lifecycle Information:

[Keystone Electronics:](#)

[1649](#) [1647](#) [1565](#) [1566](#)