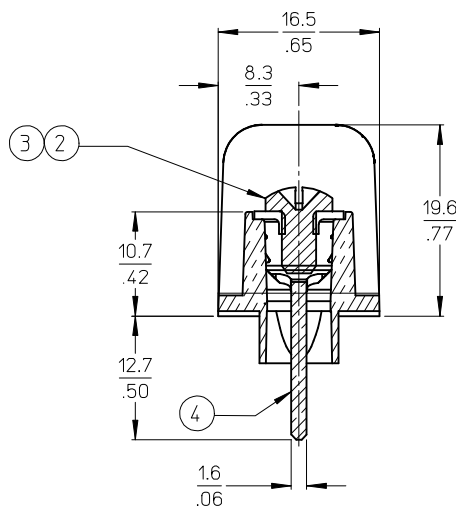
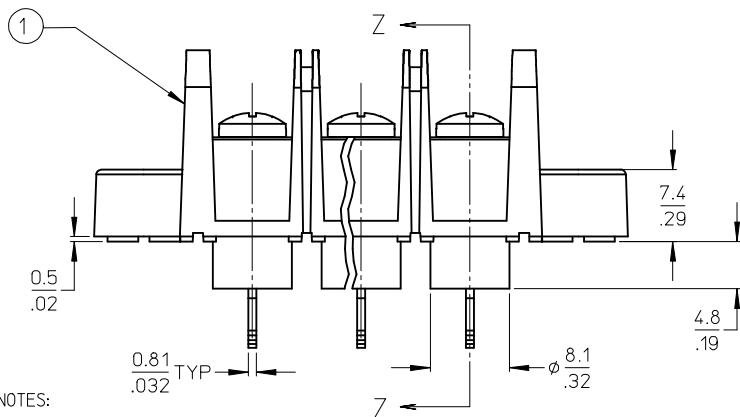
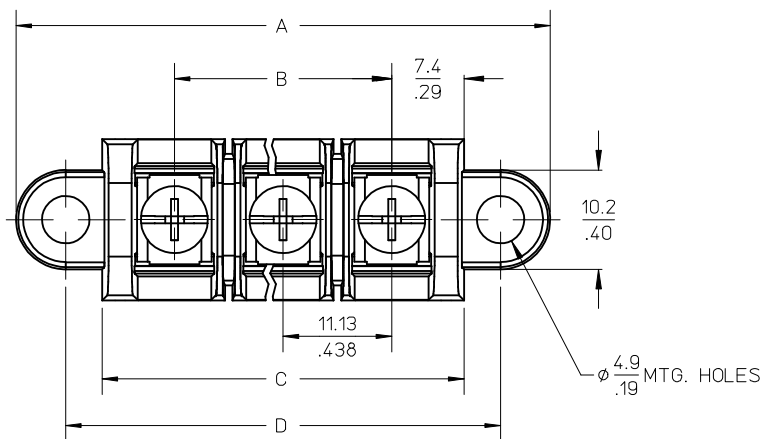
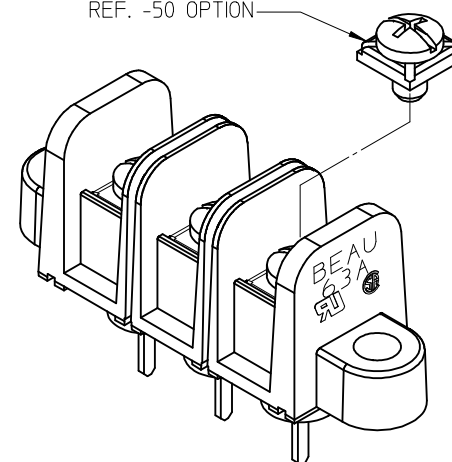


10 9 8 7 6 5 4 3 2 38630



REF. -50 OPTION



SECTION Z-Z

NOTES:

1. MATERIAL: SEE TABLE
2. FINISHES: SEE TABLE
3. PRODUCT SPECIFICATION: NOT REQUIRED
4. PACKAGING: NOT REQUIRED
5. MATES WITH: NONE
6. *XX* REFERS TO QTY. OF CIRCUITS
7. ROHS COMPLIANT (B)

4	XX	TERMINAL, WIRE WRAP, LONG, #6-32,	BRASS	TIN PLATE
3	XX	SCREW/WSHR #6-32X.250 PAN, PH-SL (-50)	STEEL (B)	ZN, CLEAR CHROMATE
2	XX	SCREW #6-32X.250 BHD, PH-SL (STD.)	STEEL (B)	ZN, CLEAR CHROMATE
1	1	BARRIER TERMINAL STRIP	(B) POLYESTER (PBT)	BLACK
ITEM	QTY.	DESCRIPTION	MATERIAL	FINISH



tb_frame_B_P_ME_T
Rev. E 2006/04/15

UPDATE MAT. DESCRIP.
EC NO: WNA2009-0085
B DRWN: JENC INAS 2008/11/25
CHKD: CYORK 2008/12/15
APPR: JMACNEIL 2008/12/15

QUALITY SYMBOLS
▽=0
▽=0

GENERAL TOLERANCES (UNLESS SPECIFIED)	
mm	INCH
4 PLACES	± .005
3 PLACES	± .01
2 PLACES	± .01
1 PLACE	± .01
ANGULAR ± 2 °	
DRAFT WHERE APPLICABLE MUST REMAIN WITHIN DIMENSIONS	

DIMENSION STYLE	
MM/IN	
DRAWN BY	DATE
R. STONE	2003/03/25
CHECKED BY	DATE
R. KEMP	2003/03/26
APPROVED BY	DATE
P. WALTZ	2003/03/28
MATERIAL NO.	
SIZE	
B	

SCALE 2:1	DESIGN UNITS INCH		THIRD ANGLE PROJECTION
TITLE	11.13/.438" BTS, 600V PC TAIL W/STD TURRET & MTG ENDS (63A3XX)		
	MOLEX INCORPORATED		
DOCUMENT NO.	SD-38630-005		SHEET NO. 1 OF 1

THIS DRAWING CONTAINS INFORMATION THAT IS PROPRIETARY TO MOLEX INCORPORATED AND SHOULD NOT BE USED WITHOUT WRITTEN PERMISSION

Mouser Electronics

Authorized Distributor

Click to View Pricing, Inventory, Delivery & Lifecycle Information:

Molex:

38630-4604