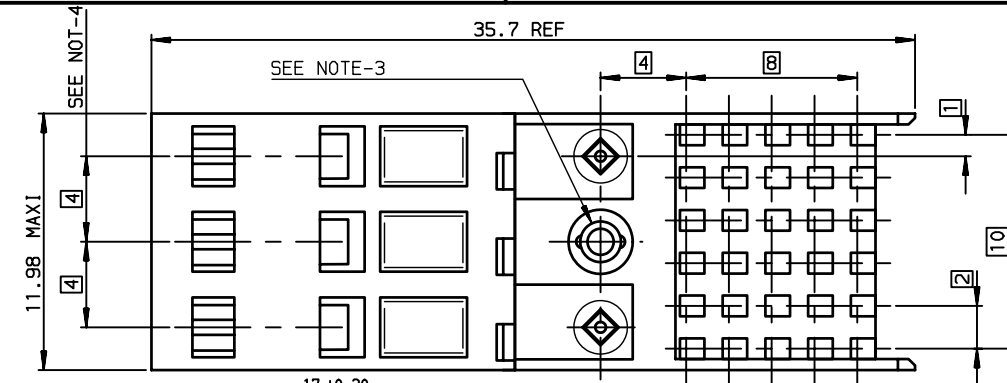
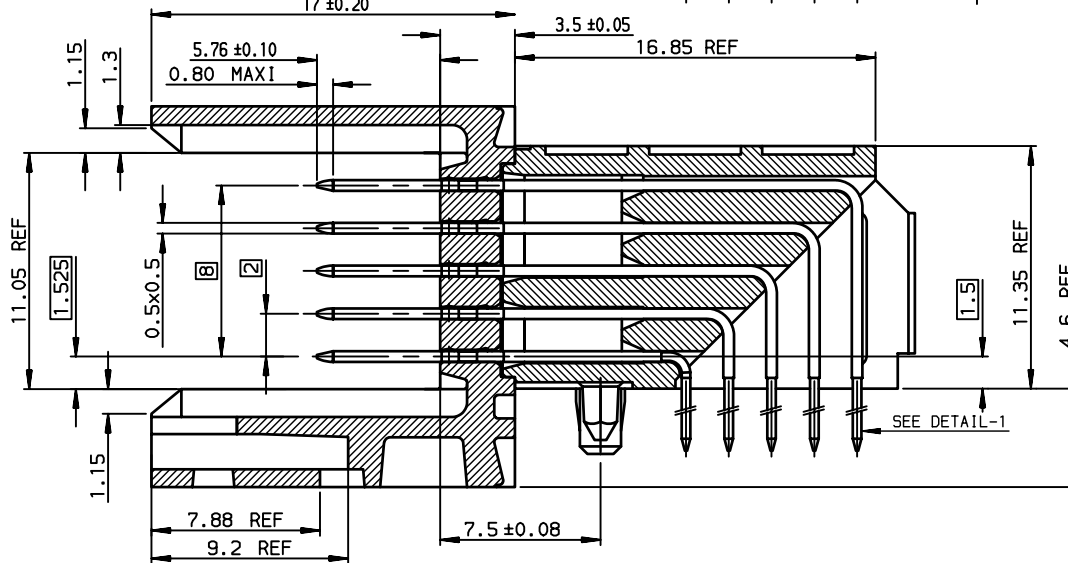


A



B



C

GENERAL CHARACTERISTICS AND ROHS INFORMATIONS:

SEE PRODUCT SPECIFICATION GS-12-446

NOTE-2: DIMENSIONS ACCORDING TO IEC-48B-595NP DRAFT (FEBRUARY 97)

NOTE-3: RETENTION DEVICES BEFORE SOLDERING BY FORCE FIT PEG.

NOTE-4: 3 X CAVITY FOR PLASTIC LATCH

NOTE-5: LATCH DIMENSIONS ACCORDING TO IEC-48B-595NP DRAFT

NOTE-6: INFORMATIONS ON LATCH, SEE DRW C-8626-0314/0315/0316

NOTE-7: IF SUFFIX "P" IS ADDED IN P/N PACKAGING IS IN TRAYS BUT CONNECTOR MARKING IS WITHOUT "P"

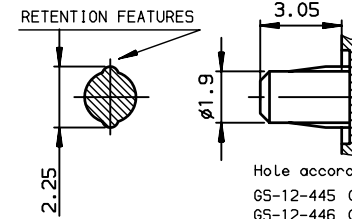
EXAMPLE: HM1XXXXXXXXXH6P, MARKED HM1XXXXXXXXXH6

D

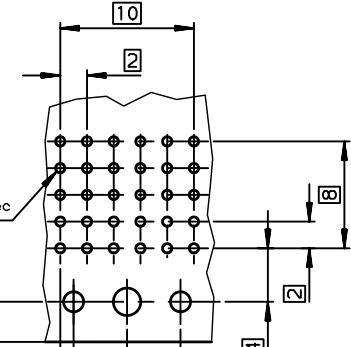
PART NUMBER

Part Number: HM1B51LAP000H6 (LF)

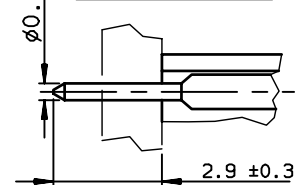
DETAIL OF FORCE-FIT PEGS



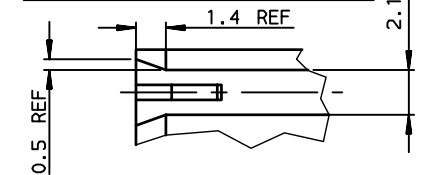
PCB LAYOUT SCALE 2.5/1



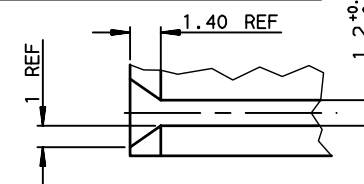
DETAIL-1: SOLDER PIN






DETAIL OF GUIDANCE SLOT - ROW-A SIDE



DETAIL OF GUIDANCE SLOT - ROW-E SIDE



European Views

www.fciconnect.com			surface ISO 1302		tolerance std ISO 406 ISO 1101		projection 		mm 			
			TOLERANCES UNLESS OTHERWISE SPECIFIED									
Dr	CHAMPION	1996/10/07	ANGULAR	LINEAR	0.X		±0.1		size A3	Scale 4		
Eng	LENOIR	1996/10/07			0.XX		±0.1					
Chr	LEGARE	1996/10/07			0.XXX		±0.1					
Appr	LEGARE	1996/10/07	0.XX' ±2°		0.XXX		±0.1		ECN LS08-0233			
			Product family				METRAL		Spec ref -			
			title HM1 MALE RA STB 30 WAY BOARD TO CABLE VERSION/UNSHIELDED				dwg no C-8626-0312				Rev. H	
			catalog no -				CUSTOMER				sheet 1 of 1	



HM1 MALE RA STB 30 WAY

BOARD TO CABLE VERSION/UNSHIELDED

catalog no

dwg no

C-8626-0312

CUSTOMER sheet 1 of 1

A

B

C

D

Mouser Electronics

Authorized Distributor

Click to View Pricing, Inventory, Delivery & Lifecycle Information:

[FCI / Amphenol:](#)

[HM1B51LAP000H6PLF](#)