

RAFIX 16 - Lamp socket W 2 x 4.6 d quick-connect terminals

1.71.212.011/0000



Dimensions

Size not mounted	23.9 x \varnothing 15.9 mm
Mounting depth	30.5 mm

Mechanical design

Mounting	snap into signal indicator
Lamp socket	wedge-base W 2 x 4.6d
Terminals	quick connector 2.8 x 0.8 mm
Terminal marking	X1 = anode, X2 = cathode

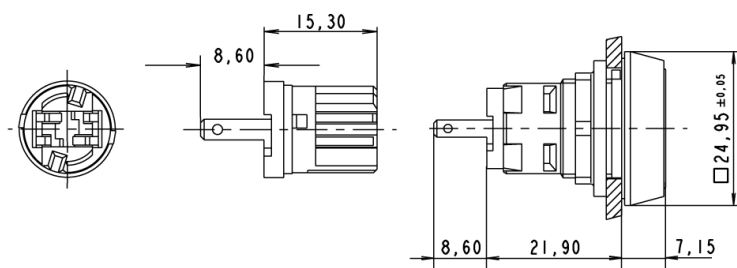
Electrical characteristics

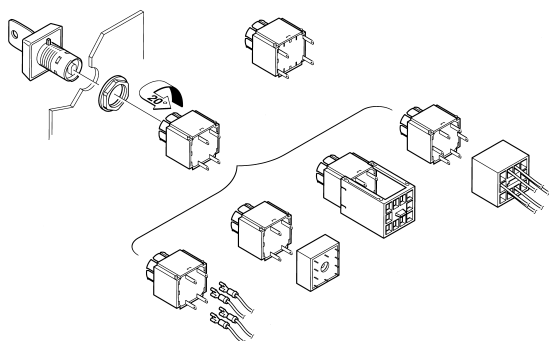
Rated voltage	60 V
Rated power	1.2 W

Other specifications

Shock resistance acc. to IEC 60068-2-27	amplitude < 50g, 11ms, half sinusoidal
Ambient temp. operating min.	-25 °C
Ambient temp. operating max. with lamp /LED	+55 °C
Storage temperature min.	-40 °C
Storage temperature max.	+85 °C
Environmental resistance	acc. to IEC 60068-2-14, -30, -33 and -78
Hot wire ignition acc. to IEC 60695-2-1	yes
Resistance to vibrations acc. to IEC 60068-2-6	10 g at 20 ... 500 Hz
ROHS compliant	yes
REACH compliant	yes

Meldeleuchte mit Lampenfassung





Mouser Electronics

Authorized Distributor

Click to View Pricing, Inventory, Delivery & Lifecycle Information:

RAFI:

[1.71.212.011/0000](#)