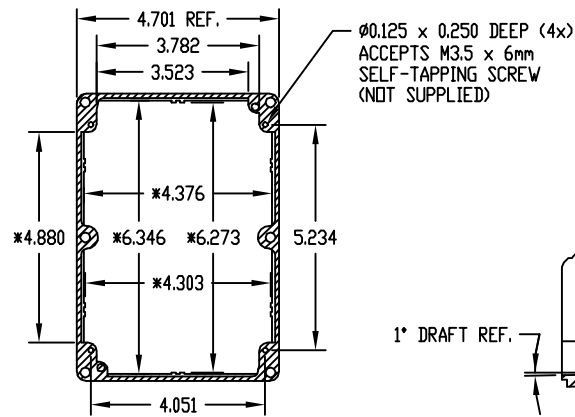
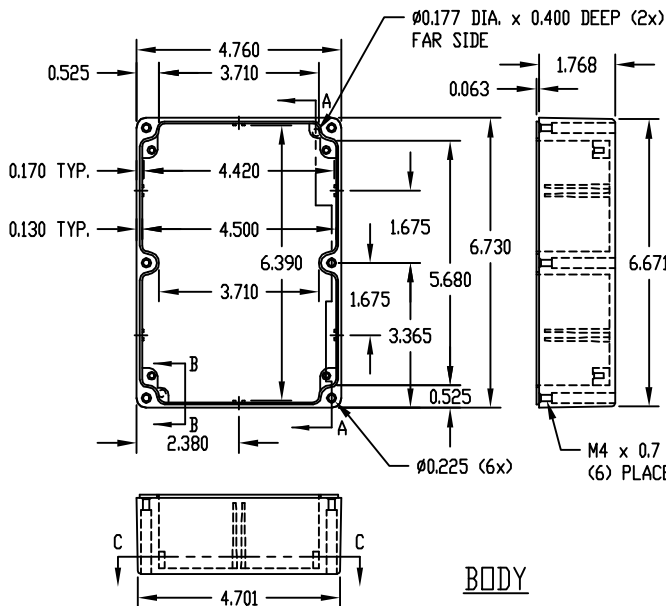
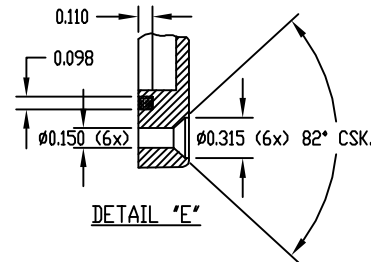
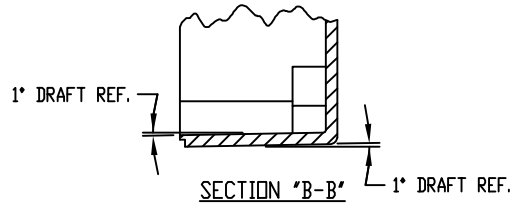


PART NAME	NEMA 4X DIE CAST ALUMINUM ENCLOSURE	PART No.	AN-1306, AN-1306-G, AN-2806 & AN-2806-B	REV. DATE	9-8-10
-----------	-------------------------------------	----------	---	-----------	--------

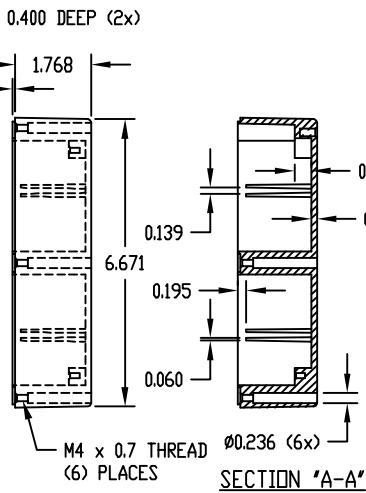


SECTION "C-C"

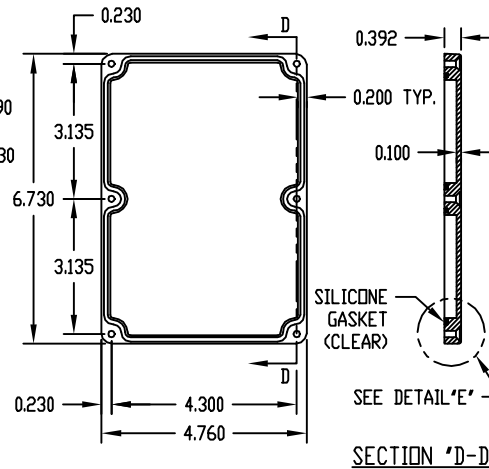
* DIMENSIONS ARE AT BOTTOM OF ENCLOSURE



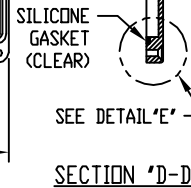
BODY



SECTION "A-A"



COVER

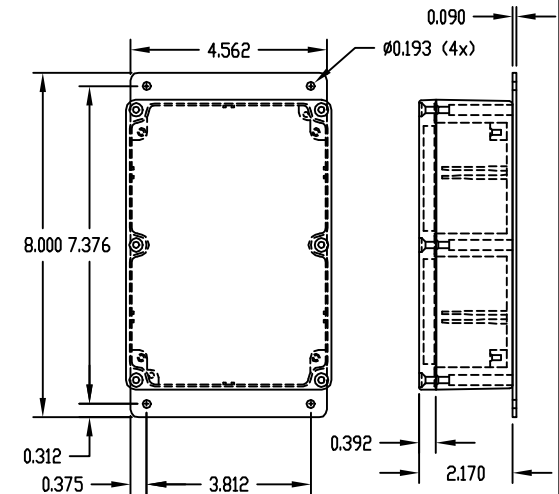


MATERIAL: ALUMINUM ALLOY #ADC-12

FINISH: NATURAL (NO SUFFIX)
GRAY (SUFFIX -G)
SMOOTH BLACK (SUFFIX -B)

NOTES:

- SIX (6) M4 x 20mm (0.787") LG. SCREWS SUPPLIED FOR ASSEMBLY OF COVER TO BODY.
- ALL HOLE DIAMETERS HAVE ± 0.005 TOLERANCE. ALL OTHER DIMENSIONS HAVE ± 0.015 TOLERANCE.



PART NO. AN-2806 & AN-2806-B ARE SUPPLIED WITH A WELDED ON MOUNTING BRACKET ONLY.

Mouser Electronics

Authorized Distributor

Click to View Pricing, Inventory, Delivery & Lifecycle Information:

Bud Industries:

[AN-1306-G](#) [AN-1306](#) [AN-2806](#) [AN-2806-B](#) [1306G-C](#)