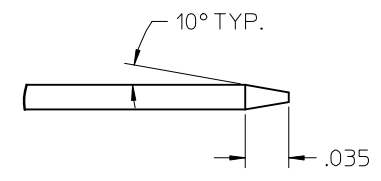
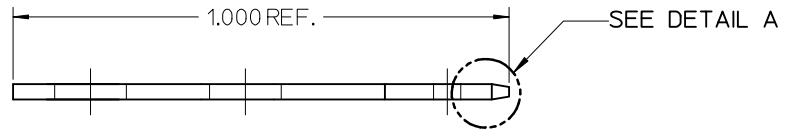
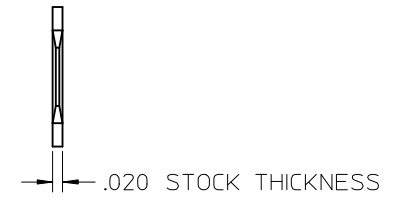
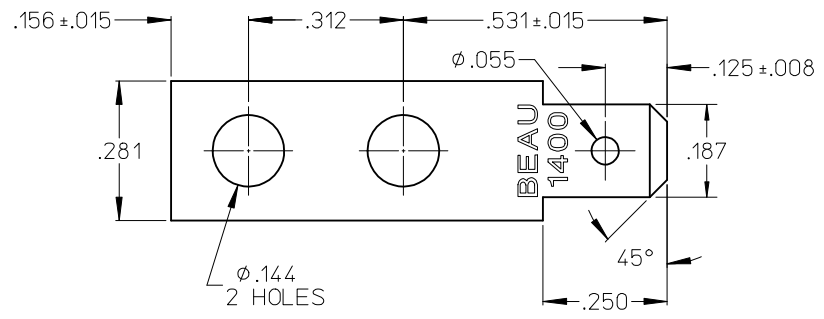


10	9	8	7	6	5	4	3	2	38002
MATERIAL NO.	ENGINEERING NO.	DESCRIPTION	MATERIAL	FINISH					
380020176	1413	TERMINAL, FAST-TAB, FLAT	BRASS	TIN OVER COPPER PLATED					



DETAIL A
SCALE 10:1

NOTES:
1. PART IS ROHS COMPLIANT.

INITIAL RELEASE EC NO: WNA2009-0537 DRWN: JENCINAS 2009/04/22 CHKD: CYORK 2009/05/11 APPR: JMACNEIL 2009/05/12 A		DESCRIPTION REV	QUALITY SYMBOLS ▽=0 ◻=0	GENERAL TOLERANCES (UNLESS SPECIFIED) <table><tr><td></td><td>mm</td><td>INCH</td></tr><tr><td>4 PLACES</td><td>± .---</td><td>± .---</td></tr><tr><td>3 PLACES</td><td>± .---</td><td>± .005</td></tr><tr><td>2 PLACES</td><td>± .---</td><td>± .01</td></tr><tr><td>1 PLACE</td><td>± .---</td><td>± .---</td></tr><tr><td colspan="3">ANGULAR ± 2 °</td></tr><tr><td colspan="3">DRAFT WHERE APPLICABLE MUST REMAIN WITHIN DIMENSIONS</td></tr></table>			mm	INCH	4 PLACES	± .---	± .---	3 PLACES	± .---	± .005	2 PLACES	± .---	± .01	1 PLACE	± .---	± .---	ANGULAR ± 2 °			DRAFT WHERE APPLICABLE MUST REMAIN WITHIN DIMENSIONS			DIMENSION STYLE INCH ONLY DRAWN BY DATE H. C. H. 1972/10/24 CHECKED BY DATE R. NEFF 1972/10/24 APPROVED BY DATE R. NEFF 1972/10/24 MATERIAL NO. SIZE B		SCALE 4:1 TITLE TERMINAL, .187 FT, FL (CAT# 1413) molex MOLEX INCORPORATED DOCUMENT NO. SD-38002-067 THIS DRAWING CONTAINS INFORMATION THAT IS PROPRIETARY TO MOLEX INCORPORATED AND SHOULD NOT BE USED WITHOUT WRITTEN PERMISSION	DESIGN UNITS INCH	THIRD ANGLE PROJECTION 1 OF 1
	mm	INCH																													
4 PLACES	± .---	± .---																													
3 PLACES	± .---	± .005																													
2 PLACES	± .---	± .01																													
1 PLACE	± .---	± .---																													
ANGULAR ± 2 °																															
DRAFT WHERE APPLICABLE MUST REMAIN WITHIN DIMENSIONS																															

Mouser Electronics

Authorized Distributor

Click to View Pricing, Inventory, Delivery & Lifecycle Information:

Molex:

38002-0176