

4

3

2

1

THIS DRAWING IS UNPUBLISHED.

RELEASED FOR PUBLICATION

© COPYRIGHT

ALL RIGHTS RESERVED.

LOC

DIST


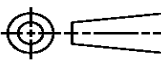
REVISIONS

P	LTR	DESCRIPTION	DATE	DWN	APVD
	A1	ECR-16-009822	14JUL2016	GK	SD

REPLACED BY OCEAN STYLE APPLICATOR PART
NUMBER 2836250-1

FOR REPLACEMENT PARTS FOR APPLICATOR 1855359
REFER TO ADDITIONAL PAGE(S). SPARE PARTS KIT (IF LISTED)
WILL REMAIN AVAILABLE.

THE REPLACEMENT OCEAN STYLE APPLICATOR HAS THE
SAME TERMINATOR/PRESS INTERFACE AS APPLICATOR
1855359

THIS DRAWING IS A CONTROLLED DOCUMENT.		DWN	GOPALAKRISHNA HV		 TE Connectivity			
		CHK	GOPALAKRISHNA HV					
DIMENSIONS:		TOLERANCES UNLESS OTHERWISE SPECIFIED:		APVD	NAME			
		0 PLC ± 1 PLC ± 2 PLC ± 3 PLC ± 4 PLC ± ANGLES ±		STOUGH DALE		FINE ADJUST SIDE FEED HDM APPLICATOR		
				PRODUCT SPEC				
				APPLICATION SPEC				
MATERIAL		FINISH		WEIGHT	SIZE	CAGE CODE	DRAWING NO	RESTRICTED TO
					A3		©- 1855359	
				CUSTOMER DRAWING		SCALE	SHEET 1 OF 2	REV A1

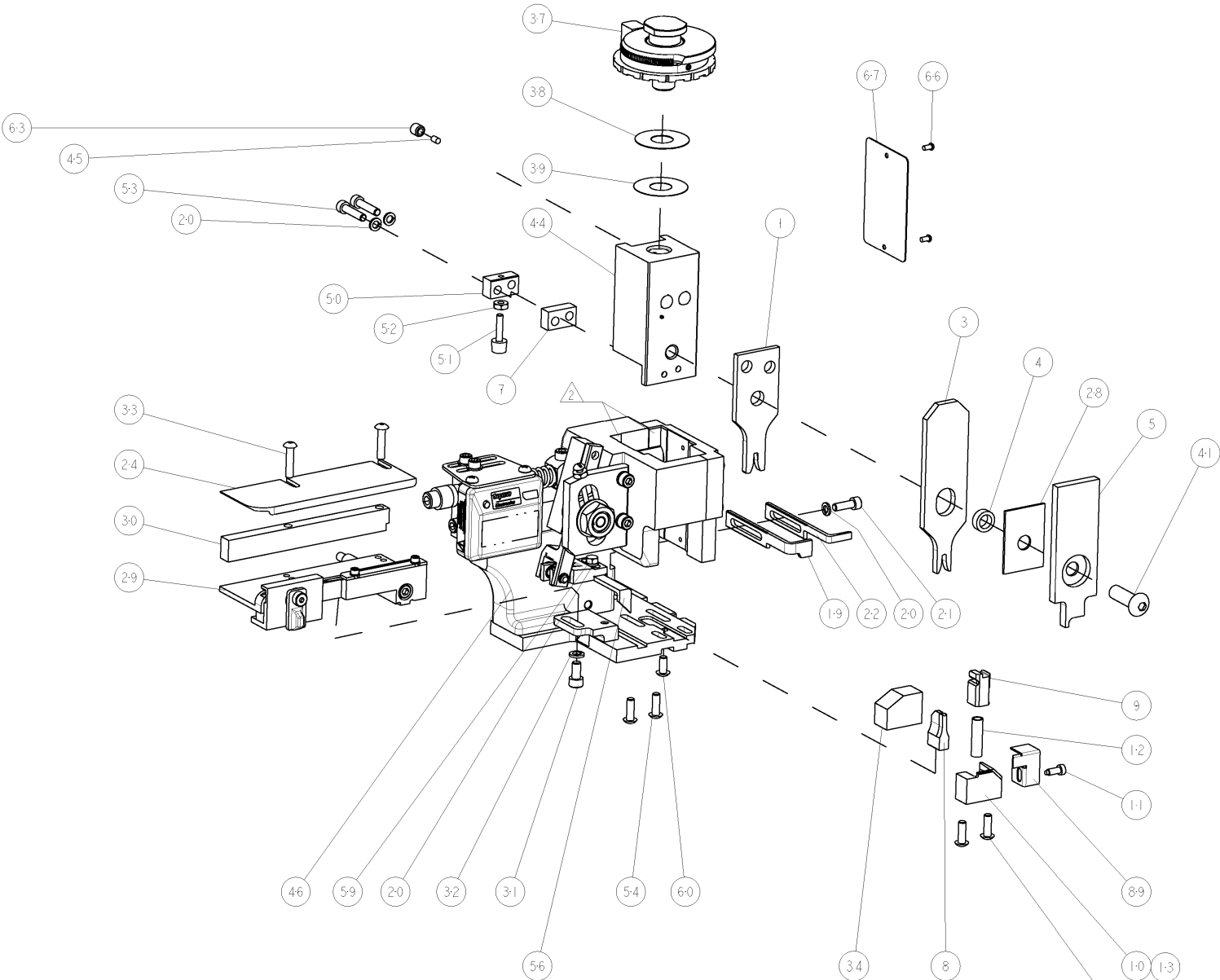
8		7		6		5		4		3		2		1	
THIS DRAWING IS UNPUBLISHED.		RELEASED FOR PUBLICATION		20											
COPYRIGHT 20		BY TYCO ELECTRONICS CORPORATION. ALL RIGHTS RESERVED.													
PART NUMBER	REV	FIRST USED	POWER UNIT	FEED TYPE	DESCRIPTION										
1855359-1	A	122500-1	LEADMAKER	POST FEED	CUTS CARRIER										
1855359-2	A	565435-5	BENCH MODEL K	PRE FEED	CUTS CARRIER										
1855359-3	A	354500-1	BENCH MODEL G	PRE FEED	CUTS CARRIER										
1855359-6	A	122500-1	LEADMAKER	POST FEED	CONTINUOUS CARRIER										
7-1855359-7	A	-	-	-	SPARE PARTS										

- △ RECOMMENDED SPARE PARTS
△ GREASE LIGHTLY
△ GUARD MUST BE IN PLACE WHEN OPERATING APPLICATOR IN A BENCH MACHINE

*** WARNING**
ON INSTALLATION, SET WIRE DISC TO LARGEST WIRE SIZE SETTING. USE OF SETTINGS BELOW MIN. REQUIRED CRIMP HEIGHT SETTING WILL CAUSE DAMAGE TO CRIMP TOOLING.

TERMINAL NAME: TERMINAL											
TE PN	MANF PN	FORD TERMINAL - FORD CRIMP SPECS									
1572875	F2UB-14487-AA										
-	-	CRIMP HEIGHT		WIRE SIZE		REF SETTING					
-	-	1.50±0.05mm[.059±.002]		14AWG		B3					
-	-	1.35±0.05mm[.053±.002]		16AWG		C5					
-	-										
-	-										
-	-	CRIMP		SIZE		TYPE		RANGE			
-	-	WIRE		2.40mm[.094]		F		14-16 AWG			
-	-	INSUL		2.80mm[.110]		OV		Ø1.9-2.6mm			
WIRE STRIP LENGTH 4.5-5.0mm		TERM APPL SPEC NONE		FEED 9.73mm		APPLICATOR INSTRUCTIONS 408-8040		SET UP GAGE 458637-1			

LOC		DIST		REV		REVISIONS					
A		66				DESCRIPTION		DATE		BYN	
						1		DEVELOPMENT		18DEC2007	
						A		RELEASED		27DEC2007	
										MEH	
										GB	



△	-	-	-	REF	-	..	455749-1	GUARD WINDOW	116
△	-	-	REF	-	-	..	679532-1	INSERT, GUARD	115
-	1	1	1	1	-	-	1-21002-7	SCR, BTN SKT HD CAP 6-32 X .375	91
-	1	1	1	1	-	-	318563-1	GUARD, FRONT CHIP	89
-	1	1	1	1	-	-	4088040	SF APPL INST 408-8040	72
-	1	1	1	1	-	-	217238-1	GENERAL INSTRUCTION PKG	71
-	1	1	1	1	-	-	461264-5	PLATE, IDENTIFICATION	67
-	2	2	2	2	-	-	21017-2	SCREW, DRIVE	66
-	1	1	1	1	-	-	21009-2	SCR, SET, SELF LOCKING 1/4-20 X .250	63
-	1	1	1	1	-	-	22733-8	SCR, BHSC, SELF-LOCKING, 8-32 X .375	60
-	1	1	1	1	-	-	2-22603-0	SCR, HEX HD CAP 8-32 X .312	59
-	1	1	1	1	-	-	458537-2	PAWL, FEED	56
-	4	4	4	4	-	-	2-21002-2	SCR, BTN SKT HD CAP 8-32 X .500	54
-	2	2	2	2	-	-	2-21000-9	SCR, SKT HD CAP 8-32 X .750	53
-	1	1	1	1	-	-	21018-5	NUT, HEX, REG 6-32	52
-	1	1	1	1	-	-	811242-2	BUMPER, HOLD DOWN	51
-	1	1	1	1	-	-	690753-1	SPACER, TONKER	50
-	-	-	-	-	690602-6	CAM, PRE FEED, 1 5/8	49
-	-	-	-	-	690602-5	CAM, PRE FEED, 1 1/8	48
-	1	1	1	1	-	-	690501-4	CAM, POST FEED, 1 5/8	47
-	1	1	1	1	-	-	459456-1	APPL, BASIC SUB ASSY (SIDE WISE MQCA)	46
-	1	1	1	1	-	-	690191-1	PLUG, NYLON	45
-	1	1	1	1	-	-	455673-1	RAM, SIDE FEED	44
-	1	1	1	1	-	-	7-21002-9	SCR, BTN SKT HD CAP 5/16-24 X 1.00	41
-	1	1	1	1	-	-	690125-1	SHIM SUB-ASSY	39
-	1	1	1	1	-	-	1-469367-0	SHIM	38
-	1	1	1	1	-	-	879103-3	FINE ADJUST HEAD ASSEMBLY	37
-	1	1	1	1	-	-	2-690786-3	TERMINAL SUPPORT	34
-	2	2	2	2	-	-	2-21002-4	SCR, BTN SKT HD CAP 8-32 X .750	33
-	1	1	1	1	-	-	21024-5	WASHER, SPRG LOCK, REG NO 10	32
-	1	1	1	1	-	-	3-21000-4	SCR, SKT HD CAP 10-32 X .375	31
-	1	1	1	1	-	-	1320908-8	SPACER, STRIP GUIDE	30
-	1	1	1	1	-	-	1633091-2	ASSEMBLY, STRIP GUIDE	29
-	1	1	1	1	-	-	1-455888-0	SPACER, CRIMPER	28
-	1	1	1	1	-	-	1320928-5	PLATE, STRIP GUIDE	24
-	1	-	-	-	-	-	690472-2	STRIPPER	22
-	1	1	1	1	-	-	2-21000-7	SCR, SKT HD CAP 8-32 X .500	21
-	4	4	4	4	-	-	21024-4	WASHER, SPRG LOCK, REG NO 8	20
-	-	-	-	-	-	-	691353-1	STRIPPER	19
-	1	-	-	-	-	-	679625-1	SHEAR HOLDER, FRONT (NO CUT)	13
-	1	1	1	1	-	-	3-22280-3	SPRING, COMPRESSION	12
-	1	1	1	1	-	-	690461-1	STOP, SHEAR	11
-	-	-	-	-	-	-	690459-1	SHEAR HOLDER, FRONT	10
-	1	1	1	1	-	-	454276-2	FLOATING SHEAR, FRONT	9
△	1	1	1	1	1	-	3-1633116-9	ANVIL, COMBINATION	8
-	1	1	1	1	-	-	1-240641-5	SPACER	7
-	-	-	-	-	-	-	6
-	1	1	1	1	-	-	1-455889-4	DEPRESSOR, SHEAR	5
-	1	1	1	1	-	-	4-238011-1	BLOCK, CRIMPER SPACER	4
△	1	1	1	1	1	-	8-854830-0	CRIMPER, INSULATION SPECIAL	3
-	-	-	-	-	-	-	2
△	1	1	1	1	1	-	4-1490019-1	CRIMPER, WIRE PREMIUM	1
-	77	-6	-3	-2	-1	U/M	PART NO	DESCRIPTION	ITEM NO

1. THIS DRAWING IS A PROPERTY OF TYCO ELECTRONICS CORPORATION. IT IS TO BE USED ONLY FOR THE PROJECT AND QUANTITY SPECIFIED HEREON. IT IS NOT TO BE REPRODUCED OR COPIED IN ANY MANNER WITHOUT THE WRITTEN PERMISSION OF TYCO ELECTRONICS CORPORATION.		OWN T. BAO 18DEC2007		Tyco Electronics Tyco Electronics Harrisburg, PA 17105-3608	
DIMENSIONS: INCHES		TOLERANCES UNLESS OTHERWISE SPECIFIED:		NAME	

Mouser Electronics

Authorized Distributor

Click to View Pricing, Inventory, Delivery & Lifecycle Information:

[TE Connectivity:](#)

[1855359-6](#)