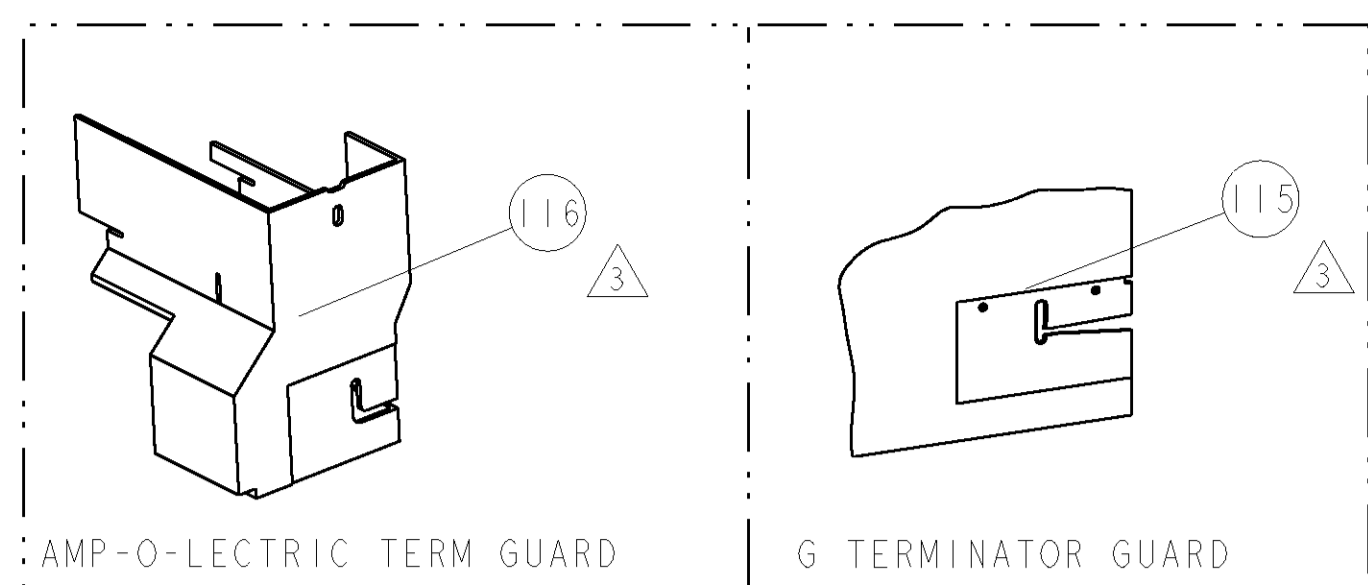


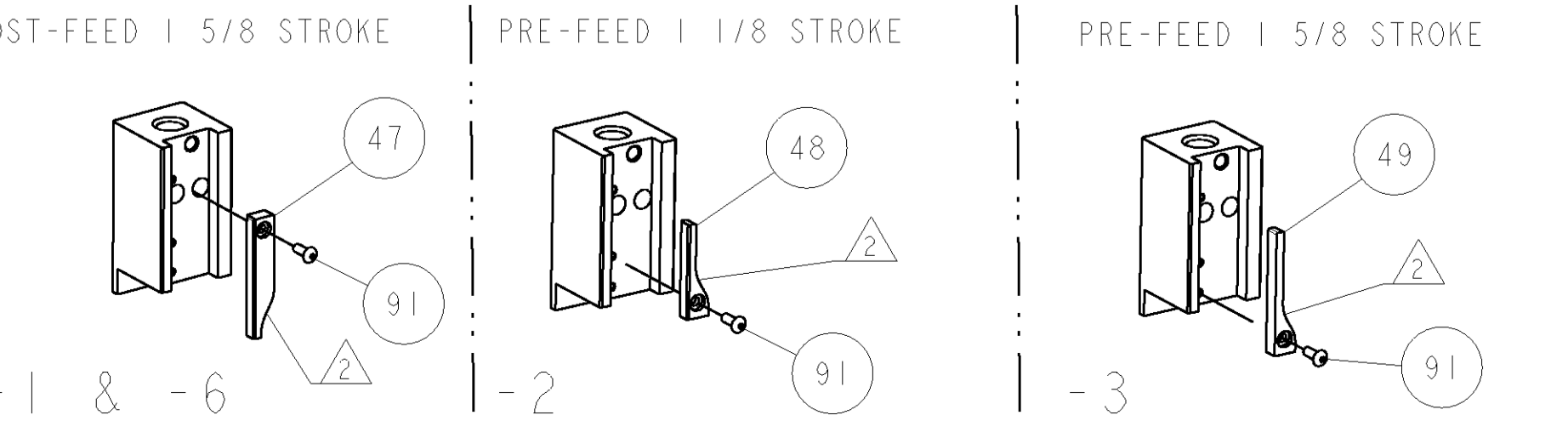
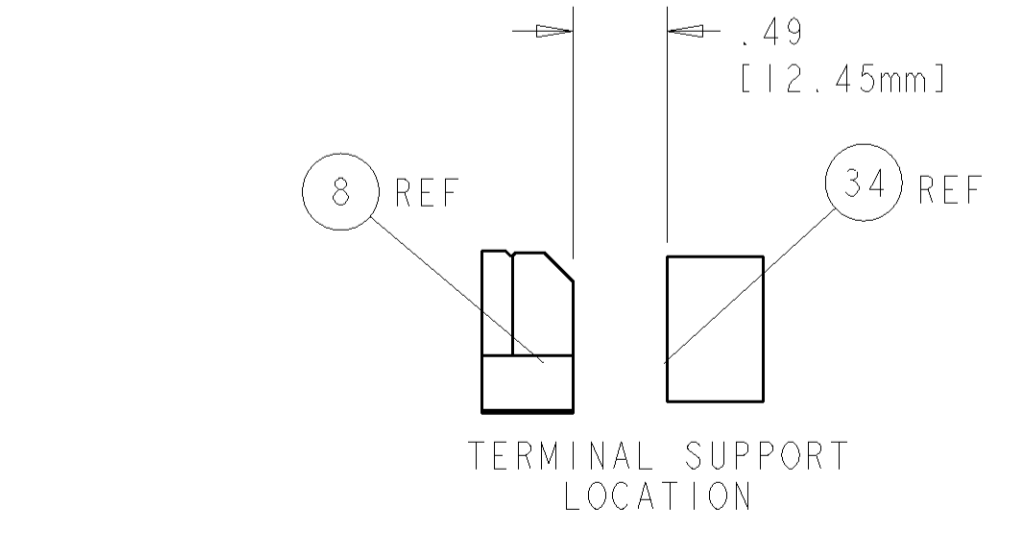
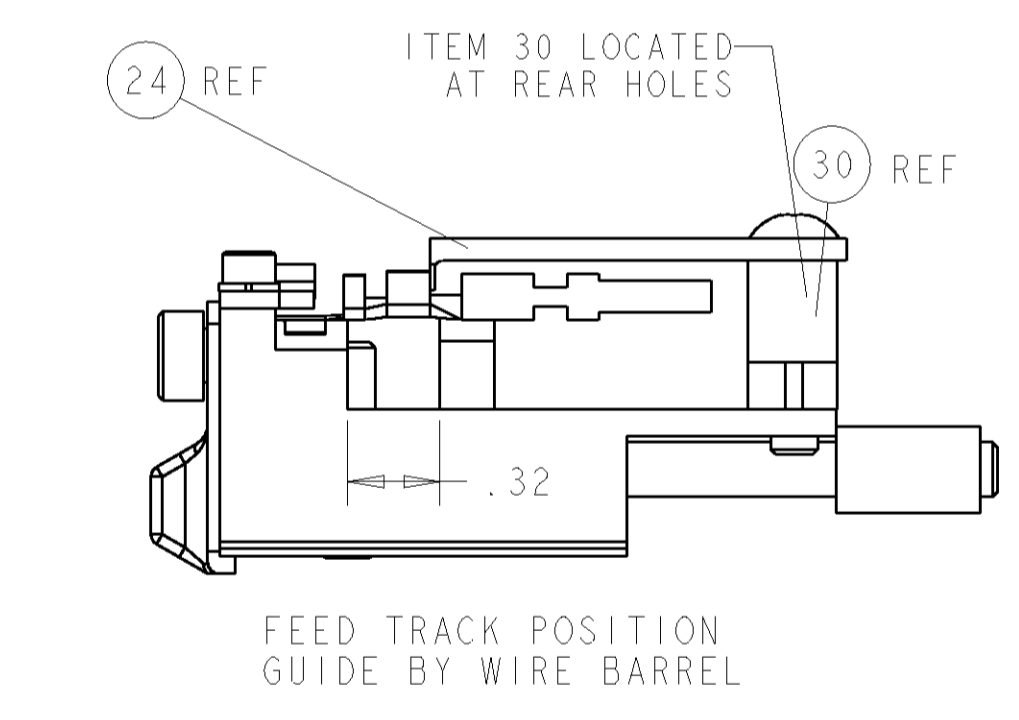
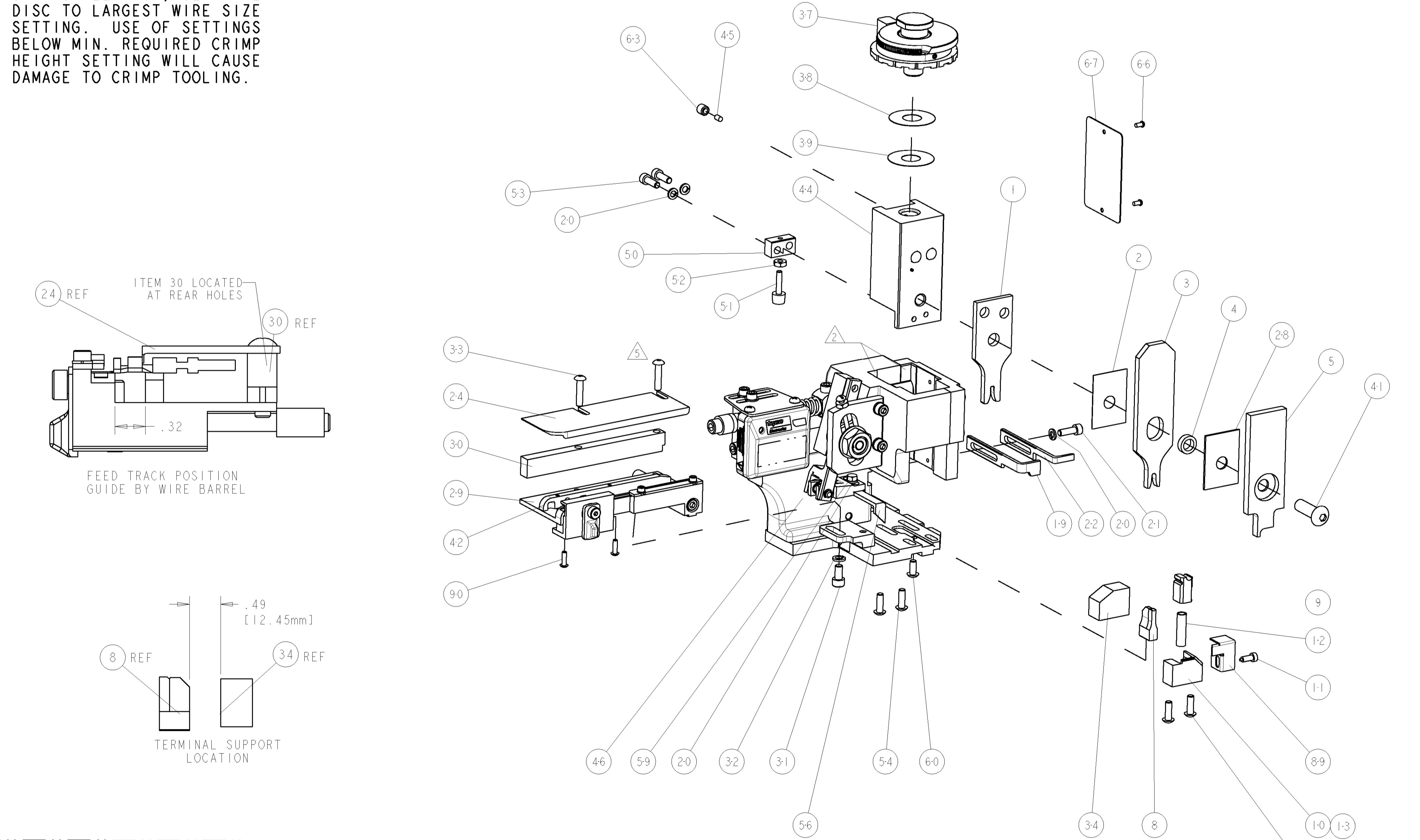
PART NUMBER	REV	FIRST USED	POWER UNIT	FEED TYPE	DESCRIPTION
1855363-1	A	122500-1	LEADMAKER	POST FEED	CUTS CARRIER
1855363-2	A	565435-5	BENCH MODEL K	PRE FEED	CUTS CARRIER
1855363-3	A	354500-1	BENCH MODEL G	PRE FEED	CUTS CARRIER
1855363-6	A	122500-1	LEADMAKER	POST FEED	CONTINUOUS CARRIER
7-1855363-7	A	-	-	-	SPARE PARTS



TE PN		MANF PN		YAZAKI TERMINAL - YAZAKI CRIMP SPECS		REF SETTING
1949595	451411-13-027	7113-2346		CRIMP HEIGHT	WIRE SIZE	B8
-	-	-	-	1.75mm+ .05/- .05 [.069+ .002/- .002]	2.5mm2	C7
-	-	-	-	1.65mm+ .05/- .05 [.065+ .002/- .002]	14AWG	DO
-	-	-	-	1.60mm+ .05/- .05 [.063+ .002/- .002]	1.5mm2	-
CRIMP		SIZE	TYPE	RANGE		
WIRE		2.36mm [.093]	F	4		
INSUL		3.25mm [.128]	O	Ø 2.286 MAX		
WIRE STRIP LENGTH	TERM APPL SPEC	FEED	APPLICATOR INSTRUCTIONS	SET UP GAGE		
4.763-5.144	NONE	13.208	408-8040	458637-1		

- △ RECOMMENDED SPARE PARTS
- △ GREASE LIGHTLY
- △ GUARD MUST BE IN PLACE WHEN OPERATING APPLICATOR IN A BENCH MACHINE
- △ YAZAKI RECOMMENDED WIRES SIZES FOR THIS TERMINAL ARE 1.5mm AND 2.5mm. 14AWG WIRE DOES NOT APPEAR ON YAZAKI SPEC TYCO ELECTRONICS CALCULATED CRIMP HEIGHT
- △ CUT TO LENGTH AT ASSEMBLY

*** WARNING**
ON INSTALLATION, SET WIRE DISC TO LARGEST WIRE SIZE SETTING. USE OF SETTINGS BELOW MIN. REQUIRED CRIMP HEIGHT SETTING WILL CAUSE DAMAGE TO CRIMP TOOLING.



LOC	DIST	REV	DESCRIPTION	DATE	DWN	APVD
A	66	A1	NO PRINT IN STARTEC	15APRIL2008	CMR	GB

QTY	REF	DESCRIPTION	ITEM NO
-	-	455749-1	GUARD WINDOW
-	-	679532-1	INSERT, GUARD
-	1	1-21002-7	SCR, BTN SKT HD CAP 6-32 X .375
-	2	1-21002-4	SCR, BTN SKT HD CAP 4-40 X .375
-	1	318563-1	GUARD, FRONT CHIP
-	1	4088040	SF APPL INST 408-8040
-	1	217238-1	GENERAL INSTRUCTION PKG
-	1	461264-5	PLATE, IDENTIFICATION
-	2	21017-2	SCREW, DRIVE
-	1	21009-2	SCR, SET, SELF LOCKING 1/4-20 X .250
-	1	22733-8	SCR, BHSC, SELF-LOCKING, 8-32 X .375
-	1	2-22603-0	SCR, HEX HD CAP 8-32 X .312
-	1	458537-2	PAWL, FEED
-	4	2-21002-2	SCR, BTN SKT HD CAP 8-32 X .500
-	2	2-21000-7	SCR, SKT HD CAP 8-32 X .500
-	1	21018-5	NUT, HEX, REG 6-32
-	1	811242-2	BUMPER, HOLD DOWN
-	1	690753-1	SPACER, TONKER
-	-	690602-6	CAM, PRE FEED, 1 5/8
-	-	690602-5	CAM, PRE FEED, 1 1/8
-	1	690501-4	CAM, POST FEED, 1 5/8
-	1	459456-1	APPL. BASIC SUB ASSY (SIDE WISE MQCA)
-	1	690191-1	PLUG, NYLON
-	1	455673-1	RAM, SIDE FEED
-	1	189807-3	FENCE
-	1	7-21002-9	SCR, BTN SKT HD CAP 5/16-24 X 1.00
-	1	690125-1	SHIM SUB-ASSY
-	1	469367-1	SHIM
-	1	879103-3	FINE ADJUST HEAD ASSEMBLY
-	1	3-690786-3	TERMINAL SUPPORT
-	2	2-21002-4	SCR, BTN SKT HD CAP 8-32 X .750
-	1	21024-5	WASHER, SPRG LOCK, REG NO 10
-	1	3-21000-4	SCR, SKT HD CAP 10-32 X .375
-	1	1320908-8	SPACER, STRIP GUIDE
-	1	1633091-7	ASSEMBLY, STRIP GUIDE
-	1	1-455888-0	SPACER, CRIMPER
-	1	1320928-5	PLATE, STRIP GUIDE
-	1	690472-2	STRIPPER
-	1	2-21000-7	SCR, SKT HD CAP 8-32 X .500
-	4	21024-4	WASHER, SPRG LOCK, REG NO 8
-	-	691353-1	STRIPPER
-	1	679625-1	SHEAR HOLDER, FRONT (NO CUT)
-	1	3-22280-3	SPRING, COMPRESSION
-	1	1-690461-7	STOP, SHEAR
-	-	690459-1	SHEAR HOLDER, FRONT
-	1	462006-1	FLOATING SHEAR, FRONT
-	1	5-1633535-6	ANVIL, COMBINATION
-	-	-	-
-	-	-	-
-	1	2-455889-0	DEPRESSOR, SHEAR
-	1	1-238011-9	BLOCK, CRIMPER SPACER
-	1	1633589-9	CRIMPER, INSUL O
-	1	455888-2	SPACER, CRIMPER
-	1	6-1673600-3	CRIMPER, WIRE

INCHES	TOLERANCES UNLESS OTHERWISE SPECIFIED:	DIMENSIONS:	FINISH	WEIGHT	CUSTOMER DRAWING
0 PLC ± .01	1 PLC ± .01	2 PLC ± .01	3 PLC ± .001	4 PLC ± .0001	ANGLES ± .0001
MATERIAL		FINISH		SCALE 3:5 SHEET 1 OF 1 REV A1	

CUSTOMER VIEWABLE ASSEMBLY

Mouser Electronics

Authorized Distributor

Click to View Pricing, Inventory, Delivery & Lifecycle Information:

[TE Connectivity:](#)

[1855363-6](#)